

### Features

The 3/8 male pipe fitting on the bottom of the shaft allows a suction cup to attach to the spring mount. The 3/8 female pipe thread located at the top of the shaft allows a venturi or vacuum source to be threaded onto the spring mount.

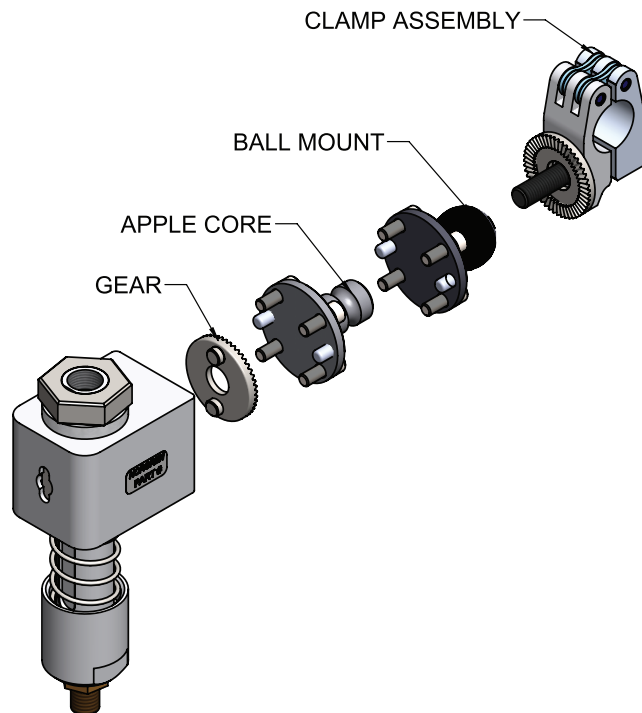
### Options selector

SM X X X XX or XXXX

Unit Measure	Substitute
English	E
Metric	M
Travel Length	Substitute
2 Inch Travel	2
4 Inch Trave.	4
Orientation	Substitute
Non-inverted	N
Inverted	I

Attachment Options	Substitute
Ø1" POZ-E-LOK (Smooth)	G10S
Ø25mm POZ-E-LOK (Smooth)	G25S
Ø25mm POZ-E-NOR (Toothed)	G25N
Ø1.5" POZ-E-LOK (Smooth)	G15S
Ø40mm POZ-E-LOK (Smooth)	G40S
Ø40mm POZ-E-NOR (Toothed)	G40N

Attachment Options	Substitute
Apple Core	AN
Ball Mount	BN
Gear	GN
None	NN



SEE ENGINEERING ADVANTAGE  
Scan with a QR code reader – [www.norgren.com/automationsolutions/](http://www.norgren.com/automationsolutions/)

All Dimensions in Inches (mm)

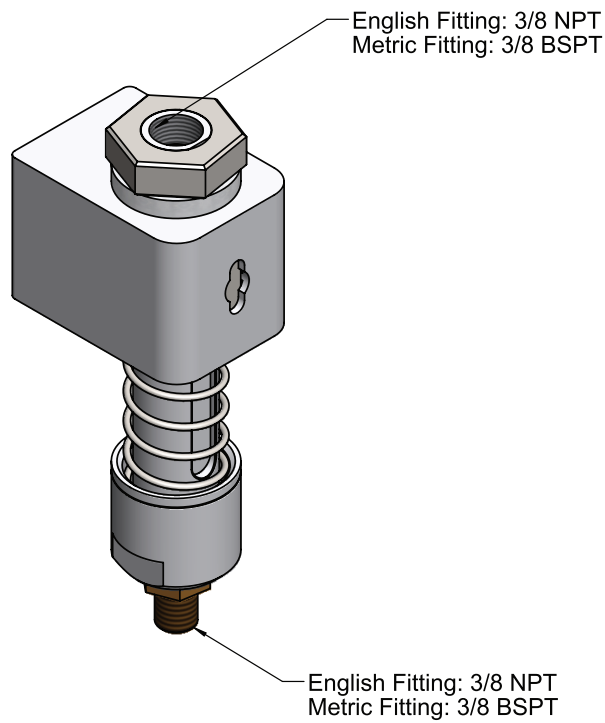
**Note**

Unit Measure option affects the shaft's ID thread on Top and the OD thread at the bottom.

**Options selector**

Unit Measure	
English	E
Metric	M

SM X X X XX or XXXX



### Features

Spring mount is offered for both 2" and 4" compression travel.

Travel allows for the compliance as the sheet metal stack height decreases.

Spring mount is offered with both Non-Inverted and Inverted arrangements in order to allow suction cups to be on the same plane.

### Options selector

SM X X X XX or XXXX

Travel Length	Substitute
2 Inch Travel	2
4 Inch Travel	4
Orientation	Substitute
Non-Inverted	N
Inverted	I

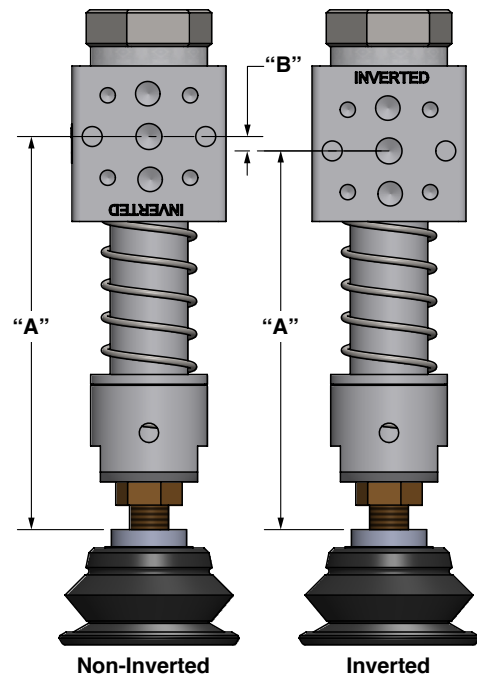
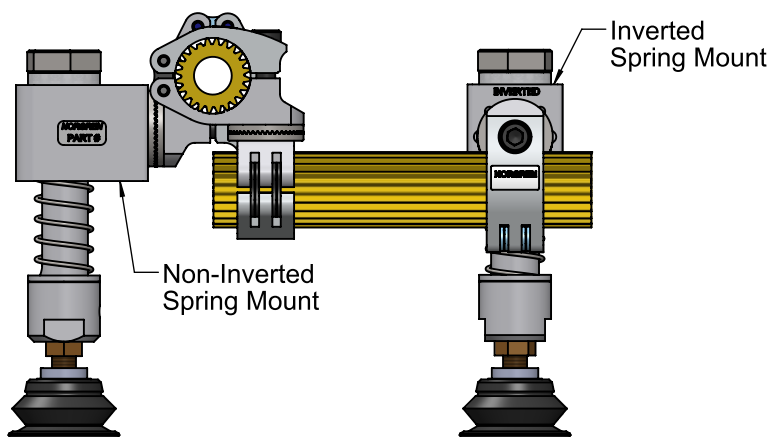
### Dimensions

Stroke Options	"A" (Typical)	"B"
2 Inch Travel (Non-Inverted)	5.05 (128.40)	.185 (4.7)
2 Inch Travel (Inverted)	4.87 (123.70)	.185 (4.7)
4 Inch Travel (Non-Inverted)	7.01 (178.07)	.185 (4.7)
4 Inch Travel (Inverted)	6.82 (173.37)	.185 (4.7)

### Weight:

1.57 lbs / 712 grams - 2.26 lbs / 1027 grams

Dimensions in. (mm)



**Features**

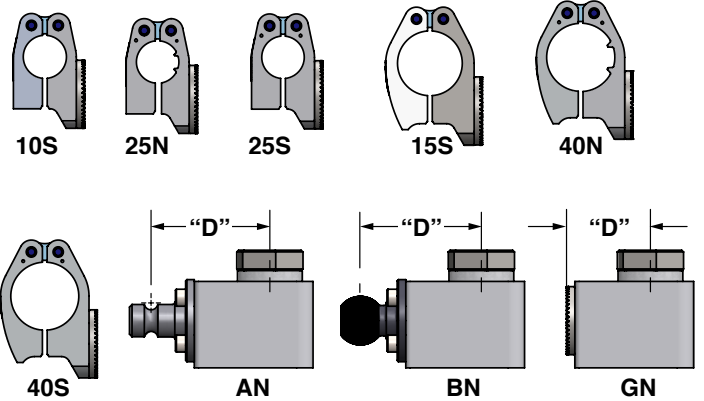
Available mounting options — Gear, Apple core, Ball mount and Clamp assembly.

Different mounting options allow the spring mount to be attached to different tooling systems.

**Options selector**

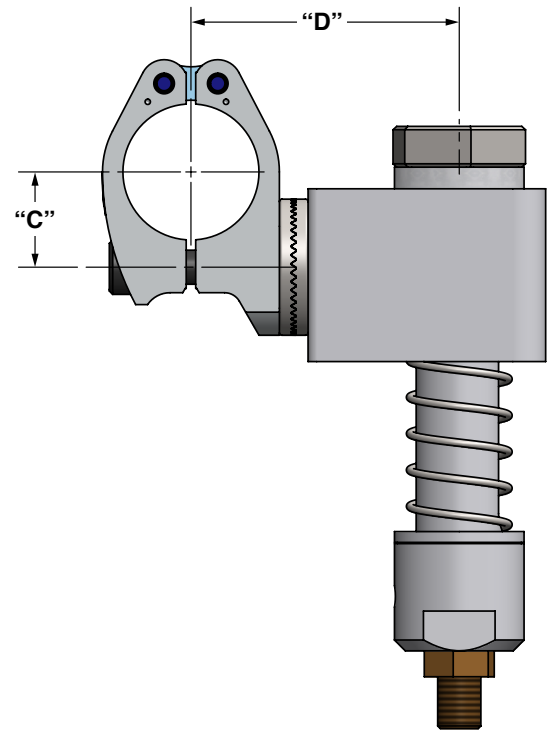
**SM X X X XX or XXXX**

Attachment Options	Substitute
Ø1" POZ-E-LOK (Smooth)	G10S
Ø25mm POZ-E-LOK (Smooth)	G25S
Ø25mm POZ-E-NOR (Toothed)	G25N
Ø1.5" POZ-E-LOK (Smooth)	G15S
Ø40mm POZ-E-LOK (Smooth)	G40S
Ø40mm POZ-E-NOR (Toothed)	G40N
Attachment Options	Substitute
Apple Core	AN
Ball Mount	BN
Gear	GN
None	NN



**Dimensions**

Clamp Assembly	"C"	"D"
10S	0.8661 (22)	2.81 (71.38)
15S	1.1024 (28)	3.105 (78.88)
25S	0.8661 (22)	2.81 (71.38)
25N	0.8661 (22)	2.81 (71.38)
40S	1.1024 (28)	3.105 (78.88)
40N	1.1024 (28)	3.105 (78.88)
AN	0 (0)	2.75 (69.85)
BN	0 (0)	2.80 (71.12)
GN	0 (0)	1.94 (49.33)
NN	0 (0)	1.75 (44.45)



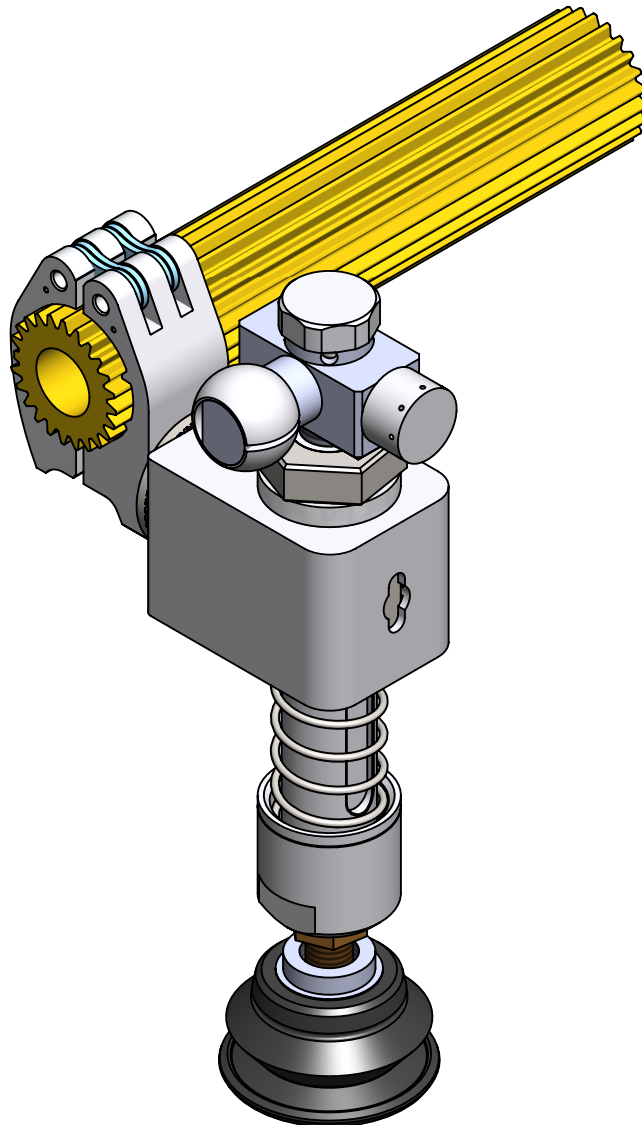
**Weight:**

1.57 lbs / 712 grams - 2.26 lbs / 1027 grams

Dimensions in. (mm)

### Example

Below is an example of a suction cup that is attached at the bottom and a Venturi/Vacuum source is attached at the top of the spring mount.



### Warning

Improper selection, misuse, age or malfunction of components used in systems can cause failure in various modes. The system designer is warned to consider the failure modes of all component parts and to provide adequate safeguards to prevent personal injury or damage to equipment or property in the event of such failure modes. System designers and end users are cautioned to consult instruction sheets and specifications available from the factory. The system designer/end user is responsible for verifying that all requirements for the application are met.

### Warranty

The products described herein are warranted subject to seller's Standard Terms and Condition of Sale, available at seller's website.