

Valve island VS18/VS26 with PROFINET Interface

Operation & Service
Manual

Engineering
GREAT Solutions



Change history:

The Change history reflects all changes of the Operation & Service Manual, which were done after the initial release.

Index	Chapter	Change description	Date	Name
001	All	Set up initial version	27/03/2017	
002	2	New chapter added	31/05/2017	
003	2.3, 9	ISEM description added, valve island extension added	03/11/2017	

This Operation & Service Manual makes no claims of being complete as it does not cover all variants of the VS18/VS26 valve islands series at the moment.

Therefore this document is subject to extensions or changes.

Content

1	About this documentation	5
2	Important hints.....	6
2.1	Grounding and equipotential bonding.....	6
2.2	Power-up and initialization phase of the VS18/VS26 valve island.....	6
2.3	Intermediate supply/exhaust module (ISEM)	6
3	Electrical connections of the VS18/VS26 valve island.....	7
3.1	PROFINET Bus connectors Port 1 & Port 2	8
3.2	POWER supply connector	8
4	Commissioning	9
4.1	GSDML file installation	9
4.2	Hardware configuration: Select valve island	10
4.3	Identifying devices in the network „Blink Test“	13
4.4	Assignment of device name	14
4.5	Parameterization	16
4.5.1	General Parameters	16
4.5.2	Valve Diagnostics.....	17
4.5.3	Substitute behavior	17
4.6	Compilation and download	18
5	Output data	19
5.1	Address assignment.....	19
5.2	Output behavior at power up and in fault condition	20
6	Diagnostics and LEDs	21
6.1	Status LEDs	21
6.1.1	Status LEDs description	21
6.1.2	Link states for Port P1 and Port P2	21
6.1.3	Bus Error Status LED (BF)	21
6.1.4	Error Status LED (SF)	21
6.1.5	Electronics Power Supply Status, LED (VB).....	21
6.1.6	Valve Power Supply Status, LED (VA)	21
6.2	Valve slice Status LEDs	22
6.3	Online diagnostics with Siemens TIA Portal	22
6.3.1	Wrong module.....	23
6.3.2	Module diagnostics (e.g. under/overvoltage)	24
6.3.3	Channel diagnostics (e.g. wire break of solenoid)	25
7	PROFINET error codes	26
8	Properties PROFINET interface.....	26
9	Valve island extension	27
9.1	Overview – possible combinations	27
9.2	Valve island with 4 stations	28
9.3	Valve island with 6 stations	28
9.4	Valve island with 8 stations	29
9.5	Valve island with 10 stations	29
9.6	Valve island with 12 stations	30
9.7	Valve island with 14 stations	30
9.8	Valve island with 16 stations	31
9.9	Valve island with 18 stations	31
9.10	Valve island with 20 stations.....	31
10	Electrical data	32
11	Technical data	33
11.1	Technical data VS18 and VS26	33
11.2	Technical data VS18.....	34
11.3	Technical data VS26.....	34

Contact information

Norgren GmbH

Site Fellbach
Stuttgarter Straße 120
70736 Fellbach
Tel: +49 711 5209-0

1 About this documentation

This Operation & Service Manual contains the information to set up and operate the VS18/VS26 valve island with PROFINET interface and to detect and resolve problems.

Note

In addition to the specific information for the PROFINET variants, all data sheets for the VS18/VS26 valve island series are applicable and remain valid. The difference between the both variants consists of the sizes of valves and the resulting maximum flow rate. All electrical connections and parameterization are the same for both variants.

Refer also to the data sheets on the following web links:

- http://cdn.norgren.com/pdf/en_5_1_250_VS18.pdf
- http://cdn.norgren.com/pdf/en_5_1_350_VS26.pdf

Further information about PROFINET is available on PI website.

- <http://www.profinet.com>
- <http://www.profibus.com/download/>

Basic information about PROFINET could be found in the following document:

- *“PROFINET Technology and Application – System”*

Installation Guidelines could be found in the following documents:

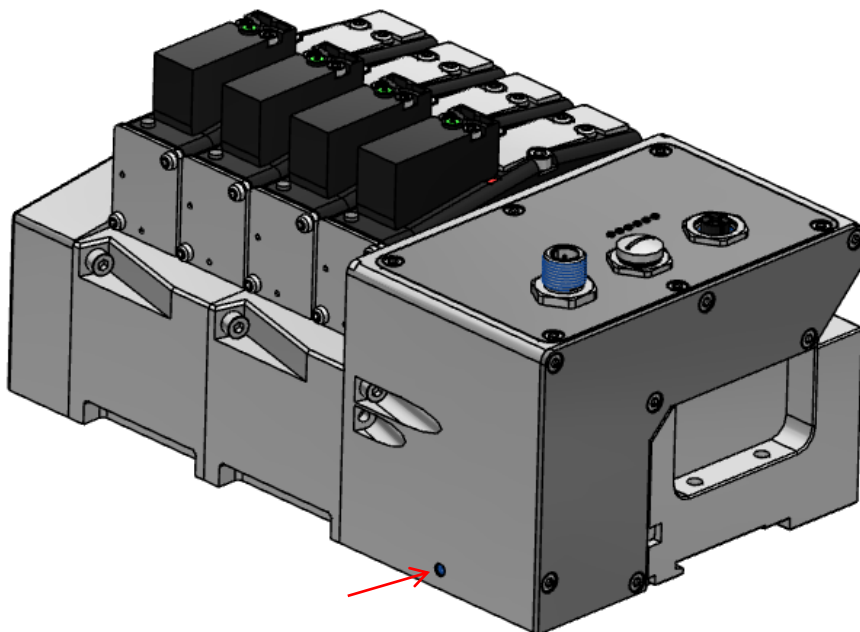
- *“PROFINET Guideline for Cabling and Assembly”*
- *“PROFINET Guideline for Commissioning”*

2 Important hints

2.1 Grounding and equipotential bonding

Proper grounding and equipotential bonding are very important to protect against electromagnetic interferences in PROFINET networks. In order to reduce potential impact, grounding of the PROFINET cable screen should be done at both ends of every cable (i.e. at each device). Equipotential bonding ensures that the ground potential is identical throughout the entire PROFINET network and is essential to avoid equipotential bonding currents, which could otherwise flow through the PROFINET cable screen. Please refer for further details to the "PROFINET Installation Guideline for Cabling and Assembly" provided by the PROFINET user organization (<http://www.profinet.com>).

Ground connection needs to be established using the M4 thread on the rear of the connection module. Its location shows the red arrow on the following picture.



2.2 Power-up and initialization phase of the VS18/VS26 valve island

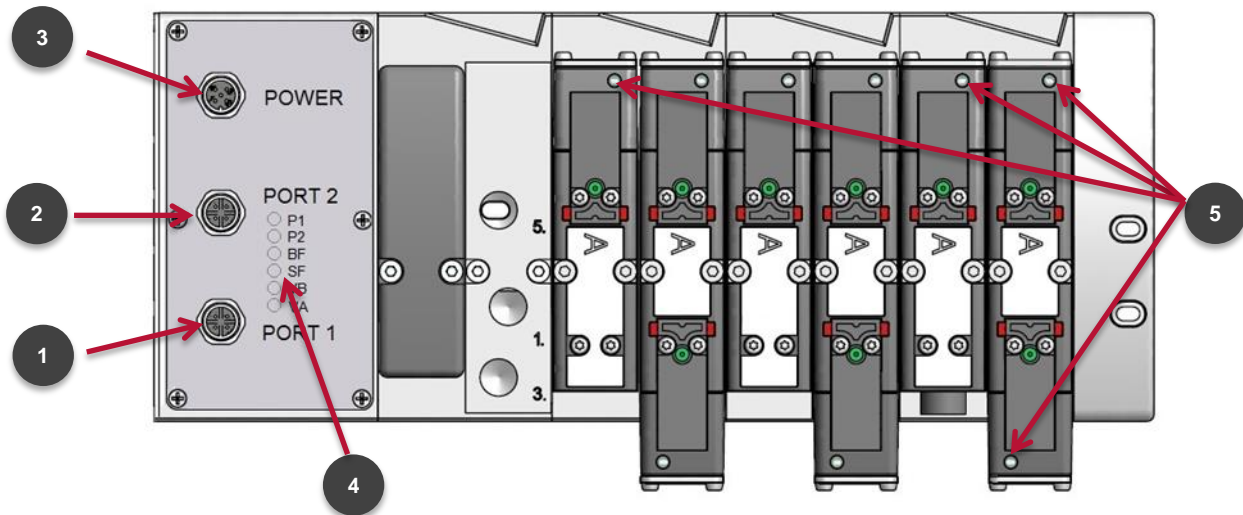
The valve island initializes automatically after power-up. During initialization the number of available valve stations is also evaluated, which requires that at this point also the power supply for the valves (VA) is already available during initialization start. Otherwise not all valve stations might be detected and initialization of the valve island fails. This failure case is indicated by the following permanent Status LED states:

- P1 – off
- P2 – off
- BF – off
- SF – red
- VB – green
- VA – green

2.3 Intermediate supply/exhaust module (ISEM)

In cases where the channel diagnostics is activated on the valve island, the channel diagnostics setting should be disabled at the position of each ISEM. This needs to be done in order to avoid any misleading failure indication due to missing electronic components in the ISEM.

3 Electrical connections of the VS18/VS26 valve island



Top view VS18 with 8 stations

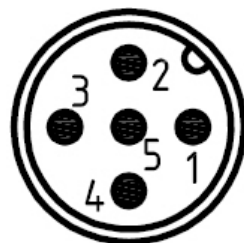
1. Port 1 bus connector for PROFINET
(4 pins M12 D-coded female connector)
2. Port 2 bus connector for PROFINET
(4 pins M12 D-coded female connector)
3. Power supply connector
(5-pins M12 A-coded male connector)
4. Status LEDs
5. Valve status LEDs

3.1 PROFINET Bus connectors Port 1 & Port 2



M12 / 4 pins / female / D-coded	
Pin no.	Function
1	Transmission Data + (TD+)
2	Receive Data + (RD+)
3	Transmission Data - (TD -)
4	Receive Data - (RD -)
Housing	FE (functional earth)

3.2 POWER supply connector



M12 / 5 pins / male / A-coded	
Pin no.	Function
1	L1 (VB+) 24V electronics power supply
2	N2 (VA-) 0V valves power supply
3	N1 (VB-) 0V electronics power supply
4	L2 (VA+) 24V valves power supply
5	FE (functional earth)

4 Commissioning

The method of PROFINET module installation strongly depends on the configuration software. Please refer to the configuration software manual.

All the examples in this document are made with Siemens TIA Portal V13.

4.1 GSDML file installation

A device description file (GSD-file) is needed for configuration of the valve island. The GSD-file is in XML Format (GSDML) and could be used for both variants VS18 and VS26:

➔ *GSDML-V2.32-IMI_Norgren-Vx_IMI-JJJJMMDD.XML*

Note: "JJJJMMDD"(JJJJ- year, MM-month, DD-day) is date of release

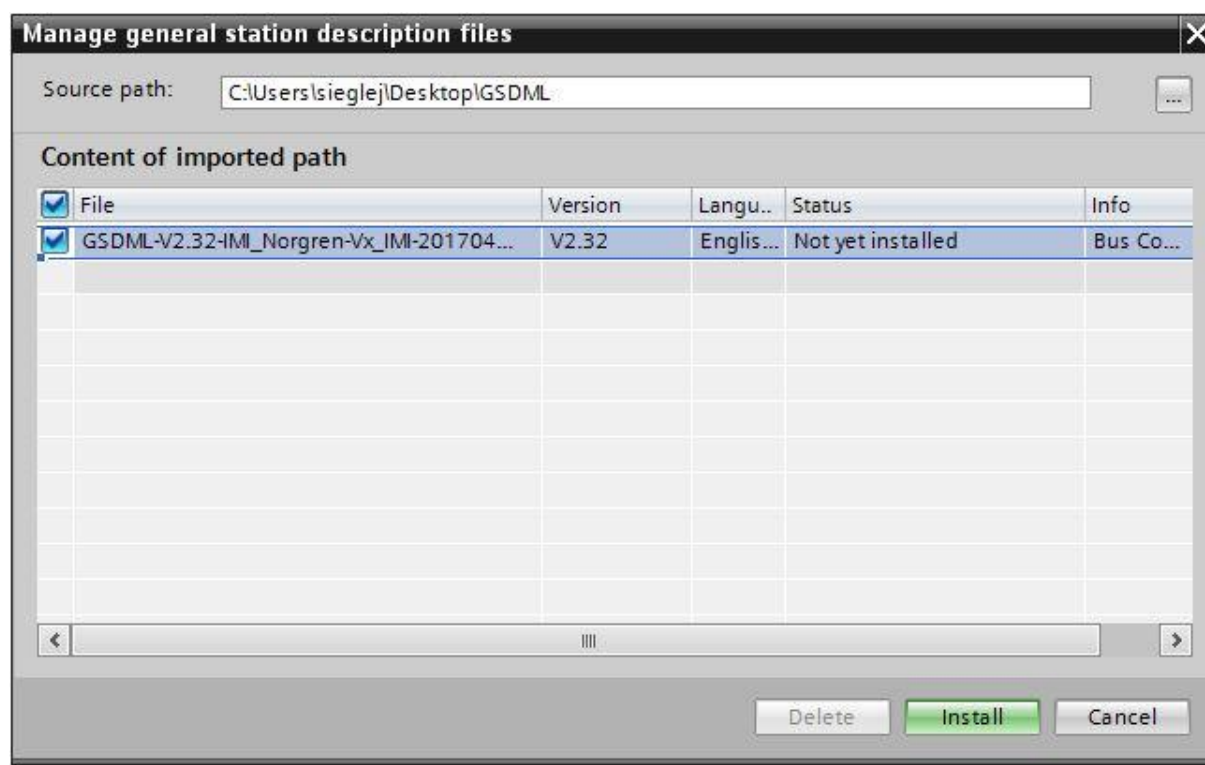
The GSDML file has to be installed inside the engineering tool of the PROFINET controller.

The symbol file is used to visualize the device in the engineering tool. XML files are provided by the device vendor and can be downloaded from:

➔ <https://www.imi-precision.com/uk/en/technical-support/software>

Open GSDML-file Import editor:

"Options" -> "Manage general station description files"

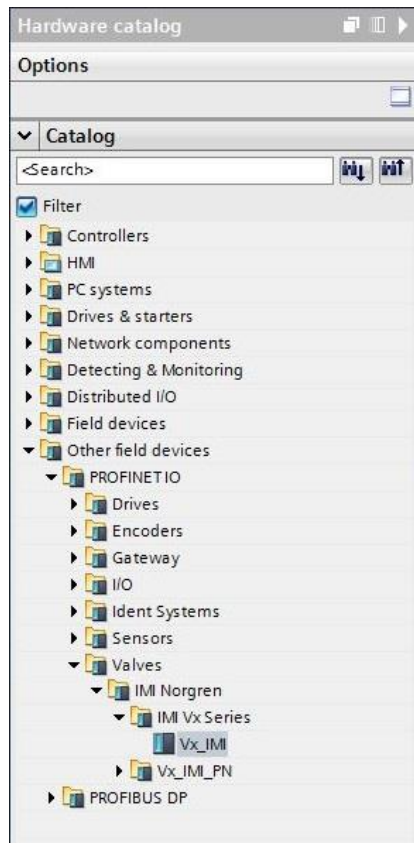


After the successful installation of the GSDML-file the VS18/26 is listed in the Hardware catalog.

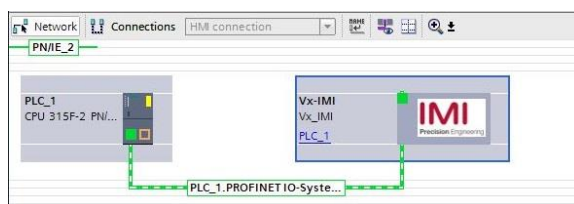
4.2 Hardware configuration: Select valve island

After successful GSDML installation the valve island appears in category „Other field devices >...> Vx_IMI“.

Drag the Vx_IMI valve island entry and drop it into the PROFINET-IO system.



Hardware catalogue after installation of the XML file



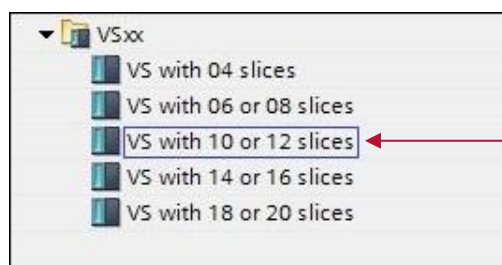
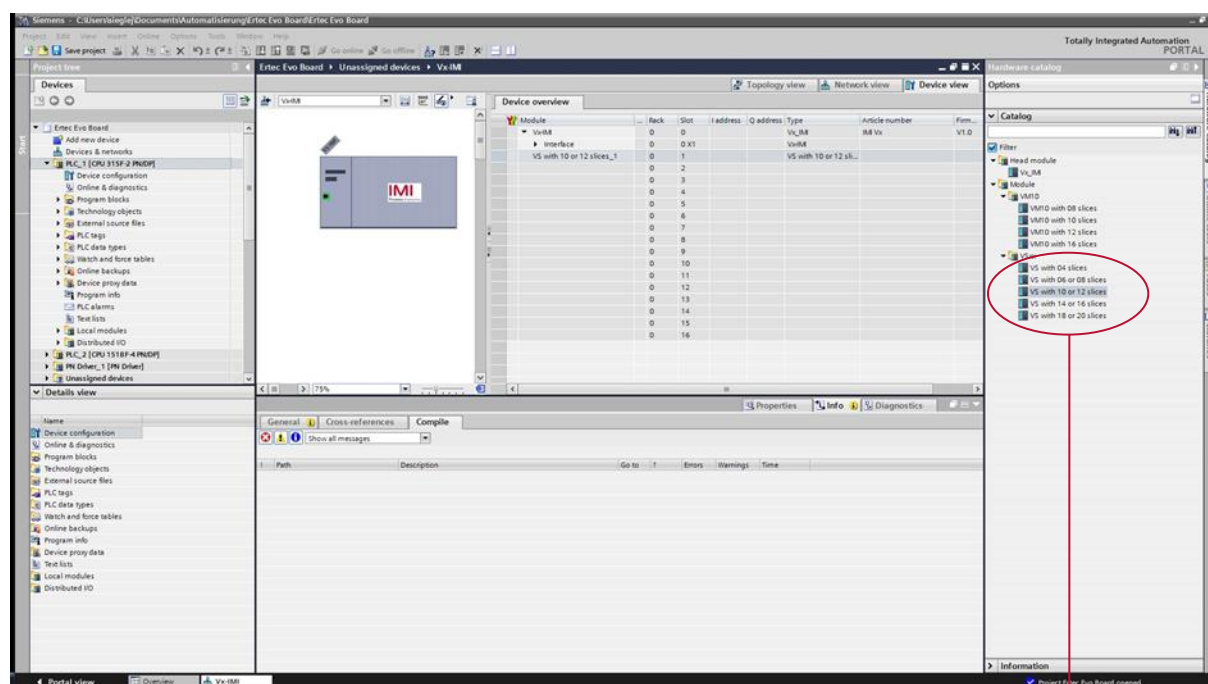
View after adding the valve island

As a next step the valve module has to be assigned to slot 1. The following table shows which valve module has to be chosen for which physical configuration.

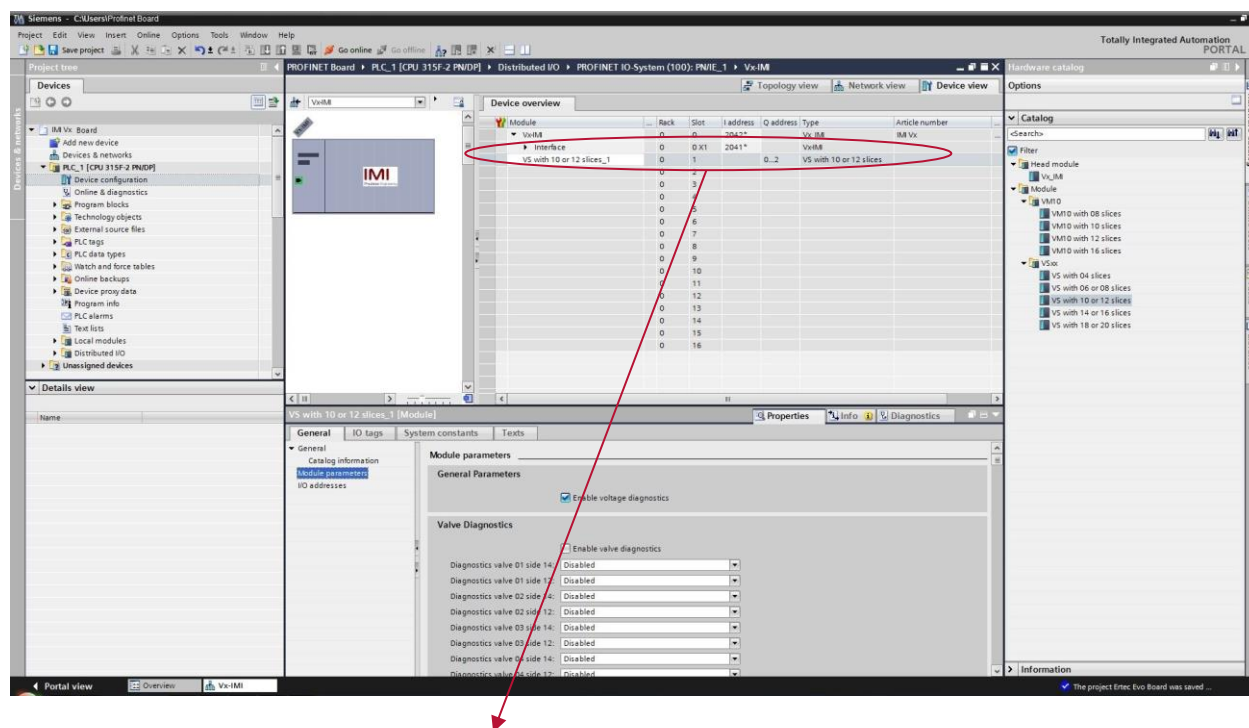
Please check the correct number of valve slices on the valve island. An empty slice is also counted as a valve slice.

Number of valve slices	Module Name
4	„VS with 04 slices“
6	„VS with 06 or 08 slices “
8	„VS with 08 or 10 slices “
10	„VS with 10 or 12 slices “
12	„VS with 10 or 12 slices “
14	„VS with 14 or 16 slices “
16	„VS with 14 or 16 slices “
18	„VS with 18 or 20 slices “
20	„VS with 18 or 20 slices “

Table: Device name assignment



Device selection



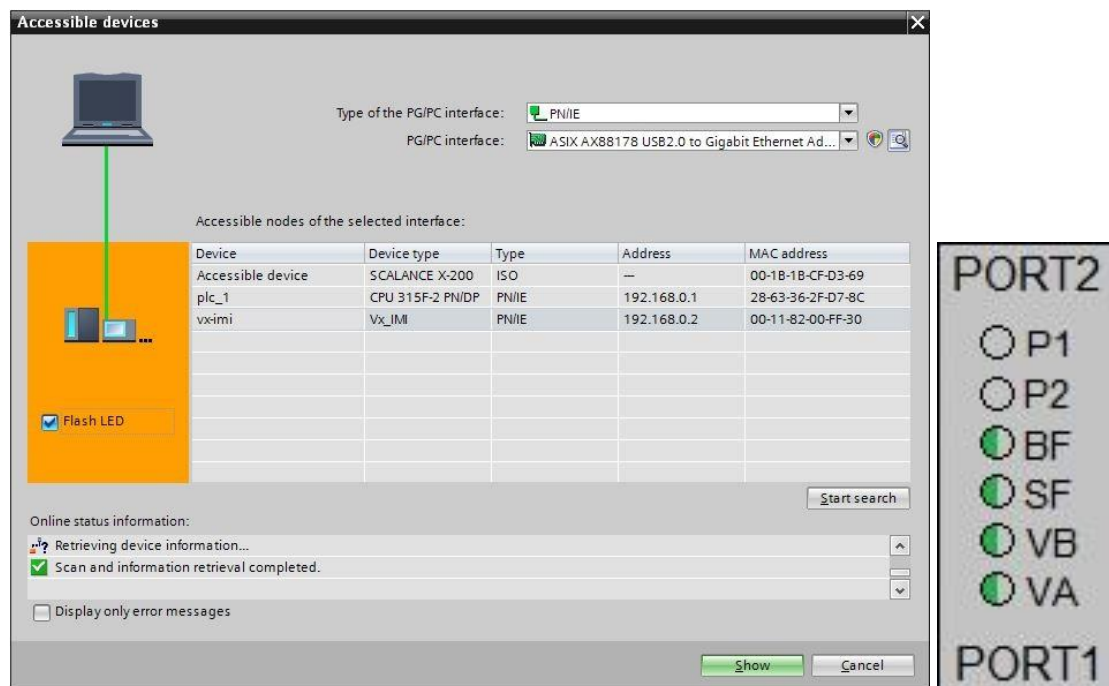
Device overview							
Module	Rack	Slot	I address	Q address	Type	Article number	
▼ Vx-IMI	0	0	2042*		Vx-IMI	IMI Vx	
► Interface	0	0 X1	2041*		Vx-IMI		
VS with 10 or 12 slices_1	0	1		0...2	VS with 10 or 12 slices		
	0	2					
	0	3					
	0	4					
	0	5					

View after adding VS device with 10 or 12 valve stations

4.3 Identifying devices in the network „Blink Test“

PROFINET devices are identified by using their MAC address and device type. Use the configuration tool to identify all PROFINET modules in the network.

“Online” -> “Accessible devices”



Mark an available valve island and enable checkbox “Flash LED”. This activates the LEDs: „BF“, „SF“, „VA“, „VB“ flashing in green color for 3 seconds

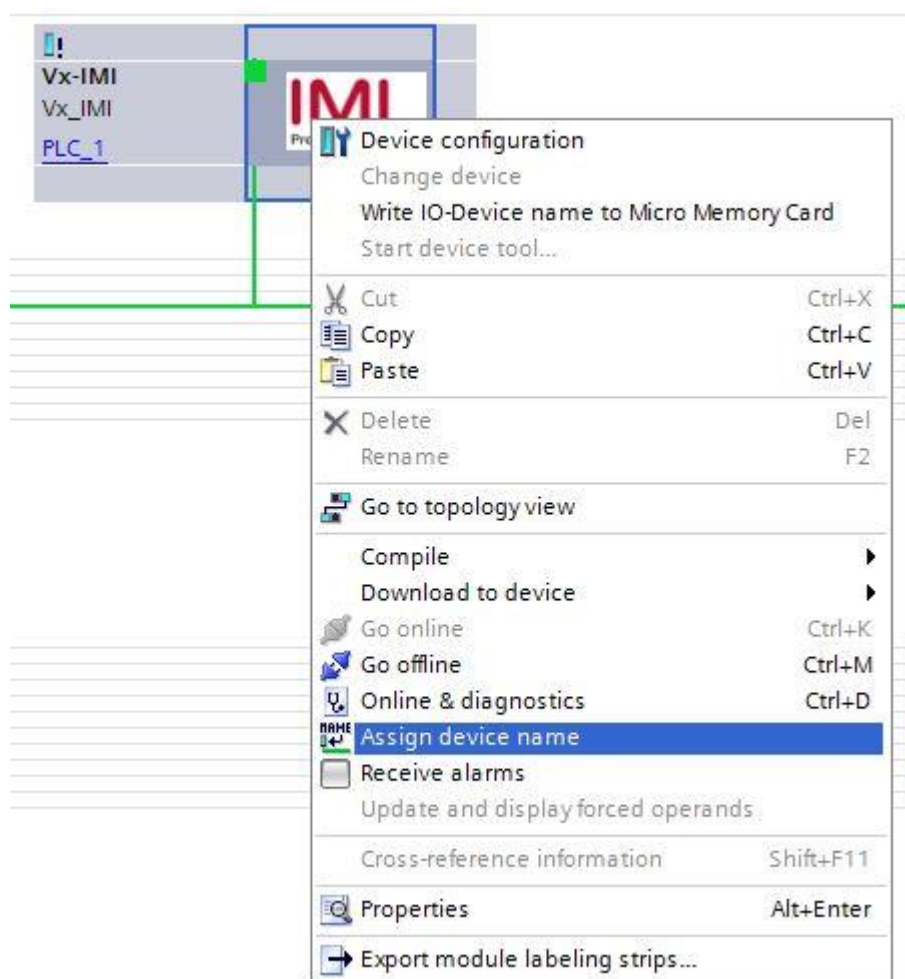
4.4 Assignment of device name

Before the PROFINET communication between PROFINET controller and valve island is able to start, a unique device name has to be assigned. The device name is stored on the valve island.

Note

Several engineering- and service tools are able to assign PN device names (E.g. PROFINET Commander, PRONETA, TIA). There are also different ways to assign the device name in TIA Portal.

Right Click on the valve island in the “Network View” of TIA opens its context menu in “Online-mode”. Press “Assign device name” item to open the „Assign PROFINET device name“ dialog.



Enter a unique device name for the valve island in the “PROFINET device name” field. Push the “Assign name” button to assign the entered device name.

Assign PROFINET device name.

Configured PROFINET device

PROFINET device name: vx-imi
Device type: Vx_IMI

Online access

Type of the PG/PC interface: PN/IE
PG/PC interface: ASIX AX88178 USB2.0 to Gigabit Ethernet Ad...

Device filter

☒ Only show devices of the same type
☐ Only show devices with bad parameter settings
☐ Only show devices without names

Accessible devices in the network:

IP address	MAC address	Device type	PROFINET device name	Status
0.0.0.0	00-11-82-00-FF-30	IMI Vx Ser...	--	No device name assigned

☐ Flash LED

Update list Assign name

Online status information:
Search completed. 1 of 3 devices were found.

Close

Assign PROFINET device name dialog

After successful name assignment the status of the valve island in the device list will change to OK.

Accessible devices in the network:

IP address	MAC address	Device type	PROFINET device name	Status
0.0.0.0	00-11-82-00-FF-30	IMI Vx Ser...	vx-imi	OK

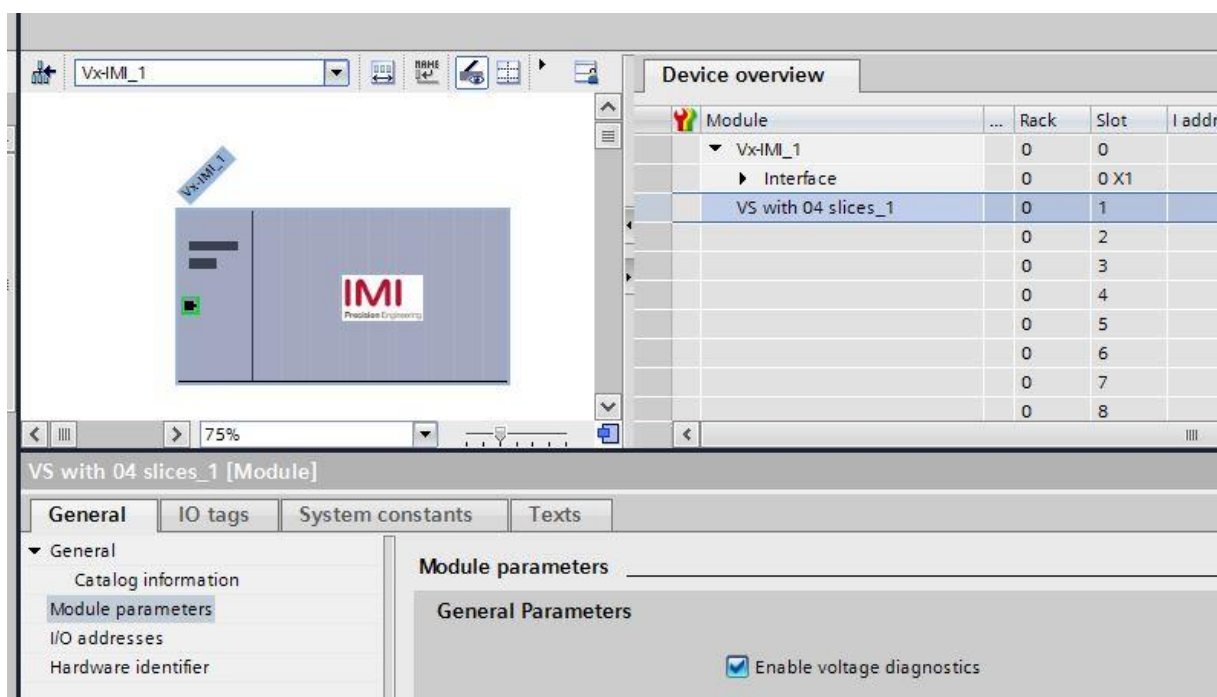
Update list Assign name

List with accessible devices in the network

4.5 Parameterization

During system startup a parameter set is loaded to the valve island by the PROFINET controller. The parameter set of the valve module is divided into the sections “General Parameters”, “Valve Diagnostics” and “Substitute behavior”.

Those parameters are accessible on the “Properties” page of the valve module using the “Device view” of TIA.

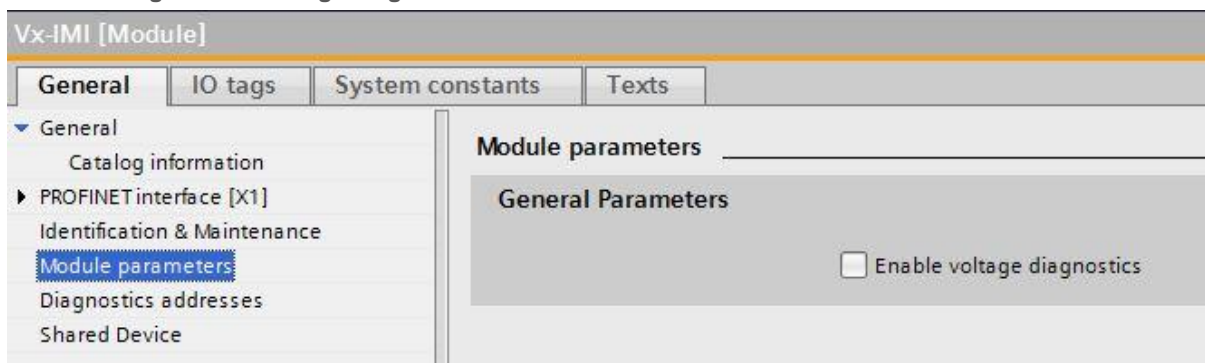


4.5.1 General Parameters

It is possible to enable/disable the voltage monitor of the valve module.

If disabled, in case of over/under voltage no PROFINET diagnostic alarm appears and the relating LEDs on the valve island don't change from green to red color as well. Otherwise, a PROFINET module diagnostic alarm appears (error code see chapter 7) and the relating LEDs on the valve island change to red (see also chapter 6.5 and 6.6).

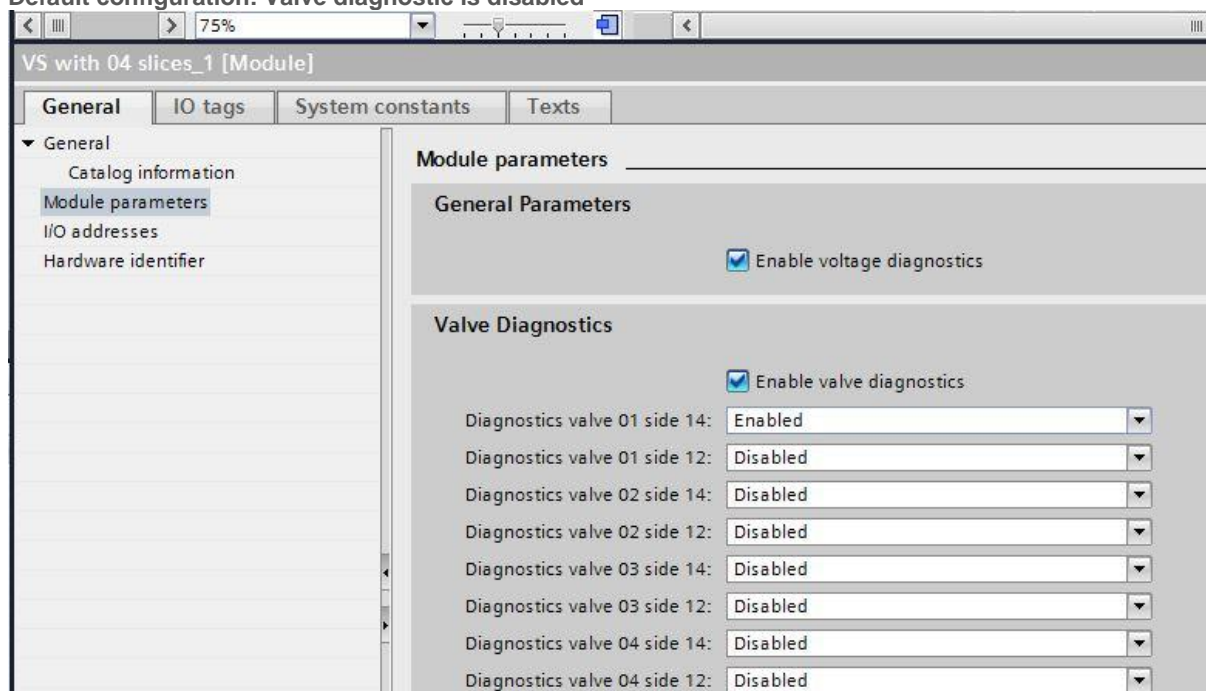
Default configuration: Voltage diagnostic is enabled



4.5.2 Valve Diagnostics

It is possible to enable/disable the valve diagnostics (channel diagnostic) in general or for each single solenoid. If disabled, in case of a wire break or a short circuit of a solenoid no PROFINET diagnostic alarm appears and the SF LED remains green as well. Otherwise a PROFINET channel diagnostic alarm appears (with error code and channel number) and the SF LED changes state (see also chapter 6.4).

Default configuration: Valve diagnostic is disabled

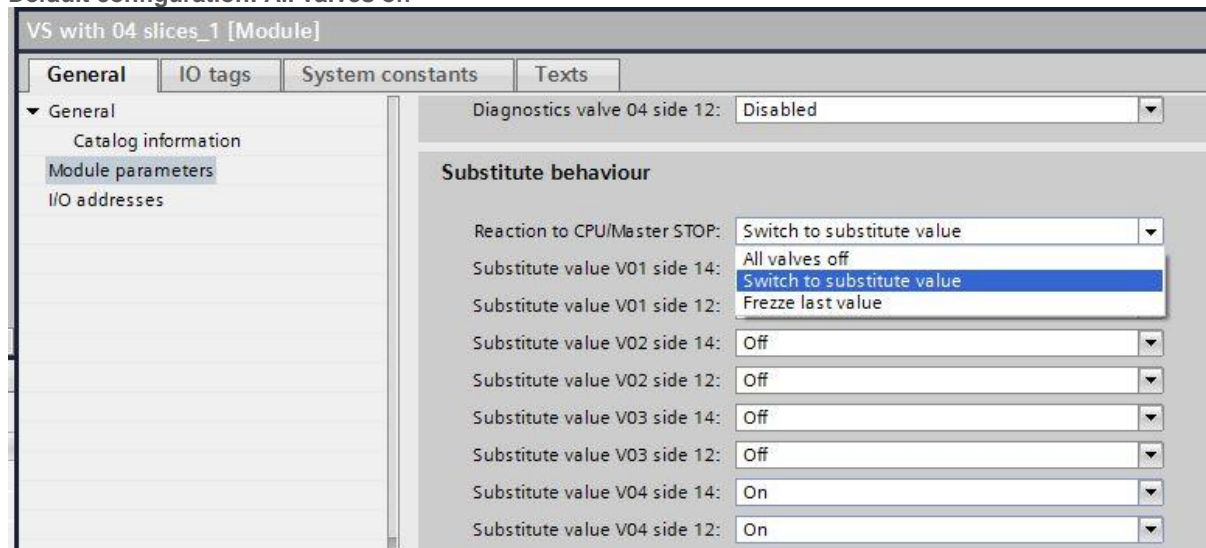


4.5.3 Substitute behavior

It is possible to define the behavior of the outputs in case of “IOPS = Bad” (PLC stopped) or broken PROFINET communication. The following states could be defined by the outputs:

- ➡ Clear output
- ➡ Set output
- ➡ Freeze output

Default configuration: All valves off



4.6 Compilation and download

After finished configuration please compile the project and download it to the PROFINET controller (PLC).

5 Output data

5.1 Address assignment

To calculate the length of the used output data (in bytes) for the VS18/VS26 valve configuration please use the following formula:

$$B(\text{Bytes}) = \frac{V * 2 + ((V * 2) \text{MOD} 8)}{8}$$

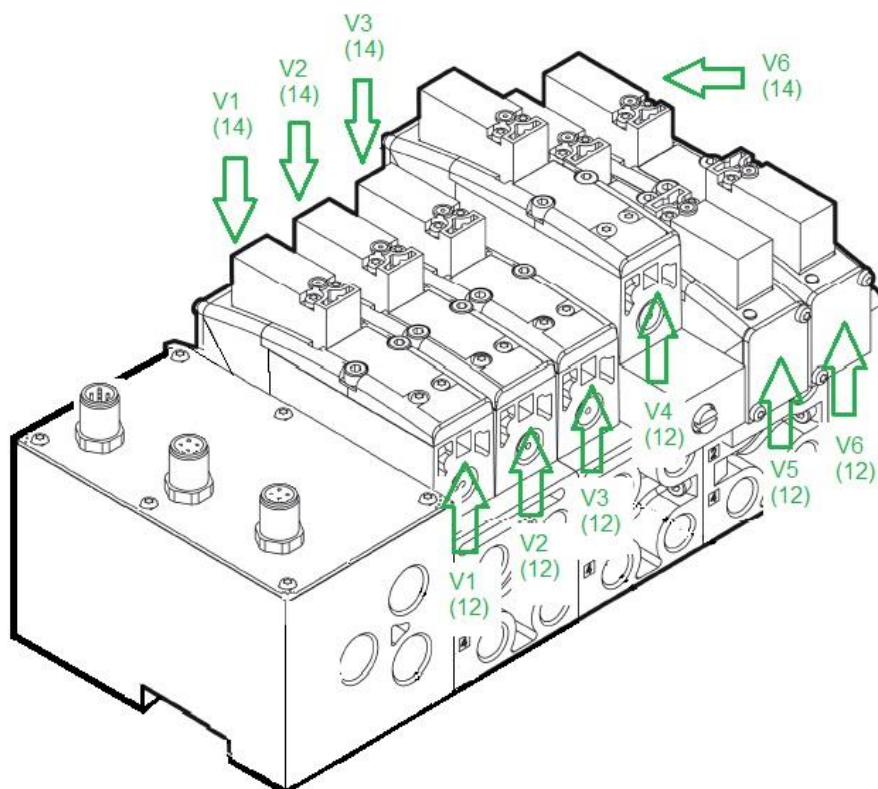
$V \in \{4, 6, 8, 10, 12, 14, 16, 18, 20\}$.

Whereby 'V' = number of valve slices and 'MOD' = Modulo-Operator

E.g. for a valve island with 6 valve slices

$$B = \frac{6 * 2 + (6 * 2) \text{MOD} 8}{8} = \frac{12 + 12 \text{MOD} 8}{8} = \frac{16}{8} = 2$$

i.e. there are 2 bytes reserved for 6 valve slices



The picture shows VS valve island with 6 valve slices

The table below shows the assignment for maximum configuration of 16 valve slices. For every valve two bits will be reserved – one bit for solenoid 14 and one bit for solenoid 12

byte	Bit								total valve number								
	7	6	5	4	3	2	1	0	4	6	8	10	12	14	16	18	20
0	V 04		V 03		V 02		V 01		X	X	X	X	X	X	X	X	X
	S 12	S 14	S 12	S 14	S 12	S 14	S 12	S 14									
1	V 08		V 07		V 06		V 05			X	X	X	X	X	X	X	X
	S 12	S 14	S 12	S 14	S 12	S 14	S 12	S 14									
2	V 12		V 11		V 10		V 09					X	X	X	X	X	X
	S 12	S 14	S 12	S 14	S 12	S 14	S 12	S 14									
3	V 16		V 15		V 14		V 13							X	X	X	X
	S 12	S 14	S 12	S 14	S 12	S 14	S 12	S 14									
4	V 20		V 19		V 18		V 17									X	X
	S 12	S 14	S 12	S 14	S 12	S 14	S 12	S 14									

(V = Valve no., S = Solenoid side, X = Bytes reserved)

5.2 Output behavior at power up and in fault condition

At power up all outputs are cleared. The initialization phase of the valve island is indicated by a one by one activation of the status LEDs BF, SF, VA, VB and the status LEDs of the valve stations.

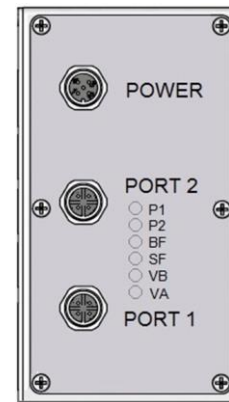
In case of fault condition (broken communication, “IOPS = bad”) the outputs switch to those values which are configured in the “substitute behavior” parameter set (see also chapter 4.5.3).

6 Diagnostics and LEDs

6.1 Status LEDs

6.1.1 Status LEDs description

LED Name	Description
P1	Link Port 1 (TX/RX & Link)
P2	Link Port 2 (TX/RX & Link)
BF	Bus Error
SF	System Error
VB	Electronic Power Supply Status
VA	Valve Power Supply Status



6.1.2 Link states for Port P1 and Port P2

Link Status	LED State
Link connection established	yellow
Link communication active	flashing yellow / green
Link connection not established	off

6.1.3 Bus Error Status LED (BF)

Bus Status	LED State
No error	green
Device is offline	red
Hardware configuration and parameterization is not plausible	flashing, red
IOPS = BAD	triple flashing, red
PROFINET Software is not initialized	off

6.1.4 Error Status LED (SF)

System-Status	LED State
No error	green
Solenoid, short circuit or open circuit	flashing, red
Error, internal communication	double flashing, red
Fatal error	triple flashing, red
Hardware configuration is not plausible	red
Device is not initialized	off

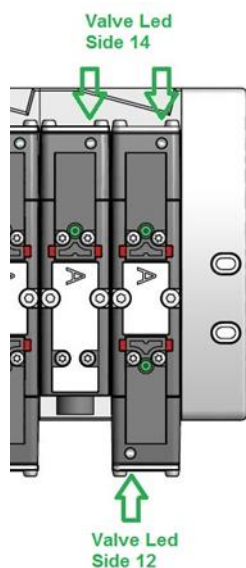
6.1.5 Electronics Power Supply Status, LED (VB)

Status	LED State
Voltage OK	green
Undervoltage	flashing red
Overvoltage	permanent red

6.1.6 Valve Power Supply Status, LED (VA)

Status	LED State
Voltage OK	green
Undervoltage	flashing red
Overvoltage	red

6.2 Valve slice Status LEDs



Each valve slice has one or two separate status LEDs depending on its configuration, which indicate the control states “14” and “12” for the corresponding pilot valve solenoids.

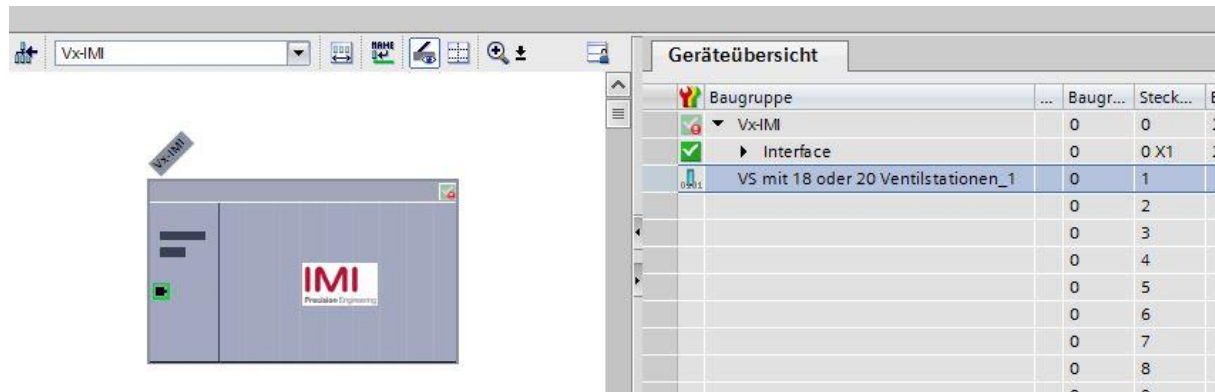
Status	LED State
Valve not powered	off
Valve powered	on

6.3 Online diagnostics with Siemens TIA Portal

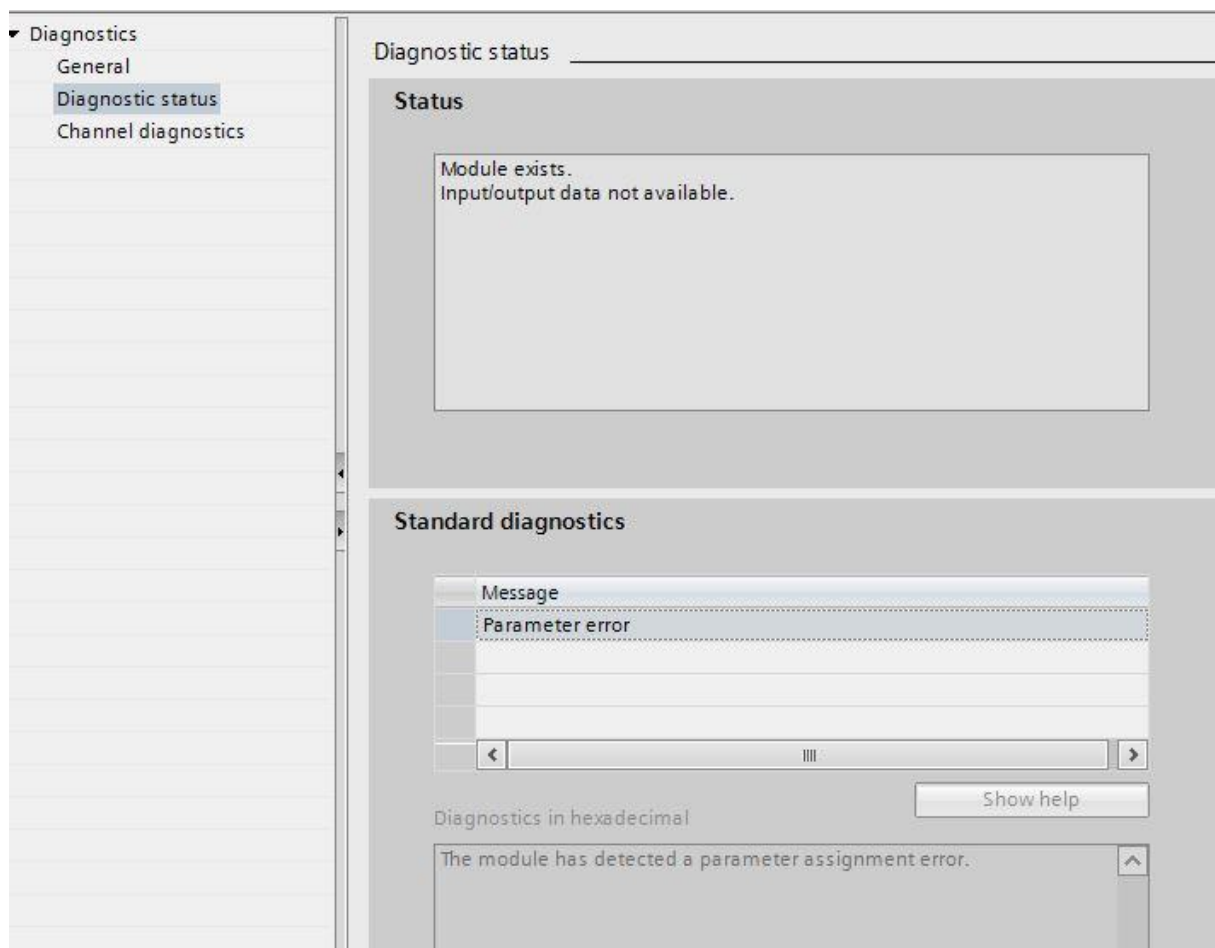
Use the “Network View” or “Device View” and “Go online” for PROFINET diagnostics of the network or device.

6.3.1 Wrong module

In case of a mismatch between configured module and physically module on slot 1 the module is marked with a parameter error symbol in the “Device overview” of the “Device view”.

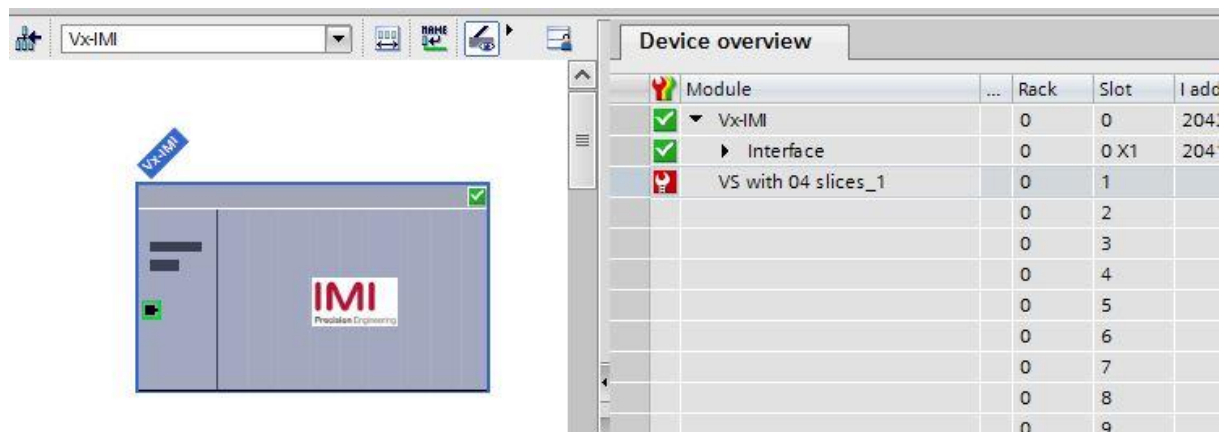


Double click the symbol to change into diagnostics view of the module. Highlight the “Diagnostic status” line to get detailed information about the pending module diagnostics

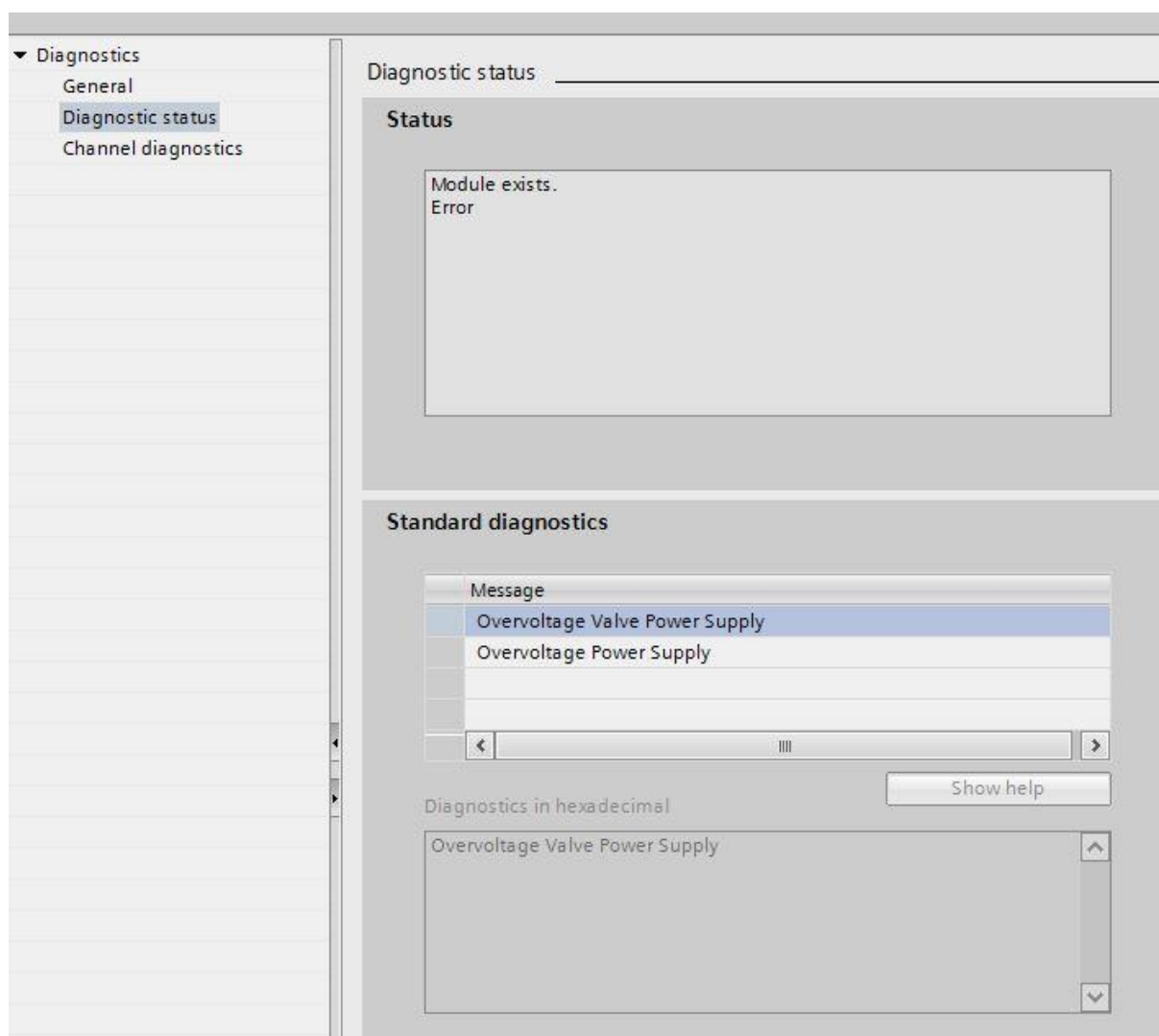


6.3.2 Module diagnostics (e.g. under/overvoltage)

In case of pending module diagnostics of the valve island (e.g. under/overvoltage) the module is marked with a red symbol in the “Device overview” of the “Device view”.

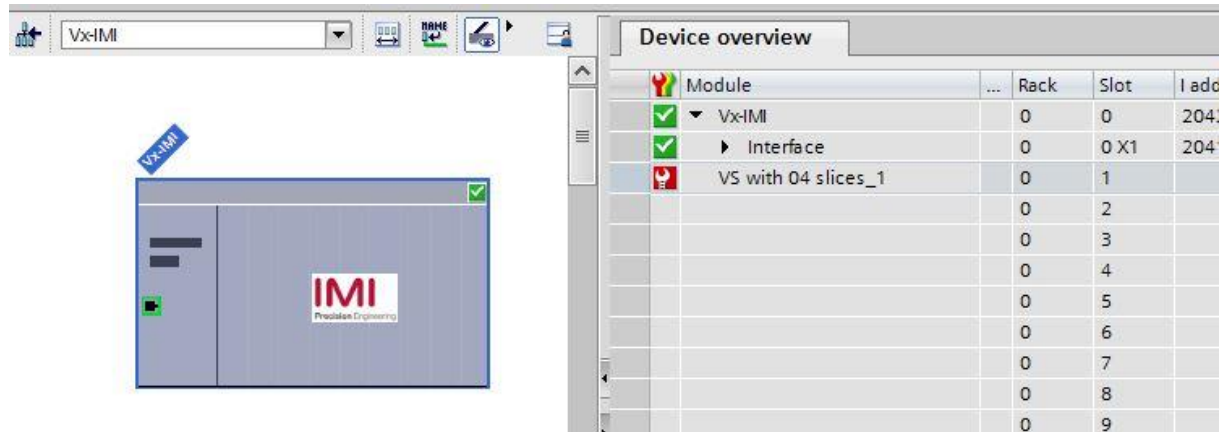


Double click the red symbol to change into diagnostics view of the module. Highlight the “Diagnostic status” line to get detailed information about the pending module diagnostics

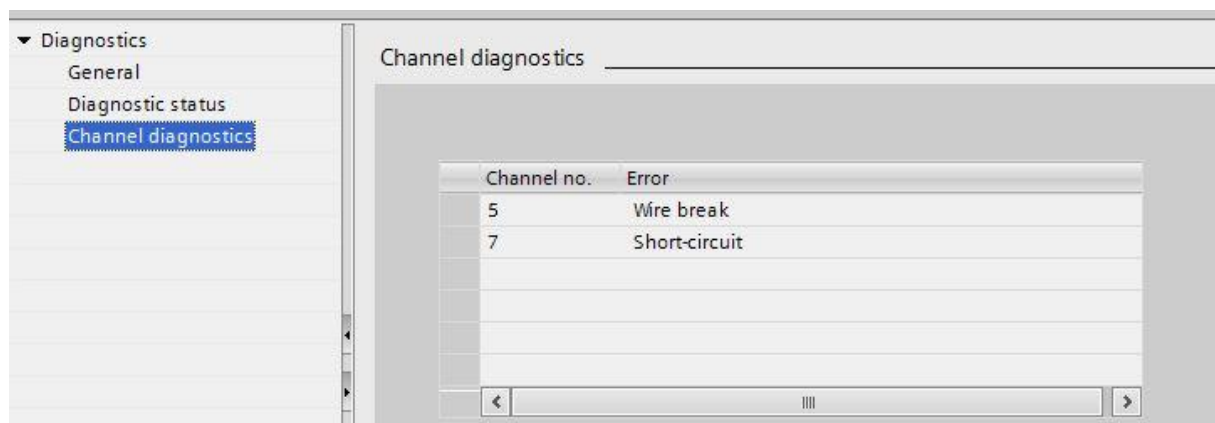


6.3.3 Channel diagnostics (e.g. wire break of solenoid)

In case of pending channel diagnostics of the valve island (e.g. wire break or short circuit of a solenoid) the module is marked with a red symbol in the “Device overview” of the “Device view”.



Double click the red symbol to change into diagnostics view of the module. The channel number and the error reason are shown in the “Channel diagnostics” table.



The allocation between channel number and solenoid is shown in the following table:

Valve 1...4	V04-12	V04-14	V03-12	V03-14	V02-12	V02-14	V01-12	V01-14
Channel number	8	7	6	5	4	3	2	1
Valve 5...8	V08-12	V08-14	V07-12	V07-14	V06-12	V06-14	V05-12	V05-14
Channel number	16	15	14	13	12	11	10	9
Valve 12...9	V12-12	V12-14	V11-12	V11-14	V10-12	V10-14	V09-12	V09-14
Channel number	24	23	22	21	20	19	18	17
Valve 13...16	V16-12	V16-14	V15-12	V15-14	V14-12	V14-14	V13-12	V13-14
Channel number	32	31	30	29	28	27	26	25
Valve 17...20	V20-12	V20-14	V19-12	V19-14	V18-12	V18-14	V17-12	V17-14
Channel number	40	39	38	37	36	35	34	33

7 PROFINET error codes

Error code (hexadecimal)	Error description	Associated LED
0x00	OK, no errors	„SF“ LED, green
0x01	Solenoid, short circuit	„SF“ LED, flashing red
0x06	Solenoid, open circuit	„SF“ LED, flashing red
0x100	Undervoltage electronic supply	„VB“ LED, flashing red
0x101	Overvoltage electronic supply	„VB“ LED, red
0x102	Undervoltage valve supply	„VA“ LED, flashing red
0x103	Overvoltage valve supply	„VA“ LED, red

8 Properties PROFINET interface

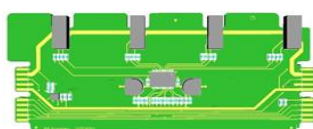
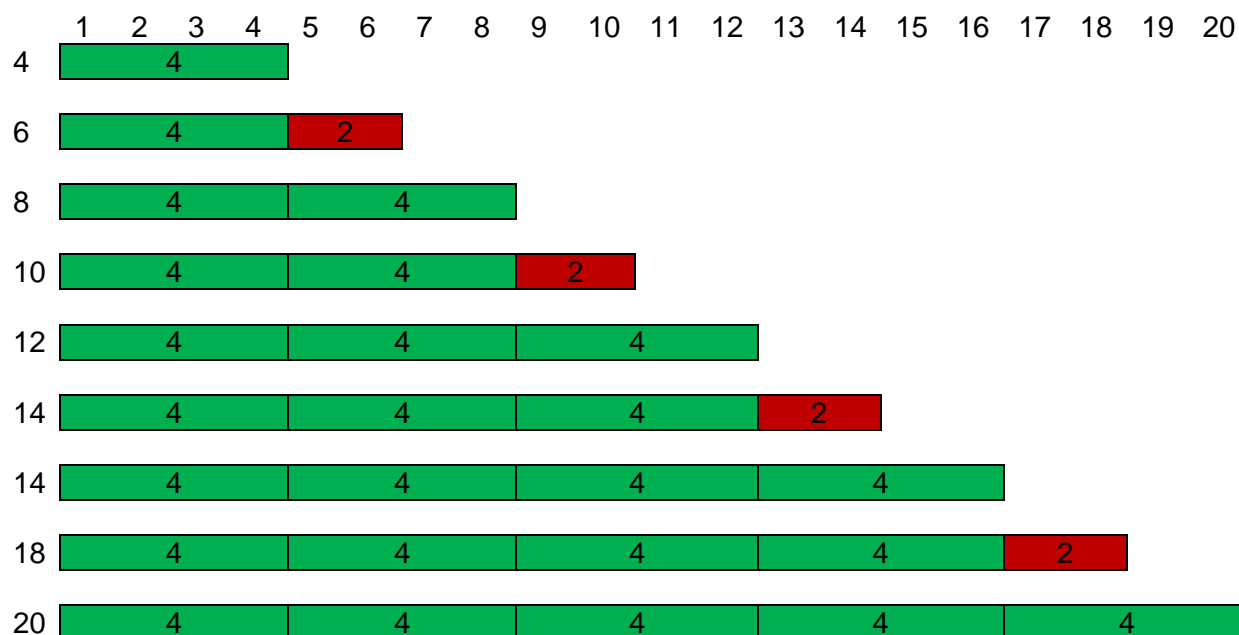
Requirements		Comments
Number of ports	2	---
Transfer speed	100Mbit/s	---
Duplex mode	Full Duplex	---
RT mode	supported	Real Time Protocol
IRT mode	supported	Isochronous Real Time Protocol
MRP mode	supported	Media Redundancy Protocol (possible to switch between redundant transmission paths)
PROFINET (certification by PNO)	Compliant to IEC61158, Conformance Class C according to IEC61784	---
Adressing mode	DCP, LLDP + SNMP (Device exchange by the same topology)	---
GSD Language	EN + DE	---

9 Valve island extension

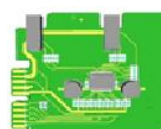
Valve islands can be extended using the 2- and 4-station PCBs as described in this chapter.

9.1 Overview – possible combinations

Below illustration shows an overview of possible combinations of existing PCBs in order to build the required number of valve stations.



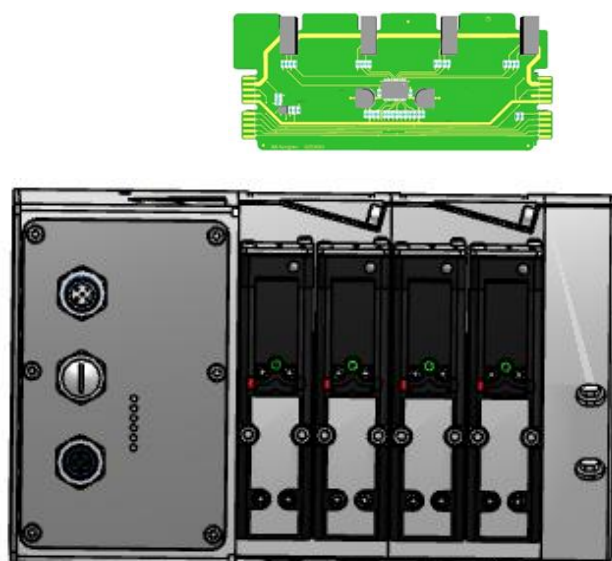
VS2672762-KG00
4 station PCB



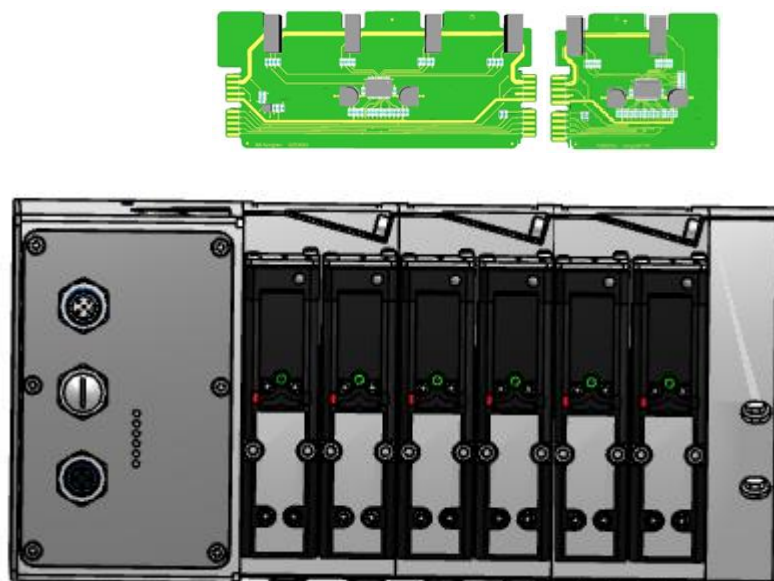
VS2672761-KF00
2 station PCB

2 station PCB can be only mounted at the end

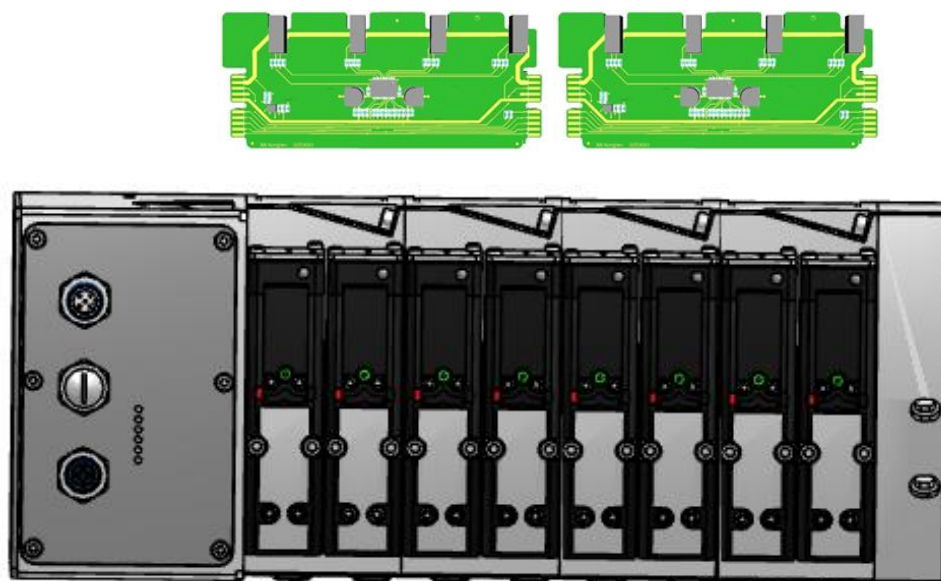
9.2 Valve island with 4 stations



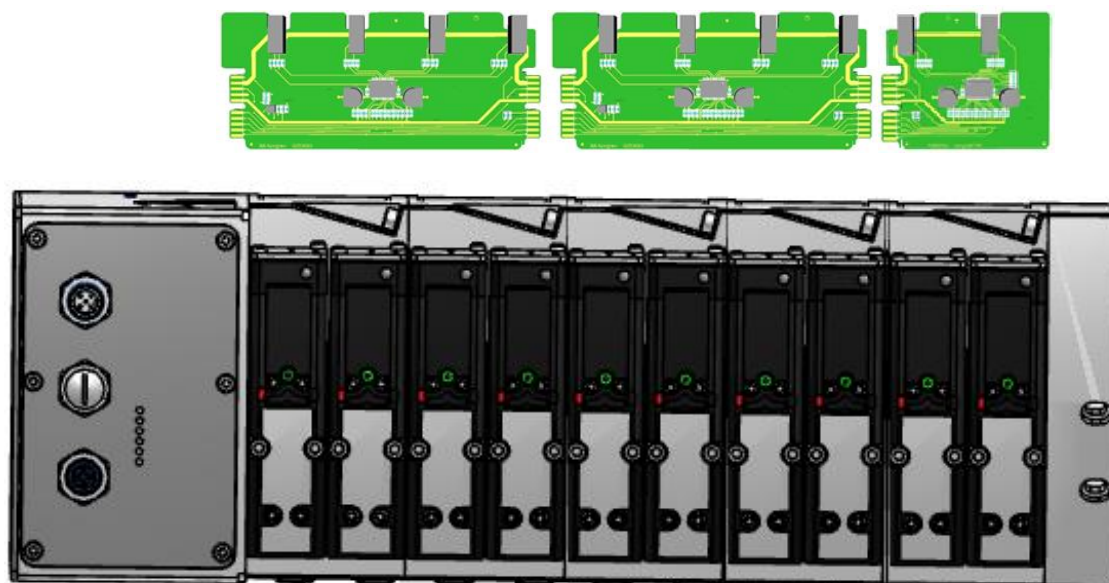
9.3 Valve island with 6 stations



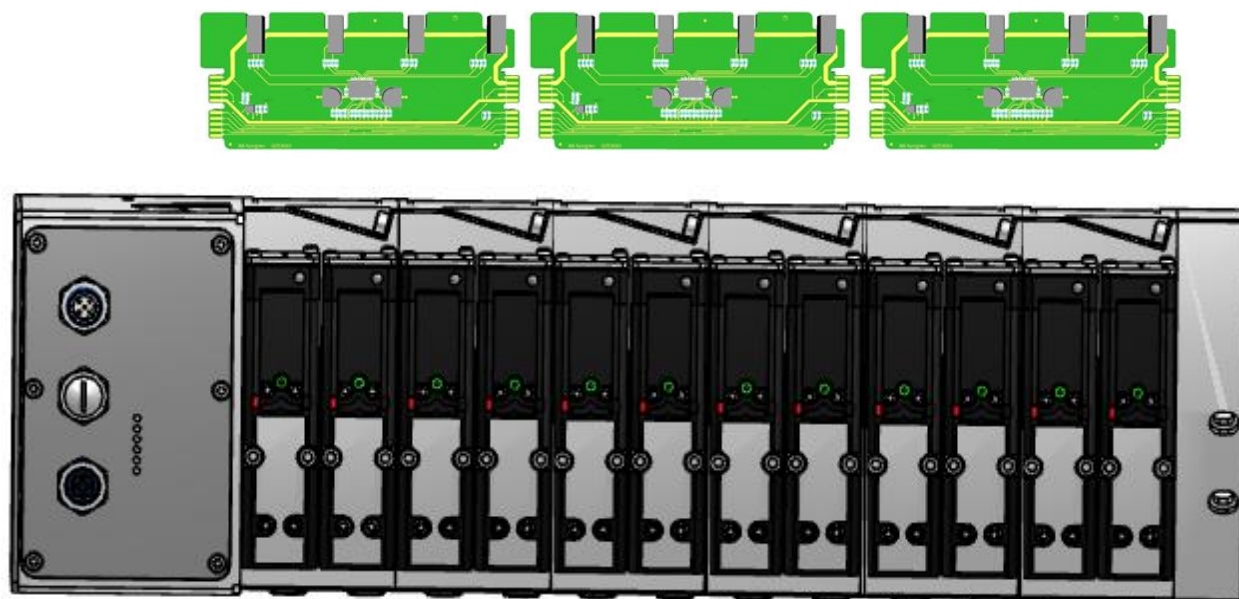
9.4 Valve island with 8 stations



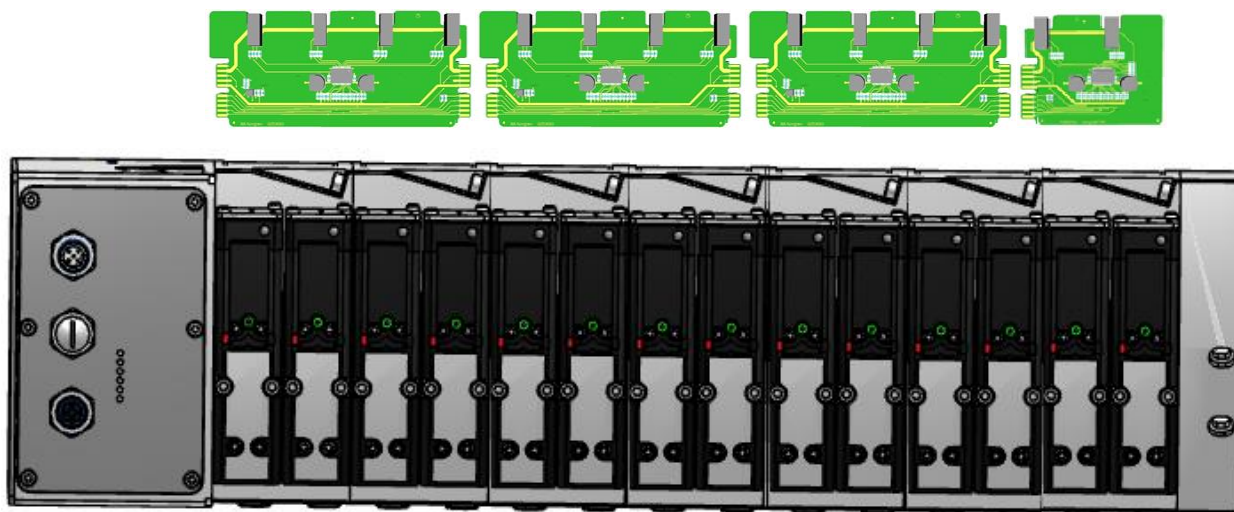
9.5 Valve island with 10 stations



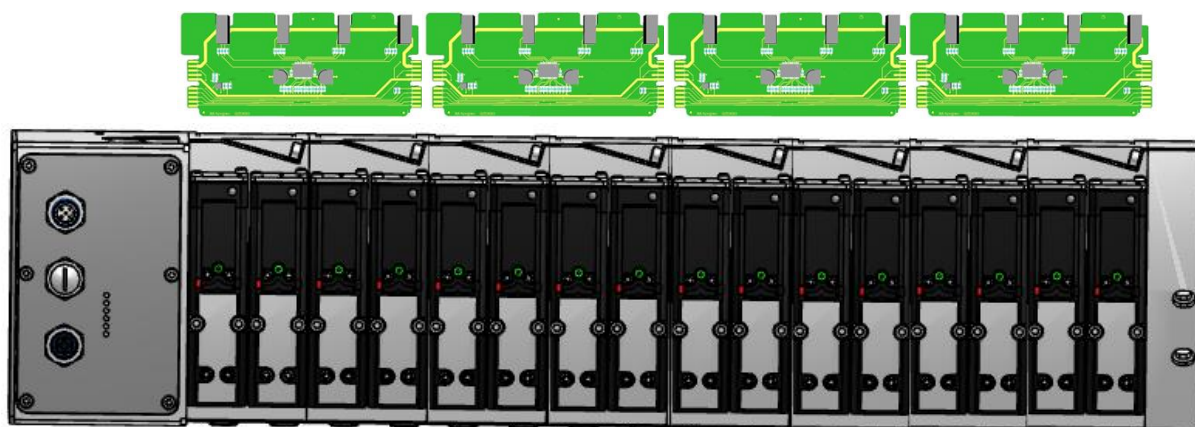
9.6 Valve island with 12 stations



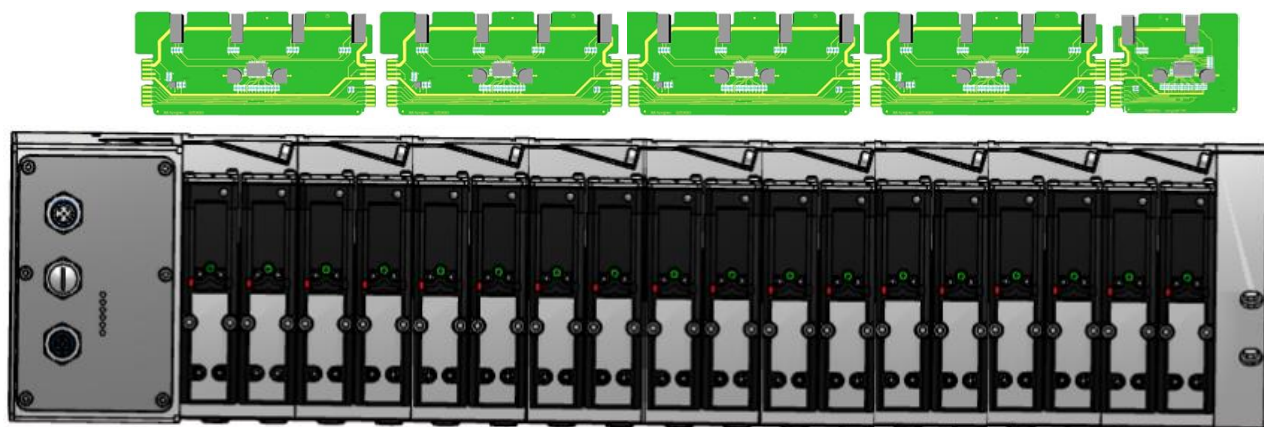
9.7 Valve island with 14 stations



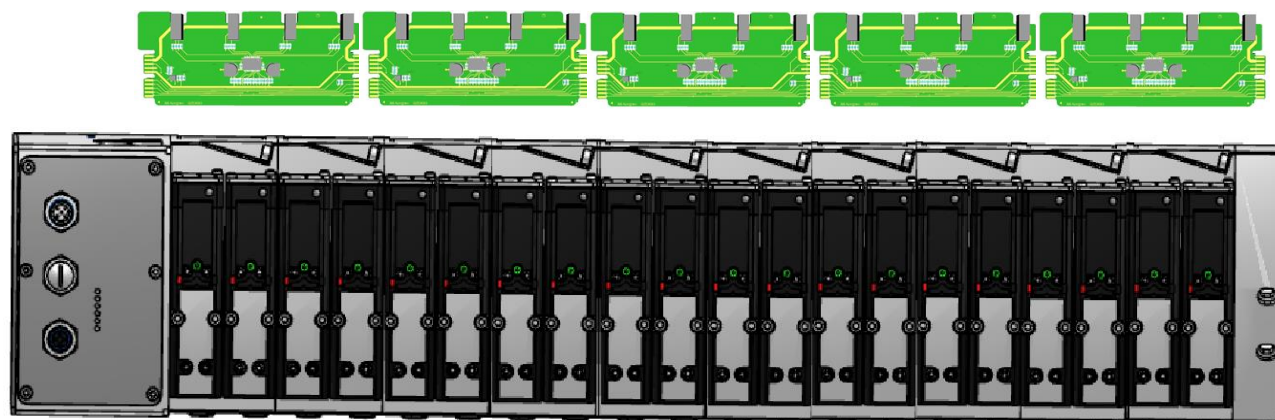
9.8 Valve island with 16 stations



9.9 Valve island with 18 stations



9.10 Valve island with 20 stations



10 Electrical data

Requirements		Comments
Valve voltage range (VA)	24VDC +/-10%	PELV
Electronics voltage range (VB)	24VDC +/-25%	PELV
Maximal currents:	VA: 150mA + n x 30mA VB: 400mA	n = number of activated valves
Voltages are galvanic decoupled	Yes	--
Protection against polarity reversal	Yes	--
Overcurrent protection VB, VA	irreversible	Protection against overload and short-circuit currents, fused with 2A slow-acting fuse
PE/FE/Ground connection	M4 thread on the rear of the connection module	Reference section 2.1
Electrical power supply connection	M12/5-pin A-coded male connector	M12-1: L1 (VB+) M12-2: N2 (VA-) M12-3: N1 (VB-) M12-4: L2 (VA+) M12-5: FE
Bus connection	M12/4-pin D-coded female connector	M12-1: TD+ M12-2: RD+ M12-3: TD- M12-4: RD- Housing: FE (Functional Earth)

11 Technical data

11.1 Technical data VS18 and VS26

Medium:

Compressed air, filtered to 40µm, lubricated and non - lubricated

Operation:

VS18G / VS26G: Glandless spool valve, solenoid pilot actuated

VS18S / VS26S: Softseal spool valve, solenoid pilot actuated

Mounting:

Sub-base

Operating pressure:

Maximum pressure

10 bar VS18S / VS26S models and VS18G / VS26G solenoid pilot actuated valves with internal pilot supply

16 bar VS18G / VS26G solenoid pilot actuated valves with external pilot supply

Ambient temperature:

-15°C to +50°C

Medium temperature:

-5°C to +50°C (Consult our Technical Service for use below +2°C)

Materials:

Body/sub-base: die-cast aluminium

Glandless spool & sleeve: Aluminium, hard anodized, Teflon coated

Softseal spool: Aluminium with HNBR seals

Plastic parts: POM, PA, PPA

Mounting sheets / screws: Steel, zinc coated

Springs: Stainless steel

Sandwich plates: Aluminium bar materials, PA

Electrical contacts: Brass, tin coated

PCB: Glass epoxy

11.2 Technical data VS18

Ports 2+4:

G1/8, NPTF 1/8, PIF 8 mm, PIF 6 mm, PIF 1/4

Valves:

ISO 15407-2 - 18 mm

Flow:

Serie	Function	Cv [dm ³ / s * bar]	'C'	'A'	QN [l/min]	kv
VS18G	5/2	2,30	0,20	8,83	550	0,56
VS18G	5/3	2,30	0,20	8,83	550	0,56
VS18S	2x2/2	2,30	0,20	8,82	550	0,56
VS18S	2x3/2	2,20	0,26	9,67	600	0,61
VS18S	5/2	2,58	0,29	10,51	650	0,66
VS18S	5/3	2,58	0,29	10,51	650	0,66

11.3 Technical data VS26

Ports 2+4:

G1/4, NPTF 1/4, PIF 10 mm, PIF 8 mm, PIF 3/8

Valves:

ISO 15407-2 - 26 mm

Flow:

Serie	Function	Cv [dm ³ / s * bar]	'C'	'A'	QN [l/min]	kv
VS26G	5/2	4,27	0,16	16,04	1000	1,02
VS26G	5/3	4,27	0,16	16,04	1000	1,02
VS26S	2x2/2	4,88	0,17	18,40	1150	1,17
VS26S	2x3/2	5,21	0,20	20,05	1250	1,27
VS26S	5/2	5,63	0,20	21,67	1350	1,37
VS26S	5/3	5,63	0,20	21,67	1350	1,37

Customer support

Email contact: Anfragen.Ventilteam@imi-precision.com

Norgren GmbH

Werk Fellbach
Stuttgarter Straße 120
70736 Fellbach
Tel: +49 711 5209 -0

The data specified above only serve to describe the product.

No statements concerning a certain condition or suitability for a certain application can be derived from our information. The information given does not release the user from the obligation of exercising judgment and verification. It must be remembered that our products are subject to a natural process of wear and ageing.

© This document, as well as the data, specifications and other information presented in it are the sole property of Norgren GmbH. It may not be reproduced or given to third parties without their consent.

Subject to change without notice.

Printed in Germany

These instructions were originally written in German.

Order no: 750xxxx.04.15

EN