

# High Capacity Filter

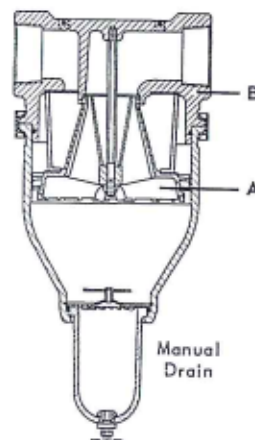
## 1 1/4"-2" • MANUAL & AUTOMATIC DRAIN

### SPECIFICATIONS

PIPE SIZES: 1 1/4", 1 1/2", 2"  
FILTER ELEMENT: 50-MICRON  
BOWLS: 1/2 PT. TRANSPARENT (STANDARD)  
METAL (OPTIONAL)  
MAXIMUM RECOMMENDED OPERATING CONDITIONS:  
TRANSPARENT: 250 PSIG AT 120° F. AMBIENT  
200 PSIG AT 160° F. AMBIENT  
100 PSIG AT 175° F. AMBIENT  
METAL BOWL: 250 PSIG AT 175° F. AMBIENT  
MANUAL OR AUTOMATIC DRAIN

### FEATURES

- A** Improved louver design for positively controlled air movement with low turbulence.
- B** Light weight casting of aluminum with steel bushings in the pipe threads.
- C** High rate of flow with low pressure drop and a high liquid extraction.
- D** Maintenance...easily disassembled. Minimum number of parts.




### ORDER TABLE

Standard models normally available from distributor stock

| DRAIN TYPE | PIPE SIZE | STANDARD MODELS   | OPTIONAL MODELS |
|------------|-----------|-------------------|-----------------|
|            |           | TRANSPARENT BOWLS | METAL BOWLS     |
| Automatic  | 1 1/4"    | 12-063-006        | 12-063-025      |
|            | 1 1/2"    | 12-063-005        | 12-063-024      |
|            | 2"        | 12-063-004        | 12-063-023      |
| Manual     | 1 1/4"    | 12-002-172        | 12-002-178      |
|            | 1 1/2"    | 12-002-171        | 12-002-177      |
|            | 2"        | 12-002-170        | 12-002-176      |

### ACCESSORIES

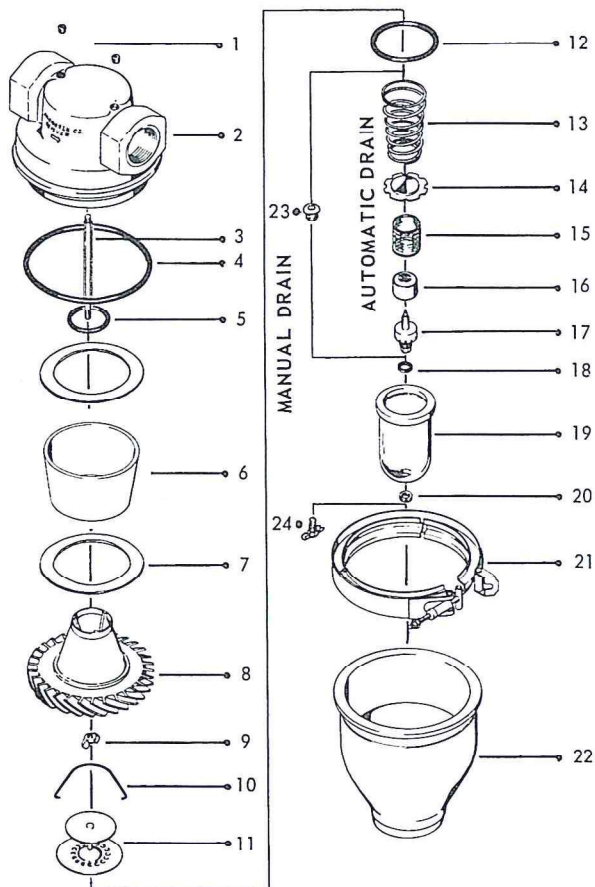
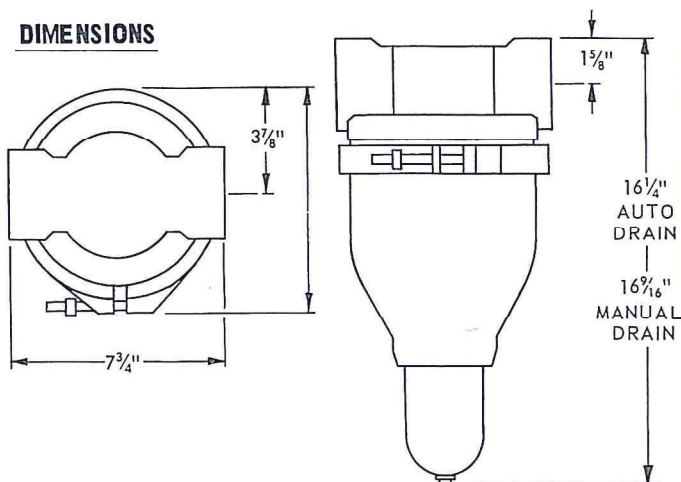
| DESCRIPTION   | ORDER NUMBER |
|---|--------------|
|  <b>BOWL GUARD</b><br>Perforated metal gives positive protection yet allows visibility of bowl contents. | 18-012-003   |

**NORGREN**  
LITTLETON, COLORADO



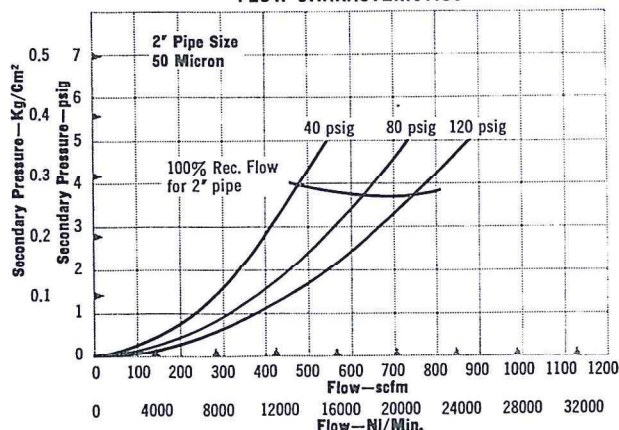


## DIMENSIONS



## PERFORMANCE CHARACTERISTICS

### FLOW CHARACTERISTICS



## MAINTENANCE

For cleaning and servicing, shut off the air pressure and disassemble as follows: Loosen 1/2" nut on clamp ring (21). Remove the intermediate body (22). The filter element may now be removed by unscrewing the wing nut (9), grasping the louver (8) and twisting it slightly to unseat the gaskets. Remove the louver and the filter element (6). Clean the filter element in a cleaning solvent and blow it out with compressed air. It is important to keep the filter element clean.

To remove the bowl (19) from the intermediate body (22), take out the snap ring (10) and the baffle (11) and push the bowl back through the intermediate body.

Should it be necessary to remove the manual drain assembly, unscrew the drain cock (24) from the insert (23). Then unscrew the retaining ring (20) from the insert, and remove the insert (23) itself.

To service the automatic drain assembly in 12-063 models, first turn the bowl upside down. The spring (13), cover plate (14), strainer (15) and float (16) will drop out. The automatic drain assembly can then be removed by loosening the retaining ring (20). Care should be taken when reassembling to install the gasket (18) on the bottom of the automatic drain assembly (17) before placing it in the bowl. Also, if strainer (15) has a flanged end, the flanged end should be down. The float (16) and the automatic drain assembly (17) are not repairable items.

Inspect each part carefully for wear or damage and clean parts using only clear, warm water or kerosene. Do not attempt to clean the automatic drain or float assembly.

If any parts are worn or damaged replace them.

## PARTS

1. Pipe plug (2 required) ..... 633-01
3. Rod ..... 1224-01
- 4 "O" ring ..... 1026-01
- 5 "O" ring ..... 1524-01
6. Filter element - 25 micron paper ..... 1483-01
- 50 micron sintered bronze (with gaskets #7) ..... 2402-50
8. Louver ..... 2149-01
9. Wing nut ..... 1499-01
10. Snap ring ..... 813-01
11. Baffle ..... 799-03
12. "O" ring ..... 2317-35
15. Strainer (for 12-063 only) ..... 2991-01
16. Float (for 12-063 only) ..... 3003-50
17. Auto-drain assembly (for 12-063 only) ..... 3000-02
18. Gasket ..... 2811-01
19. Bowl
- Trans. for 12-002 (with manual drain assembly) ..... 603-18
- Trans. for 12-063 (bowl only) ..... 603-23
- Metal for 12-002 (with manual drain assembly) ..... 601-03
- Metal for 12-063 (bowl only) ..... 601-16
20. Retainer ..... 2797-01
21. Clamp ring ..... 1484-01
23. Insert (for 12-002 only) ..... 2996-99
24. Drain cock (for 12-002 only) ..... 684-01

### PARTS NOT NORMALLY REPLACED

2. Body
13. Spring (for 12-063 only)
14. Cover plate (for 12-063 only)
22. Intermediate body

## CONVERSION TO AUTOMATIC DRAIN

The manual drain filter can be converted to an automatic drain filter with one of these conversion kits.

| PIPE SIZE        | CONVERSION KIT   |            |              |
|------------------|------------------|------------|--------------|
|                  | TRANSPARENT BOWL | METAL BOWL | WITHOUT BOWL |
| 1/4", 3/8", 1/2" | 3602-01          | —          | 3603-01      |
| 3/4", 1"         | 3600-01          | 3600-02    | 3603-01      |

**C.A. NORGREN CO.**  
LITTLETON, COLORADO • 80120/303.794-2611