

72 Series Modular Components

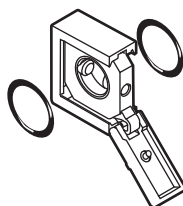
Quikclamp

Maximum Pressure: 17 bar (250 psig)
 Maximum Temperature: 65°C (150°F)

Use with all Excelon 72 Products to provide modular installation capability. Flanges on the products slide into V grooves in the Quikclamp. Two face-sealing o-rings in the Quikclamp provide a positive seal when the clamp is closed and the captive screw is tightened. Tighten screw with a 3 mm hex wrench or a T15 Torx wrench.

Quikclamp Service Kit (contains 2 Nitrile o-rings): 4384-570

A Quikclamp adds 0.26" (6.5 mm) to the overall length of a combination unit.



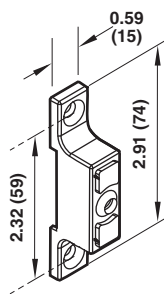
Part

Number: 4214-51

Quikclamp Wall Mounting Bracket

Use with the Quikclamp to provide secure mounting to a wall, machine panel or other flat surface.

Use 3/16" (5 mm) screws to mount bracket to wall.

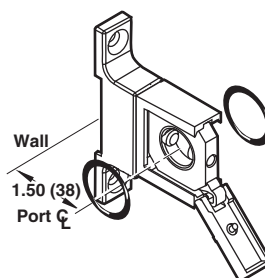


Part Number 4213-89

Quikclamp and Wall Mounting Bracket

See Quikclamp paragraph for descriptions and dimensions.

Use 3/16" (5 mm) screws to mount bracket to wall.



Part Number 4214-52

Sub-base Mounted Pressure Switch

Monitors air pressure and provides an electrical output when the pressure drops below or exceeds an adjustable preset pressure. Installs between two Quikclamps. Also provides two additional 1/4" outlets for auxiliary air.

P₁ max: 250 psig (17 bar)

Temperature: 14° to 150°F
 (-10° to 65°C)

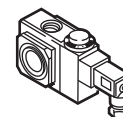
Adjustable 30 to 150 psig (2 to 10 bar). Shipped from factory preset at 90 psig (6.3 bar)

Max. Voltage: 240 V a.c./d.c.

Max. Current: 5 Amp

Hysteresis at Midpoint: 12%

A Sub-base Mounted Pressure Switch adds 1.13" (29 mm) to the overall length of a combination unit.

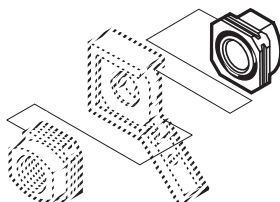


Auxiliary Port

Threads	Part Number
1/4" PTF	4246-50
1/4" ISO G	4246-52

Quikmount Pipe Adapters

Use with the Quikclamp to provide threaded connections to the system piping.



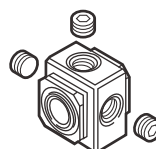
A pipe adapter adds 0.63" (16 mm) to the overall length of a combination unit.

Port Size and Thread	Part No. (Quantity of 1)
1/4" PTF	4215-02
3/8" PTF	4215-03
1/4" ISO R _c	4215-05
3/8" ISO R _c	4215-06
1/4" ISO G	4215-08
3/8" ISO G	4215-09

Porting Block

Installs between two Quikclamps to provide three additional 1/4" outlets for auxiliary air.

A Porting Block adds 1.13" (28.5 mm) to the overall length of a combination unit.

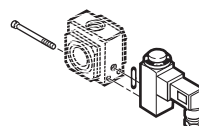


Auxiliary Port

Size & Thread	Part Number
1/4" NPT	4216-50
1/4" ISO R _c	4216-51
1/4" ISO G	4216-52

Replacement Pressure Switch

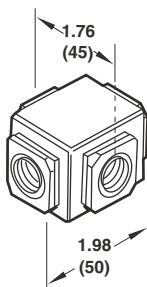
Use only with pressure switch sub-base. Cannot be used with the standard porting block.



Part Number: 4246-01

Manifold Block

Installs with Quikclamps. Ports are threaded 3/8" pipe to provide manifold capability for up to three components.



Side

Port Threads	Part Number
3/8" PTF	4228-01
3/8" ISO R _c	4228-02
3/8" ISO G	4228-03

Transition Connector

Enables connection of Excelon 72 to 74 units. Typically this will allow F74C/H high grade coalescing filters to be flow matched with R72 regulators.

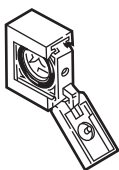


Part Number: 4417-01

73 and 74 Series Modular Components

Quikclamp

Use with all 73 and 74 Series Products to provide modular installation capability. Flanges on the products slide into V grooves in the Quikclamp. Two face-sealing o-rings in the Quikclamp provide a positive seal when the clamp is closed and the captive screw is tightened. A Quikclamp adds 0.54" (13.6 mm) to the overall length of a combination unit. Tighten screw with a 5/32" (4 mm) hex or T25 Torx wrench. (30 in. lbs. Torque)



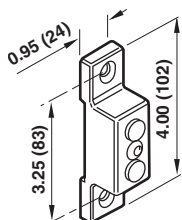
Material:

Zinc

Quikclamp part number: 4314-51
O-ring kit part number: 4384-770

Quikclamp Wall Mounting Bracket

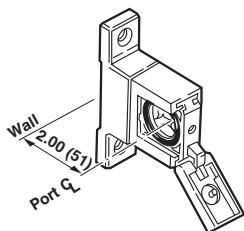
Use with the Quikclamp to provide secure mounting to a wall, machine panel or other flat surface. Use No. 12 (6 mm) screws to mount bracket to wall.



Material: Zinc
Part number: 4313-50

Quikclamp and Wall Mounting Bracket

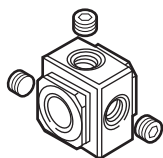
See preceding paragraphs for descriptions and dimensions.



Material: Zinc
Part number: 4314-52
L74 1 quart 4314-55

Porting Block

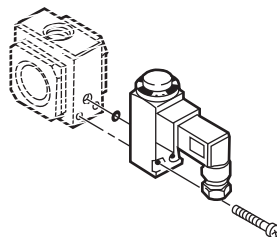
Installs between two Quikclamps to provide three additional 1/4" outlets for auxiliary air. A Porting Block adds 1.30" (33 mm) to the overall length of a combination unit.



Material: Zinc
Part number Auxiliary port size and thread
4316-50 1/4" PTF
4316-51 1/4" ISO Rc
4316-52 1/4" ISO G

Replacement Pressure Switch

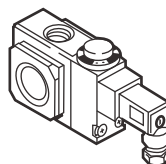
Use only with the pressure switch subbase. Cannot be used with the standard porting block.



Material: Aluminum
Pressure switch part number: 4346-01
Replacement connector: 4346-01R

Subbase Mounted Pressure Switch

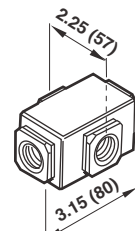
Monitors air pressure and provides an electrical output when the pressure drops below or exceeds an adjustable preset pressure. Installs between two Quikclamps. Also provides three additional 1/4" outlets for auxiliary air. A Subbase Mounted Pressure Switch adds 1.30" (33 mm) to the overall length of a combination unit.



Specifications
Maximum Pressure: 300 psig (20 bar)
Maximum Temperature: 175°F (80°C)
Adjustable Range: 30 to 150 psig (2 to 10 bar)
Shipped from factory preset at 90 psig (6.2 bar).
Maximum Voltage: 240V ac/dc
Maximum Current: 5 Amp
Hysteresis at Midpoint: 12%
Materials: Zinc subbase, Aluminum switch
Auxiliary port thread
Part number
4346-50 1/4" PTF
4346-51 1/4" ISO Rc
4346-52 1/4" ISO G

Manifold Block

Installs with Quikclamps. Ports are threaded 3/4" pipe to provide manifolding capability for up to three components.



Material: Zinc
Part number Side port threads
4328-50 3/4" PTF
4328-53 3/4" ISO G
4328-52 3/4" ISO Rc

Transition Connector

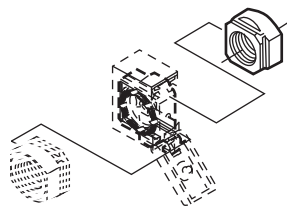
Enables connection of Excelon 72 to 74 units. A transition connector adds 0.06" (1.5mm) to the overall length of a combination unit.



Material: Aluminum
Part Number: 4417-01

Quikmount Pipe Adapters

Use with the Quikclamp to provide threaded connections to the system piping. Each pipe adapter adds 0.71" (18 mm) to the overall length of a combination unit (each kit contains one adapter).



Material: Aluminum
Part number Port size and (Qty thread)
4315-01 1/4" PTF
4315-02 3/8" PTF
4315-03 1/2" PTF
4315-04 3/4" PTF
4315-05 1/4" ISO Rc
4315-06 3/8" ISO Rc
4315-07 1/2" ISO Rc
4315-08 3/4" ISO Rc
4315-09 1/4" ISO G
4315-10 3/8" ISO G
4315-11 1/2" ISO G
4315-12 3/4" ISO G