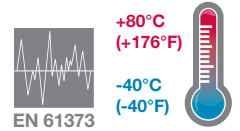
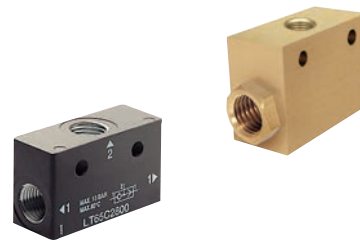


- > Port size: 1/4" (ISO G/NPT)
- > Allow two independent signal sources to be connected to a common pilot line
- > Can be used to perform an 'OR' logic function
- > Can be combined to operate from three or more sources
- > Valves can be ganged together
- > Wide temperature range
- > Shock and vibration resistant to EN 61373, Category 1, class A and B



Technical features

Medium:

Compressed air, filtered, lubricated or non-lubricated, inert gas

Operation:

Shuttle valve ('OR' logic function)

Operating pressure:

0,7 ... 10 bar (10 ... 145 psi)

Port size:

G1/8, G1/4, 1/8 NPT, 1/4 NPT

Mounting:

Line mounted

Ambient/Media temperature:

-40 ... +80°C max. (-40 ... +176°F)
Air supply must be dry enough to avoid ice formation at temperatures below +2°C (+35°F)

Materials:

Body: zinc alloy (1/8"), brass (1/4")
Ball: chrome (1/8") stainless steel (1/4")
Valve seat: brass
Seals: low NBR

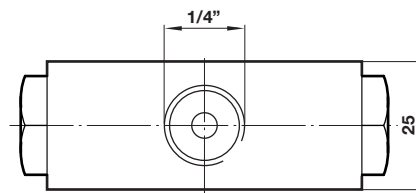
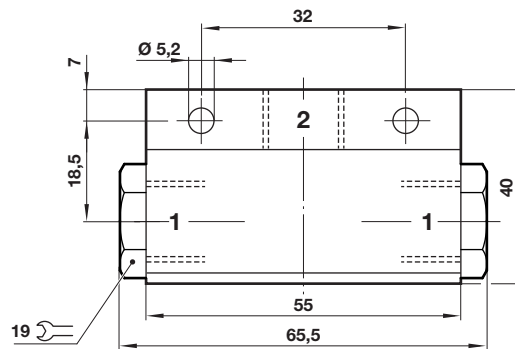
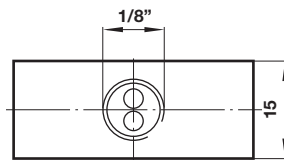
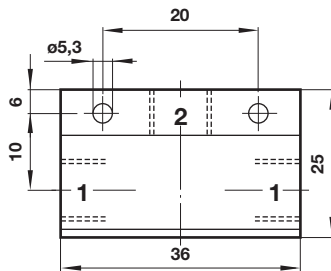
Technical data

Symbol	Port size	Flow factor C *1)	Cv	Kv*2)	Flow at 6 - 1 bar (dm³/min)	Weight (kg)	Model
	G1/8	1,7	0,42	0,36	412	0,05	LT65C1800
	1/8 NPT	1,7	0,42	0,36	412	0,05	LT65A1800
	G1/4	2,6	0,64	0,56	631	0,42	LT65C2800
	1/4 NPT	2,6	0,64	0,56	631	0,42	LT65A2800

*1) Measured in dm³/(s.bar)

*2) Measured in m³/h

Drawing



Dimensions in mm
Projection/First angle



Warning

These products are intended for use in industrial compressed air and rail transport systems only. Do not use these products where pressures and temperatures can exceed those listed under

»Technical features/data«.

Before using these products with fluids other than those specified, for non-industrial applications, life-support systems or other applications not within published specifications, consult IMI NORGREN.

Through misuse, age, or malfunction, components used in fluid power systems can fail in various modes.

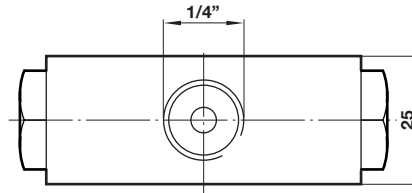
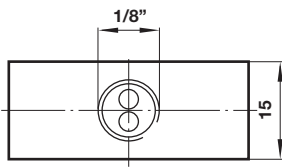
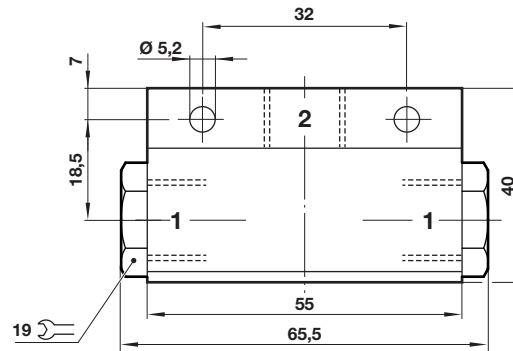
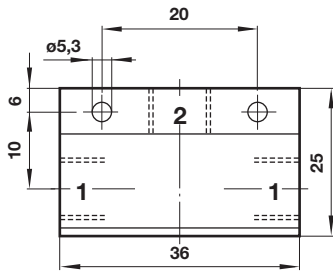
The system designer is warned to consider the failure modes of all component parts used in fluid power systems and to provide adequate safeguards to prevent personal injury or damage to equipment in the event of such failure.

System designers must provide a warning to end users in the system instructional manual if protection against a failure mode cannot be adequately provided.

System designers and end users are cautioned to review specific warnings found in instruction sheets packed and shipped with these products.

Drawing

Dimensions in mm
Projection/First angle



Warning

These products are intended for use in industrial compressed air and rail transport systems only. Do not use these products where pressures and temperatures can exceed those listed under

»Technical features/data«.

Before using these products with fluids other than those specified, for non-industrial applications, life-support systems or other applications not within published specifications, consult IMI NORGREN.

Through misuse, age, or malfunction, components used in fluid power systems can fail in various modes.

The system designer is warned to consider the failure modes of all component parts used in fluid power systems and to provide adequate safeguards to prevent personal injury or damage to equipment in the event of such failure.

System designers must provide a warning to end users in the system instructional manual if protection against a failure mode cannot be adequately provided.

System designers and end users are cautioned to review specific warnings found in instruction sheets packed and shipped with these products.