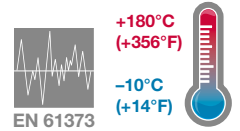


- > **Port size:**
DN 25, G1
- > **Easy rebuilding into**
»normally open«
or »double-acting«
without tools
- > **Optical position**
indicator is standard
- > **Damped closing**
(Valves closes against
flow direction)
- > **Suitable for**
contaminated flow fluid
- > **Suitable for vacuum**
up to max. 90%
- > **Reversed flow**
direction optional
- > **High flow rate**
- > **Option pressure**
actuated by external
liquid fluid
- > **Shock and vibration**
tested to EN 61373,
Category 1, class B



Technical features

Medium:
Neutral gases and liquids

Pilot fluid:
Neutral gases max. +60°C (+14°F)

Switching function:
Normally closed

Operation:
Pressure actuated by external fluid

Mounting position:
Optional

Flow direction:
Determined

Port size:
G1, DN 25

Pilot connection:
G1/4

Operating pressure:
0 ... 10 bar (0 ... 145 psi)

Pilot pressure:
3,5 ... 10 bar (51 ... 145 psi)

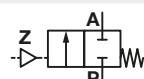
Fluid temperature:
-10 ... +180°C (+14 ... +356°F)

Ambient temperature:
-10 ... +60°C (+14 ... +140°F)

Material:
Process fluid characteristics:
Body: Dezincification Brass (CW617N)
Seat seal: PTFE
Internal parts: Brass, Stainless steel
Spindle sealing: PTFE / FPM, self-adjustable

Pilot fluid characteristics:
Body: Polyamid 66 with glass fibre 30%
Seat Seals: NBR
Internal parts: Brass, Stainless steel

Technical data

Symbol	Port size	Orifice (mm)	Flow kv value *1 (m³/h)	Operating pressure *2 (bar)	Weight *3 (kg)	Model *3
	G1	25	14	0 ... 10	1,8	8450400.0000.00000

*1) Cv-value (US) ≈ kv value x 1,2

*2) For gases and liquid fluids up to 600 mm²/s (cSt)

*3) Without pilot valve

⊗-Note:

For hazardous areas, e. g. Zone 1/2 or 21/22, the kit 1264287 is required.

It contains an additional sign, a silencer as dust shield and a conformity explanation.

The maximum fluid temperature is reduced to 85°C.

Notes

for 3/2-way pilot valve 8495236.9784

Material	Body Brass
Pilot fluid temperature	max. +60°C
Pilot pressure	0 ... 10 bar
Standard voltages	24 V d.c., 110 V a.c.

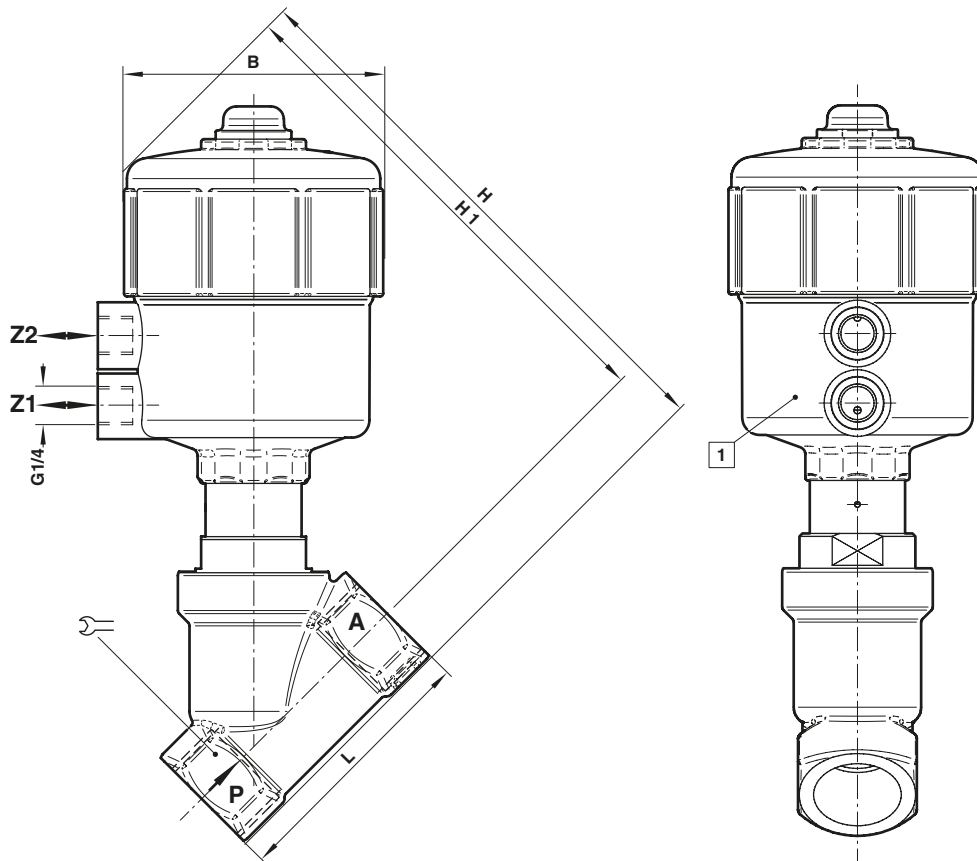
Electrical Data

for 3/2-way pilot valve 8495236.9784


Voltage range	±30%
Duty cycle	100% ED
Protection class	EN 60529 IP65 with mounted socket
Socket	Form A acc. to DIN EN 175301-803 (included)

Further versions on request!

Dimensions

 Dimensions in mm
 Projection/First angle


1 Actuator may be rotated 360°

Port size R	ø B	H	H1	L		Model
G1	89,5	191	174	90	41	8450400.0000.00000

Note to Pressure Equipment Directive (PED):

The valves of this series, including the connection size DN 25 (G1), are according to Art. 4 § 3 of the Pressure Equipment Directive (PED) 2014/68/EU. This means interpretation and production are in accordance to engineers practice wellknown in the member countries. The CE-sign at the valve refers not to the PED. Thus the declaration of conformity is not longer applicable for this directive.

For valves > DN 25 (G1) Art. 3 § (1) No.1.4 applies:

The basic requirements of the Enclosure I of the PED must be fulfilled. The CE-sign at the valve includes the PED. A certificate of conformity of this directive will be available on request.

Note to Electromagnetic Compatibility Guideline (EMC):

The valves shall be provided with an electrical circuit which ensures the limits of the harmonised standards EN 61000-6-3 and EN 61000-6-1 are observed, and hence the requirements of the Electromagnetic Compatibility Guideline 2014/30/EU satisfied.