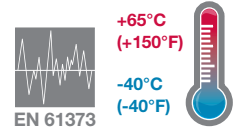


- > **Port size: 1/4" or 3/8" (ISO G/PTF)**
- > **Wide temperature range**
- > **Excelon design allows in-line installation or modular installation with other Excelon products**
- > **Shock and vibration tested to EN 61373, Category 1, class A and B**
- > **Quick release bayonet bowl**
- > **Prismatic liquid level indicator lens**



**Technical features**

**Medium:**

Compressed air only

**Maximum operating pressure:**

17 bar (250 psi)

**Filter element:**

5 or 40 µm

**Port size:**

G1/4, G3/8, 1/4" or 3/8" PTF

**Flow:**

See table below

**Drain:**

Manual

**Ambient/Media temperature:**

-40 ... +65°C (-40 ... +149°F)

Air supply must be dry enough to avoid ice formation at temperatures below +2°C (+35°F).

**Materials:**

Body and bowl: die cast zinc  
Liquid level indicator lens: transparent PA  
Filter element: sintered PP  
Elastomers: CR & NBR

**Technical data - standard models**

Symbol	Port size	Size	Flow* dm³/s	scfm	Filter element (µm)	Weight (kg)	(lbs)	Model
	G1/4	Basic	28	64	40	0,56	1.23	LF72G-2GN-ME3
	1/4 PTF	—	28	64	40	0,56	1.23	LF72G-2AN-ME3
	G3/8	—	28	64	40	0,56	1.23	LF72G-3GN-ME3
	3/8 PTF	—	28	64	40	0,56	1.23	LF72G-3AN-ME3
	G1/4	Basic	28	64	5	0,56	1.23	LF72G-2GN-ME1
	1/4 PTF	—	28	64	5	0,56	1.23	LF72G-2AN-ME1
	G3/8	—	28	64	5	0,56	1.23	LF72G-3GN-ME1
	3/8 PTF	—	28	64	5	0,56	1.23	LF72G-3AN-ME1

\* Typical flow at 6,3 bar (90 psi) inlet pressure, 40 µm element and 0,5 bar (7 psi) pressure drop.

**Option selector**

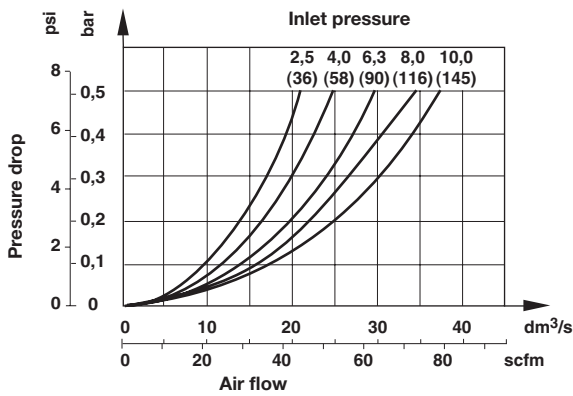
**LF72G-★★N-ME★**

Port size	Substitute
1/4"	<b>2</b>
3/8"	<b>3</b>
Thread form	Substitute
PTF	<b>A</b>
ISO G parallel	<b>G</b>

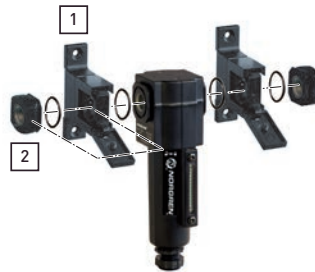
Filter element	Substitute
5 µm	<b>1</b>
40 µm	<b>3</b>

**Flow characteristics**

Element: 40 µm  
 Port size: 1/4"



**Accessories**



**Accessories**

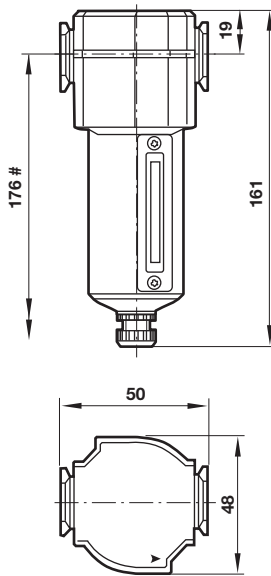
Quikclamp®	Quikclamp with wall bracket® *1)	Quikmount pipe adaptor
Page 3	1 Page 3	2 Page 3
4214-58	4214-57	G1/4: 4215-08 G3/8: 4215-09 1/4 PTF: 4215-02 3/8 PTF: 4215-03

**Service kits**

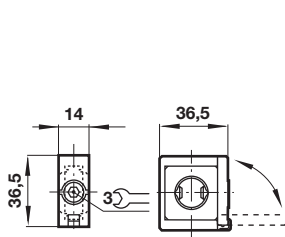
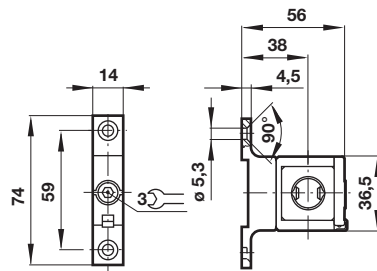
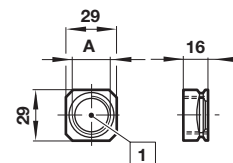
Service kit	Replacement element
4380-502	5925-02 (40 µm) 5925-03 (5 µm)

\*1) Please use a Quikmount pipe adaptor if the Quikclamp be mounted at inlet or outlet side.

**Drawings**

 Dimensions in mm  
 Projection/First angle


# Minimum clearance required to remove bowl

**Accessories**
**Quikclamp®**

**Quikclamp® with wall bracket**

**Pipe adapter**

 1 Main ports 1/4" or 3/8"  
 ISO G/PTF

**Warning**

These products are intended for use in industrial compressed air and rail transport systems only. Do not use these products where pressures and temperatures can exceed those listed under

**»Technical features/data«.**

Before using these products with fluids other than those specified, for non-industrial applications, life-support systems or other applications not within published specifications, consult IMI NORGREN.

Through misuse, age, or malfunction, components used in fluid power systems can fail in various modes.

The system designer is warned to consider the failure modes of all component parts used in fluid power systems and to provide adequate safeguards to prevent personal injury or damage to equipment in the event of such failure.

System designers must provide a warning to end users in the system instructional manual if protection against a failure mode cannot be adequately provided.

System designers and end users are cautioned to review specific warnings found in instruction sheets packed and shipped with these products.