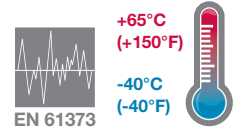


- > Port size: 1/4" or 3/8" (ISO G/PTF)
- > Excelon design allows in-line installation or modular installation with other Excelon products
- > High efficiency water and particle removal
- > Quick release bayonet bowl
- > Push to lock adjusting knob with tamper resistant accessory
- > Prismatic liquid level indicator lens
- > Wide temperature range
- > Shock and vibration tested to EN 61373, Category 1, class A and B



Technical features

Medium:
Compressed air only
Maximum operating pressure:
17 bar (246 psi)
Pressure range:
0,3 ...10 bar (4 ... 145 psi)
Filter element:
5 ... 40 µm
Port size:
G1/4, G3/8, 1/4 or 3/8 NPT

Gauge port:
Rc 1/8 with ISO G main ports
1/8 PTF with PTF main ports
Flow:
See table below
Relieving:
Standard
Drain:
Manual

Ambient/Media temperature:
-40 ... +65°C (-40 ... +150°F)
Air supply must be dry enough to avoid ice formation at temperatures below +2°C (+35°F).

Materials:
Body: zinc
Bonnet: acetal
Valve: brass & NBR
Metal bowl: zinc
Liquid level indicator lens (metal bowl): transparent PA
Filter element: sintered PP
Elastomers: CR & NBR

Technical data - standard models

Symbol	Port size	Size	Flow* dm³/s	scfm	Pressure range (bar)	Filter element (µm)	Adjustment	Weight (kg)	(lbs)	Model
	G1/4	Basic	38	81	0,3 ... 10	40	Knob	0,36	0,79	LB72G-2GK-ME3-RMN
	1/4 PTF	Basic	38	81	0,3 ... 10	40	Knob	0,36	0,79	LB72G-2AK-ME3-RMN
	G3/8	—	38	81	0,3 ... 10	40	Knob	0,36	0,79	LB72G-3GK-ME3-RMN
	3/8 PTF	—	38	81	0,3 ... 10	40	Knob	0,36	0,79	LB72G-3AK-ME3-RMN
	G1/4	Basic	38	81	0,3 ... 10	5	Knob	0,36	0,79	LB72G-2GK-ME1-RMN
	1/4 PTF	Basic	38	81	0,3 ... 10	5	Knob	0,36	0,79	LB72G-2AK-ME1-RMN
	G3/8	—	38	81	0,3 ... 10	5	Knob	0,36	0,79	LB72G-3GK-ME1-RMN
	3/8 PTF	—	38	81	0,3 ... 10	5	Knob	0,36	0,79	LB72G-3AK-ME1-RMN

Option selector

LB72G-***-ME*-RMN

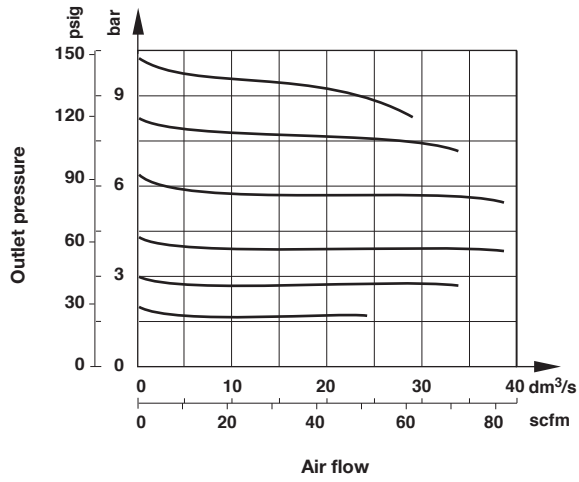
Port size	Substitute
1/4"	2
3/8"	3
Thread form	Substitute
PTF	A
ISO G parallel	G

Element	Substitute
40 µm	3
5 µm	1
Adjustment	Substitute
Knob (standard)	K
T bar	T

Flow characteristics

Inlet pressure: 10 bar (145 psi)

Port size: 1/4", 40 µm element



Accessories



<p>Quikclamp®</p> <p>Page 4</p> <p>4214-58</p>	<p>Quikclamp with wall bracket® *1)</p> <p>1</p> <p>Page 4</p> <p>4214-57</p>	<p>Neck mounting bracket</p> <p>5</p> <p>Page 4</p> <p>74316-51</p>	<p>Panel nut (Aluminium)</p> <p>4</p> <p>4248-01</p>	<p>Tamper resistant kit</p> <p>3</p> <p>4255-51</p>	<p>Quikmount pipe adaptor *1)</p> <p>Page 4</p> <p>G1/4: 4215-08 G3/8: 4215-09 1/4 PTF: 4215-02 3/8 PTF: 4215-03</p>
---	--	--	---	--	--

*1) Please use a Quikmount pipe adaptor if the Quikclamp be mounted at inlet or outlet side.

Service kit

<p>Service kit</p> <p>4381-513</p>	<p>Service kit</p> <p>4380-502</p>	<p>Replacement elements</p> <p>5 µm</p> <p>5925-03</p>	<p>Replacement elements</p> <p>40 µm</p> <p>5925-02</p>
---	---	---	--

Gauge

Center back connection, white face (for full technical specification see datasheet 8.900.900)

6

Pressure range bar *1	Mpa	psi	Ø	Thread size	Model
0 ... 10	0 ... 1	0 ... 145	40 mm	R1/8	18-013-989

*1) primary scale

Center back connection, black face for North America (for full technical specification see datasheet 8.900.900)

6

Pressure range psig *1	bar	Mpa	Ø	Thread size	Model
0 ... 160	0 ... 11	0 ... 1.1	1.5" (40 mm)	1/8 NPT	18-013-212

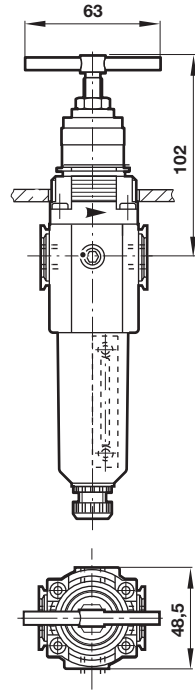
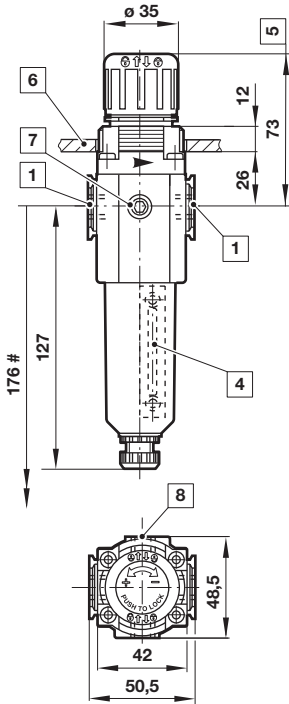
*1) primary scale

Drawings Standard

Dimensions in mm
 Projection/First angle

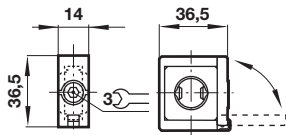


T bar

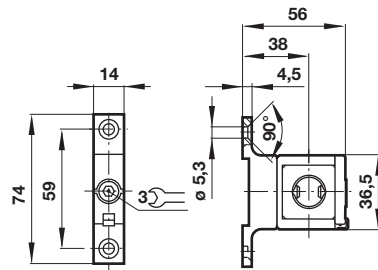


- # Minimum clearance required to remove bowl
- 1 Main ports 1/4" or 3/8"
 - 3 Transparent bowl
 - 4 Metal bowl with liquid indicator
 - 5 Reduces by 4 mm with knob in locked position
 - 6 Panel hole \varnothing 40 mm, Panel thickness 4 max.
 - 7 Gauge port 1/8"
 - 8 Alternative gauge port 1/8" plugged

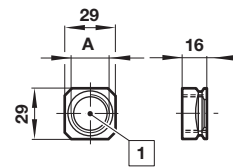
Accessories Quikclamp®



Quikclamp® with wall bracket

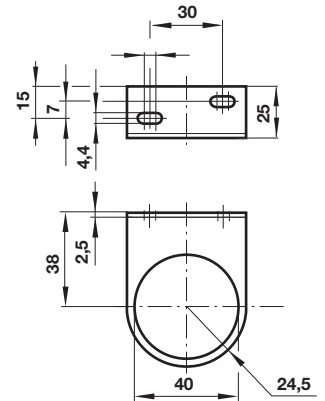


Pipe adapter



- 1 Main ports 1/4" or 3/8" ISO G/PTF

Neck mounting bracket



Warning

These products are intended for use in industrial compressed air and rail transport systems only. Do not use these products where pressures and temperatures can exceed those listed under

»Technical features/data«.

Before using these products with fluids other than those specified, for non-industrial applications, life-support systems or other applications not within published specifications, consult IMI Precision Engineering, Norgren Inc.

Through misuse, age, or malfunction, components used in fluid power systems can fail in various modes.

The system designer is warned to consider the failure modes of all component parts used in fluid power systems and to provide adequate safeguards to prevent personal injury or damage to equipment in the event of such failure.

System designers must provide a warning to end users in the system instructional manual if protection against a failure mode cannot be adequately provided.

System designers and end users are cautioned to review specific warnings found in instruction sheets packed and shipped with these products.