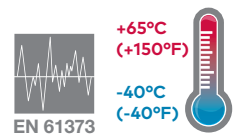


LV72G - EXCELON® Modular System Pressure relief valves

- Port size: 1/4" or 3/8" (ISO G/PTF)
- Excelon design allows in-line installation or modular installation with other Excelon products
- Push to lock adjusting knob with tamper resistant accessory
- Helps protect air operated equipment from over pressurisation
- Wide temperature range
- Shock and vibration tested to EN 61373, Category 1, class A and B



Technical features

Medium:

Compressed air only

Maximum operating pressure:

10 bar (145 psi)

Relief pressure adjustment range:

0.3 ... 10 bar (4 ... 145 psi)

Port size:

G1/4, G3/8, 1/4" or 3/8" NPT
Rc1/4 (Relief port)

Gauge port:

Rc 1/8 with ISO G main ports
1/8 PTF with PTF main ports

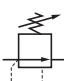
Ambient/Media temperature:

-40 ... +65°C (-40 ... +150°F)
Air supply must be dry enough to avoid ice formation at temperatures below +2°C (+35°F).

Materials:

Body: zinc
Bonnet: acetal
Valve: brass
Elastomers: NBR
Bottom plug: acetal

Technical data - standard models

Symbol	Port size	Size	Pressure range (bar)	Weight (kg)	(lbs)	Model
	G1/4	Basic	0,3 ... 10	0,33	0,72	LV72G-2GK-NMN
	1/4 PTF	Basic	0,3 ... 10	0,33	0,72	LV72G-2AK-NMN
	G3/8	—	0,3 ... 10	0,33	0,72	LV72G-3GK-NMN
	3/8 PTF	—	0,3 ... 10	0,33	0,72	LV72G-3AK-NMN

Option selector

Port size	Substitute
1/4"	2
3/8"	3

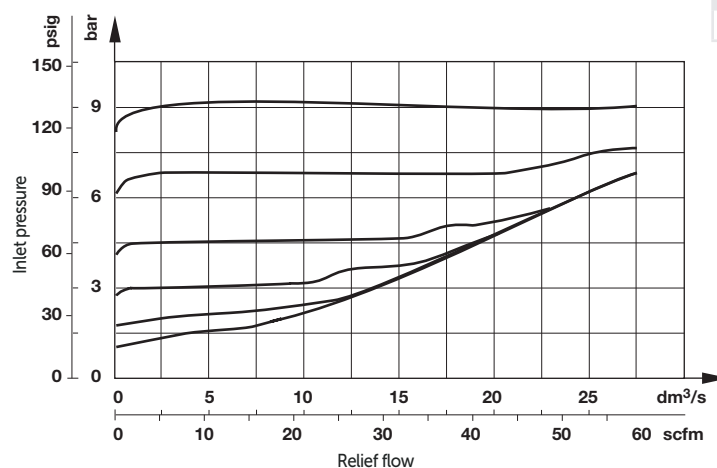
LV72G-★-★-★-NMN

Adjustment	Substitute
Knob (standard)	K
T-bar	T
Thread form	Substitute
PTF	A
ISO G parallel	G

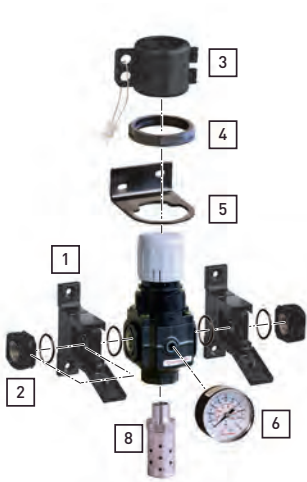
Flow characteristics

Inlet pressure: 10 bar (145 psi)

Port size: 1/4"



Accessories



Quikclamp®  Page 3 4214-58	Quikclamp with wall bracket *1)  1 Page 3 4214-57	Neck mounting bracket  5 Page 3 74316-51	Panel nut (Aluminium)  4 4248-01	Tamper resistant kit  3 4255-51	Quikmount pipe adaptor *1)  Page 3 G1/4: 4215-08 G3/8: 4215-09 1/4 PTF: 4215-02 3/8 PTF: 4215-03	Silencer  8 Page 3 MB002B (Rc 1/4) MB002A (1/4 NPT)
---	--	---	--	--	---	---

*1) Please use a Quikmount pipe adaptor if the Quikclamp be mounted at inlet or outlet side.

Gauge

Center back connection, white face (for full technical specification see datasheet 8.900.900) 6 Pressure range bar *1 Mpa psi Ø Thread size Model					
0 ... 10	0 ... 1	0 ... 145	40 mm	R1/8	18-013-989

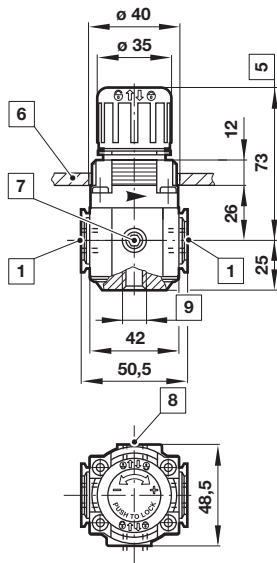
*1) primary scale

Center back connection, black face for North America (for full technical specification see datasheet 8.900.900) 6 Pressure range psig *1 bar Mpa Ø Thread size Model					
0 ... 160	0 ... 11	0 ... 1.1	1.5" (40 mm)	1/8 NPT	18-013-212

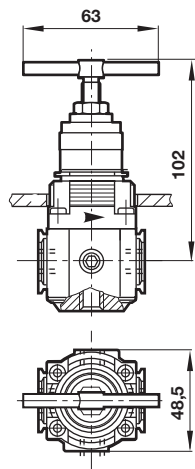
*1) primary scale

Drawings

Standard



T-bar



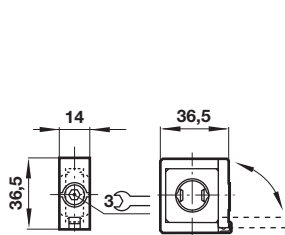
- 1 Main ports 1/4" or 3/8"
- 5 Reduces by 4 mm with knob in locked position
- 6 Panel thickness 0 ... 4 mm
- 7 Gauge port 1/8" plugged
- 8 Alternative gauge port 1/8" plugged
- 9 Exhaust port 1/4"

Dimensions in mm
Projection/First angle

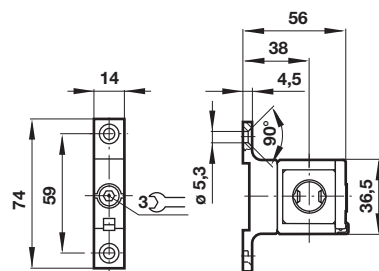


Accessories

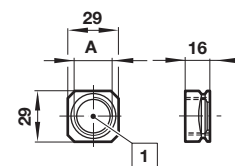
Quikclamp®



Quikclamp® with wall bracket

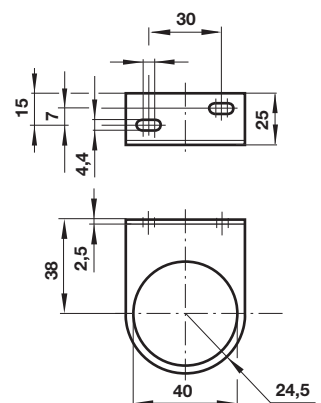


Pipe adapter



- 1 Main ports 1/4" or 3/8" ISO G/PTF

Neck mounting bracket



Warning

These products are intended for use in industrial compressed air and rail transport systems only. Do not use these products where pressures and temperatures can exceed those listed under

»Technical features/data«.

Before using these products with fluids other than those specified, for non-industrial applications, life-support systems or other applications not within published specifications, consult IMI NORGREN.

Through misuse, age, or malfunction, components used in fluid power systems can fail in various modes.

The system designer is warned to consider the failure modes of all component parts used in fluid power systems and to provide adequate safeguards to prevent personal injury or damage to equipment in the event of such failure.

System designers must provide a warning to end users in the system instructional manual if protection against a failure mode cannot be adequately provided.

System designers and end users are cautioned to review specific warnings found in instruction sheets packed and shipped with these products.