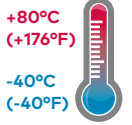


## LB64G - Olympian Plus plug-in system Filter/regulator

- Port size: 1/4" ... 3/4" (ISO G/PTF)
- High efficiency water removal
- Diaphragm and balanced valve design ensure good regulation characteristics
- Non-rising adjusting knob has snap-action lock
- Quick release bayonet bowl
- Wide temperature range
- Shock and vibration tested to EN 61373, Category 1, class A and B



### Technical features

**Medium:**  
Compressed air only

**Maximum operating pressure:**  
**17 bar (246 psi)**  
**Pressure range:**  
0,3 ... 10 bar (4 ... 145 psi)  
Other pressure ranges are available contact Norgren

**Filter element:**  
5 or 40 µm


**Port sizes:**  
1/4", 3/8", 1/2" or 3/4"

**Gauge port:**  
1/8 PTF with PTF main ports  
Rc1/8 with ISO G main ports

**Drain:**  
Manual (standard)  
Optional: automatic

**Relieving:**  
With

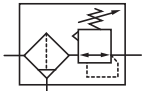
**Bowl size:**  
0,2 litre (7 fluid oz)

**Standard compliances:**  
 II 2G Ex h IIC T6 Gb  
II 2D Ex h IIIC T85° Db

**Ambient/Media temperature:**  
-40° ... +80°C (-40° ... +176°F)  
Air supply must be dry enough to avoid ice formation at temperatures below +2°C (+35°F).

**Materials:**  
Body and yoke: Zinc alloy  
Connection piece: Aluminium  
Metal bowl: Aluminium  
Prismatic liquid level indicator: Grilamid  
Filter element: Sintered plastic  
Adjusting knob: Acetal resin  
Elastomers: Synthetic rubber

### Technical data - standard models

Symbol	Port size	Size	Flow* dm <sup>3</sup> /s	scfm	Filter element (µm)	Weight (kg)	(lbs)	Model ISO G thread	PTF thread
	1/4"	—	30	64	40	1,71	3,76	LB64G-2GK-MD3-RMN	LB64G-2AK-MD3-RMN
	3/8"	—	76	161	40	1,69	3,72	LB64G-3GK-MD3-RMN	LB64G-3AK-MD3-RMN
	1/2"	Basic	106	225	40	1,66	3,65	LB64G-4GK-MD3-RMN	LB64G-4AK-MD3-RMN
	3/4"	—	106	225	40	2,02	4,45	LB64G-6GK-MD3-RMN	LB64G-6AK-MD3-RMN
	Without yoke	—	—	—	40	—	—	LB64G-NNK-MD3-RMN	LB64G-NNK-MD3-RMN
	1/4"	—	30	64	5	1,71	3,76	LB64G-2GK-MD1-RMN	LB64G-2AK-MD1-RMN
	3/8"	—	76	161	5	1,69	3,72	LB64G-3GK-MD1-RMN	LB64G-3AK-MD1-RMN
	1/2"	Basic	106	225	5	1,66	3,65	LB64G-4GK-MD1-RMN	LB64G-4AK-MD1-RMN
	3/4"	—	106	225	5	2,02	4,45	LB64G-6GK-MD1-RMN	LB64G-6AK-MD1-RMN
	Without yoke	—	—	—	5	—	—	LB64G-NNK-MD1-RMN	LB64G-NNK-MD1-RMN

\* Typical flow at 10 bar (145 psi) inlet pressure 6,3 bar (90 psi) set, 40 µm element and 1 bar (15 psi) pressure drop.

### Option selector

#### LB64G-★ ★ K-★ ★ ★ -RMN

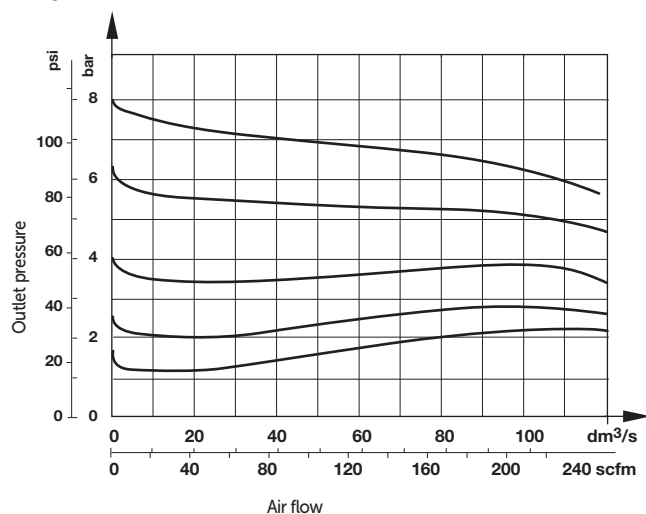
Port size	Substitute
1/4"	2
3/8"	3
1/2"	4
3/4"	6
Without yoke	N
Threads form	Substitute
PTF	A
ISO G parallel (standard)	G
Without yoke	N

Filter element	Substitute
5 µm	1
40 µm	3
Bowl	Substitute
With sight glass (standard)	D
Without sight glass	M
Drain	Substitute
Automatic	A *1)
Manual, spindle type (standard)	M

\*1) For temperature range -25 ... 80°C only, shock and vibration, contact Norgren

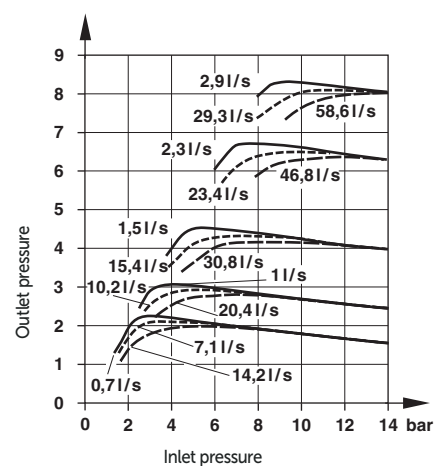
## Flow characteristics

Inlet pressure: 10 bar, port size: 1/2", filter element: 40 µm  
Range: 0,3 ... 10 bar



## Regulating characteristics





Port size: 1/2"



## Accessories, service kit and gauges



## Accessories

	Models with G-thread Single yoke	Double yoke	End connector kit	Rear entry bracket kit
				
Thread	<b>5</b>		<b>2</b>	<b>8</b>
G1/4	Y64A-2GA-N1N	Y64A-2GA-N2N	—	—
G3/8	Y64A-3GA-N1N	Y64A-3GA-N2N	—	—
G1/2	Y64A-4GA-N1N	Y64A-4GA-N2N	74505-50	—
G3/4	Y64A-6GA-N1N*	Y64A-6GA-N2N*	74505-53	18-026-981
1/4 PTF	Y64A-2AA-N1N	Y64A-2AA-N2N	—	—
3/8 PTF	Y64A-3AA-N1N	Y64A-3AA-N2N	—	—
1/2 PTF	Y64A-4AA-N1N	Y64A-4AA-N2N	74505-52	—
3/4 PTF	Y64A-6AA-N1N*	Y64A-6AA-N2N*	74505-55	—


\*These yokes are supplied with two end connector kits as standard.

Bracket mounting	Nut	Tamper resistant cap & seal wire	Yoke connector kit
			
<b>1</b>	<b>4</b>	<b>3</b>	
74504-50	74502-89	4355-51	74503-51


## Service kit

Service kit, manual drain	Service kit, automatic drain
	
LB64G-KITM05R (5 µm)	LB64G-KITA05R (5 µm)
LB64G-KITM40R (40 µm)	LB64G-KITA40R (40 µm)

## Gauges

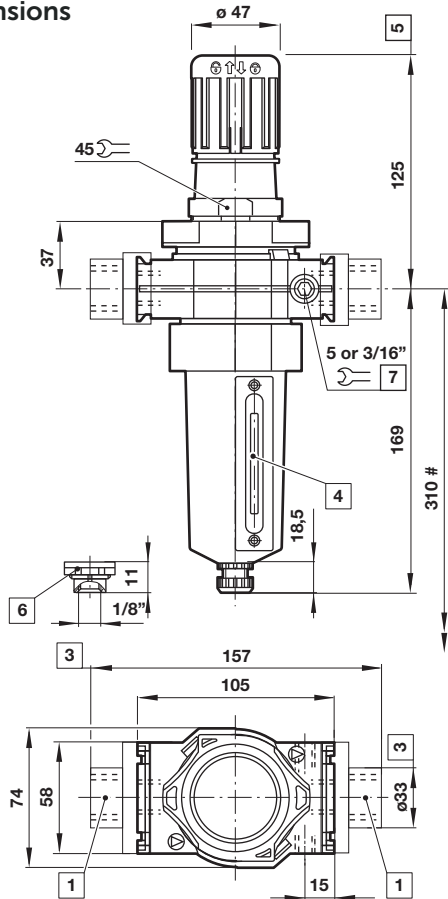
Center back connection, white face (full technical specification see datasheet 8.900.900)				
<b>6</b>				
Pressure range bar *1 MPa psi	Ø	Thread size	Model	
0 ... 10 0 ... 1 0 ... 145	50 mm	R1/8	18-015-013	

\*1) primary scale

Center back connection, black face for North America (full technical specification see datasheet 8.900.900)				
<b>6</b>				
Pressure range psig *1 bar MPa	Ø	Thread size	Model	
0 ... 160 0 ... 11 0 ... 11	1.5" (40 mm)	1/8 NPT	18-015-212	

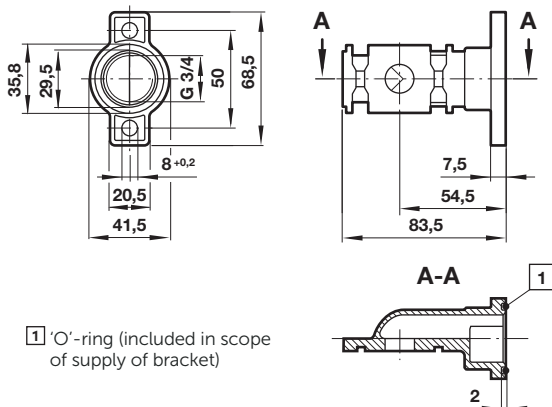
\*1) primary scale

## Basic dimensions



- # Minimum clearance required to remove bowl
- 1 Main ports 1/4", 3/8", 1/2" or 3/4"
  - 3 For main ports 3/4" only
  - 4 Sight glass
  - 5 Reduces by 4 mm with knob in locked position
  - 6 Automatic drain (optional)
  - 7 Gauge port 1/8"

## Rear entry bracket 18-026-981



- 1 'O'-ring (included in scope of supply of bracket)

## Warning

These products are intended for use in industrial compressed air systems only. Do not use these products where pressures and temperatures can exceed those listed under »Technical features/ data«.

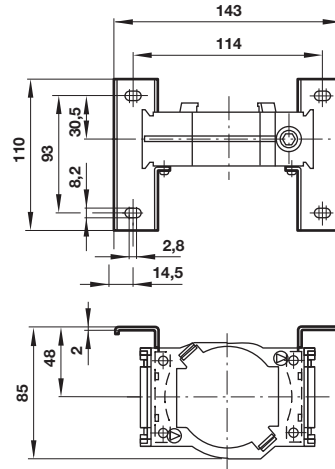
Before using these products with fluids other than those specified, for non-industrial applications, life-support systems or other applications not within published specifications, consult Norgren.

Through misuse, age, or malfunction, components used in fluid power systems can fail in various modes.

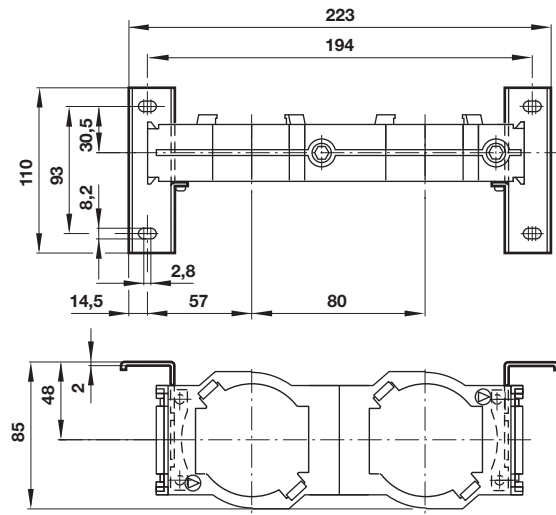
The system designer is warned to consider the failure modes of

## Single yoke with bracket mounting

Dimensions in mm  
Projection/First angle



## Double yoke with bracket mounting



all component parts used in fluid power systems and to provide adequate safeguards to prevent personal injury or damage to equipment in the event of such failure.

System designers must provide a warning to end users in the system instructional manual if protection against a failure mode cannot be adequately provided.

System designers and end users are cautioned to review specific warnings found in instruction sheets packed and shipped with these products.