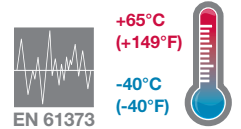


- > Port size: G1/8 & G1/4
- > Very compact unit
- > Full flow gauge ports
- > Low torque, non-rising adjusting knob
- > Snap action knob locks pressure setting when pushed in
- > Standard relieving models allow reduction of outlet pressure even when the system is dead-ended
- > Wide temperature range
- > Shock and vibration tested to EN 61373, Category 1, class A and B



**Technical features**

**Medium:**  
Compressed air only  
**Maximum operating pressure:**  
20 bar (290 psi)  
**Pressure range:**  
0,3 ... 10 bar (4 ... 145 psi)  
Other pressure ranges are available contact Norgren

**Flow:**  
see below  
**Main port sizes:**  
1/8" or 1/4"  
**Gauge ports:**  
1/8" PTF with PTF main ports  
1/8" ISO Rc with ISO G main ports

**Ambient/Media temperature:**  
-40° ... +65°C (-40° ... +149°F)  
Air supply must be dry enough to avoid ice formation at temperatures below +2°C (+35°F)

**Materials:**  
Body: Zinc alloy  
Bonnet and knop: Acetal  
Valve: Brass  
Seals: NBR

**Technical data, standard models with relieving**

Symbol	Port size	Pressure range (bar) (psi)		Flow *1) (dm³/s) (scfm)		Weight (kg) (lb)		Model ISO G thread	PTF thread
	1/8"	0,3 ... 10	4 ... 145	6,5	14	0,19	0,41	LR07-100-RNMG	LR07-100-RNMA
	1/4"	0,3 ... 10	4 ... 145	7	15	0,19	0,41	LR07-200-RNMG	LR07-200-RNMA

\*1) Flow at inlet pressure 10 bar (145 psi), outlet pressure 6,3 bar (91 psi) and pressure drop 1 bar (14 psi)

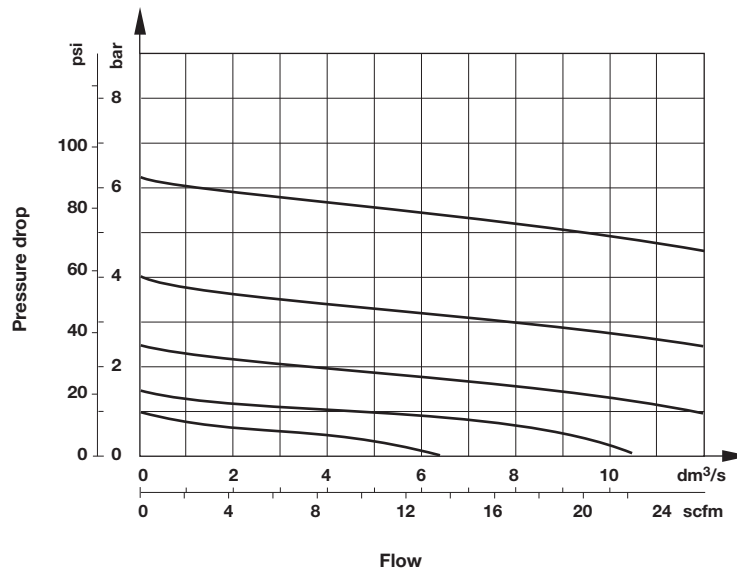
**Option selector**

LR07-★00-RNM★

Port size	Substitute	Thread	Substitute
1/8"	1	PTF	A
1/4"	2	ISO G	G

**Flow characteristics**

**Port size: 1/4"**  
**Inlet pressure: 10 bar (145 psi),**  
**Range: 0,3 ... 7 bar (5 ... 100 psi)**

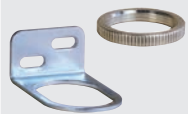


Accessories



Wall mounting bracket and panel nut

Panel nut



1 & 4

4

18-025-004 (with metal nut)

2962-04 (Metal)

Service kit



3407-A2

Gauge

Center back connection, white face (for full technical specification see datasheet 8.900.900)



6

Pressure range bar *1	MPa	psi	Ø	Thread size	Model
0 ... 10	0 ... 1	0 ... 145	40 mm	Rc1/8	18-013-989

\*1) primary scale

Center back connection, black face for North America (for full technical specification see datasheet 8.900.900)

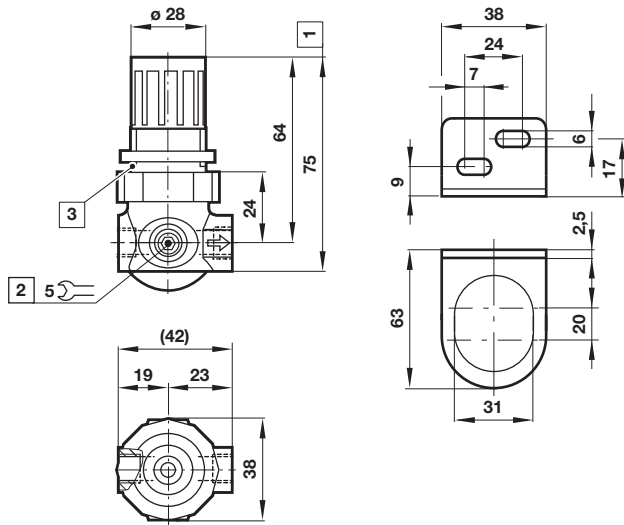


6

Pressure range psig *1	bar	MPa	Ø	Thread size	Model
0 ... 160	0 ... 11	0 ... 1.1	1 1/2"	1/8 NPT	18-013-212

\*1) primary scale

**Dimensions**
**Bracket mounting**

 Dimensions in mm  
 Projection/First angle


1 Panel mounting hole  $\varnothing$  31 mm

**Warning**

These products are intended for use in industrial compressed air and rail transport systems only. Do not use these products where pressures and temperatures can exceed those listed under

**»Technical features/data«.**

Before using these products with fluids other than those specified, for non-industrial applications, life-support systems or other applications not within published specifications, consult IMI NORGREN.

Through misuse, age, or malfunction, components used in fluid power systems can fail in various modes.

The system designer is warned to consider the failure modes of all component parts used in fluid power systems and to provide adequate safeguards to prevent personal injury or damage to equipment in the event of such failure.

System designers must provide a warning to end users in the system instructional manual if protection against a failure mode cannot be adequately provided.

System designers and end users are cautioned to review specific warnings found in instruction sheets packed and shipped with these products.