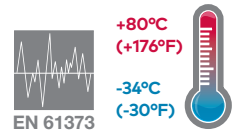


LR17 General purpose regulator

- Port size: 3/4" ... 1 1/2" (ISO G, PTF)
- Accurate and quick response to changes in flow demand and line pressure variations
- Balanced valve minimizes effect of changes in inlet pressure on outlet pressure
- Low torque, non-rising adjusting knob
- Standard relieving models allow reduction of outlet pressure even when the system is dead-ended
- Integral locking device on knob adjustment
- Wide temperature range
- Shock and vibration tested to EN 61373, Category 1, class A and B



Technical features

Medium:
Compressed air

Typical flow:
See below

Relieving:
Standard

Materials:
Body and bonnet: Aluminum
Bottom plug: Acetal
Valve: Aluminum and PA
Elastomers: NBR

Maximum operating pressure:
20 bar (290 psi)

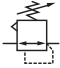
Port size:
3/4", 1", 1 1/4" or 1 1/2"

Ambient/Media temperature:
-34 ... +80°C (-30 ... +176°F)
Air supply must be dry enough to avoid ice formation at temperatures below +2°C (+35°F).

Pressure range:
Standard:
0,3 ... 8,5 bar (4 ... 123 psi)
Optional:
0,3 ... 3,5 bar (4 ... 50 psi)

Gauge ports:
1/4" PTF with PTF main ports
R1/4 with ISO G main ports

Technical data, standard models

Symbol	Port size	Flow* (dm ³ /s)	Pressure range (bar)	Gauge port	Weight (kg)	Model ISO G thread	PTF thread
	G3/4	208	0,3 ... 8,5	Rc1/4	1,05	LR17-600-RNLG	LR17-600-RNLA
	G1	227	0,3 ... 8,5	Rc1/4	0,92	LR17-800-RNLG	LR17-800-RNLA
	G1 1/4	189	0,3 ... 8,5	Rc1/4	1,22	LR17-A00-RNLG	LR17-A00-RNLA
	R1 1/2	208	0,3 ... 8,5	Rc1/4	1,18	LR17-B00-RNLC *1)	LR17-B00-RNLA

* Typical flow with 10 bar (150 psi) inlet pressure, 6,3 bar (90 psi) set pressure and a 1 bar (15 psi) droop from set.

*1) ISO R thread

Option selector

R17-★00-RN★★

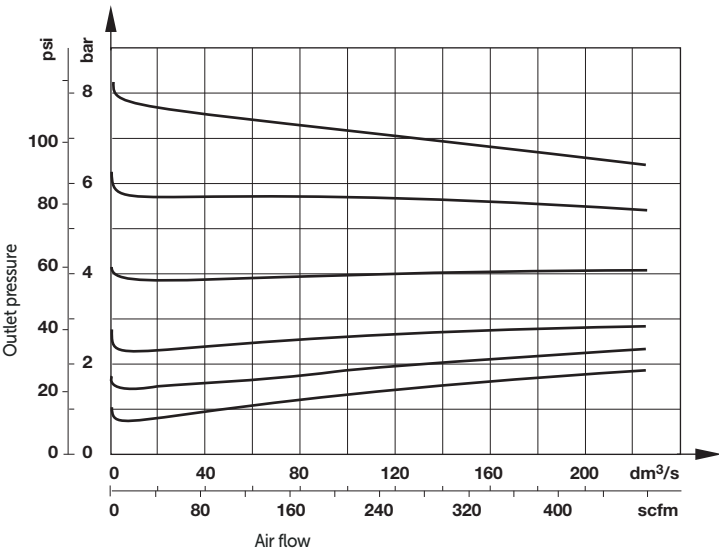
Port size	Substitute
3/4"	6
1"	8
1 1/4"	A
1 1/2"	B

Thread	Substitute
PTF	A
ISO R (1 1/2" ported units only)	C
ISO G parallel (not available with 1 1/2" ported units)	G
Pressure range *	Substitute
0,3 ... 3,5 bar	E
0,3 ... 8,5 bar (standard)	L





* Pressure range can be adjusted to pressures in excess of, and less than, those specified. Do not use these units to control pressures outside of the specified ranges.

Flow characteristics

Port size 1", spring range 0,3 ... 8,5 bar, inlet pressure 10 bar




Accessories

<p>Nut</p>  <p>5226-97 (Metal)</p>	<p>Tamper resistant cap & seal wire</p>  <p>4355-21</p>	<p>Concentric reducing adaptors for gauge ports</p>  <p>R1/4-G1/8 150232818</p>	<p>Service kit</p>  <p>5578-02 Relieving</p>
---	---	--	---


Gauge

Center back connection, white face (for full technical specification see datasheet 8.900.900)



Pressure range			Ø	Thread size	Model
bar *1	MPa	psi			
0 ... 4	0 ... 0,4	0 ... 58	50 mm	R1/8 *2)	18-013-011
0 ... 10	0 ... 1	0 ... 145	50 mm	R1/8 *2)	18-013-013

Center back connection, black face for North America (for full technical specification see datasheet 8.900.900)



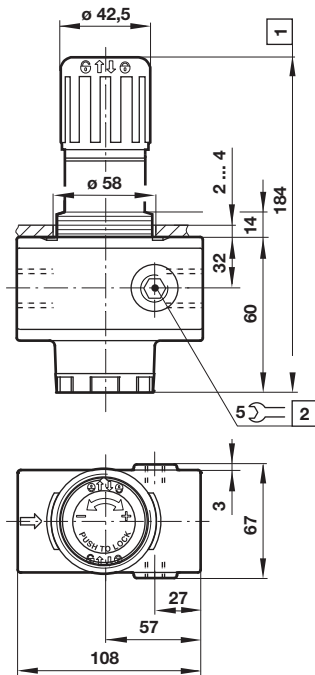
Pressure range			Ø	Thread size	Model
psig *1	bar	MPa			
0 ... 60	0 ... 4	0 ... 0,4	2" (50 mm)	1/4 NPT	18-013-208
0 ... 160	0 ... 11	0 ... 1,1	2" (50 mm)	1/4 NPT	18-013-209

*1) primary scale
*2) Concentric reducing adaptors for gauge ports Model 150232818 (R1/4-G1/8)

*1) primary scale

Dimensions Standard version

Dimensions in mm
Projection/First angle



- 1 Reduces by 4 mm with knob in locked position
- 2 Gauge port 1/4" plugged

Warning

These products are intended for use in industrial compressed air systems only. Do not use these products where pressures and temperatures can exceed those listed under

»Technical features/data«.

Before using these products with fluids other than those specified, for non-industrial applications, life-support systems or other applications not within published specifications, consult Norgren.

Through misuse, age, or malfunction, components used in fluid power systems can fail in various modes.

The system designer is warned to consider the failure modes of all component parts used in fluid power systems and to provide adequate safeguards to prevent personal injury or damage to equipment in the event of such failure.

System designers must provide a warning to end users in the system instructional manual if protection against a failure mode cannot be adequately provided.

System designers and end users are cautioned to review specific warnings found in instruction sheets packed and shipped with these products.