



**3/2 Poppet Valves  
Electrically Actuated  
G1/8**

- Piped exhaust for clean room applications
- Manual operator as standard
- Single and multiple sub-base mounting
- Normally closed and normally open models



#### Technical Data

Medium:

Compressed air, filtered, lubricated and non lubricated

Operation:

Poppet valve, directly actuated with spring return

Mounting:

Through holes in sub-base, threaded on single station

Port size:

G1/4 inlet and exhaust

G1/8 outlet

Flow:

Cv 0,095 normally closed

Cv 0,074 normally open

Operating Temperature

-5°C\* to +55°C supply air

+5°C to +55°C ambient

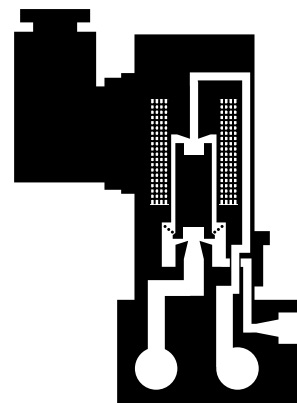
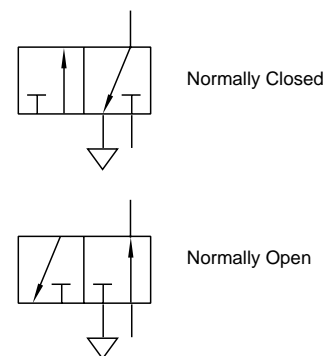
\* Consult our Technical service for use below +2°C

Materials:

Epoxy resin encapsulated coil, zinc alloy valve body, stainless iron armature and stainless steel spring, aluminium base, nitrile rubber seals.

#### Ordering Information

To order, quote model number followed by voltage code shown in the tables overleaf, e.g. M/7600/MCZ24V= for the 24V d.c. model.





### General Information

Symbol	Model	Type	No of stations Manifold models	Operator	Return	Operating Pressure (bar)	Weight (kg)	Spares kit
	M/7600/MCZ*	Normally closed	1	Solenoid	Spring	0-10	0,44	Not available
	DM/7600/MCZ*/T2	Normally closed	2	Solenoid	Spring	0-10	0,88	Not available
	DM/7600/MCZ*/T3	Normally closed	3	Solenoid	Spring	0-10	1,32	Not available
	DM/7600/MCZ*/T4	Normally closed	4	Solenoid	Spring	0-10	1,76	Not available
	DM/7600/MCZ*/T5	Normally closed	5	Solenoid	Spring	0-10	2,20	Not available
	DM/7600/MCZ*/T6	Normally closed	6	Solenoid	Spring	0-10	2,64	Not available
	M/7601/MCZ*	Normally open	1	Solenoid	Spring	0-10	0,44	Not available
	DM/7601/MCZ*/T2	Normally open	2	Solenoid	Spring	0-10	0,88	Not available
	DM/7601/MCZ*/T3	Normally open	3	Solenoid	Spring	0-10	1,32	Not available
	DM/7601/MCZ*/T4	Normally open	4	Solenoid	Spring	0-10	1,76	Not available
	DM/7601/MCZ*/T5	Normally open	5	Solenoid	Spring	0-10	2,20	Not available
	DM/7601/MCZ*/T6	Normally open	6	Solenoid	Spring	0-10	2,64	Not available

\* Insert voltage code, e.g. QM/7600/M/CZZZOVAC for the 220-240V a.c.model.

### Voltage Codes

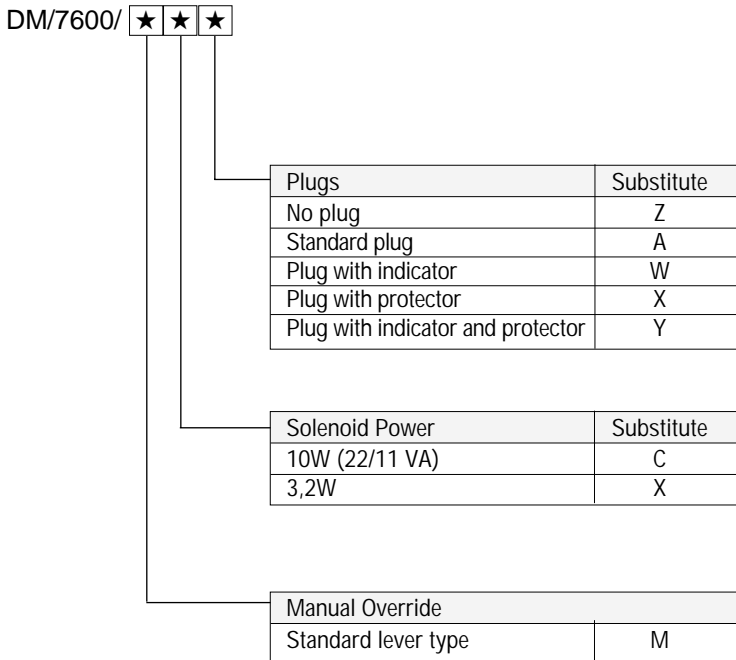
Voltage	Code	Power
12 v d.c.	12V=	10W
24 V d.c.	24V=	10W
24 V d.c. (low power)	24V=	3,2W
24 V 50/60 Hz	24VAC	22/11VA
48 V 50/60 Hz	48VAC	22/11VA
110-120 V 50/60 Hz	110VAC	22/11VA
220-240 V 50/60 Hz	220VAC	22/11VA

### Technical Details

Voltage Tolerance	-15%/+10%
Inrush Hold	d.c. 10W 3,2 W (low power) a.c. 11 VA (Inrush 22 VA) 100% E.D.
Inlet Orifice	2 mm 1,5 mm (low power)
Exhaust Orifice	2 mm
Operating Pressure	0-10 bar
Manual Override	Standard lever type
Typical Response Times	14 ms on 17 ms off
Plugs	A wide variety of plugs are available, see Section 7.7.001



## Model Codes



## Warning

These products are intended for use in industrial compressed air systems only. Do not use these products where *pressures* and *temperatures* can exceed those listed under 'Technical Data'.

Before using these products with fluids other than those specified, for non-industrial applications, life-support systems, or other applications not within published specifications, consult NORGREN.

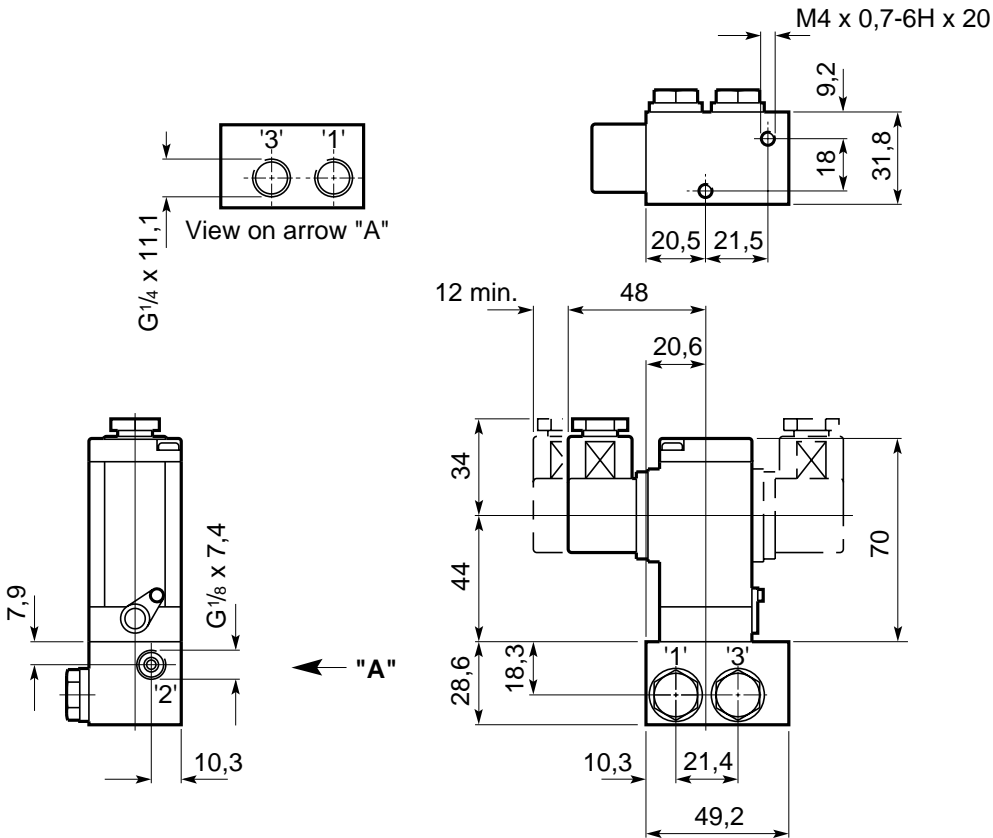
Through misuse, age, or malfunction, components used in fluid power systems can fail in various modes. The system designer is warned to consider the failure modes of all component parts used in fluid power systems and to provide adequate safeguards to prevent personal injury or damage to equipment in the event of such failure.

**System designers must provide a warning to end users in the system instructional manual if protection against a failure mode cannot be adequately provided.**

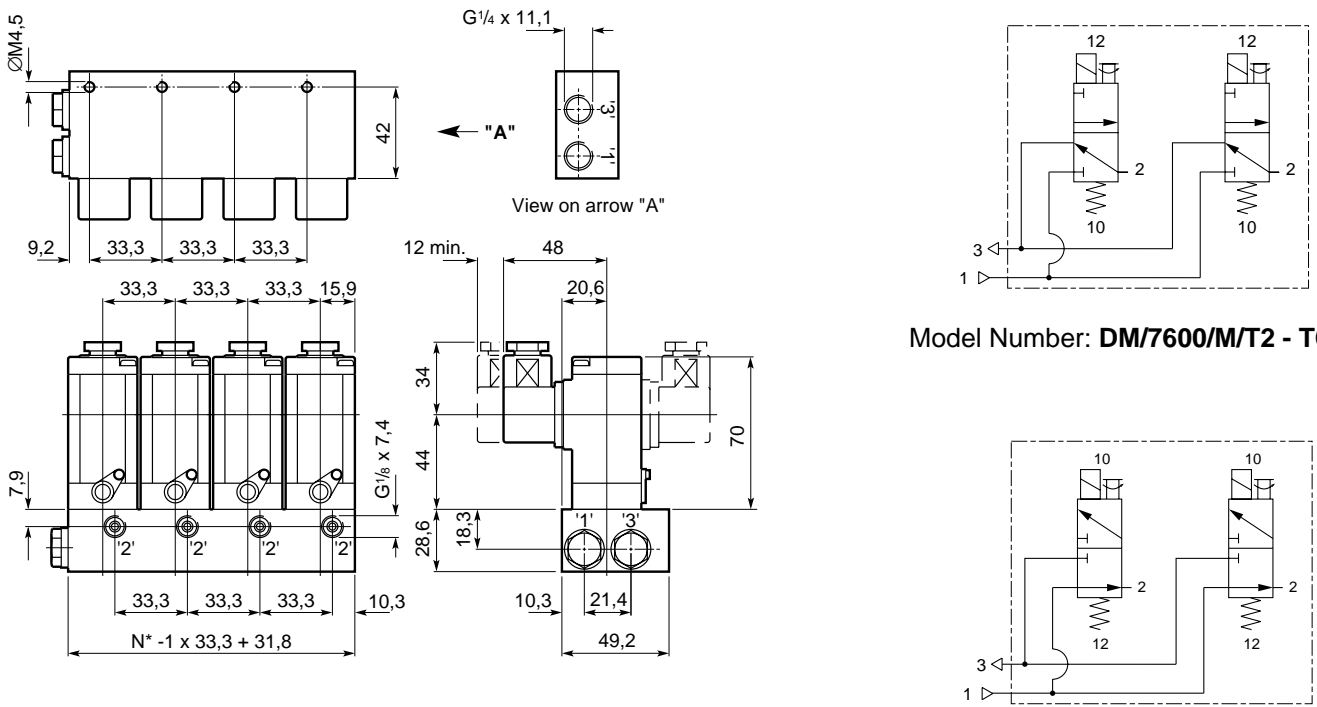
System designers and end users are cautioned to review specific warnings found in instruction sheets packed and shipped with these products.



### M/7600 and M/7601 Models



### DM/7600 and DM/7601 Models



\* = Number of stations

Model Number: **DM/7600/M/T2 - T6**

Model Number: **DM/7601/M/T2 - T6**