

- > 1/4" & 1/2" (G or NPT)
- > Valves can be ganged together
- > Allow two independent signal sources to be connected to a common pilot line
- > Verification according to IEC 61508, multichannel up to SIL 3
- > Can be used to perform an 'OR' logic function



Technical features

Medium:

Filtered, non-lubricated or dry compressed air, instrument air nitrogen and other non-flammable neutral dry fluids

Operating pressure:

1 ... 10 bar (14 ... 145 psi)

Operation:

Shuttle valve ('OR' logic function)

Port size:

G1/4, G 1/2, 1/4 NPT, 1/2 NPT

Ambient/Media temperature:

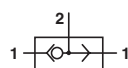
-40 ... +80°C (-40 ... +176°F)

Air supply must be dry enough to avoid ice formation at temperatures below +2°C (+35°F)

Materials:

Housing: Anodized aluminium or stainless steel 1.4404 (316 L)
Inner parts: stainless steel

Technical data

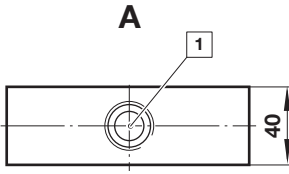
| Symbol | Port size | Flow 1 » 2 *1) (l/min) | Flow 2 » 1 *1) (l/min) | Material | Weight (kg) | Model |
|---|-----------|---------------------------|---------------------------|-----------------|----------------|---------------------------|
|  | G1/4 | 1900 | 2100 | Aluminium | 1,0 | 4060651 + 3 x 0614108 *2) |
| | 1/4 NPT | 1900 | 2100 | Aluminium | 1,0 | 4060651 + 3 x 0614110 *3) |
| | G1/4 | 1900 | 2100 | Stainless steel | 2,5 | 4060653 + 3 x 0614108 *2) |
| | 1/4 NPT | 1900 | 2100 | Stainless steel | 2,5 | 4060653 + 3 x 0614110 *3) |
| | G1/2 | 2050 | 2250 | Aluminium | 1,0 | 4060651 + 3 x 0614107 *2) |
| | 1/2 NPT | 2050 | 2250 | Aluminium | 1,0 | 4060651 |
| | G1/2 | 2050 | 2250 | Stainless steel | 2,5 | 4060653 + 3 x 0614107 *2) |
| | 1/2 NPT | 2050 | 2250 | Stainless steel | 2,5 | 4060653 |

*1) Flow characteristics conforms to ISO6358 [6 » 5 bar]

*2) Order G-Thread G1/2 and G1/4 with adapter.

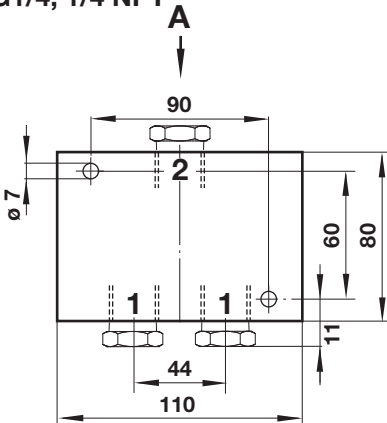
*3) Order NPT 1/4 NPT with adapter.

**Dimensions
Valves**

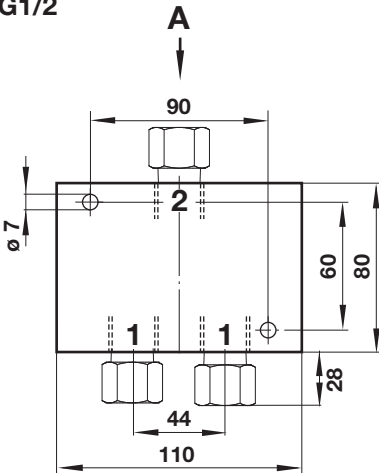


- 1 Port size 1/4 NPT, (1/2 NPT + 3 x Adapter)
- Port size 1/2 NPT,
- Port size G1/4 (1/2 NPT + 3 x Adapter),
- Port size G1/2 (1/2 NPT + 3 x Adapter)

G1/4, 1/4 NPT

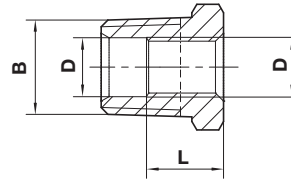
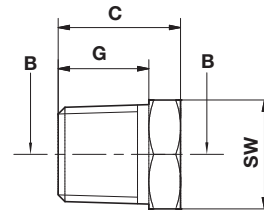


G1/2



Adapter

Dimensions in mm
Projection/First angle



| B | D | C | G | L |  | Weight (g) | Model |
|---------|---------|------|------|------|---|------------|---------|
| 1/2 NPT | G1/4 | 24,0 | 20,0 | 17,0 | 24 | 20 | 0614108 |
| 1/2 NPT | G1/2 | 41,0 | 20,0 | 20,0 | 27 | 20 | 0614107 |
| 1/2 NPT | 1/4 NPT | 27,0 | 20,0 | - | 24 | 20 | 0614110 |

Warning

These products are intended for use in industrial compressed air and fluid systems only. Do not use these products where pressures and temperatures can exceed those listed under »**Technical features/data**«. Before using these products with fluids other than those specified, for non-industrial applications, life-support systems, or other applications not within published specifications, consult IMI Precision Engineering, Norgren GmbH.

Through misuse, age, or malfunction, components used in fluid power systems can fail in various modes. The system designer is warned to consider the failure modes of all component parts used in fluid power systems and to provide adequate safeguards to prevent personal injury or damage to equipment in the event of such failure.

System designers must provide a warning to end users in the system instructional manual if protection against a failure mode cannot be adequately provided.

System designers and end users are cautioned to review specific warnings found in instruction sheets packed and shipped with these products.

Functional safety (SIL):

Suitable for certain applications can only be evaluated through examination of each safety-related overall system with regard to the requirements of IEC 61508/61511.