

- > 3/2 NC
Manifold mounting
- > Compact design
- > In excess of 100 millions cycle rate
- > Low power consumption
- > Certification: ATEX, IECEx



Technical features

Medium:

Air, oxygen, neutral gases (10 % ... 95 % humidity, non condensing), 40 µm filtered

Operation:

Direct acting 3-way valves, normally closed

Operating pressure:

0 ... 8 bar (0 ... 116 psi)

Details see table below

Flow:

9 l/min at 8 bar (116 psi) at +20°C (+68°F)

Mounting:

Manifold

Orifice:

0,6 mm

Response time:

10 ... 15 ms

Response time measured according to ISO 12238

Life expectancy:

≥100 Mio. cycles

Weight:

10,5 g (0.023 lbs)

Ambient/media temperature:

-10 ... +50 °C (+14 ... +122°F)

Air supply must be dry enough to avoid ice formation at temperatures below +2 °C (+35°F).

Materials:

Body: PPS

Seat seals: FPM, NBR

Internal parts: Stainless steel, PAA

Electrical details

Voltage:	12 & 24 V d.c.
Rating:	100 % E.D.
Voltage tolerance:	±10%
Power consumption:	0,5 W
Electrical insulation	500 V a.c.
Protection class	IP65
Insulation class	F (155°C)

Following options on request

Pneumatic configuration
Operating pressure (also vacuum)
Materials
Voltage
Pneumatic port allocation
Power consumption
Coil orientation
Deagreased
Without manual override

Ex-Protection class

II 1 GD (Industrial, Zone 0, Gaz & Dust)
Ex ia IIC T4, T5 ou T6
Ex iaD 20 T85°C, T100°C ou T135°C
INERIS 04ATEX0101X
INERIS 04ATEX0101X/01

Ex-Approvals

2011/65/CE
2004/108/CE
94/9/CE

Technical data - standard models

Symbol	Operating pressure		kv*1)	Power consumption (W)	Voltage (V d.c.)	Manual override	Lead length (mm)	Seal material	Model
	(bar)	(psi)							
	0 ... 8	0 ... 116	0,08	0,5	12	Push only	300	NBR	11-311PI060H0+H110002+AWF
	0 ... 8	0 ... 116	0,08	0,5	24	Push only	300	NBR	11-311PI060H0+H110003+AYJ

*1) Cv = 0,07 kv

Accessories

Mounting plate with barbed fittings for 3 mm ØID tubing (up to 2 bar)



Page 2

S111.1772

Mounting manifold with M3 threads – 1 position



Page 2

S110.1277

Mounting manifold with M5 threads – 1 ... 8 positions



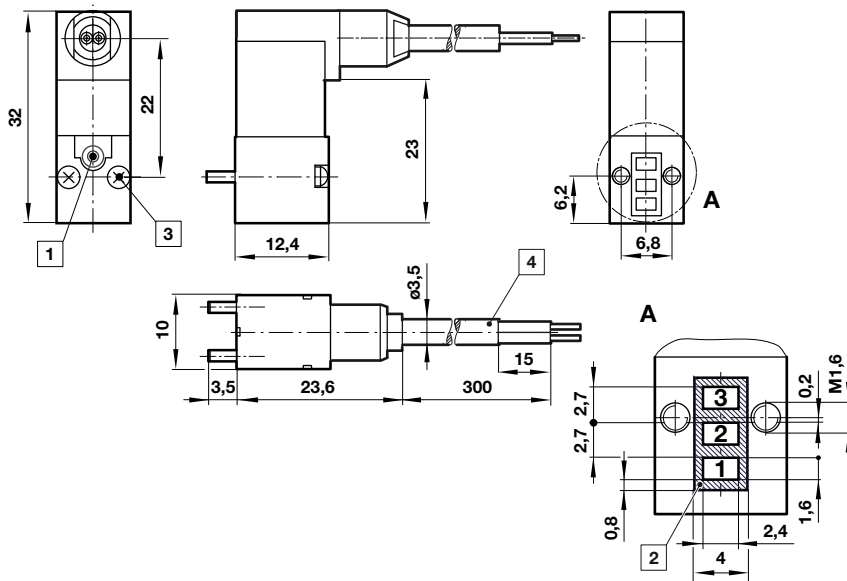
Page 3

Available on request

Dimensions

1

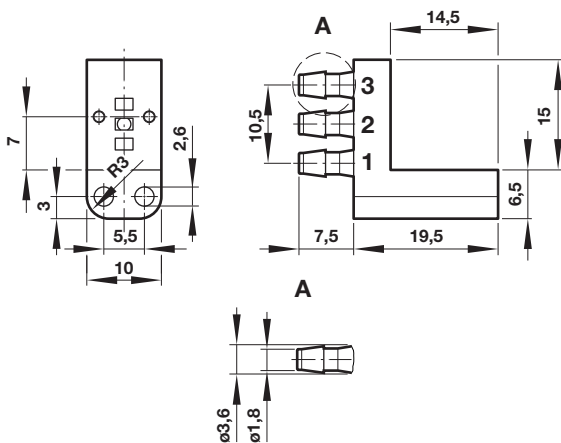
Dimensions shown in mm
Projection/First angle



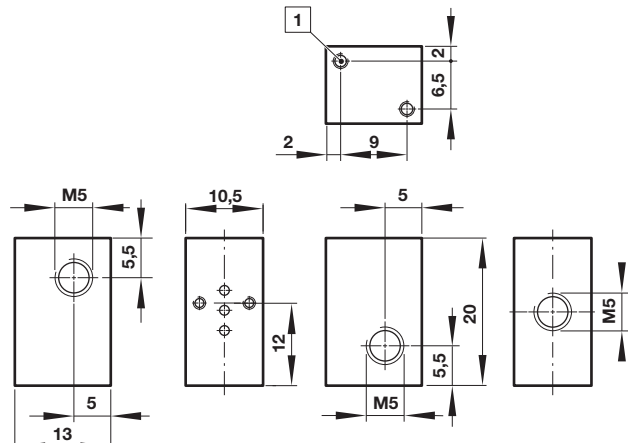
- 1 Manual override, push only
- 2 Sealing area
- 3 The recommended mounting screw tightening torque is 0,15 Nm.
- 4 Connection cable

All solenoid valves are supplied with mounting screws and gasket.

Mounting plate with barbed fittings for
3 mm ØID tubing (up to 2 bar)
Model: S111.1772



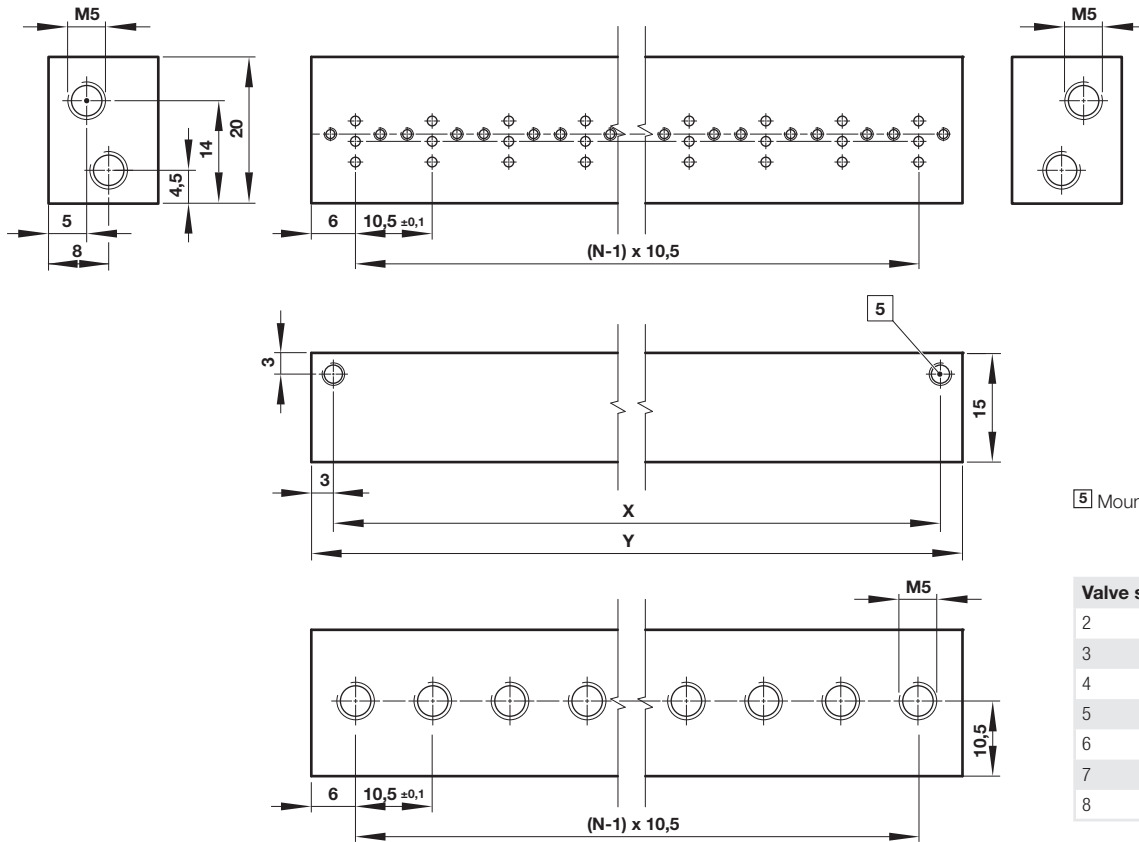
Mounting manifold
Model: S110.1277



1 Mounting thread M2 x 5 deep

Mounting manifold
Model: on request

Dimensions shown in mm
Projection/First angle



5 Mounting thread M3 x 4,5 deep

Valve station	X	Y
2	16,5	22,5
3	27	33
4	37,5	43,5
5	48	54
6	58,5	64,5
7	69	75
8	79,5	85,5

Warning

These products are intended for use in air, oxygen and neutral gas systems only. Do not use these products where pressures and temperatures can exceed those listed under »**Technical features**«.

Before using these products with fluids other than those specified, for non-industrial applications, life-support systems, or other applications not within published specifications, consult IMI FAS.

Through misuse, age, or malfunction, components used in fluid power systems can fail in various modes.

The system designer is warned to consider the failure modes of all component parts used in fluid power systems and to provide adequate safeguards to prevent personal injury or damage to equipment in the event of such failure.

System designers must provide a warning to end users in the system instructional manual if protection against a failure mode cannot be adequately provided.