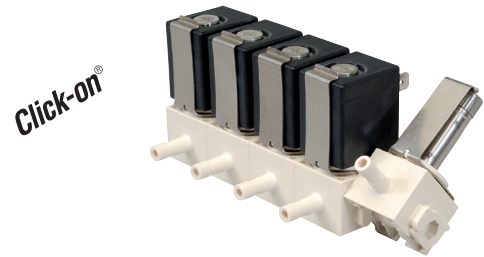


- > **Port size:**
DN 2,2
- > **Solenoid interchangeable without tools (Click-on®)**
- > **Valve operates without differential pressure**
- > **Manifold and easy interlinked**
- > **For the use with standard push in fittings**
- > **Good corrosion resistance**
- > **Increased service life**
- > **low maintenance**
- > **International approvals**



Technical features

Medium:

Neutral gases and liquids

Switching function:

Normally closed

Operation:

Direct solenoid actuated

Mounting position:

Preferably solenoid vertical on top, other positions on request

Flow direction:

Determined

Port size:

Standard (Tube push-in fitting)

Ø 6 mm

(O/D 6 mm, I/D 4 mm)

OD tube tolerance ± 0.1 mm

Operating pressure:

0 ... 16 bar (0 ... 232 psi)

Fluid temperature:

0° ... +125°C (+32° ... +257°F)

Ambient temperature:

0° ... +50°C (+32° ... +122°F)

Materials:

Body: PPSU (Polyphenylsulfon)

Seat seal: EPDM

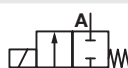
Internal parts: Stainless steel

Components made of PPSU do not come into contact with the following media:

acetone, ether, ketones, aromatic hydrocarbons, chlorinated hydrocarbons, oxidising acids and anaerobic adhesives



Technical data - standard models

Symbol	Port size (mm)	Orifice (mm)	Flow kv value *1 (m³/h)	Operating pressure *2 (bar)	Weight (kg) *3	Model
	6/4	2,2	0,12	0 ... 16	0,10	8590440.9837.xxxxx

xxxxx Please insert voltage and frequency codes

*1) Cv-value (US) ≈ kv value x 1,2

*2) for gases and liquid fluids up to 25 mm²/s (cSt)

*3) Valve only

Option selector

8590***.9837.*****

Orifice (mm)	Substitute
2,2	440

Frequency	Substitute
See table frequency codes	xx
Voltage	Substitute
See Voltage codes	xxx
Options (Solenoids)	Substitute
Voltage 24 V d.c.	9837
DC 11 W	
Voltage range +0% / -5%	
Duty cycle	
50% ED 1 min SD	
Terminals 6,3 x 0,8	
Protection class IP 00	

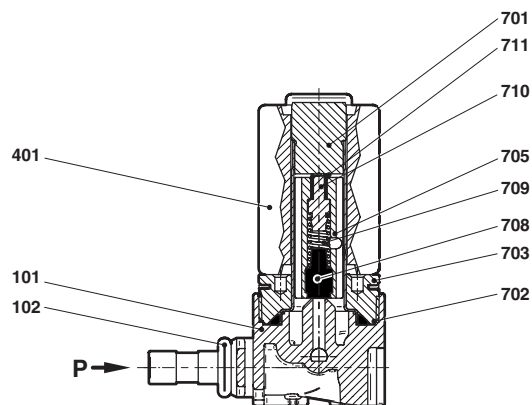
Design acc. to DIN VDE 0580
Further versions on request!

Electrical details for all solenoid systems

According to DIN VDE 0580 at a solenoid temperature of +20°C.
At operating state temperature the input power of a coil decreases by up to ca. 30% due to physical reasons.

Section view

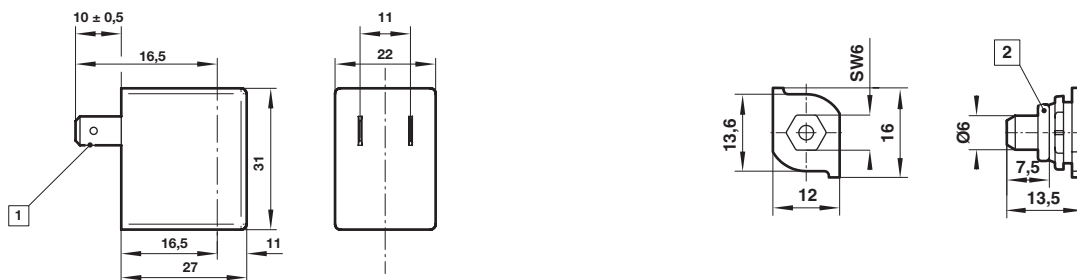
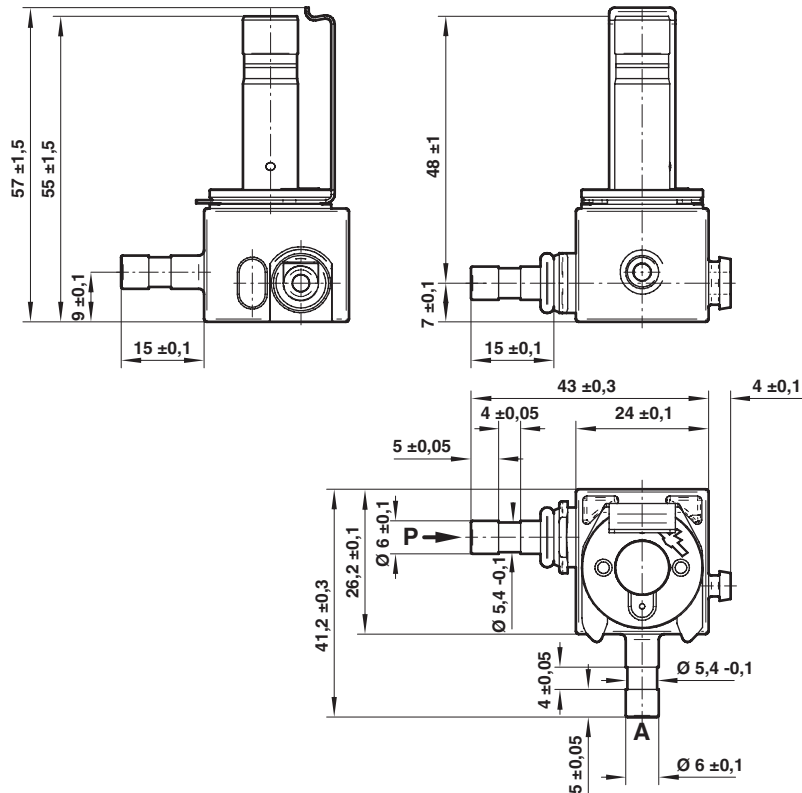
8590440.9837.02400



No.	Description
101	Valve body
102	O-Ring
401	Solenoid
701	Core tube
702	O-Ring
703	Screw piece
705	Plunger
708	Sealing plug
709	Pressure spring
710	Spring bolt
711	Pressure spring

No Spare part orders possible.
For maintenance please state series no. without coil 8590440.9837.00000.

General Dimensions
8590440.9837.02400

 Dimensions in mm
 Projection/First angle

Recommendation:

- Max. 7 valves interlinked
- Please fix interlinked manifold at the beginning and at the end with screw

1 Terminals 6,3 x 0,8 mm

2 Plug (1274624)

 Please use the O-Ring
 (No. 12 734 43) from the first valve
 station or order it separately.

Note to Pressure Equipment Directive (PED):

The valves of this series are according to Art. 4 § 3 of the Pressure Equipment Directive (PED) 2014/68/EU. This means interpretation and production are in accordance to engineers practice wellknown in the member countries. The CE-sign at the valve does not refer to the PED. Thus the declaration of conformity is not longer applicable for this directive.

Note to Electromagnetic Compatibility Guideline (EEC):

The valves shall be provided with an electrical circuit which ensures the limits of the harmonised standards EN 61000-6-3 and EN 61000-6-1 are observed, and hence the requirements of the Electromagnetic Compatibility Guideline (2014/30/EU) satisfied.

Note to EAC marking:

The EAC-marked products comply with the applicable requirements stated in the technical regulations of the Eurasian Economic Union.