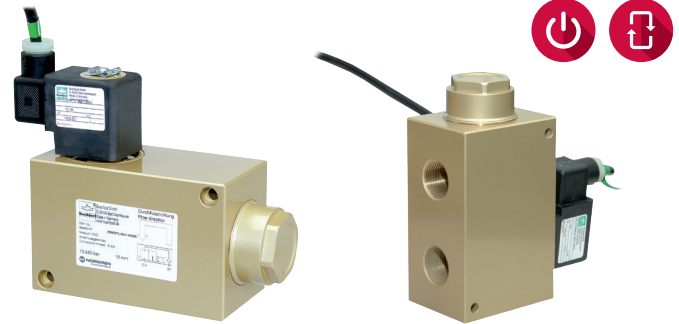


- > Port size: DN15, G3/4
- > High pressure solenoid valves
- > Further customized solutions available upon request



8590372.9841

8590xxxx.9841

Technical features

Medium:

For compressed natural gas (CNG)

Switching function:

Normally closed

Operation:

Indirectly solenoid actuated

Mounting position:

Optional, preferably with filter on the bottom side

Flow direction:

Determined

Port size:

G3/4

Operating pressure:

10 ... 250 bar (145 ... 3625 psi)

Leakage:

 Internal Leakage acc. to DIN EN 12266-1 Leakage "E"
 External Leakage acc. to DIN EN 12266-1 Leakage "A"

Fluid temperature:

 Solenoid 9841:
 -20 ... +60°C (-4 ... +140°F)
 Solenoid 9186:
 -20 ... +60°C (-4 ... +140°F)

Ambient temperature:

 Solenoid 9841:
 -20 ... +50°C (-4 ... +122°F)
 Solenoid 9186:
 -20 ... +40°C (-4 ... +104°F)

Material:

 Body: Brass
 Seat seal: Polymer
 Internal parts: Brass, Stainless steel, Polymer

Technical data - standard models - 40 µm filter included in the inlet port

Port size	Nominal Diameter (mm)	Operating pressure (max. Differential pressure) (bar)	Weight (kg)	Model Solenoid in V d.c./a.c.
G3/4	15	10 ... 250	4,5	8590372.9841.xxxxx

xxxxx Please insert voltage and frequency codes

Technical data - standard models - without filter

Port size	Nominal Diameter (mm)	Operating pressure (max. Differential pressure) (bar)	Weight (kg)	Model Solenoid in V d.c./a.c.
G3/4	15	10 ... 250	4,5	8590373.9841.xxxxx

 xxxxx Please insert voltage and frequency codes
 Installation of a 40 µm filter in front of the valve is required!

Acc. to PED 2014/68/EU (97/23/EC) and ATEX 2014/34/EU (94/9/EC)!

Option selector

8590★★★★.★★★★.★★★★

Port size	Substitute
Single valve 40 µm filter included in the inlet port	372
Single valve without filter	373

Frequency	Substitute
See table frequency codes	xx
Voltage	Substitute
See Voltage Codes	xxx
Solenoid options	Substitute
Solenoid with 10 m cabel ends Protection class according to - II 2 G Ex mb IIC T4 Gb - II 2 D Ex mb tb IIIC T130°C Db	9845
For d.c. with 1/2 - 14 NPT female thread and 460 mm flying leads Protection class acc. to ANSI/NEMA USA: FM approved (File-No. 2Z2A6.AE) Canada: CSA certified (File-No. LR 57643-6) Solenoids in temperature class T3C (160°C) are useable in Ex-areas (see table Ex-areas)	3826
For a.c. with integrated rectifier with 1/2 - 14 NPT female thread and 460 mm flying leads Protection class acc. to ANSI/NEMA USA: FM approved (File-No. 2Z2A6.AE) Canada: CSA certified (File-No. LR 57643-6) Solenoids in temperature class T3C (160°C) are useable in Ex- areas (see table Ex-areas)	3827
Solenoid with terminal box cable gland M20 x 1,5 cable clamp ø 5 ... 8 mm Protection class according to - II 2 G Ex e mb IIC T4/T5 Gb - II 2 D Ex tb IIIC T 130°C Db IP66 Ambient temperature: T4 -40 ... +50°C T5 -40 ... +40°C	428x
Solenoid with terminal box cable gland M20 x 1,5 (cabel clamp ø 10 ... 14 mm) 1/2 ... 1/4 NPT (cabel clamp ø 7,5 ... 11,9 mm) Protection class according to - II 2 G Ex d mb IIC T4/T5 Gb - II 2 D Ex tb IIIC T 130°C Ambient temperature: T4 -40 ... +50°C T5 -40 ... +40°C	468x

Standard solenoid systems

Voltage and Frequency Solenoid 9841

Code	Code	Voltage	Frequency	Power consumption	
				Inrush	Holding
024	00	24 V d.c.	-	10,1 W	10,1 W
230	59	230 V a.c.	50 ... 60 Hz	9,2 VA	9,2 VA

Ex-areas

	Class	Division	Groups
Gases + fumes	I	1 and 2	A ... D
Dusts	II	1 and 2	E ... G
Fibres + fluffs	III	1 and 2	-

Solenoid systems

ATEX category	Protection class	Solenoid	Standard voltages
II2G	Ex mb IIC T4 Gb	9841	24 V d.c., 110 V a.c., 230 V a.c.
II2D	Ex mb tb IIIC T130°C Db with 3 m connection cable		

Electrical details for all solenoid systems

Voltage range	±10%
Duty cycle	100% ED
Protection class	EN 60529 IP65

According to DIN VDE 0580 at a solenoid temperature of +20°C.
At operating state temperature the input power of a coil decreases by up to ca. 30% due to physical reasons.

Dimensions

Dimensions in mm
Projection/First angle

