

- > Port size: G1/4 (ND 4)
- > Low hysteresis
- > Good repeatability
- > High flow rate
- > High sensitivity response
- > Short switching time
- > Compact design
- > Conforms with RoHS



### Technical features

**Medium:**

Compressed air, filtered (40µm), lubricated or non-lubricated, water

**Operation:**

Proportional solenoid

**Flow direction:**

Fixed

**Mounting:**

Any, but preferably with solenoid vertical

**Operating pressure p1:**

20 bar ( 290 psi) max.

**Pressure setting p2:**

1 ... 16 bar (14 ... 232 psi)

**Port size:**

G1/4

**Voltage:**

12 V d.c.

**Nominal power (PN):**

22 W

**Resistance (R20):**

6,5 Ω

**Duty cycle:**

100 %

**Hysteresis \*1):**

<3% (at max. p2)

**Repeatability \*1):**

<1% (p2 max)

**Degree of protection:**

IP65 with connector

**Ambient/Media temperature:**

-10 ... +40°C (+14 ... +104°F)

Air supply must be dry enough to avoid ice formation at temperatures below +2°C (+35°F)

**Materials:**

Body: stainless steel

Seals: FPM

**Drive electronics:**

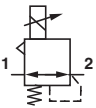
pQ05 See datasheet 7.5.100

pQ11 See datasheet 7.5.115

pQ12 See datasheet 7.5.120

\*1) Values at 20°C (+28°F) with dither 15% at 40 Hz

### Technical data, standard model

Symbol	Offrce (mm)	Port size	Pressure setting p <sub>2</sub> (bar)	Operating pressure p <sub>1</sub> max. (bar)	Rated current * In (mA)	Weight (kg)	Model
	4	G 1/4	1 ... 16	20	1800	1,35	4088126707901200

\* These are typical values depending on ambient temperature and valve tolerances.

### Accessory

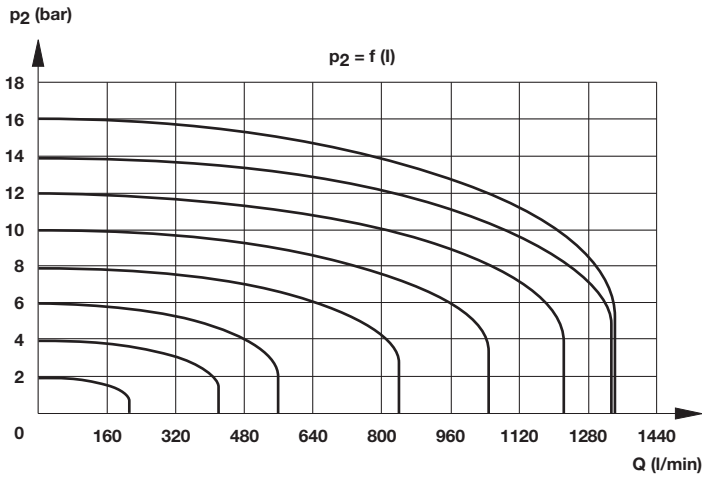
**Connector  
DIN EN 175301-803, form A**



**Model**

0570275

**Characteristic flow curves at  $p_1$  20 bar \*,**  
**Medium: Compressed air**

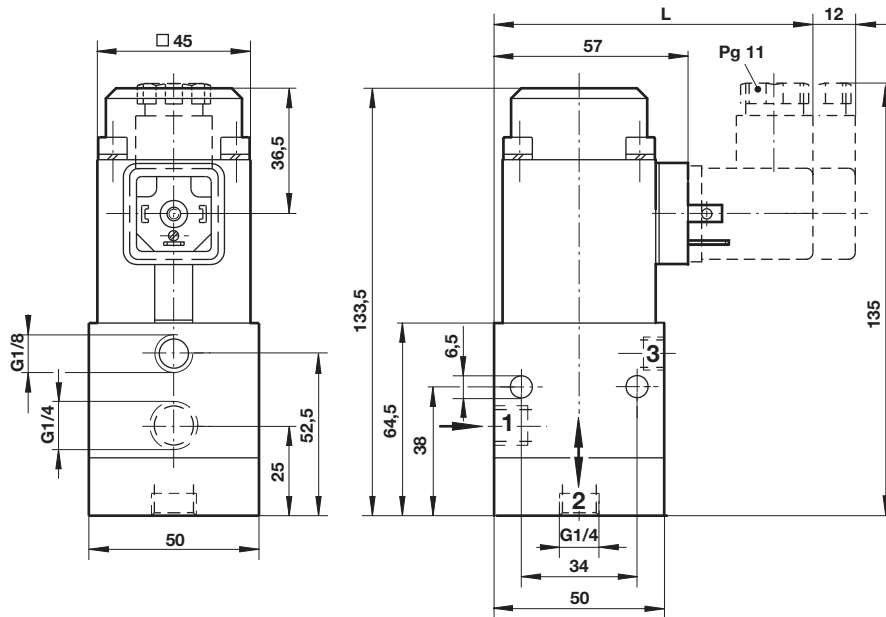


\* The values are serve for the basic illustration and could be different to the end product due to the device tolerances.

Furthermore a deviation of the values during the operating time should be expected. This characteristic can be avoided by a regulated configuration.

**Dimensions**

Dimensions in mm  
 Projection/First angle



**Warning**

These products are intended for use in industrial compressed air systems only. Do not use these products where pressures and temperatures can exceed those listed under »**Technical features/data**«.

Before using these products with fluids other than those specified, for non-industrial applications, life-support systems or other applications not within published specifications, consult IMI NORGREN.

Through misuse, age, or malfunction, components used in fluid power systems can fail in various modes.

The system designer is warned to consider the failure modes of all component parts used in fluid power systems and to provide adequate safeguards to prevent personal injury or damage to equipment in the event of such failure.

System designers must provide a warning to end users in the system instructional manual if protection against a failure mode cannot be adequately provided.

System designers and end users are cautioned to review specific warnings found in instruction sheets packed and shipped with these products.