

L82M, L82C - Micro and Oil-fog lubricator Excelon® Plus Modular System

- Port size: 1/4" & 3/8" (ISO G/PTF)
- Excelon® Plus design allows in-line installation or modular installation with other Excelon® Plus products
- Flow sensor provides a nearly constant oil/air ratio over a wide range of flows
- Double safety lock bowl
- Metal bowl with prismatic liquid level indicator lens
- Light weight Polycarbonate bowl
- All round (360°) visibility of sightdome for ease of drip rate setting
- Choice of two oil delivery systems



Technical features

Medium:

Compressed air only

Maximum operating pressure:

Polycarbonate bowl: 10 bar (145 psi)
Metal bowl: 17 bar (246 psi)

Port size:

G1/4 G3/8, 1/4 PTF, 3/8 PTF

Flow:

L82C: 26 dm³/s at port size 1/4"
L82C: 24 dm³/s at port size 3/8"
L82M: 22 dm³/s at port size 1/4"
L82M: 21 dm³/s at port size 3/8"
inlet pressure 145 psi (10.3 bar),
6.3 bar (91 psi) set pressure and a
Δp: 1 bar (14.5 psi) droop from set.

Start point:

Oil-fog L82C: 0.5 dm³/s
Mirco-fog L82M: 1.2 dm³/s


Ambient/Media temperature:

Polycarbonate bowl:
-10 ... +60°C (14 ... +140°F)
Metal bowl:
-20 ... +65°C (-4 ... +149°F)
Air supply must be dry enough
to avoid ice formation at
temperatures below +2°C (+35°F)

Materials:

Transparent Bowl: Polycarbonate
with Polypropylene Guard.
Metal Bowl: Die cast Zinc with PA
liquid level indicator lens
Body: Die cast zinc
Body cover: ABS
Sightdome: Transparent PA
Bowl 'O'- ring: Chloroprene
Elastomers: NBR

Technical data L82—standard models

Symbol	Port Size	Lubricator type	Bowl	Weight (kg)	Model
	G1/4	Micro-fog	Guarded polycarbonate	0,22	L82M-2GP-EPN
	G3/8	Micro-fog	Guarded polycarbonate	0,22	L82M-3GP-EPN
	G1/4	Micro-fog	Metal with level indicator	0,40	L82M-2GP-EDN
	G3/8	Micro-fog	Metal with level indicator	0,40	L82M-3GP-EDN
	G1/4	Oil-fog	Guarded polycarbonate	0,20	L82C-2GP-EPN
	G3/8	Oil-fog	Guarded polycarbonate	0,20	L82C-3GP-EPN
	G1/4	Oil-fog	Metal with level indicator	0,40	L82C-2GP-EDN
	G3/8	Oil-fog	Metal with level indicator	0,40	L82C-3GP-EDN

Option selector

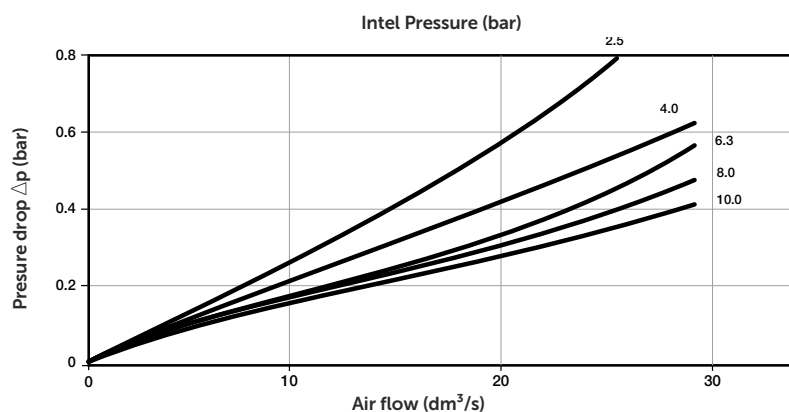
L82★ – ★★P – E ★ N

Type	Substitute
Oil-fog lubricator	C
Micro-fog lubricator	M
Port size	Substitute
1/4"	2
3/8"	3
Thread form	Substitute
PTF	A
ISO G (standard)	G

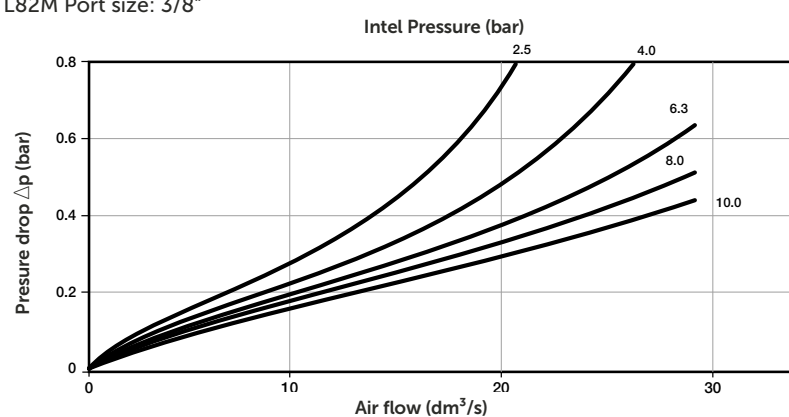
Bowl	Substitute
Metal with liquid indicator	D
Transparent with guard (standard)	P

Flow characteristics

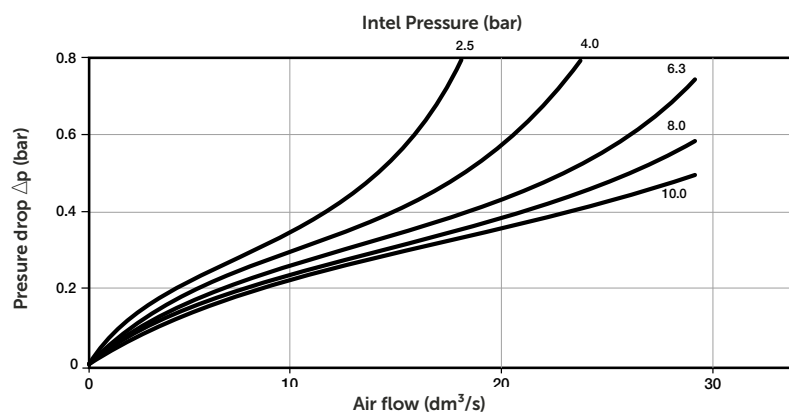
L82M Port size: 1/4"



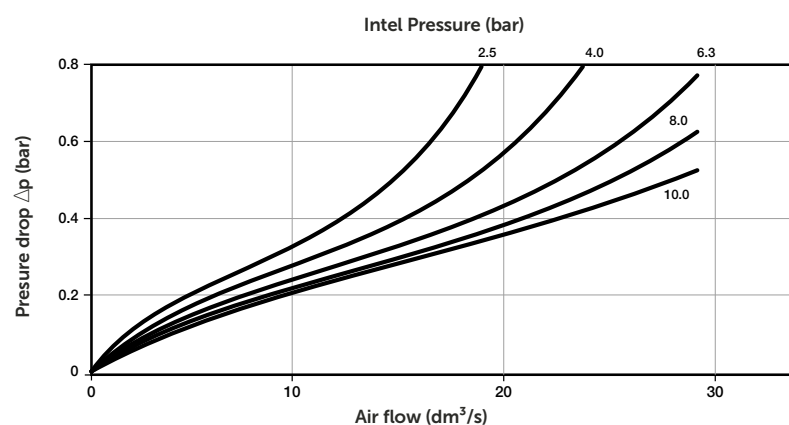
L82M Port size: 3/8"



L82C Port size: 1/4"



L82C Port size: 3/8"



Accessories

Wall mounting bracket



Page 4

820024-50KIT

Quickclamp



Page 4

820014-51KIT

Quickclamp
with bracket assembled



Page 4

820014-52KIT

Pressure sensing block
1/4 PTF



Page 4

820016-50KIT

Pressure sensing block
G1/4



Page 4

820016-51KIT

Full flow porting block
3/8" PTF



Page 4

820028-50KIT

Full flow porting block
G3/8



Page 4

820028-53KIT

Pressure switch interface block
(18D pressure switch)



Page 5

0523109000000000

Pneumatic pressure switch
18D (0,5 ... 8 bar) *1)



Page 5

0881300

Digital pressure switch
51D (-1 ... 10 bar) *2)



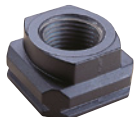
Page 5

0860810

*1) Flanged version. For other pressure ranges, please see data sheet 5.11.001

*2) For other pressure ranges, please see data sheet 5.11.385

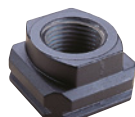
Port Adaptors
1/4 PTF



Page 5

820015-02KIT

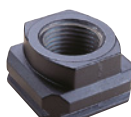
Port Adaptors
3/8 PTF



Page 5

820015-03KIT

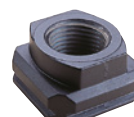
Port Adaptors
G1/4



Page 5

820015-08KIT

Port Adaptors
G3/8



Page 5

820015-09KIT

Accessories

Lubricator bowl
Guarded Poly



820025-52KIT

Lubricator bowl
Metal with sight glass



820003-52KIT

Lubricator sight dome kit

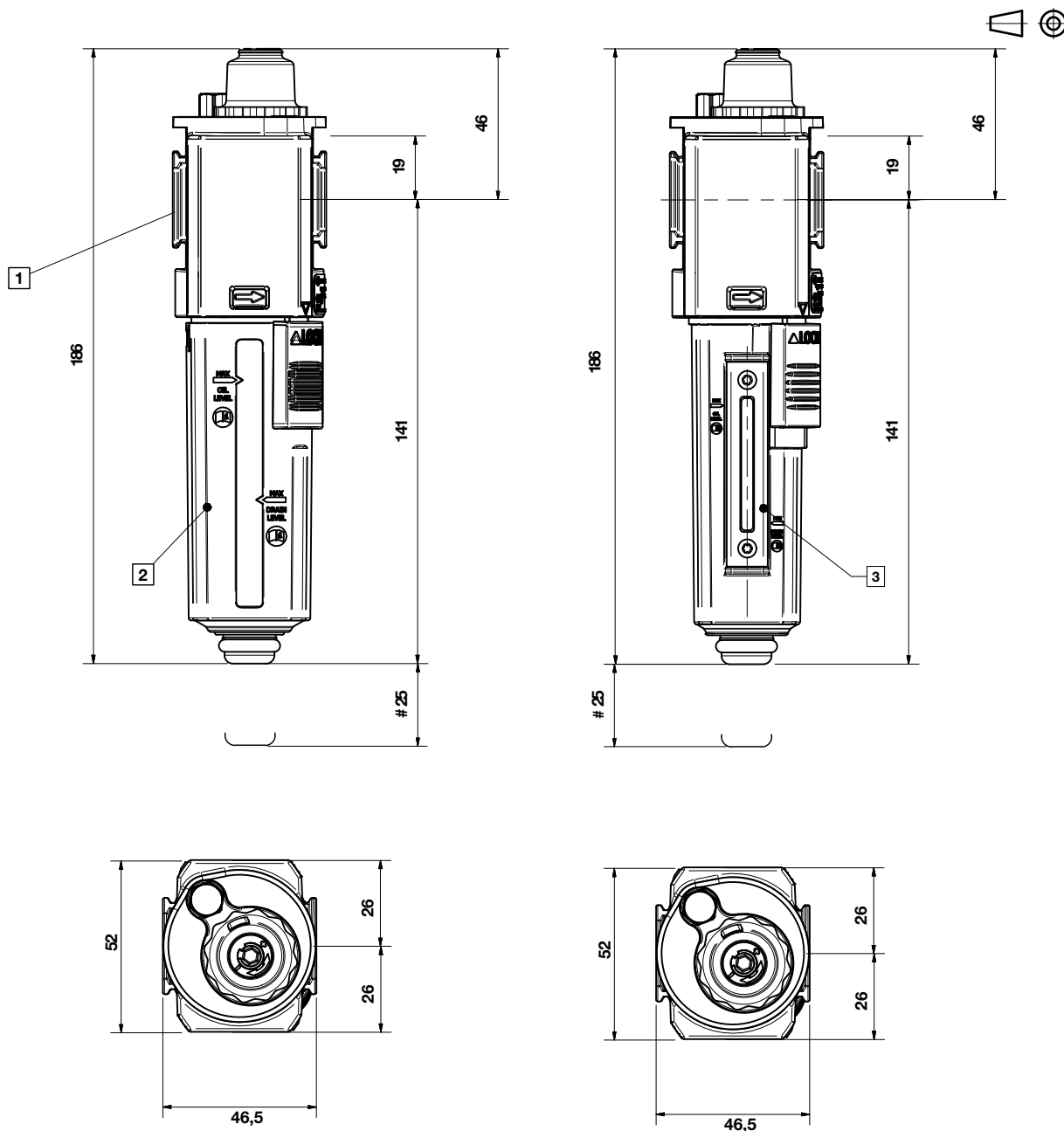


Micro-fog (red) 840055-50KIT

Oil-fog (green) 840055-51KIT

Dimensions

Dimensions in mm
Projection/First angle



Minimum clearance for bowl removal

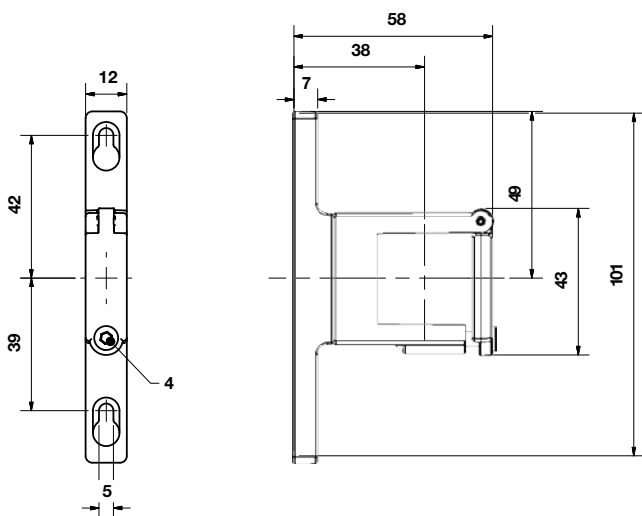
1 Main ports 1/4", 3/8" (ISO G/PTF)

2 Transparent bowl with guard

3 Metal bowl with liquid level indicator lens

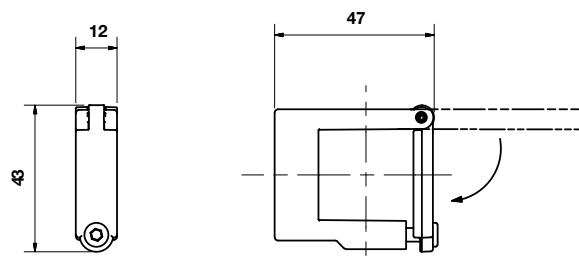
Accessories

Quikclamp with wall bracket

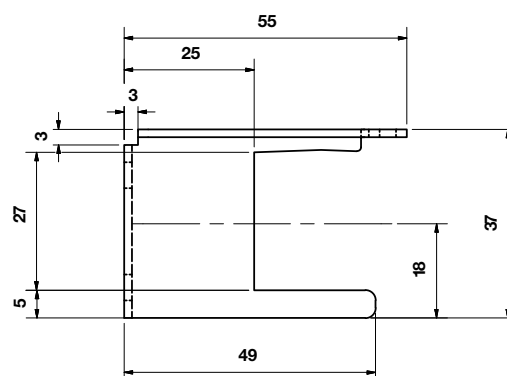
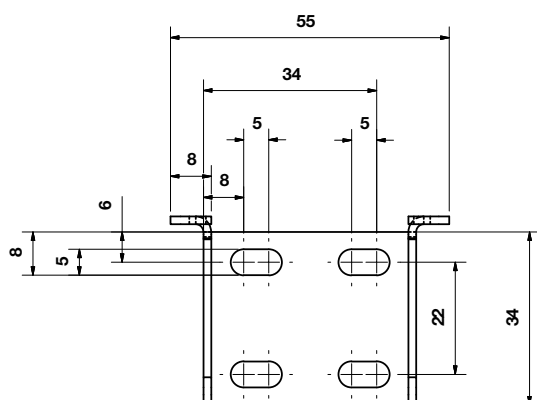


Quikclamp

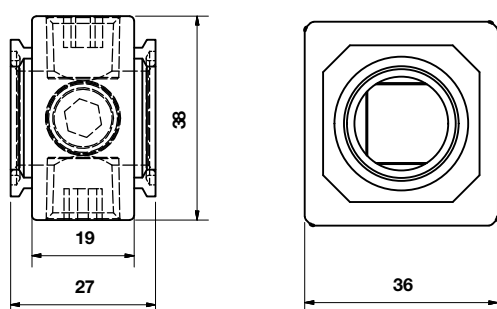
Dimensions in mm
Projection/First angle



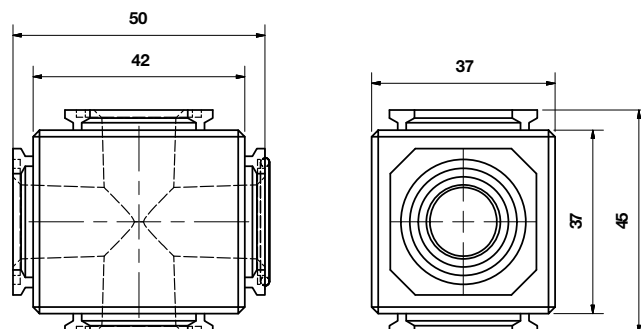
Mounting bracket



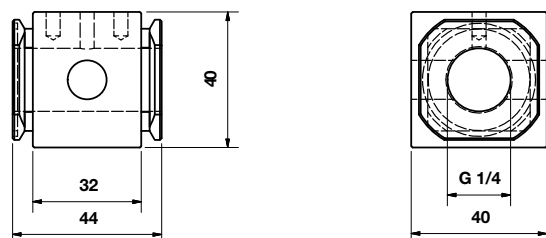
Pressure sensing block



Full flow porting block

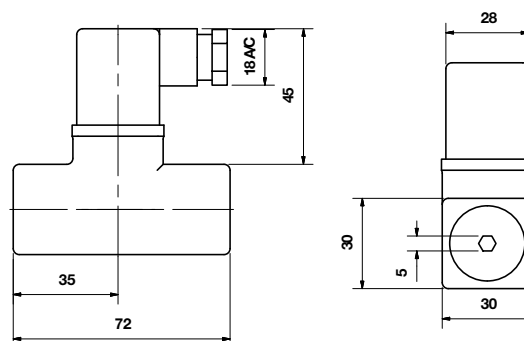


Porting block for 18D pressure switch

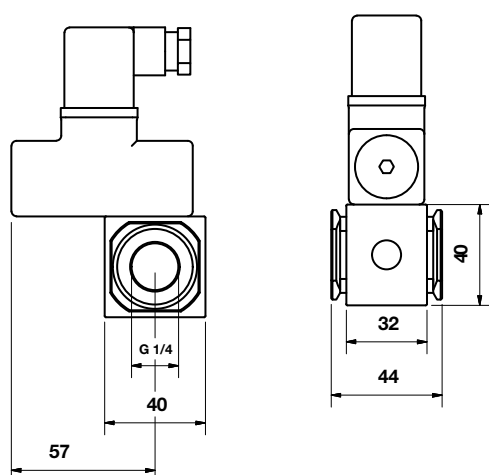


18D Pressure switch

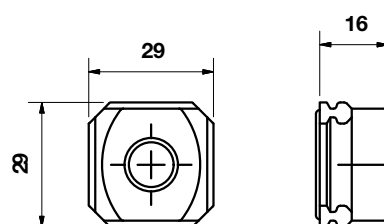
Dimensions in mm
Projection/First angle



18D Porting block and 18D assembled

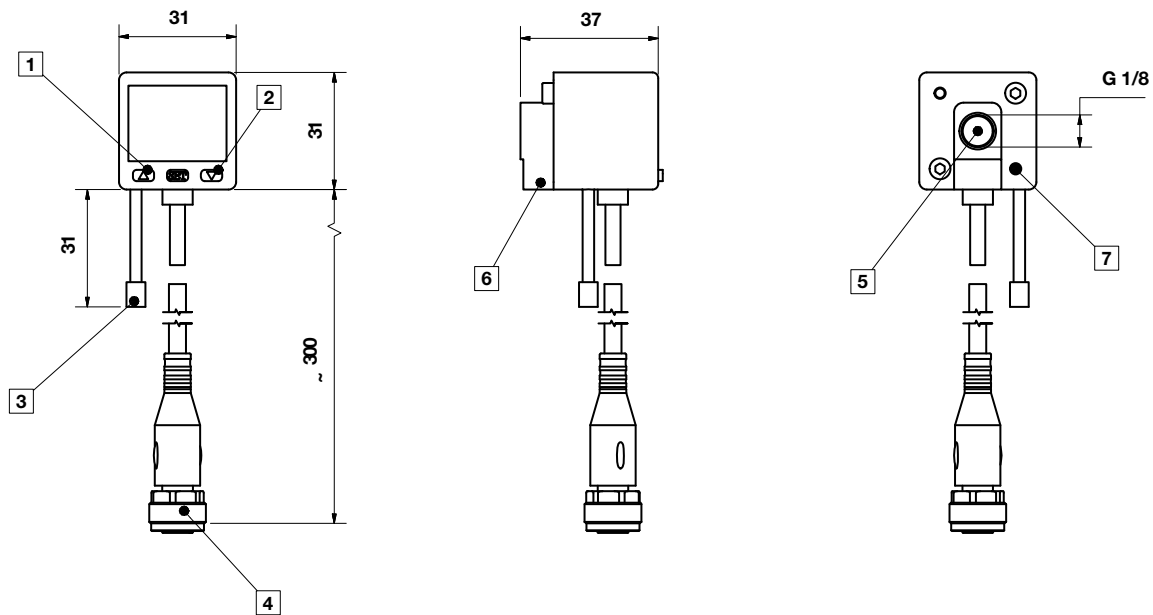


Pipe adaptor



51D Pressure switch - digital

Dimensions in mm
Projection/First angle



- 1 Switch OUT 1, green LED
- 2 Switch OUT 2, red LED
- 3 Dustproof protector
- 4 Connector M12 x 1
- 5 Inlet port
- 6 Alternative inlet port G1/8 plugged
- 7 Thread for mounting screw

Warning

These products are intended for use in industrial compressed air systems only. Do not use these products where pressures and temperatures can exceed those listed under **»Technical features/data«**.

Before using these products with fluids other than those specified, for non-industrial applications, life-support systems or other applications not within published specifications, consult Norgren Ltd.

Through misuse, age, or malfunction, components used in fluid power systems can fail in various modes.

The system designer is warned to consider the failure modes of all component parts used in fluid power systems and to provide adequate safeguards to prevent personal injury or damage to equipment in the event of such failure.

System designers must provide a warning to end users in the system instructional manual if protection against a failure mode cannot be adequately provided.

System designers and end users are cautioned to review specific warnings found in instruction sheets packed and shipped with these products.