


## T82T - 3/2 shut-off valve Excelon® Plus Modular System

- Port size: 1/4" ... 3/8" (ISO G/PTF)
- Excelon® Plus design allows in-line installation or modular installation with other Excelon® Plus products
- 3/2 way function
- Threaded exhaust port
- Lockable in closed position with padlock
-  DoC in accordance with 2014/34/EU/ATEX



### Technical features

#### Medium:

Compressed air only

#### Maximum supply pressure:

17 bar (246 psi)

#### Port size:

G1/4, G3/8, 1/4 PTF, 3/8 PTF

#### Flow:

45 dm<sup>3</sup>/s at port size 1/4",  
41 dm<sup>3</sup>/s at port size 3/8",  
inlet pressure 10 bar (145 psi),  
6.3bar (91psi) set pressure and a  
 $\Delta p$ : 0.5 bar (7.25 psi)  
droop from set.  
Exhaust flow: 1.54 dm<sup>3</sup>/s.

#### Ambient/Media temperature:


-20 ... +65°C (-4 ... +149°F)  
Air supply must be dry enough  
to avoid ice formation at  
temperatures below +2°C (+35°F).

#### Materials:

Body: Die cast aluminium  
Body covers: ABS  
Elastomers: NBR  
Valve: Brass

#### Atex:

Shut-off valves T82 are in  
conformity with ATEX 2014/34/EU

 II 2 GD  
Ex h IIC T6 Gb  
EX h IIIC T85°C Db

### Technical data T82T – Standard models

Symbol	Port Size	Function	Exhaust port	Weight (kg)	Model
	G1/4	3/2	G1/4	0,20	T82T-2GA-B1N
	G3/8	3/2	G1/4	0,20	T82T-3GA-B1N

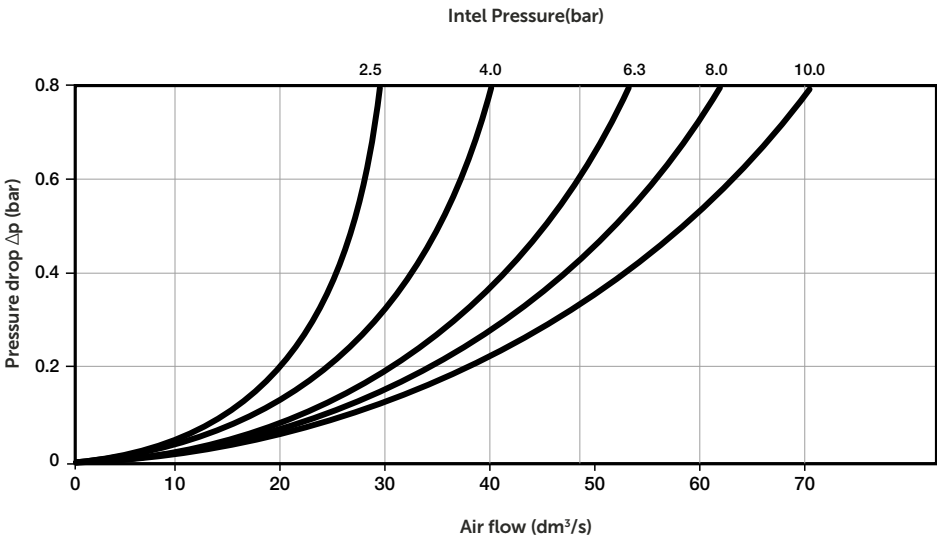
### Option selector

T82T-★ ★ A-B1N

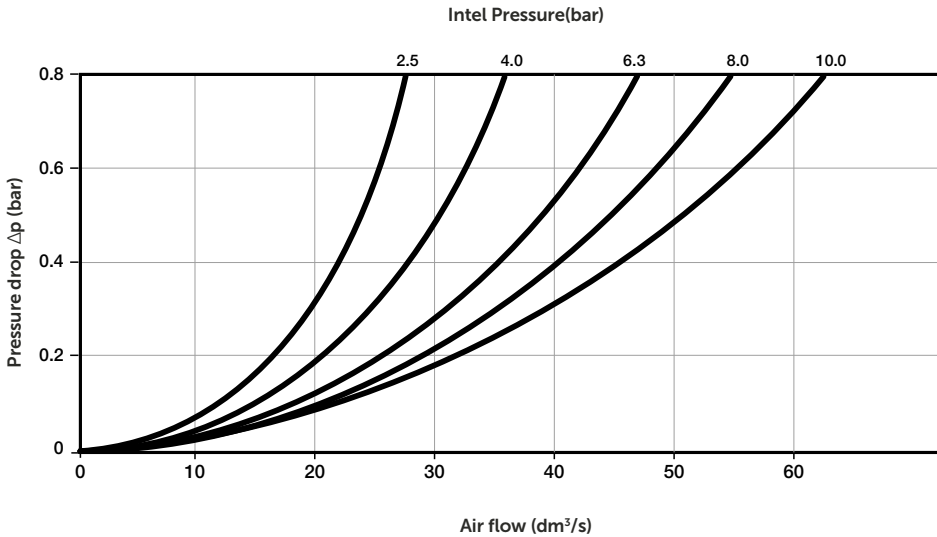
Function	Substitute	Thread form	Substitute
3/2	T	PTF	A
		ISO G (standard)	G
		Port size	Substitute
		1/4"	2
		3/8"	3

Flow characteristics











Port size: 1/4"



Port size: 3/8"



## Accessories



<b>Wall mounting bracket</b>  Page 4 820024-50KIT	<b>Quikclamp</b>  Page 4 820014-51KIT	<b>Quikclamp with bracket assembled</b>  Page 4 820014-52KIT	<b>Pressure sensing block 1/4 PTF</b>  Page 5 820016-50KIT	<b>Pressure sensing block G1/4</b>  Page 5 820016-51KIT
<b>Full flow porting block 3/8" PTF</b>  Page 5 820028-50KIT	<b>Full flow porting block G3/8</b>  Page 5 820028-53KIT			
<b>Pressure switch interface block (18D pressure switch)</b>  Page 5 0523109000000000	<b>Pneumatic pressure switch 18D (0,5 ... 8 bar) *1)</b>  Page 5 0881300	<b>Digital pressure switch 51D (-1 ... 10 bar) *2)</b>  Page 5 0860810		

\*1) Flanged version. For other pressure ranges, please see data sheet 5.11.001

\*2) For other pressure ranges, please see data sheet 5.11.385

<b>Port Adaptors 1/4 PTF</b>  Page 5 820015-02KIT	<b>Port Adaptors 3/8 PTF</b>  Page 5 820015-03KIT	<b>Port Adaptors G1/4</b>  Page 5 820015-08KIT	<b>Port Adaptors G3/8</b>  Page 5 820015-09KIT
---	---	--	--

## Padlock

<b>Padlock</b>  840055-01KIT	<b>Lockout device</b>  840055-02KIT
---	--

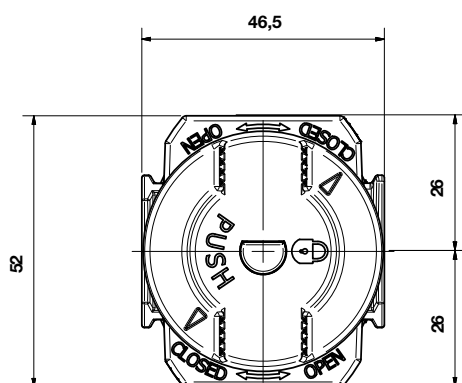
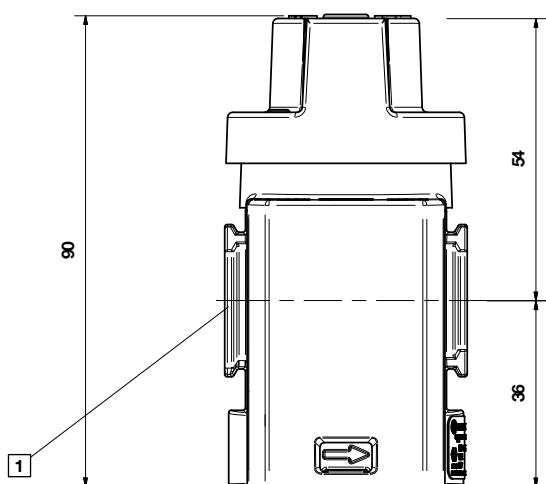
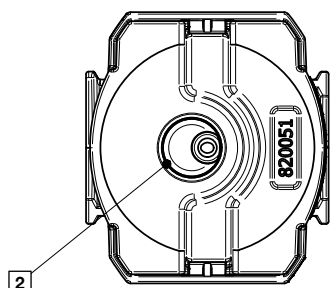
## Silencer

<b>Porous plastic silencer *3) G1/4</b>  M/S2	<b>Porous plastic silencer *3) G1/4</b>  0014600000000000	<b>Sinter bronze silencer *3) G1/4</b>  T40C2800	<b>Porous plastic silencer *3) 1/4 PTF</b>  MS002A
--	--	---	--

\*3) Max. pressure of silencers listed in this data sheet : 10 bar. For pressure higher than 10 bar please contact Norgren

## Dimensions

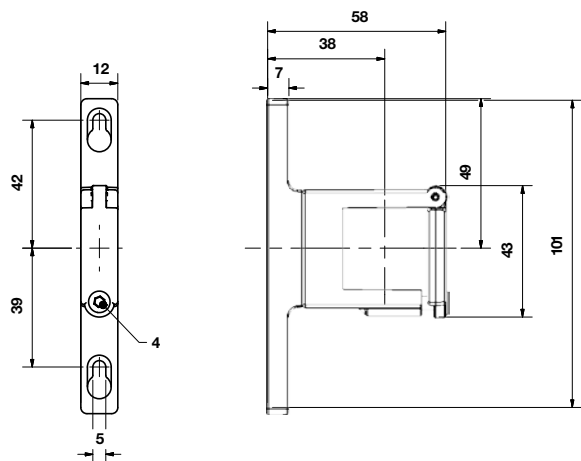
Dimensions in mm  
Projection/First angle



- 1 Main ports 1/4" or 3/8" ISO G/PTF
- 2 Exhaust Port Rc1/4 or 1/4 PTF

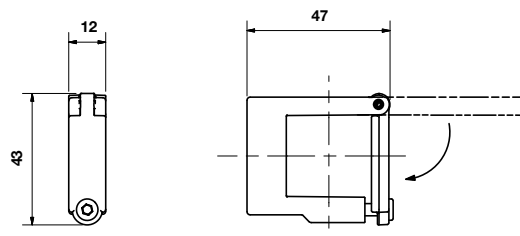
## Accessories

### Quikclamp with wall bracket

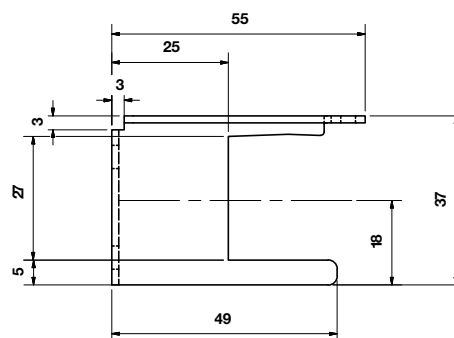
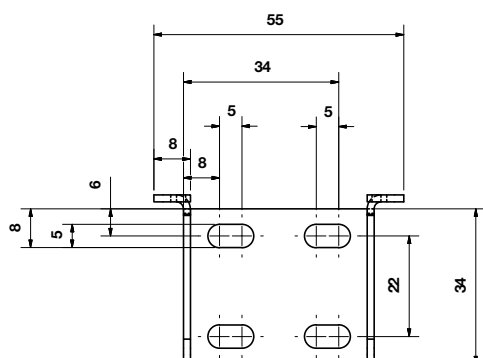


### Quikclamp

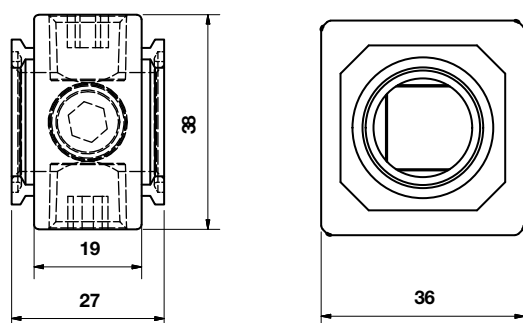
Dimensions in mm  
Projection/First angle



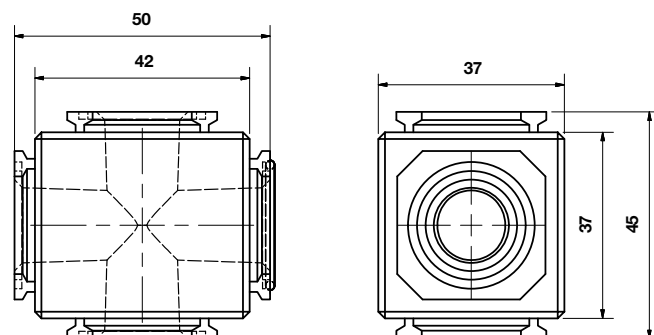
### Wall Mounting bracket



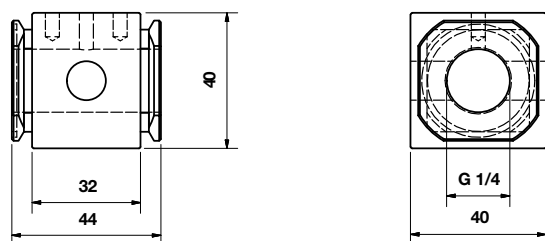
### Pressure sensing block



### Full flow portiang block

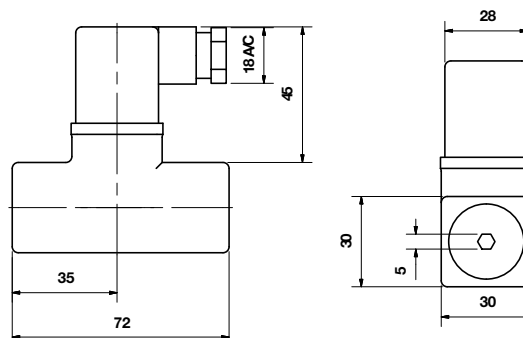


## Porting block

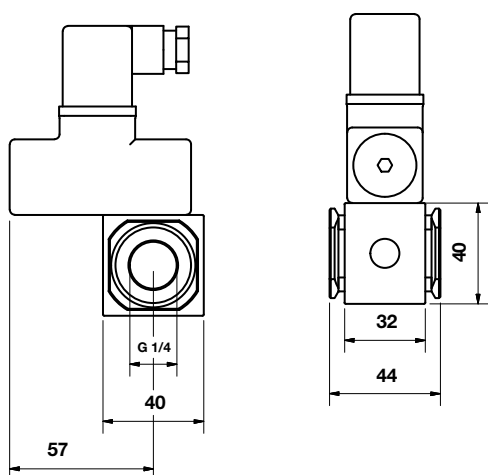


## 18D Pressure switch

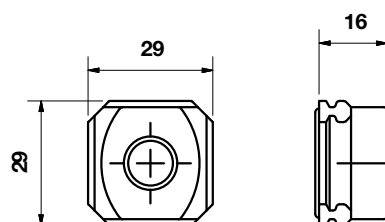
Dimensions in mm  
Projection/First angle



## 18D Porting block and 18D assembled

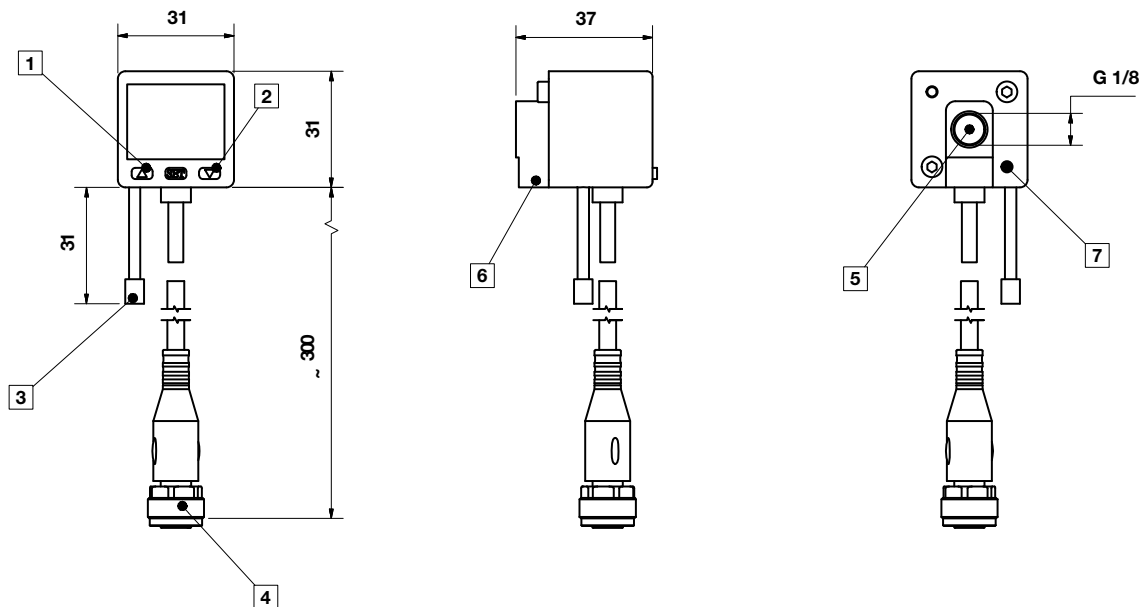


## Pipe adaptor



## 51D Pressure switch - digital

Dimensions in mm  
Projection/First angle



- 1 Switch OUT 1, green LED
- 2 Switch OUT 2, red LED
- 3 Dustproof protector
- 4 Connector M12 x 1
- 5 Inlet port
- 6 Alternative inlet port G1/8 plugged
- 7 Thread for mounting screw

### Warning

These products are intended for use in industrial compressed air systems only. Do not use these products where pressures and temperatures can exceed those listed under **»Technical features/data«**.

Before using these products with fluids other than those specified, for non-industrial applications, life-support systems or other applications not within published specifications, consult Norgren Ltd.

Through misuse, age, or malfunction, components used in fluid power systems can fail in various modes.

The system designer is warned to consider the failure modes of all component parts used in fluid power systems and to provide adequate safeguards to prevent personal injury or damage to equipment in the event of such failure.

System designers must provide a warning to end users in the system instructional manual if protection against a failure mode cannot be adequately provided.

System designers and end users are cautioned to review specific warnings found in instruction sheets packed and shipped with these products.