

- > **3 Model Options:**
Standard; Magnetic piston for end of stroke sensing; Non-rotating rod
- > **Standard Options:**
Bumpers, Alternate Port Location, Rod Wiper, Switch Track, and more
- > **Low and High Temperature Lubrication and Seals**
- > **Permanent grease lubricant requires no additional lubrication during service**



Technical Data

Medium

Air only

Operation

Double action

Operating Pressure

250 PSI

Operating Temperature

-20° F to 200° F

Cylinder Diameters

9/16" - 2"

Strokes

1/2" - 32"

Ports

10-32, 1/8" NPT, 1/4" NPT

Lubrication

Semi-synthetic grease

Materials

Barrel: 304 stainless steel

End Caps: Aluminum

Piston Rod: 303 stainless steel

Piston and rod seals: Buna N

"U" cups

Rod and pivot bushings:

Sintered bronze

Mounting

Nose & Universal

Expected life

3,000 miles without additional lubrication when properly applied

Order

3R075X1.5X1.5-DPBPRR1.25

Type	Substitute
Three Position	3R
Three Position Non-Rotating	3NR

Bore	Substitute
9/16"	056
3/4"	075
1-1/16"	106
1-1/2"	150
2"	200

Stroke A In inches and decimal fractions	Substitute
1/2"	0.5
1"	1
1-1/2"	1.5
3-3/4"	3.75
2"	2
etc.	

Stroke B In inches and decimal fractions	Substitute
1/2"	0.5
1"	1
1-1/2"	1.5
3-3/4"	3.75
2"	2
etc.	

Stroke Length Maximums
Nose Mount 2 x Stroke A + Stroke B Max = 12"
Universal Mount 2 x Stroke A + Stroke B Max = 32"

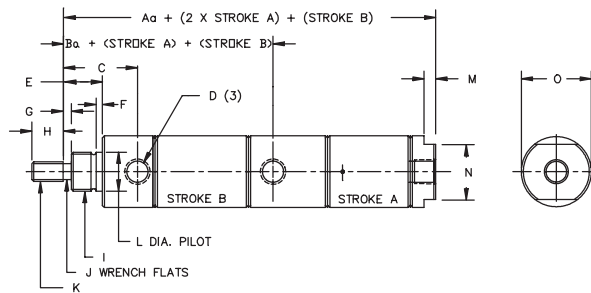
Options	Substitute
Bumpers	B
Ports Rotated 90°	PL
Low Temp Seals/Lube (-40° F to 200° F)	LT
No threads on rod	PR
Side ported rear head	PC
Magnet (no track) ¹	M
Magnet with track in position 1, 2, 3 or 4. Include "M" only once and each track location after that. For example, a cylinder with track in position 1 and 3 would have option M13	M1, M2, M3, M4
High Temp Seals/Lube (0° F to 400° F)	V

*Enter options in alphabetical order
¹ Magnet only comes on front piston

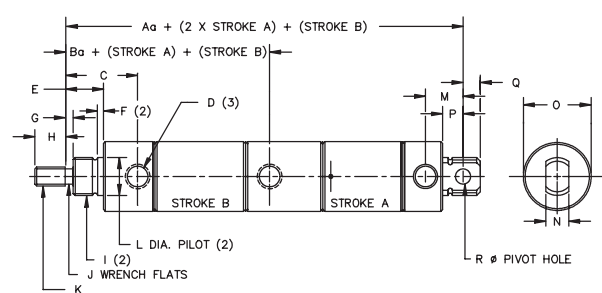
Mounting	Substitute
Nose Mount	DN
Universal Mount	DP

Dimensions (All Stainless Steel Non-Repairable Original Line Cylinders)

DN Mounting Style (in)



DP Mounting Style (in)



DN Model

Bore	Aa	Ba	C	D	E	F	G	H	I	J	K	L	M	N	O	Bumper Option	
																Aa	Ba
9/16" (056)	4.12	2.25	0.75	#10-32	0.38	0.06	N/A	0.50	7/16-20	N/A	#10-32	.434/.437	0.19	0.50	0.62	4.31	2.31
3/4" (075)	5.47	3.12	0.97	1/8 NPT	0.50	0.09	N/A	0.50	5/8-18	N/A	1/4-28	.621/.624	0.19	0.62	0.81	5.47	3.12
1-1/16" (106)	5.97	3.25	1.19	1/8 NPT	0.62	0.09	0.12	0.50	5/8-18	0.25	5/16-24	.621/.624	0.19	0.88	1.12	6.09	3.25
1-1/2" (150)	6.5	3.69	1.50	1/8 NPT	0.88	0.09	0.25	0.75	3/4-16	0.38	7/16-20	.746/.749	0.25	0.88	1.56	6.62	3.69
2" (200)	8.25	4.78	1.92	1/4 NPT	1.19	0.12	0.38	0.88	1-1/4-12	0.50	1/2-20	1.375/1.372	0.31	1.25	2.09	8.62	4.91

DP Model

Bore	Aa	Ba	C	D	E	F	G	H	I	J
9/16" (056)	4.41	2.25	0.75	#10-32	0.38	0.06	N/A	0.50	7/16-20	N/A
3/4" (075)	6.25	3.12	0.97	1/8 NPT	0.50	0.09	N/A	0.50	5/8-18	N/A
1-1/16" (106)	6.56	3.25	1.19	1/8 NPT	0.62	0.09	0.12	0.50	5/8-18	0.25
1-1/2" (150)	7.18	3.69	1.50	1/8 NPT	0.88	0.09	0.25	0.75	3/4-16	0.38
2" (200)	9.19	4.78	1.92	1/4 NPT	1.19	0.12	0.38	0.88	1-1/4-12	0.50

DP Model

Bore	K	L	M	N	O	P	Q	R	Aa	Bumper Option	
										Aa	Ba
9/16" (056)	#10-32	.434/.437	0.38	0.31	0.62	0.25	0.19	0.157	4.59	2.31	
3/4" (075)	1/4-28	.621/.624	0.62	0.38	0.86	0.34	0.28	0.250	6.25	3.12	
1-1/16" (106)	5/16-24	.621/.624	0.62	0.38	1.12	0.34	0.28	0.250	6.68	3.25	
1-1/2" (150)	7/16-20	.746/.749	0.81	0.62	1.56	0.50	0.38	0.375	7.31	3.69	
2" (200)	1/2-20	1.375/1.372	1.03	0.75	2.08	0.56	0.44	0.500	9.56	4.91	

Weights (lbs)

Model	Base Weight	Adder per ince of Combined Stroke*
056-DA	0.13	Total combined stroke x .02
056-DP	0.13	Total combined stroke x .02
075-DA	0.24	Total combined stroke x .03
075-DP	0.32	Total combined stroke x .03
106-DA	0.36	Total combined stroke x .05
106-DP	0.45	Total combined stroke x .05
150-DA	0.96	Total combined stroke x .08
150-DP	1.09	Total combined stroke x .08
200-DA	2.25	Total combined stroke x .15
200-DP	2.47	Total combined stroke x .15

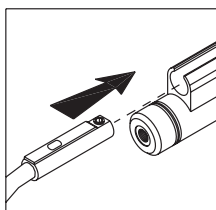
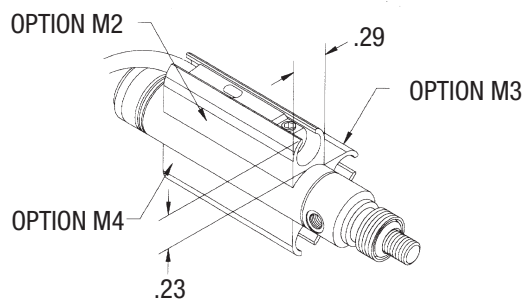
Nose Mount Torque Values

Thread Size	Torque (IN*LB) FT*LB	Bore Size
7/16-20 UNF	(94) 7	9/16"
5/8-18 UNF	(336) 28	3/4", 1-1/16"
3/4-16 UNF	(480) 40	1-1/2"
1 1/4-12 UNF	(1440) 120	2"

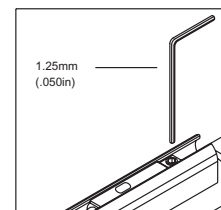
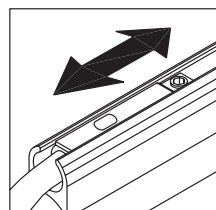
Accessories

Switch Track Options

For cylinders with M1, M2, M3 and M4 options

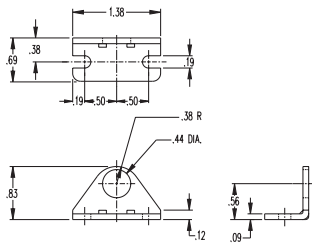


*M1 = Inline with ports



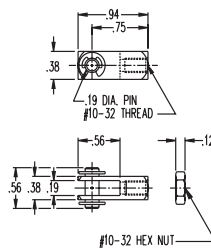
9/16" Bore Accessories

RE-FB-043D



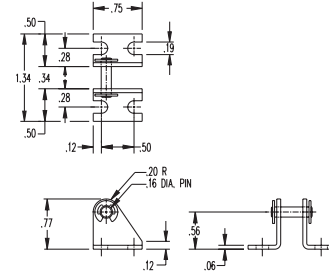
Mounting Bracket

RE-RC-043



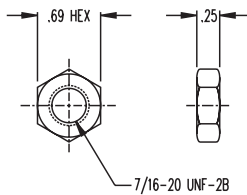
Piston Rod Clevis

RE-PB2-056



Pivot Bracket with Pin

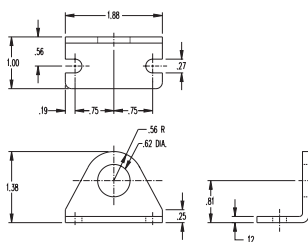
RE-MN-043A



Mounting Nut

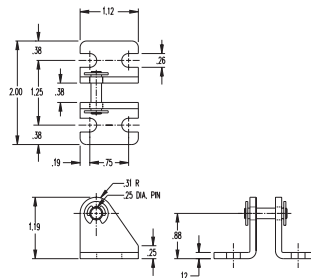
3/4" Bore Accessories

RE-FB-075D



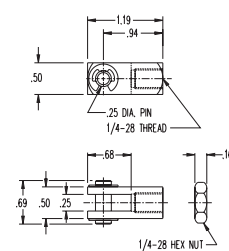
**Mounting Bracket (for Double
Acting Models)**

RE-PB2-075



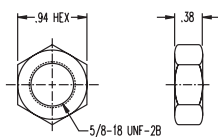
Pivot Bracket

RE-RC-075



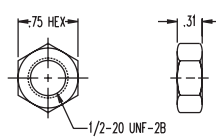
Pivot Rod Clevis

RE-MN-075A



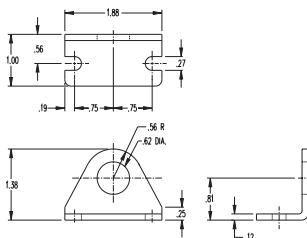
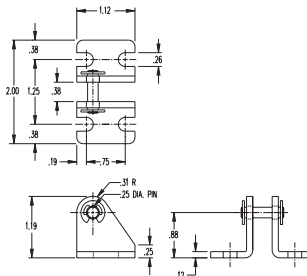
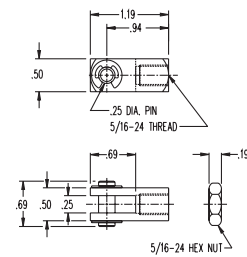
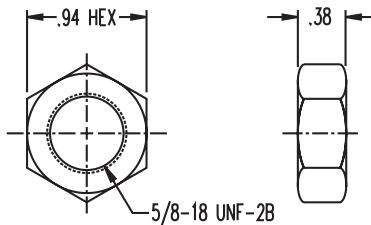
Mounting Nut

RE-MN-075B

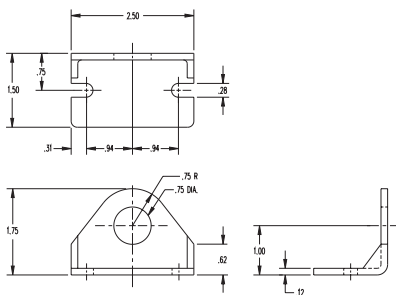
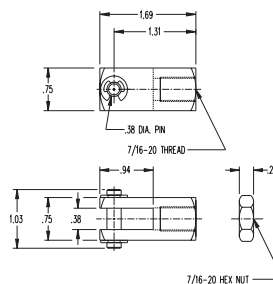
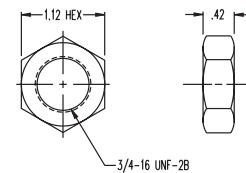
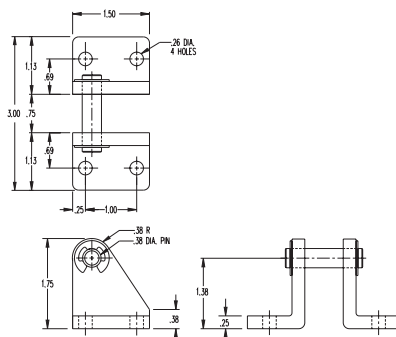


Mounting Nut

1-1/16" Bore Accessories

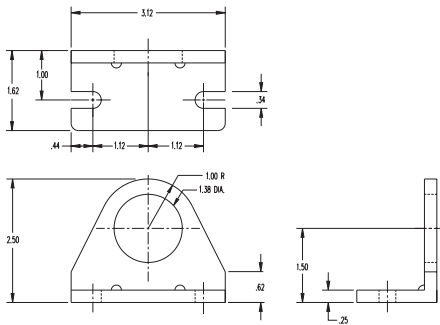
RE-FB-075D

Mounting Bracket (for Single & Double Acting Models)
RE-PB2-075

Pivot Bracket
RE-RC-106

Pivot Brackets
RE-MN-075A

Mounting Nut

1-1/2" Bore Accessories

RE-FB-125

Mounting Bracket
RE-RC-125

Piston Rod Clevis
RE-MN-125

Mounting Nut
RE-PB2-200

Pivot Brackets

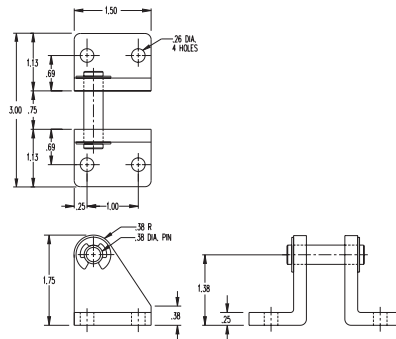
2" Bore Accessories

RE-FB-200



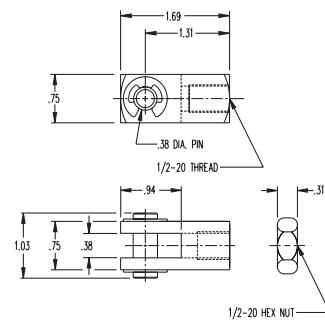
Mounting Bracket

RE-PB2-200



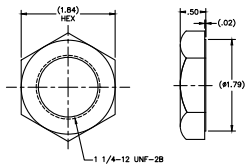
Pivot Brackets

RE-RC-175



Piston Rod Clevis

RE-MN-200



Mounting Nut

Switches and Cables

The table below outlines the switches that are compatible with the switch track option.

Part Number	Description
NMR	Reed, 24" Leads
NMRX	Reed, 144" Leads
NMRQ	Reed, M8 Quick Connect
NMRQC	Reed, M8 Quick Connect, with 2m cable
NMRQCX	Reed, M8 Quick Connect, with 5m cable
NMS	Autoconfigure, 24" Leads
NMSX	Autoconfigure, 144" Leads
NMSQ	Autoconfigure, M8 Quick Connect
NMSQC	Autoconfigure, M8 Quick Connect, with 2m cable
NMSQCX	Autoconfigure, M8 Quick Connect, with 5m cable
NMHF-90	Mini Switch, 2-wire, Solid-State Type, LED, 10-28VDC, 50mA, 24" Pigtail Leads, 90° version
NMHFX-90	Mini Switch, 2-wire, Solid-State Type, LED, 10-28VDC, 50mA, 144" Pigtail Leads, 90° version
NMHFQS-90	Mini Switch, 2-wire, Solid-State Type, LED, 10-28VDC, 50mA, with M8 Male Swivel Connector, 90° version
NMHFQCS-90	Mini Switch, 2-wire, Solid-State Type, LED, 10-28VDC, 50mA, with M8 Male Swivel Connector and 2m Mating Cable, 90° version
NMHQCXS-90	Mini Switch, 2-wire, Solid-State Type, LED, 10-28VDC, 50mA, with M8 Male Swivel Connector and 5m Mating Cable, 90° version
NMHC-90	Mini Switch Sourcing Switch (PNP), 3-wire, Solid-State Type, LED, 5-28VDC, 100mA, 24" Pigtail Leads, 90° version
NMHCX-90	Mini Switch Sourcing Switch (PNP), 3-wire, Solid-State Type, LED, 5-28VDC, 100mA, 144" Pigtail Leads, 90° version
NMHCQS-90	Mini Switch Sourcing Switch (PNP), 3-wire, Solid-State Type, LED, 5-28VDC, 100mA, with M8 Male Swivel Connector, 90° version
NMHCQCS-90	Mini Switch Sourcing Switch (PNP), 3-wire, Solid-State Type, LED, 5-28VDC, 100mA, with M8 Male Swivel Connector and 2m Mating Cable, 90° version
NMHCQXS-90	Mini Switch Sourcing Switch (PNP), 3-wire, Solid-State Type, LED, 5-28VDC, 100mA, with M8 Male Swivel Connector and 5m Mating Cable, 90° version
NMHK-90	Mini Switch Sinking Switch (NPN), 3-wire, Solid-State Type, LED, 5-28VDC, 100mA, 24" Pigtail Leads, 90° version
NMHKX-90	Mini Switch Sinking Switch (NPN), 3-wire, Solid-State Type, LED, 5-28VDC, 100mA, 144" Pigtail Leads, 90° version
NMHKQS-90	Mini Switch Sinking Switch (NPN), 3-wire, Solid-State Type, LED, 5-28VDC, 100mA, with M8 Male Swivel Connector, 90° version
NMHKQCS-90	Mini Switch Sinking Switch (NPN), 3-wire, Solid-State Type, LED, 5-28VDC, 100mA, with M8 Male Swivel Connector and 2m Mating Cable, 90° version
NMHKQXS-90	Mini Switch Sinking Switch (NPN), 3-wire, Solid-State Type, LED, 5-28VDC, 100mA, with M8 Male Swivel Connector and 5m Mating Cable, 90° version
NC4	Straight M8 Straight M8 Female Connector, Threaded Connection with 2 Meter Cable
NC4-S	Straight M8 Female Connector, Threaded Connection with 2 Meter Shielded Cable
NC4X	Straight M8 Female Connector, Threaded Connection with 5 Meter Cable
NC4X-S	Straight M8 Female Connector, Threaded Connection with 5 Meter Shielded Cable
NC5-S	Right Angle M8 Female Connector, Threaded Connection with 2 Meter Shielded Cable
NC5X-S	Right Angle M8 Female Connector, Threaded Connection with 5 Meter Shielded Cable

Warning

Improper selection, misuse, age or malfunction of components used in systems can cause failure in various modes. The system designer is warned to consider the failure modes of all component parts and to provide adequate safeguards to prevent personal injury or damage to equipment or property in the event of such failure modes. System designers and end users are cautioned to consult instruction sheets and specifications available from the factory. The system designer/end user is responsible for verifying that all requirements for the application are met.

Warranty

The products described herein are warranted subject to seller's Standard Terms and Condition of Sale, available at seller's website.

⚠ WARNING: This product can expose you to chemicals including lead, which is know to the State of California to cause cancer. For more information, go to www.p65warnings.ca.gov.