

# P84F 3/2 Soft Start/Dump Valve Excelon Plus Modular System



- > Port size: 3/8" to 3/4" (ISO G/PTF)
- > High flow dump facility
- > Excelon® Plus design allows in-line installation or modular installation with other Excelon® Plus products
- > Variable Snap Adjustment
- > High forward flow capacity
- > Fast Exhausting



## Technical features

### Medium:

Compressed air only

### Maximum supply pressure:

145 psi (10 bar)

### Minimum operating pressure:

43 psi (3 bar)

### Port size:

G3/8, G1/2, G3/4,  
3/8 PTF, 1/2 PTF, 3/4 PTF

### Flow:

108 scfm (51 dm<sup>3</sup>/s)  
at port size 1/2"  
Full flow P1 to P2 @ 91 psi  
(6.3 bar) inlet, with 7 psi  
(0.5 bar) pressure drop  
P2 to P3 = 138 scfm (65 dm<sup>3</sup>/s)

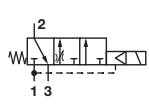
### Ambient/Media temperature:

-4 to +149°F (-20 to +65°C)  
Air supply must be dry  
enough to avoid ice  
formation at temperatures  
below +35°F (+2°C).

### Materials:

Body: Aluminum  
End Caps: Aluminum  
Body covers: ABS  
Elastomers: NBR  
Valve: Brass




## Technical data P84F

Symbol	Port Size (PTF)	Function	Voltage	Exhaust Port (PTF)	Weight lbs (g)	Model
	3/8	3/2 Soft Start	24 VDC	1/2	2.34 (1060)	P84F-3AT-PFA
	1/2	3/2 Soft Start	24 VDC	1/2	2.34 (1060)	P84F-4AT-PFA
	3/4	3/2 Soft Start	24 VDC	1/2	2.34 (1060)	P84F-6AT-PFA

## Electrical details for solenoid operators

<b>Voltage tolerance:</b>	-10%/+15%
<b>Rating:</b>	100% continuous duty
<b>Inlet orifice:</b>	0.8mm
<b>Electrical connection:</b>	15mm DIN EN 175301-803 (DIN 43 50) Table C
<b>Manual override:</b>	Shrouded push button, spring return
<b>Protection class:</b>	IP65 with sealed plug (ISO 6952) NEMA 4
<b>Materials:</b>	PP5 (body), NBR (seals)

## Voltage rating and spare coils

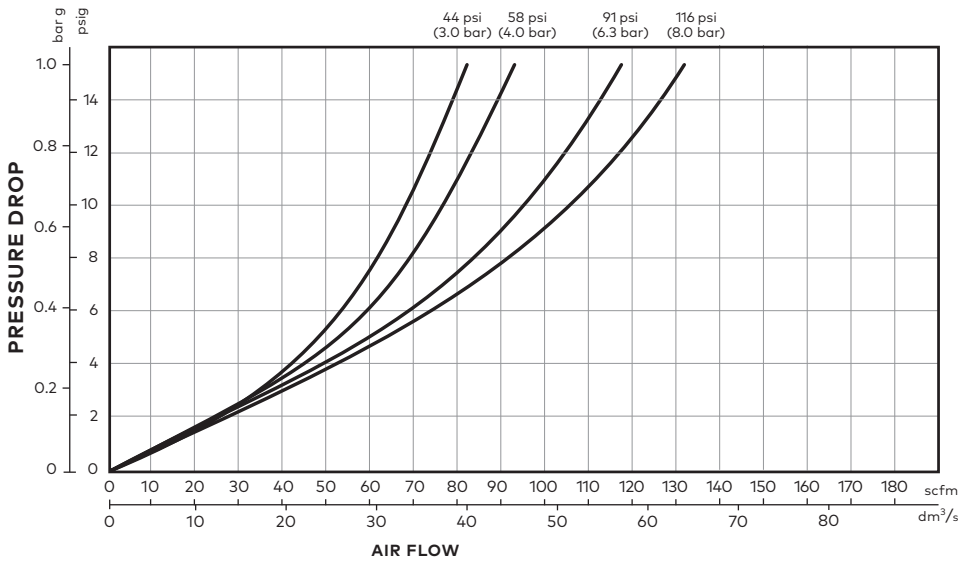
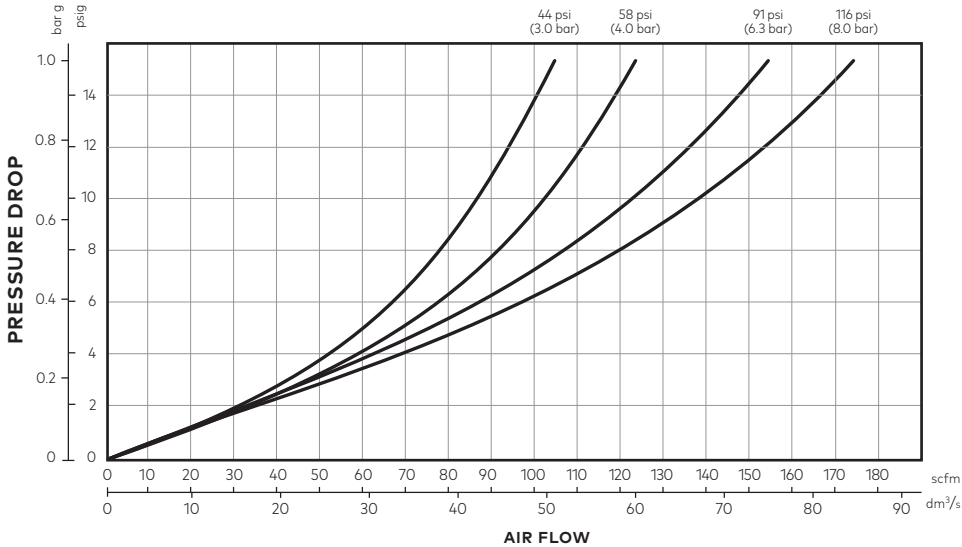
	Voltage	Power	Replacement
	24 VDC	1.2 W	840650-50KIT
	110 VAC	1.5 VA	840650-51KIT
	220 VAC	1.5 VA	840650-52KIT

**Option selector**

Function	Substitute
3/2 Soft Start	F
Port Size	Substitute
3/8"	3
1/2"	4
3/4"	6
Thread Form	Substitute
PTF	A
ISO G	G

**P84F-★ ★ T-P★ A**

Voltage	Substitute
24 VDC	F
110 VAC	A
220 VAC	B

**Flow characteristics**
**Port size: 3/8"**

**Port size: 1/2"**


## Accessories

**Quikclamp®**



840014-51KIT

**Quikclamp® with bracket assembled**



840014-52KIT

**Pressure sensing block 1/4 PTF**



840016-50KIT

**Pressure sensing block G1/4**



840016-51KIT

**Full flow porting block 3/4 PTF**



840028-50KIT

**Full flow porting block G3/4**



840028-53KIT

**Full flow porting block 3/4 PTF**



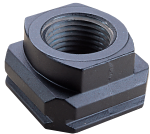
840028-68KIT

**Full flow porting block G3/4**



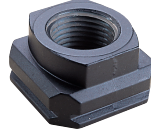
840028-69KIT

**Port Adaptors 3/8 PTF**



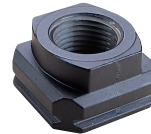
840015-02KIT

**Port Adaptors 1/2 PTF**



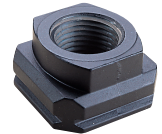
840015-03KIT

**Port Adaptors 3/4 PTF**



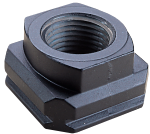
840015-04KIT

**Port Adaptors G3/8**



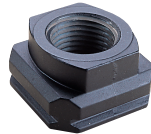
840015-10KIT

**Port Adaptors G1/2**



840015-11KIT

**Port Adaptors G3/4**



840015-12KIT

## Silencer

**Heavy duty muffler, 1/2" NPT male thread, brass wire element**



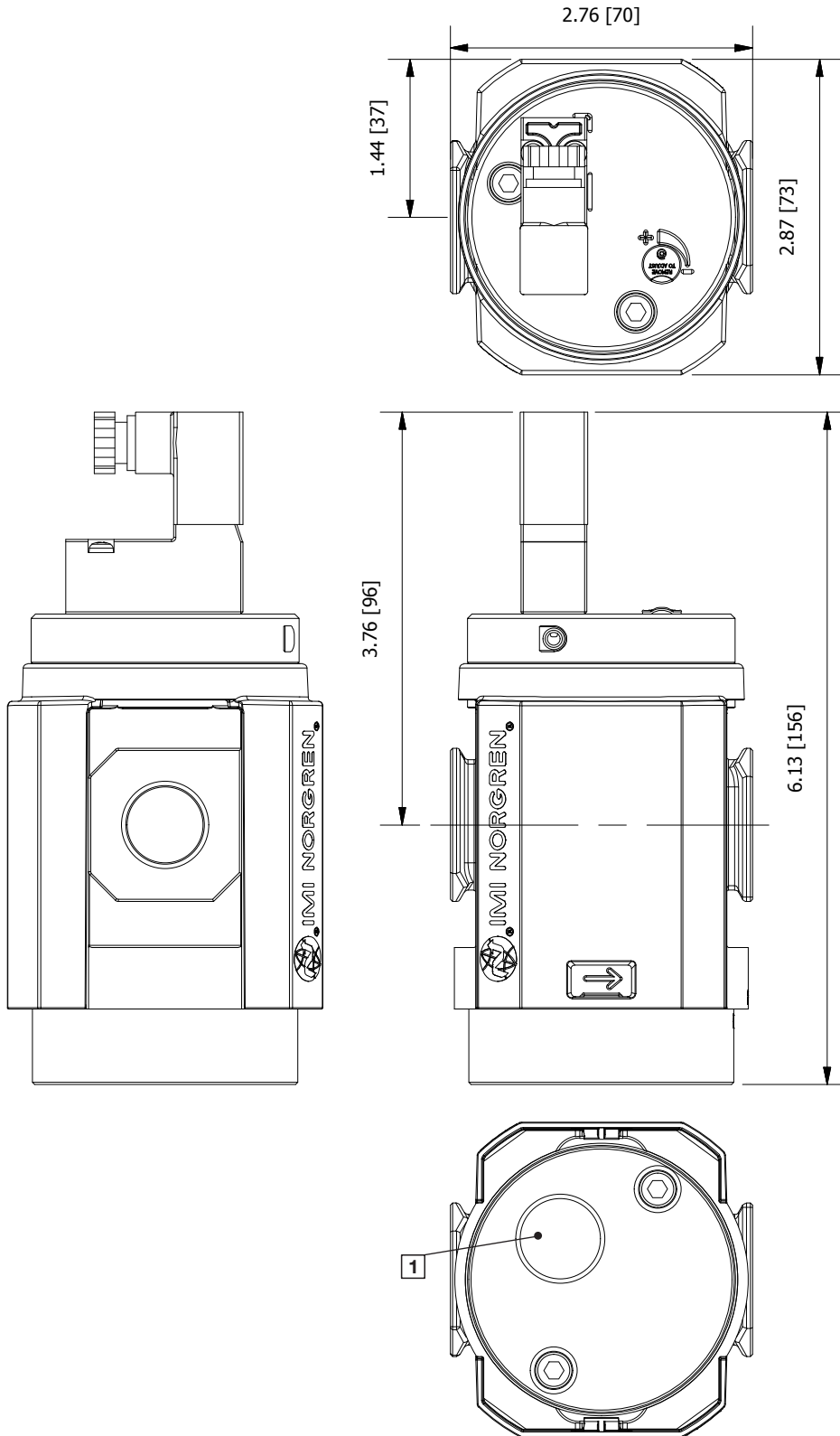
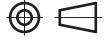
MB004A

**Heavy duty muffler, R1/2 male thread, brass wire element**



MB004B

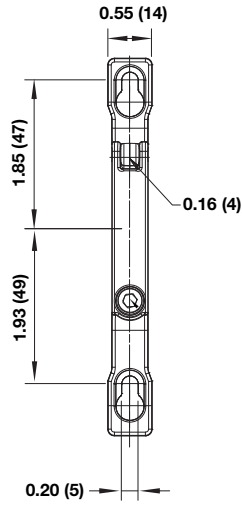
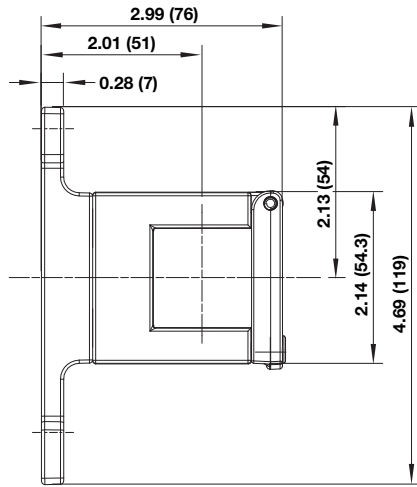
**Dimensions**

 Dimensions in inches (mm)  
 Projection/Third angle


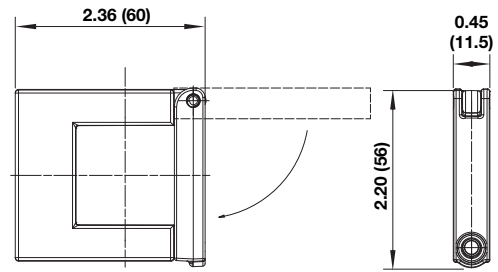
1 1/2" exhaust port (NPT or ISO G)

## Accessories

### Quikclamp® with wall bracket



### Quikclamp®



Dimensions in inches (mm)  
Projection/Third angle

