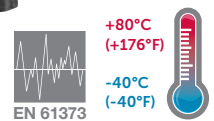


LR84G - Pressure regulator for Rail application Excelon® Plus Modular System

- Port size: 3/8" ... 3/4" (ISO G/PTF)
- Excelon® Plus design allows in-line installation or modular installation with other Excelon® Plus products
- Salt Spray compliant to ISO 9227 (500 hrs)
- Shock and vibration tested to EN61373 Category 2*
*(includes qualification category 1, class A and B)
- Fire & Smoke compliant to EN45545-2 (HL3) grouping rules*
* (for single units only, please consult our technical department regarding combinations of these units)

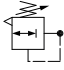


EN 61373

Technical features pressure regulator

Medium: Compressed air only	Port size: G3/8, G1/2, G3/4, 3/8 PTF, 1/2 PTF, 3/4 PTF	Ambient/Media temperature: Unit with gauge port without integrated gauge : -40 ... +80°C (-40 ... +176°F)	Materials: Body: Die cast aluminium Body covers: Magnum 3904 - High Impact covers Bonnet: Die cast Aluminium Valve: Brass and Low temperature Nitrile Elastomers: Low temperature Nitrile Diaphragm: Low temperature Silicone, polyester reinforced Lower spring rest and diaphragm retainer: Aluminium
Maximum supply pressure: 20 bar (290 psi)	Diaphragm Type: Relieving	Air supply must be dry enough to avoid ice formation at temperatures below +2°C (+35°F).Atex: Regulators LR84 are in conformity with Atex 2014/34/ EU Ex h IIC T6 Gb EX h IIIC T85°C Db	
Outlet pressure ranges: 0.3 ...10 bar (4 ... 145 psi), 0.3 ... 4 bar (4 ... 58 psi) optional,	Flow: 116 dm³/s at port size: 1/2", Inlet pressure 10 bar (145 psi), 6.3 bar (91 psi) set pressure and a Δp: 1 bar (14.5 psi) drop from set.		
Gauge: Gauge port as standard (Rc 1/8 or 1/8 PTF) Integrated gauge as option			

Technical data LR84G - standard models with gauge port Rc1/8 (without gauge)

Symbol	Port size	Pressure range (bar)	Adjustment	Integrated gauge (bar)	Weight (kg)	Model(*)
	G3/8	0.3 ... 10	T-bar	0 ... 10	0.75	LR84G-3GT-RMN
	G1/2	0.3 ... 10	T-bar	0 ... 10	0.75	LR84G-4GT-RMN
	G3/4	0.3 ... 10	T-bar	0 ... 10	0.73	LR84G-6GT-RMN

*) All models shown here are supplied with gauge port applicable for flow direction left to right.
With flow direction right to left please use the online configurator www.norgren.com/air-preparation-configurator or contact Norgren

Option selector *1)

LR84G-★★T-R★★

Port size	Substitute
3/8"	3
1/2"	4
3/4"	6
Thread form	Substitute
PTF	A
ISO G	G
Adjustment	Substitute
T-bar	T

Gauge	Substitute
Without integrated gauge but with gauge port 1/8"	N
With integrated gauge *3)	G
Pressure range *2)	Substitute
0.3 ... 4 bar	F
0.3 ... 10 bar (standard)	M

*1) All models shown here are applicable for flow direction left to right.
With flow direction right to left please use the online configurator
www.norgren.com/air-preparation-configurator or contact Norgren

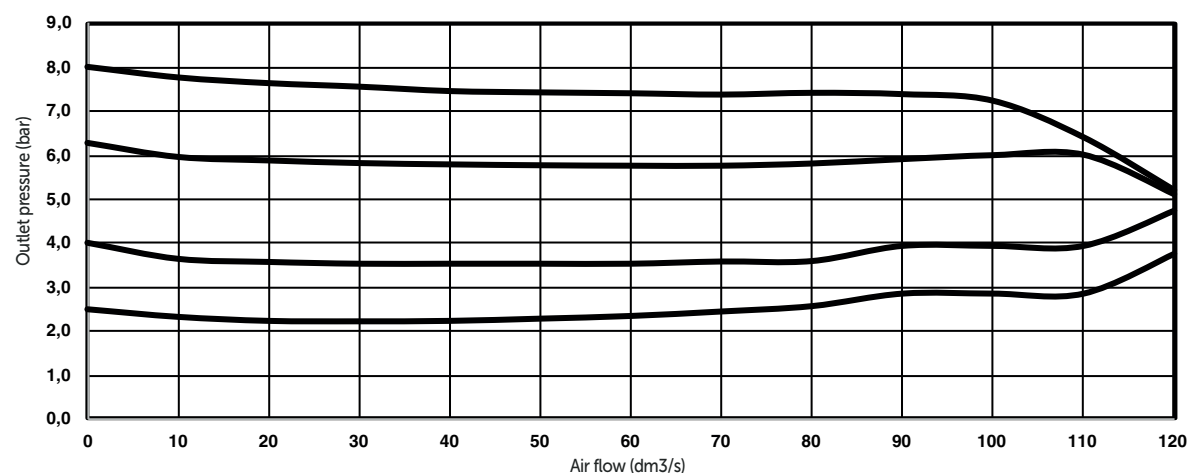
*2) Outlet pressure can be adjusted to pressures in excess of, and less than, those specified. Do not use these units to control pressures outside of the specified ranges.

*3) Attention : With integrated gauge temperature range of the unit changes to -20°C ... +65°C

Flow characteristics

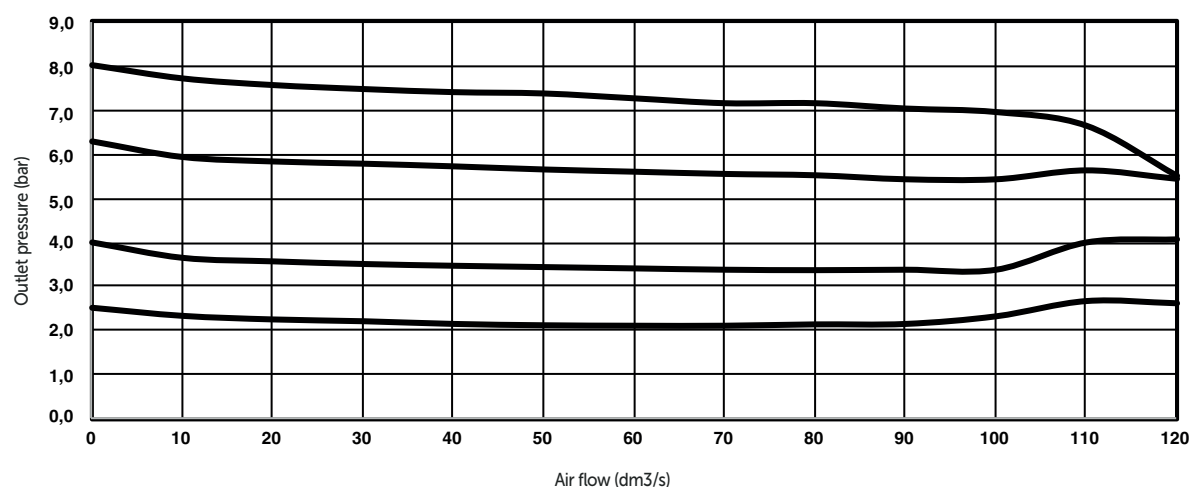
Inlet pressure: 10 bar (145 psi)

Port size: 1/2"



Inlet pressure: 10 bar (145 psi)

Port size: 3/8"



Accessories

Quickclamp®



Page 5

L840014-51KIT

Quickclamp® with bracket assembled



Page 5

L840014-52KIT

Neck mounting bracket and panel nut



Page 5

840068-51KIT

Panel mounting nut



Page 5

840048-89KIT

Mounting bracket



Page 5

840024-50KIT

Gauge adaptor kit
1/8 PTF



L840143-01KIT

Gauge adaptor kit
R 1/8



L840143-02KIT

Full flow porting block
horizontal, 3/4 PTF



Page 6

L840028-50KIT

Full flow porting block
horizontal, G3/4



Page 6

L840028-53KIT

Full flow porting block
vertical, 3/4"PTF



Page 6

L840028-68KIT

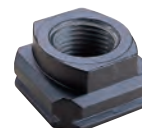
Full flow porting block
vertical, G3/4"



Page 6

L840028-69KIT

Port Adaptors



Page 6

3/8 PTF	L840015-02KIT
1/2 PTF	L840015-03KIT
3/4 PTF	L840015-04KIT
G3/8	L840015-10KIT
G1/2	L840015-11KIT
G3/4	L840015-12KIT

Pressure sensing block
1/4 PTF



Page 6

L840016-50KIT

Pressure sensing block
G1/4



Page 6

L840016-51KIT

Pressure switch interface block
(18D pressure switch) G1/4



Page 6

0337717000000000

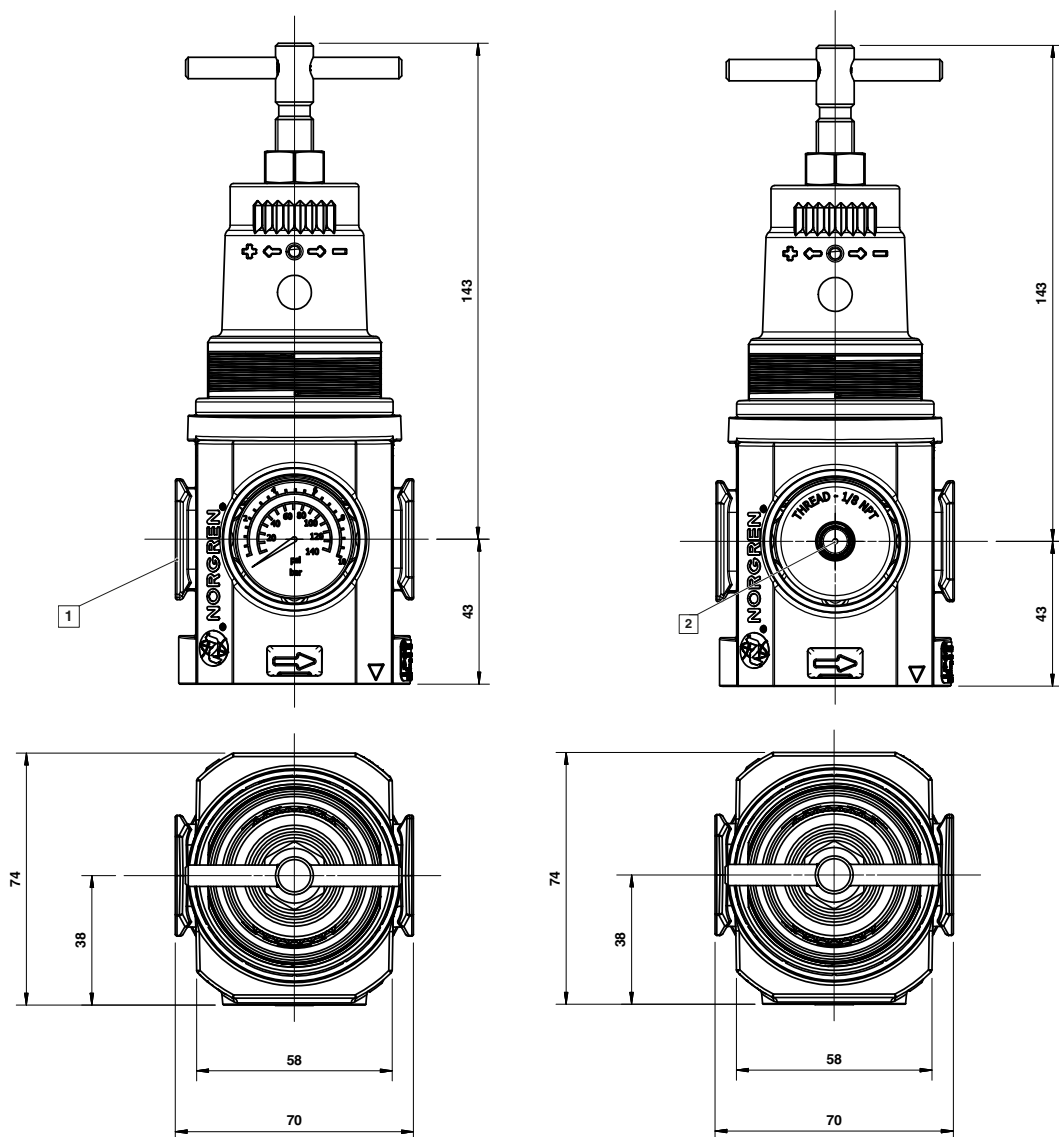
LR84 / LB84
Elastomer Kit



LFRLB84-KIT

Dimensions

Dimensions in mm
Projection/First angle



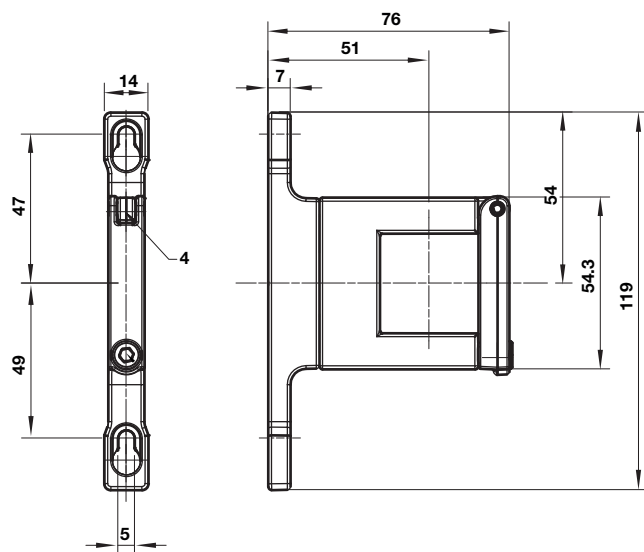
- 1 Main ports 3/8", 1/2" or 3/4"
(ISO G/PTF)
- 2 Gauge Port Rc 1/8 for ISO G and
1/8 PTF for PTF main ports

Accessories

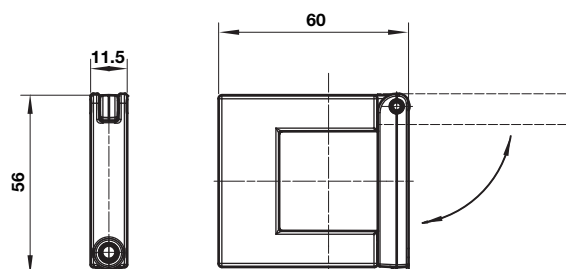
Dimensions in mm
Projection/First angle



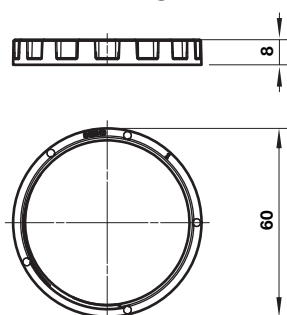
Quikclamp® with wall bracket



Quikclamp®

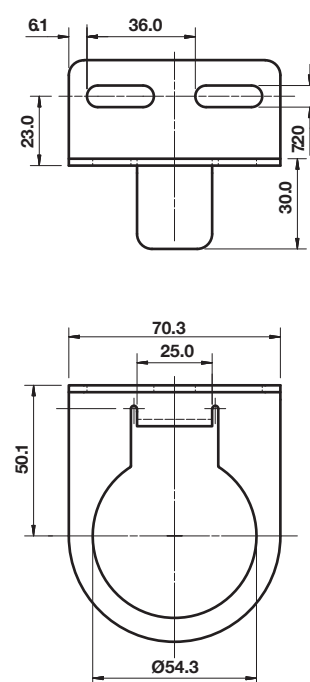


Panel mounting nut



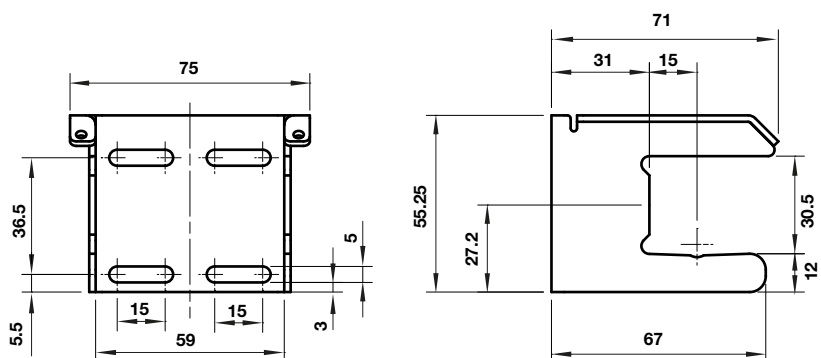
Recommended panel hole size:
ø 55 mm ... 57 mm
Panel thickness:
2 ... 6 mm

Neck mounting bracket



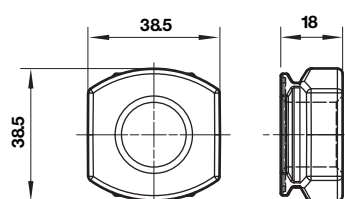
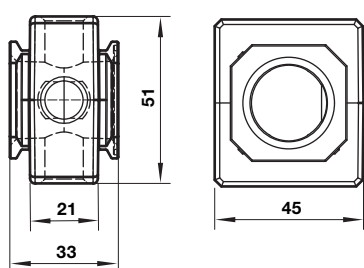
Mounting bracket

Dimensions in mm
Projection/First angle



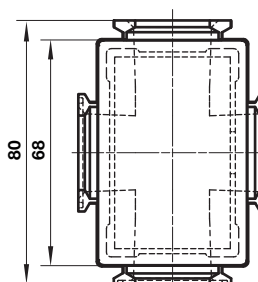
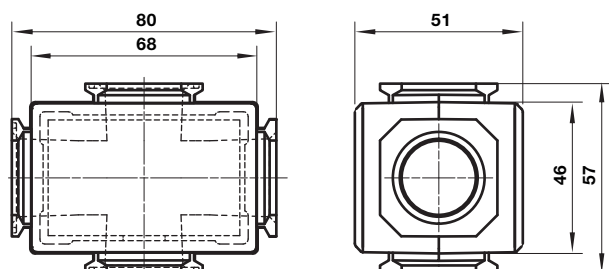
Pressure sensing block

Pipe adaptor

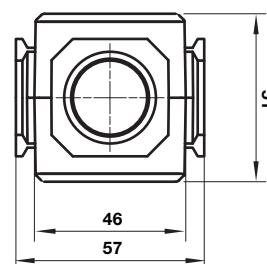
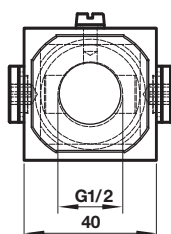
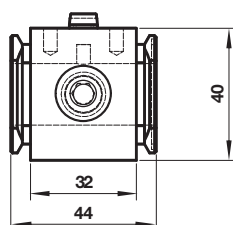


Full flow porting block horizontal

Full flow porting block vertical



Porting block for 18D pressure switch



Warning

These products are intended for use in industrial compressed air systems only. Do not use these products where pressures and temperatures can exceed those listed under »**Technical features/data**«. Before using these products with fluids other than those specified, for non-industrial applications, life-support systems or other applications not within published specifications, consult IMI Precision Engineering, Norgren Ltd.

Through misuse, age, or malfunction, components used in fluid power systems can fail in various modes. The system designer is warned to consider the failure modes of all component parts used in fluid power systems and to provide adequate safeguards to prevent personal injury or damage to equipment in the event of such failure.

System designers must provide a warning to end users in the system instructional manual if protection against a failure mode cannot be adequately provided.

System designers and end users are cautioned to review specific warnings found in instruction sheets packed and shipped with these products.