

F82G – General purpose filter Excelon® Plus Modular System

- Port size: 1/4" & 3/8" (ISO G/PTF)
- Excelon® Plus design allows in-line installation or modular installation with other Excelon® Plus products
- 5 or 40 micron particle and high efficiency water removal (> 95%)
- Double safety lock bowl
- Light weight polycarbonate bowl
- Metal bowl with prismatic liquid level indicator lens
- Air purity classes in accordance to ISO8573-1: particles class 6 & 7 and liquid water class 8



Technical features

Medium:

Compressed air only
Maximum supply pressure:
Polycarbonate bowl:
145 psi (10 bar)
Metal bowl: 246 psi (17 bar)

Filter element:

5 µm & 40 µm

Port size:

G1/4, G3/8, 1/4 PTF, 3/8 PTF

Drain:

Manual or automatic

Flow:

48 scfm (23 dm³/s) at port size 1/4",
58 scfm (27 dm³/s) at port size 3/8",
operating pressure 91 psi (6.3 bar)
and a Δp: 7.25 psi (0.5 bar) drop
from set. Filter element: 40 µm

Automatic drain operating conditions (float operated):

Bowl pressure required to close drain: > 5 psi (0.35 bar)
Bowl pressure required to open

drain: ≤ 2.9 psi (0.2 bar) Minimum
air flow required to close drain:
2 scfm (1dm³/s)



Ambient/Media temperature:

Polycarbonate bowl:
14 to +140°F (-10 to +60°C)
Metal bowl:
-4 to +149°F (-20 to +65°C)
Air supply must be dry enough
to avoid ice formation at
temperatures below +35°F (+2°C).

Materials:

Body: Die cast aluminum
Body covers: ABS
Bowl: Transparent PC with
PP guard or die cast zinc
Liquid level indicator
lens (metal bowl): PA
Filter element: sintered PP
Bowl "o"- ring: Chloroprene
Elastomers: NBR

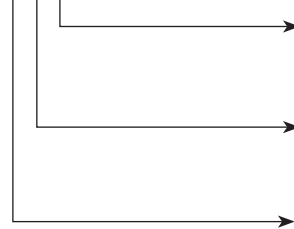
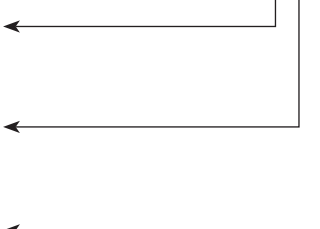
Technical data F82G—standard models

Symbol	Port Size (PTF)	Drain	Filter element (µm)	Bowl	Weight lb (kg)	Model *1)
	1/4	Auto	40	Guarded polycarbonate	0.48 (0.22)	F82G-2AN-AP3
	3/8	Auto	40	Guarded polycarbonate	0.48 (0.22)	F82G-3AN-AP3
	1/4	Auto	40	Metal with level indicator	0.90 (0.41)	F82G-2AN-AD3
	3/8	Auto	40	Metal with level indicator	0.90 (0.41)	F82G-3AN-AD3
	1/4	Manual	40	Guarded polycarbonate	0.44 (0.20)	F82G-2AN-QP3
	3/8	Manual	40	Guarded polycarbonate	0.44 (0.20)	F82G-3AN-QP3
	1/4	Manual	40	Metal with level indicator	0.88 (0.40)	F82G-2AN-QD3
	3/8	Manual	40	Metal with level indicator	0.88 (0.40)	F82G-3AN-QD3

Option selector

F82G-***-***

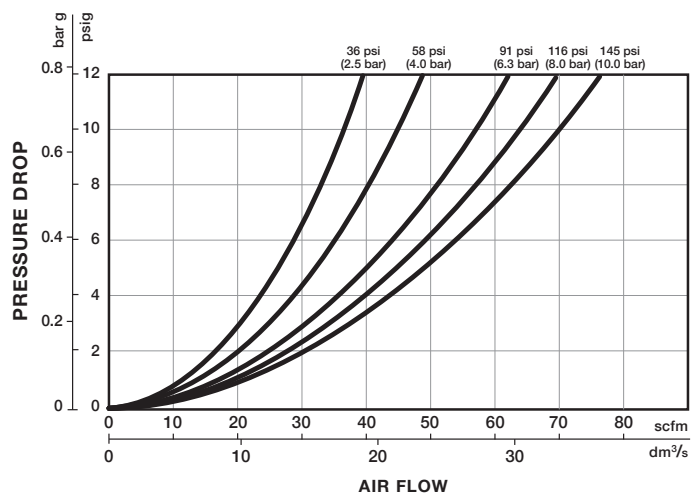
Port size	Substitute
1/4"	2
3/8"	3
Thread form	Substitute
PTF	A
ISO G	G
Differential Pressure Indicator	Substitute
With differential pressure indicator	D
Without differential pressure indicator	N



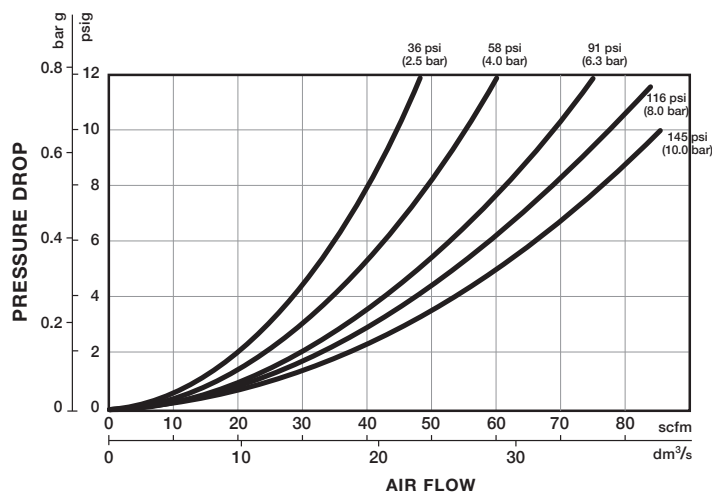
Element	Substitute
5 µm	1
40 µm	3
Bowl	Substitute
Transparent with guard	P
Metal with liquid indicator	D
Drain	Substitute
Manual	Q
Auto drain	A

Flow characteristics

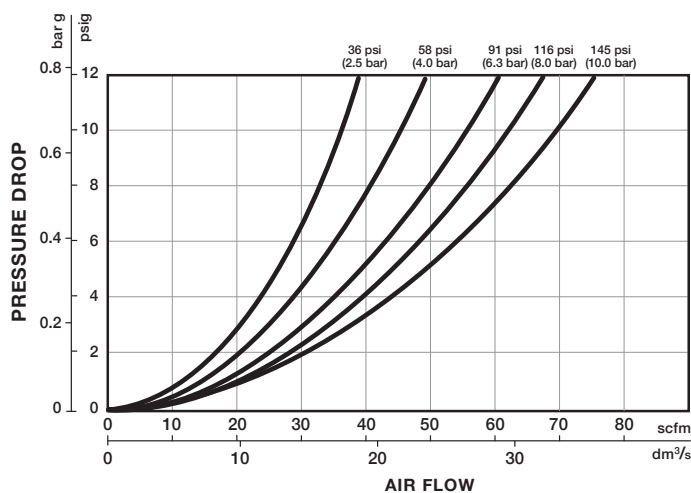
Port size: 1/4", 5 μ m



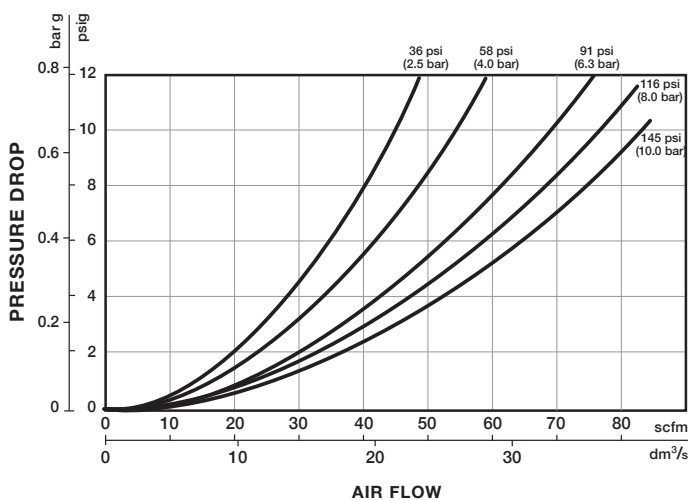
Port size: 3/8", 5 μ m



Port size: 1/4", 40 μ m



Port size: 3/8", 40 μ m



Accessories

Wall mounting bracket  page 7 820024-50KIT	Quikclamp®  page 7 820014-51KIT	Quikclamp® with bracket assembled  page 7 820014-52KIT	Pressure sensing block 1/4 PTF  page 7 820016-50KIT	Pressure sensing block G1/4  page 7 820016-51KIT
Full flow porting block 3/8 PTF  page 7 820028-50KIT	Full flow porting block G3/8  page 7 820028-53KIT	Pressure switch interface block (18D pressure switch)  page 8 0523109000000000	Pneumatic pressure switch 18D (7 to 120 psi)  page 8 0881300000000000	Digital pressure switch 54D (-14.5 to 145 psi)  page 9 54D-V110G-DD0-AA
Port Adaptors 1/4 PTF  page 8 820015-02KIT	Port Adaptors 3/8 PTF  page 8 820015-03KIT	Port Adaptors G1/4  page 8 820015-08KIT	Port Adaptors G3/8  page 8 820015-09KIT	

Maintenance/Service

Filter cartridge
5 micron



820038-50KIT

Filter cartridge
40 micron



820038-51KIT

Auto drain kit with
metal Nut - Imperial



6000-61KIT

Auto drain kit with
metal Nut - Metric



6000-60KIT

Spare parts

Filter Bowl
(Guarded Poly bowl with
auto drain 6 mm PIF)



820025-51KIT

Filter Bowl
(Guarded Poly bowl
with manual drain)



820025-50KIT

Filter Bowl
(Metal with S/Glass
& auto drain, 6 mm PIF)



820003-51KIT

Filter Bowl
(Metal with S/Glass
& manual drain)



820003-50KIT

Filter Bowl
(Guarded Poly bowl
with auto drain, 1/4 PIF)



820025-53KIT

Filter Bowl
(Metal with S/Glass
& auto drain, 1/4 PIF)

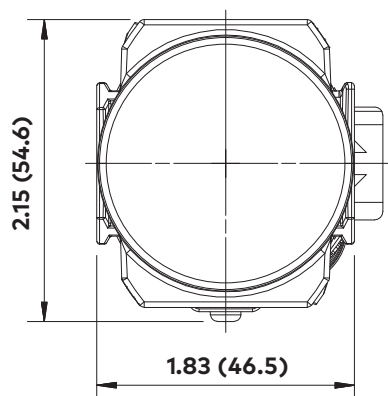


820003-56KIT

Dimensions

Dimensions in inches (mm)

Projection/Third angle

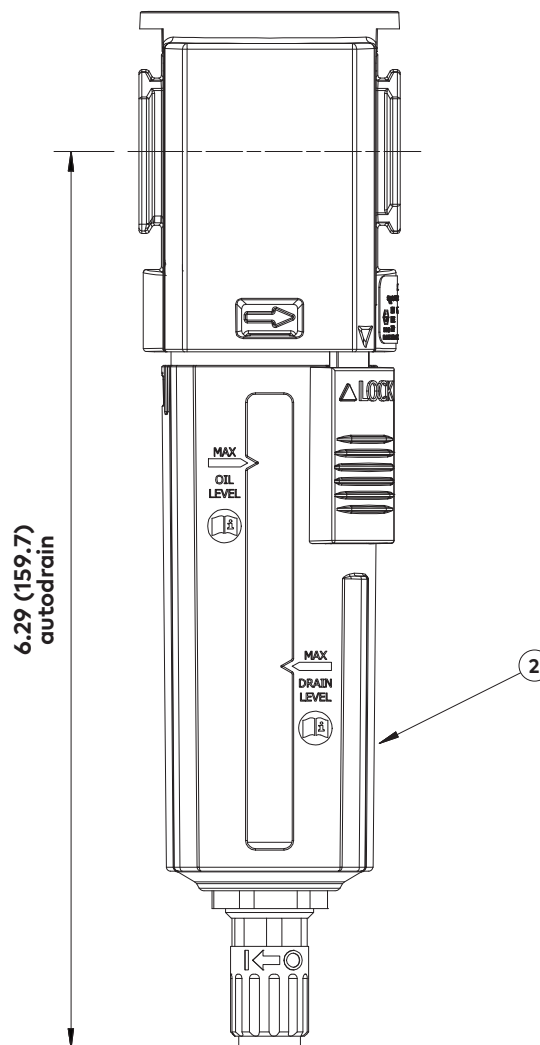
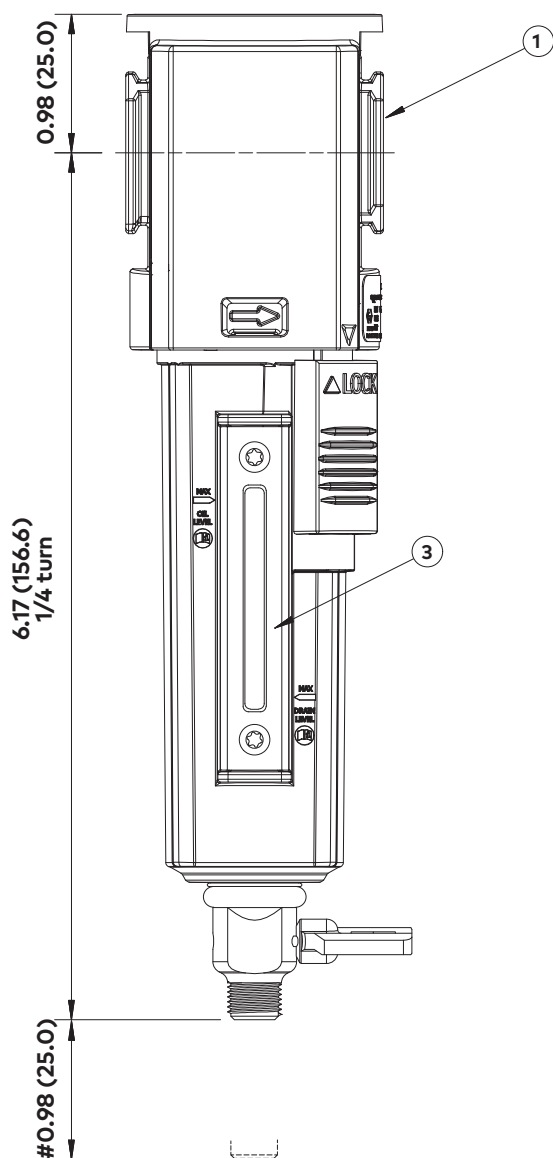


Minimum clearance for bowl removal

1 Main ports 1/4", 3/8" (ISO G/PTF)

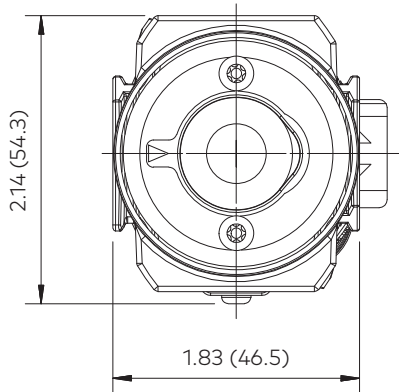
2 Transparent bowl with guard

3 Metal bowl with liquid level indicator lens



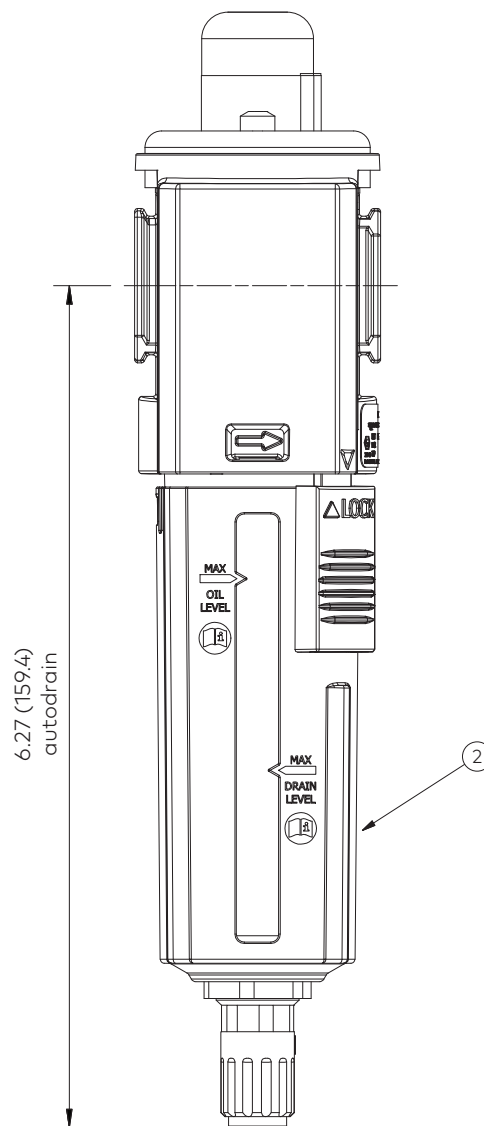
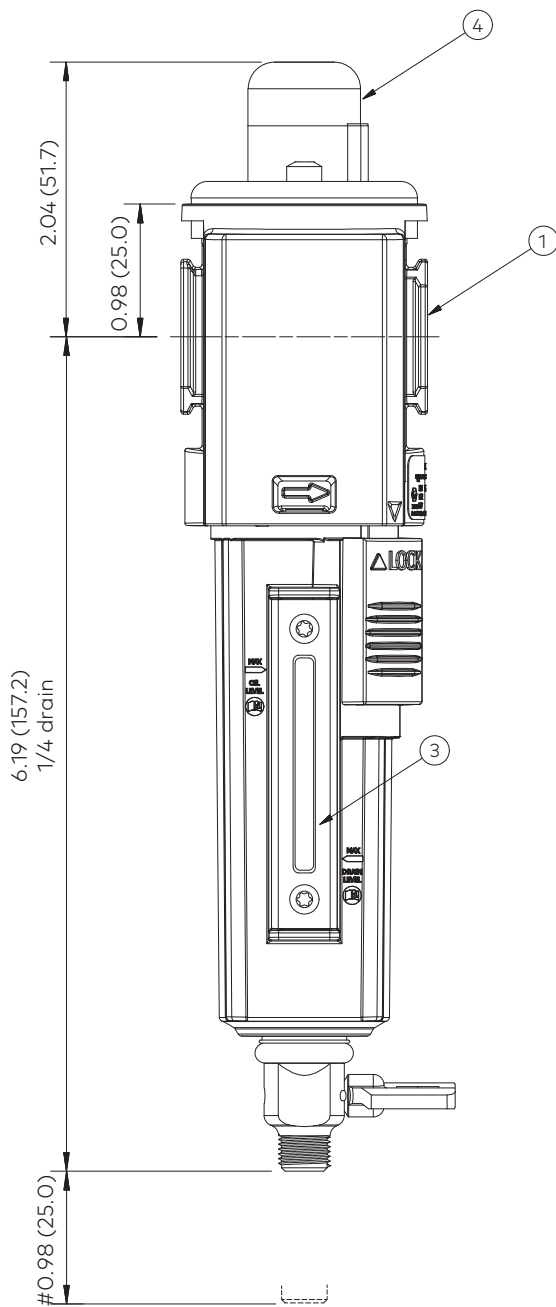
Dimensions

Dimensions in inches (mm)
Projection/Third angle



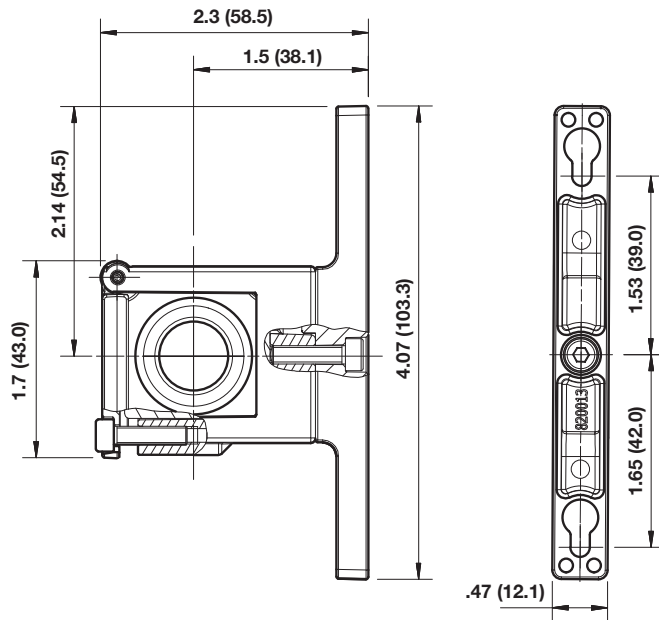
Minimum clearance for bowl removal

- 1 Main ports 1/4", 3/8" (ISO G/PTF)
- 2 Transparent bowl with guard
- 3 Metal bowl with liquid level indicator lens
- 4 Service indicator

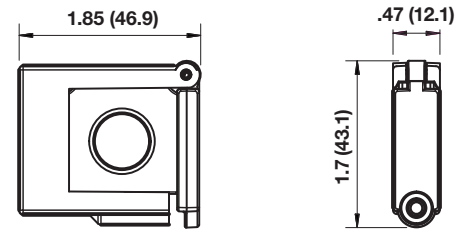


Accessories

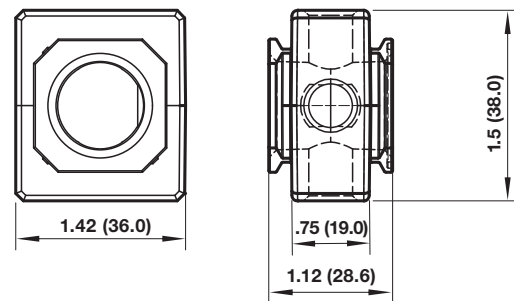
Quikclamp® with wall bracket



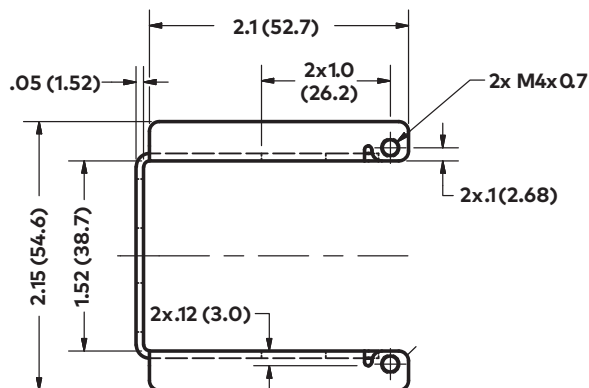
Quikclamp®



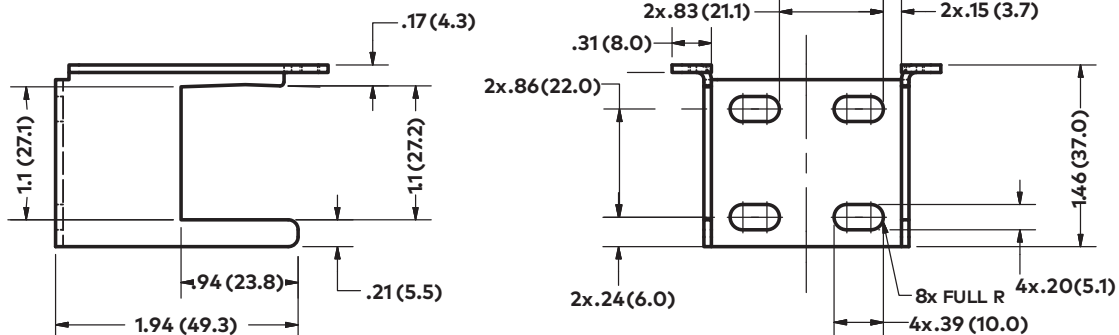
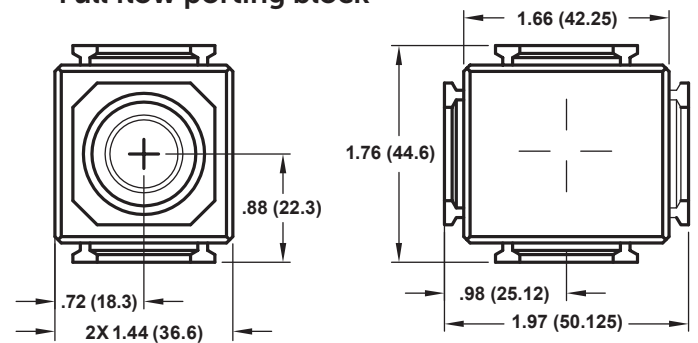
Pressure sensing block

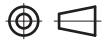


Mounting bracket

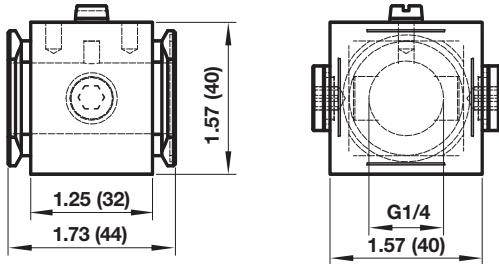


Full flow porting block

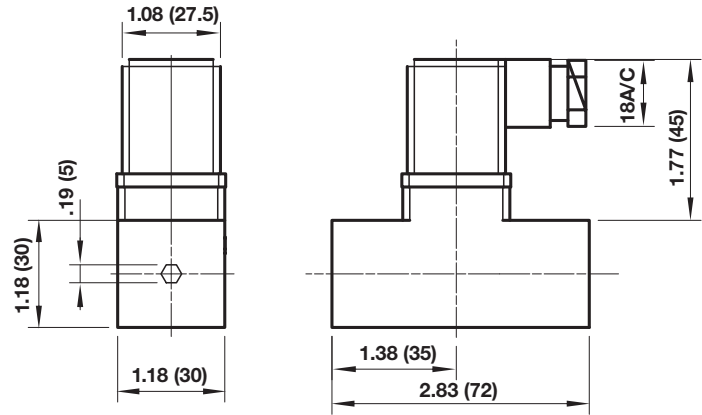




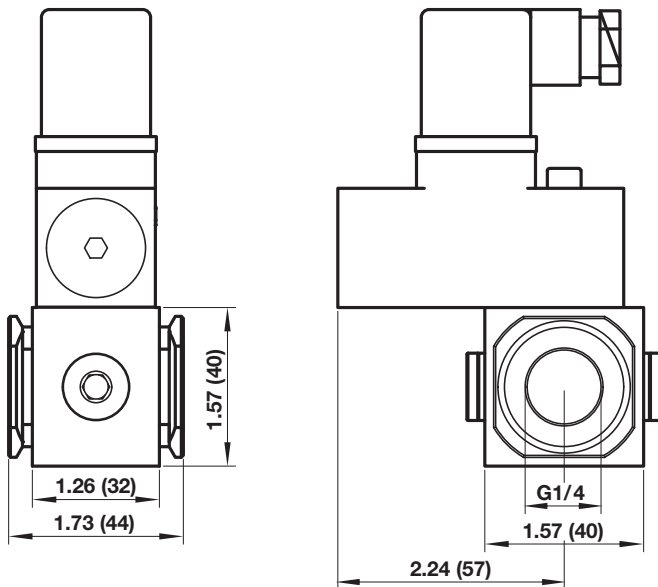
Porting block for 18D pressure switch



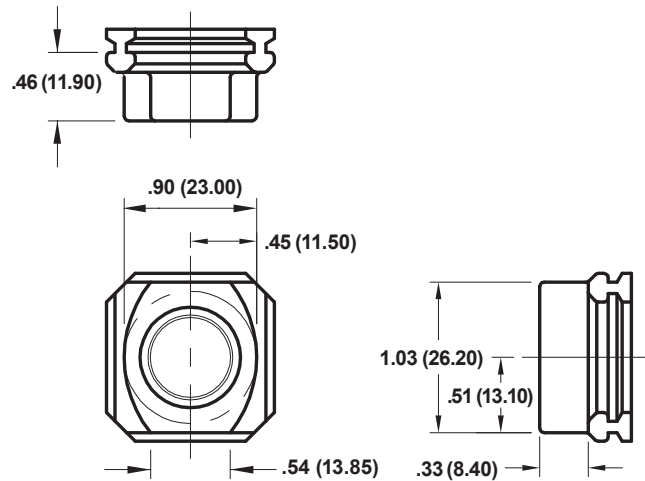
18D Pressure switch



18D Porting block and 18D assembled

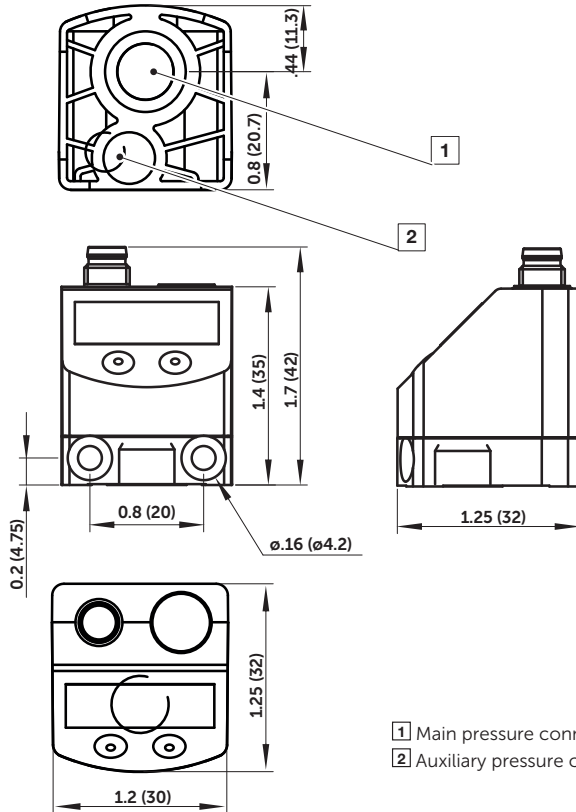


Pipe adaptor





54D Pressure switch - digital



- 1 Main pressure connection (PTF 1/8)
- 2 Auxiliary pressure connection for differential pressure sensing (M5)

Warning

These products are intended for use in industrial compressed air systems only. Do not use these products where pressures and temperatures can exceed those listed under »Technical features/data«. Before using these products with fluids other than those specified, for non-industrial applications, life-support systems or other applications not within published specifications, consult IMI Precision Engineering, Norgren Ltd.

Through misuse, age, or malfunction, components used in fluid power systems can fail in various modes. The system designer is warned to consider the failure

modes of all component parts used in fluid power systems and to provide adequate safeguards to prevent personal injury or damage to equipment in the event of such failure.

System designers must provide a warning to end users in the system instructional manual if protection against a failure mode cannot be adequately provided. System designers and end users are cautioned to review specific warnings found in instruction sheets packed and shipped with these products.