

## F82V - Oil vapor removal filters Excelon® Plus Modular System

- Port size: 1/4" & 3/8" (ISO G/PTF)
- Excelon® Plus design allows in-line installation or modular installation with other Excelon® Plus products
- Adsorbing type activated carbon element removes oil vapors and most hydrocarbon odors
- Double safety lock bowl
- Light weight Polycarbonate bowl
- Metal bowl with prismatic lens
- Air purity class in accordance with ISO 8573-1: Remaining oil aerosol to class 0\*

\* Tested in accordance with the methods laid out in ISO 12500-2 using an inlet oil aerosol concentration of 0.018mg/m<sup>3</sup>



### Technical features

#### Medium:

Compressed air only

#### Maximum operating pressure:

Polycarbonate bowl: 145 psi (10 bar)

Metal bowl: 246 psi (17 bar)

Remaining oil content:

0.003 mg/m<sup>3</sup> max. at +69°F (+21°C)

#### Port size:

G1/4, G3/8, 1/4 PTF, 3/8 PTF

#### Dry Element Flow:

40 scfm

operating pressure: 91 psi (6.3 bar)  
and a Δp: 7.25 psi (0.5 bar) drop from set.

#### Ambient/Media temperature:

-4 ... +149°F (-20 ... +65°C)

Air supply must be dry enough to avoid ice formation at temperatures below +35°F (+2°C).

#### Note:

Install an F82C coalescing filter upstream of the F82V filter for maximum service life.

#### Materials:

Body: Die cast aluminium

Body covers: ABS

Bowl: Transparent PC with PP guard or die cast zinc Bowl

"o"- ring: Chloroprene

Elastomers: NBR

### Technical data F82V

Symbol	Port Size (PTF)	Drain	Filter element	Bowl	Weight lb (kg)	Model
	1/4	Closed bowl	Vapor removal	Guarded polycarbonate	0.48 (0.21)	F82V-2AN-EPA
	3/8	Closed bowl	Vapor removal	Guarded polycarbonate	0.44 (0.20)	F82V-3AN-EPA
	1/4	Closed bowl	Vapor removal	Metal bowl - no sight glass	0.88 (0.40)	F82V-2AN-EDA
	3/8	Closed bowl	Vapor removal	Metal bowl - no sight glass	0.88 (0.40)	F82V-3AN-EDA

### Option selector

F82V- ★ ★ N - E ★ A

Port size	Substitute
1/4"	2
3/8"	3

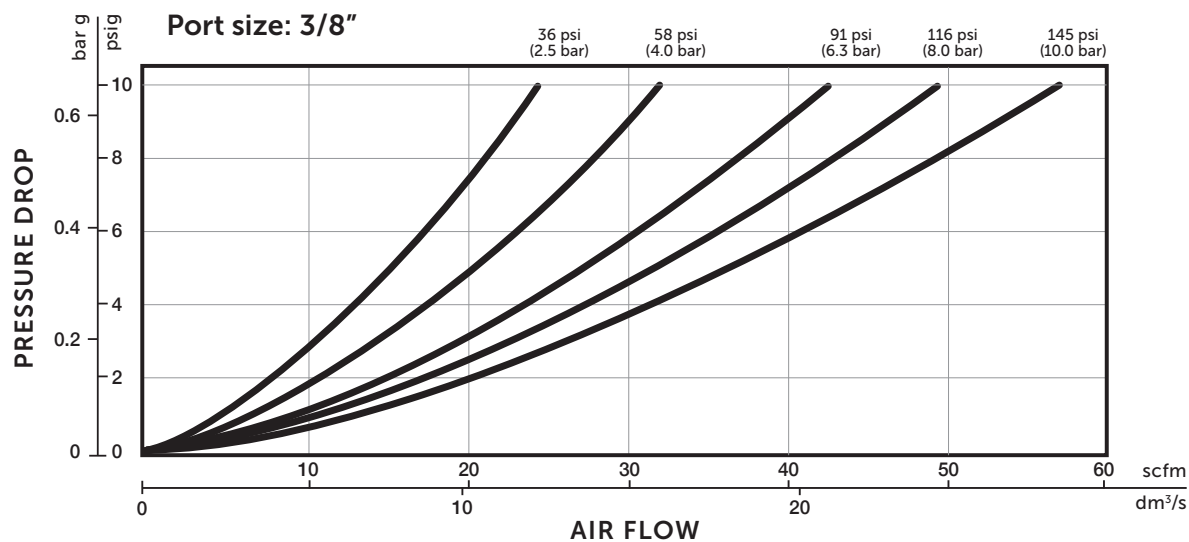
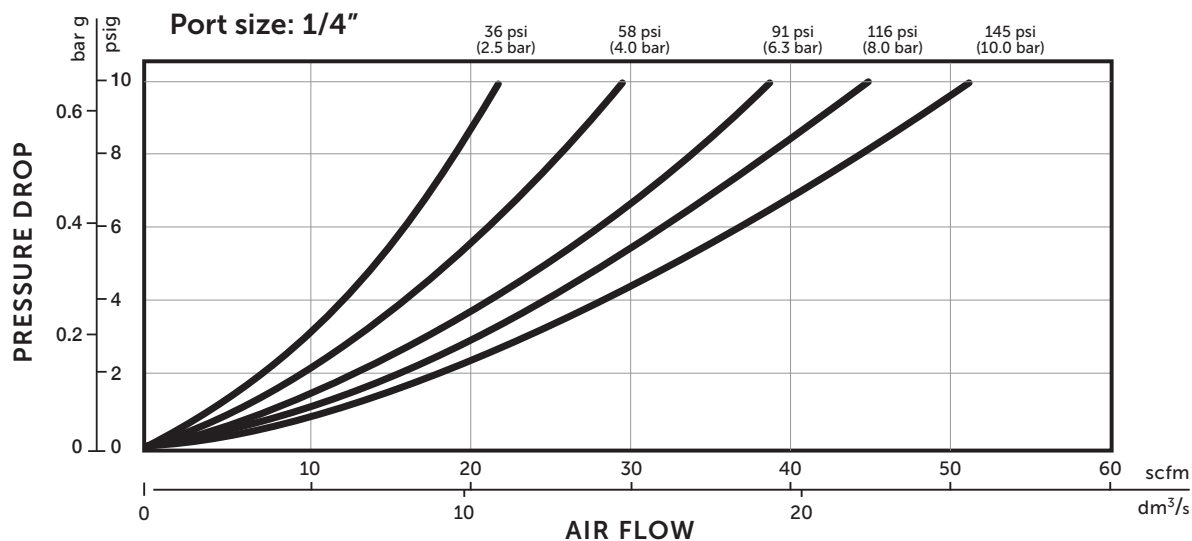
Bowl	Substitute
Metal	D
Transparent with guard	P
Thread form	Substitute
PTF	A
ISO G	G

## Flow characteristics

### Vapor Removal Flow

Inlet Pressure psi (bar)	Flow-rate to maintain media velocity of ISO12500-1 test on oil vapor filter (L/sec)
36 (2.5)	1.9
58 (4)	2.8
91 (6.3)	4
116 (8)	5
145 (10)	6.1


### Dry Flow



## Accessories

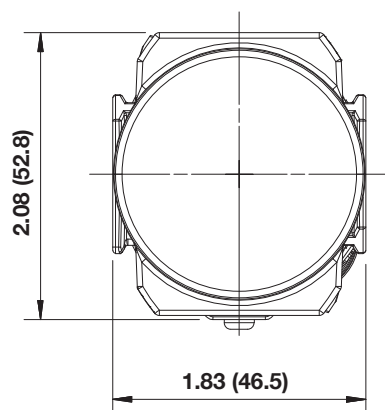
<b>Wall mounting bracket</b>  <b>page 4</b> 820024-50KIT	<b>Quikclamp®</b>  <b>page 4</b> 820014-51KIT	<b>Quikclamp® with bracket assembled</b>  <b>page 4</b> 820014-52KIT	<b>Pressure sensing block 1/4 PTF</b>  <b>page 4</b> 820016-50KIT	<b>Pressure sensing block G1/4</b>  <b>page 4</b> 820016-51KIT
<b>Full flow porting block 3/8 PTF</b>  <b>page 4</b> 820028-50KIT	<b>Full flow porting block G3/8</b>  <b>page 4</b> 820028-53KIT	<b>Pressure switch interface block (18D pressure switch)</b>  <b>page 5</b> 0523109000000000	<b>Pneumatic pressure switch 18D (7 to 120 psi)</b>  <b>page 5</b> 0881300000000000	<b>Digital pressure switch 54D (-14.5 to 145 psi)</b>  <b>page 6</b> 54D-V110G-DD0-AA
<b>Port Adaptors 1/4 PTF</b>  <b>page 5</b> 820015-02KIT	<b>Port Adaptors 3/8 PTF</b>  <b>page 5</b> 820015-03KIT	<b>Port Adaptors G1/4</b>  <b>page 5</b> 820015-08KIT	<b>Port Adaptors G3/8</b>  <b>page 5</b> 820015-09KIT	

## Maintenance/Service

<b>Vapor Removal filter element</b>  820041-50KIT
--

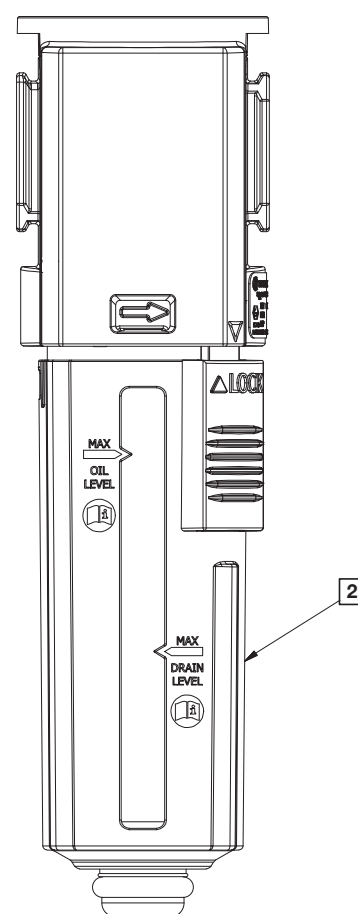
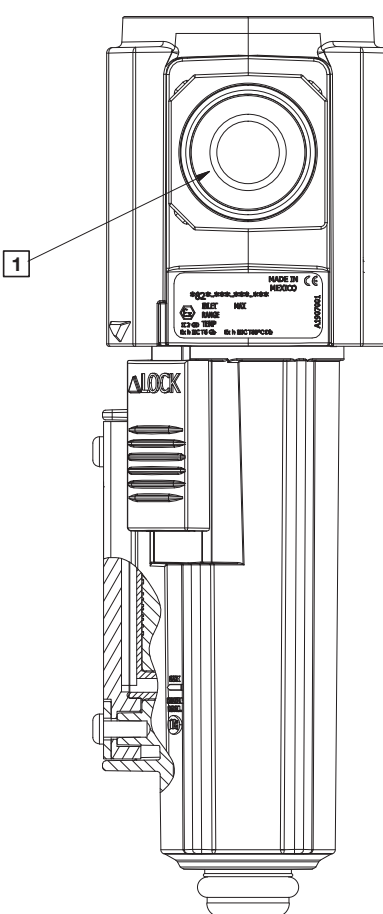
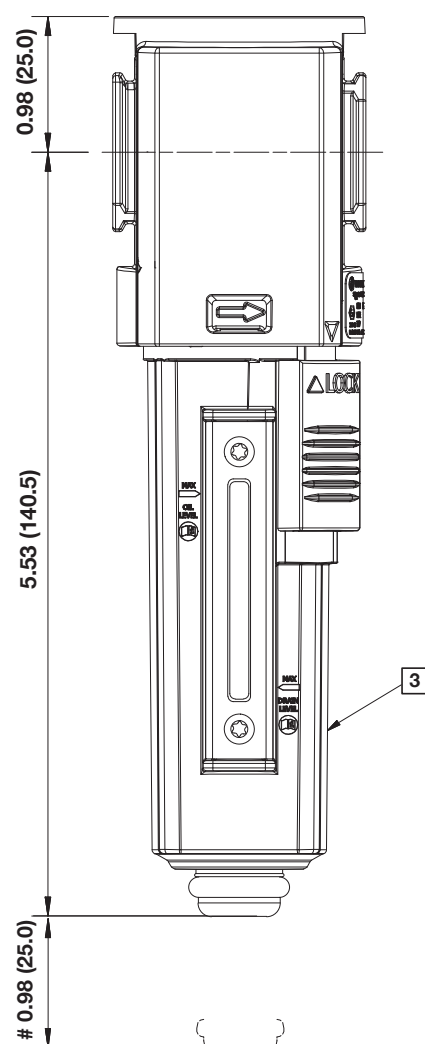


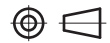
## Dimensions



# Minimum clearance for bowl removal

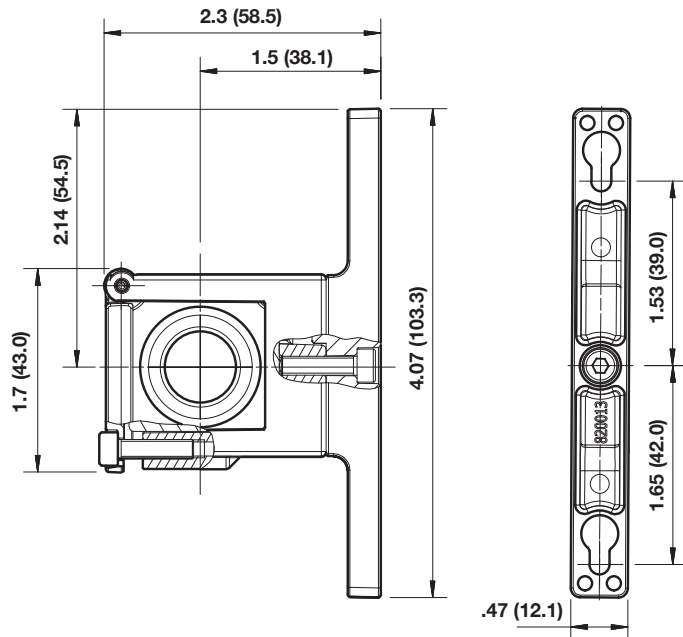
- 1 Main ports 1/4", 3/8" (ISO G/PTF)
- 2 Transparent bowl with guard
- 3 Metal bowl



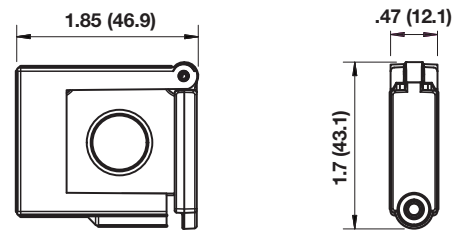


## Accessories

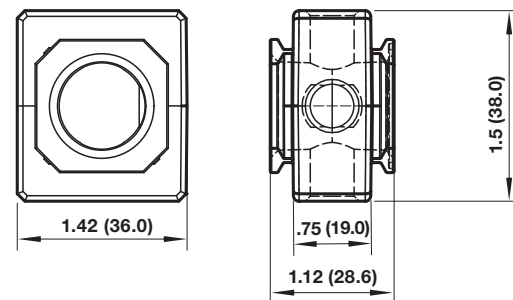
### Quikclamp® with wall bracket



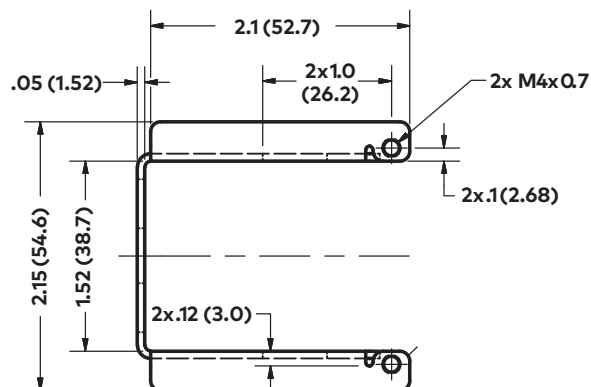
### Quikclamp®



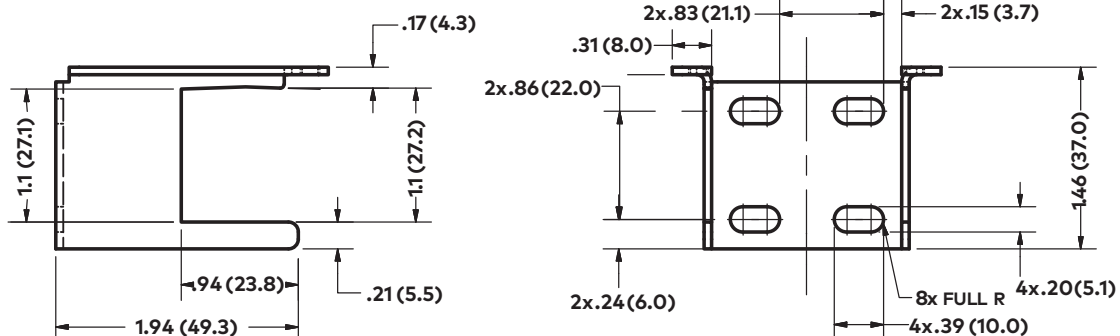
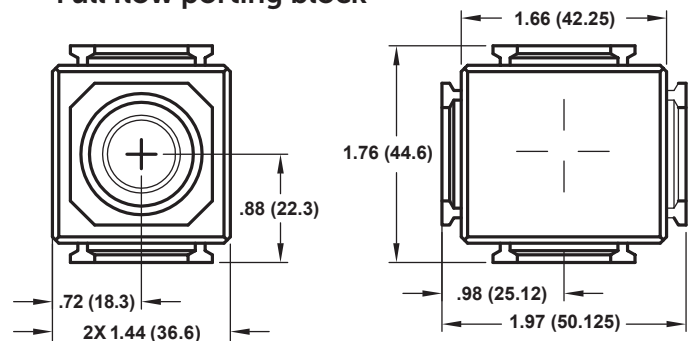
### Pressure sensing block

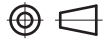


### Mounting bracket

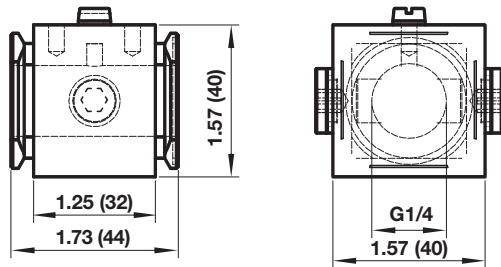


### Full flow porting block

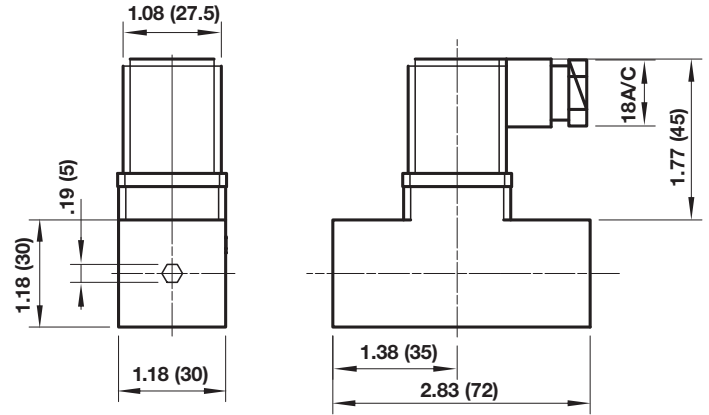




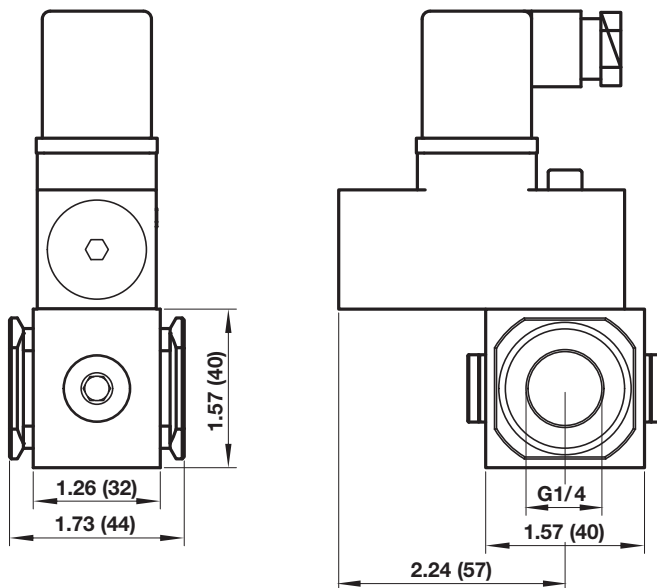
Porting block for 18D pressure switch



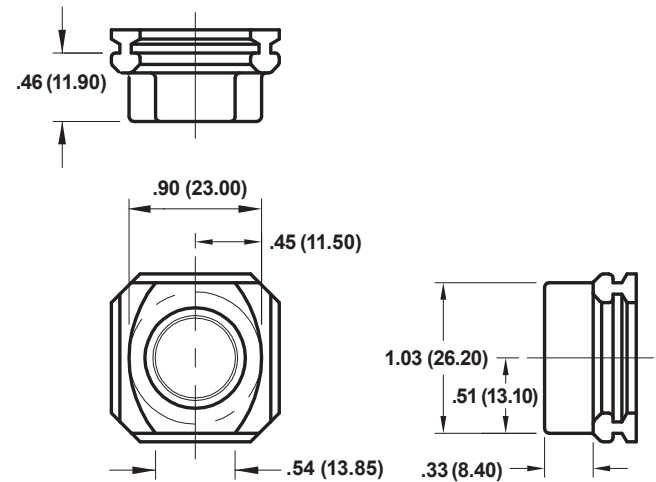
18D Pressure switch



18D Porting block and 18D assembled

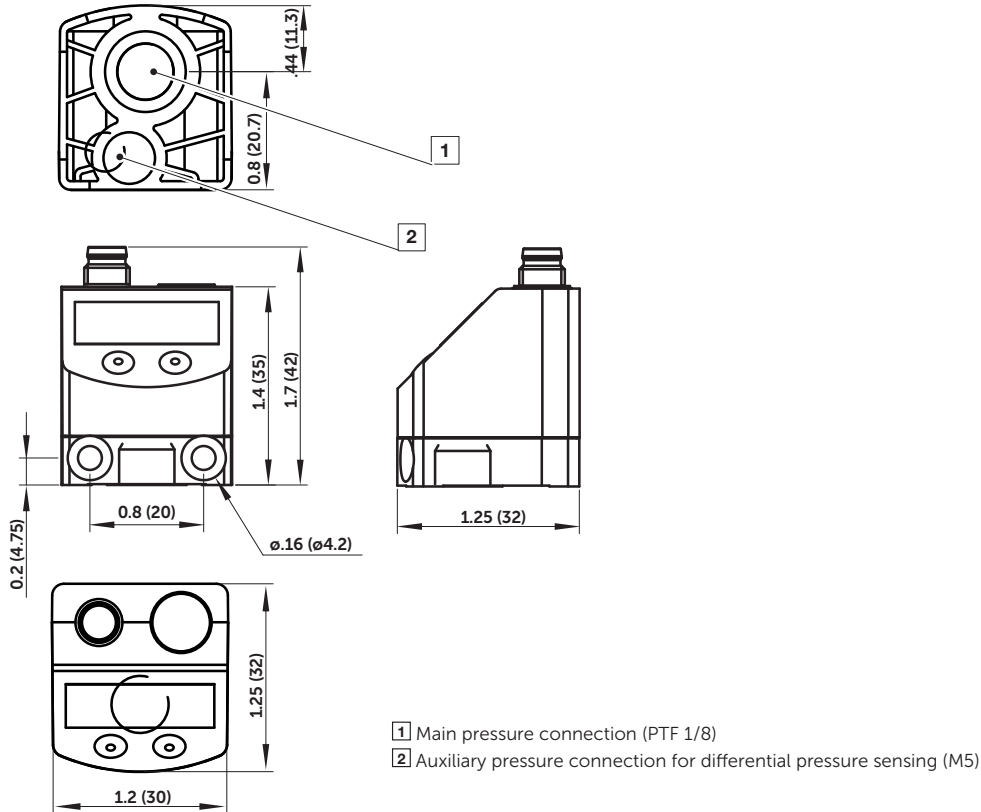


Pipe adaptor





## 54D Pressure switch - digital



## Warning

These products are intended for use in industrial compressed air systems only. Do not use these products where pressures and temperatures can exceed those listed under »Technical features/ data«. Before using these products with fluids other than those specified, for non-industrial applications, life-support systems or other applications not within published specifications, consult IMI Precision Engineering, Norgren Ltd.

Through misuse, age, or malfunction, components used in fluid power systems can fail in various modes. The system designer is warned to consider the failure modes of all component parts used in fluid power systems and to provide adequate safeguards to prevent personal injury or damage to equipment in the event of such failure.

System designers must provide a warning to end users in the system instructional manual if protection against a failure mode cannot be adequately provided. System designers and end users are cautioned to review specific warnings found in instruction sheets packed and shipped with these products.