

L82M, L82C Micro Fog and Oil Fog Lubricators Excelon® Plus Modular System

- Port size: 1/4" & 3/8" (ISO G/PTF)
- Excelon® Plus design allows in-line installation or modular installation with other Excelon® Plus products
- Flow sensor provides a nearly constant oil/air ratio over a wide range of flows
- Double safety lock bowl
- Metal bowl with prismatic liquid level indicator lens
- Light weight Polycarbonate bowl
- All round (360°) visibility of sightdome for ease of drip rate setting
- Choice of two oil delivery systems



Technical features

Medium:

Compressed air only
Maximum operating pressure:
Polycarbonate bowl: 145 psi (10 bar)
Metal bowl: 246 psi (17 bar)

Port size:

G1/4, G3/8, 1/4 PTF, 3/8 PTF

Flow:

L82C: 55 scfm (26 dm³/s) at port size 1/4"
L82C: 51 scfm (24 dm³/s) at port size 3/8"
L82M: 46 scfm (22 dm³/s) at port size 1/4"
L82M: 45 scfm (21 dm³/s) at port size 3/8"
operating pressure: 91 psi (6.3 bar) and a Δp:
7.25 psi (0.5 bar) drop from set.

Start point:

1 scfm (0.5 dm³/s) for Oil Fog
2.5 scfm (1.2 dm³/s) for Micro Fog


Ambient/Media temperature:

Polycarbonate bowl:
14 to +140°F (-10 to +60°C)
Metal bowl:
-4 to +149°F (-20 to +65°C)
Air supply must be dry enough
to avoid ice formation at
temperatures below +35°F (+2°C)

Materials:

Body: Die cast aluminum
Body cover: ABS
Bowl: Transparent PC with PP
guard or die cast zinc
Liquid level indicator lens
(metal bowl): PA
Sightdome: Transparent PA
Bowl "o"- ring: Chloroprene
Elastomers: NBR

Technical data L82—standard models

Symbol	Port Size (PTF)	Lubricator type	Bowl	Weight lb (kg)	Model
	1/4	Micro fog	Guarded polycarbonate	0.48 (0.22)	L82M-2AP-EPN
	3/8	Micro fog	Guarded polycarbonate	0.48 (0.22)	L82M-3AP-EPN
	1/4	Micro fog	Metal with level indicator	0.88 (0.40)	L82M-2AP-EDN
	3/8	Micro fog	Metal with level indicator	0.88 (0.40)	L82M-3AP-EDN
	1/4	Oil fog	Guarded polycarbonate	0.48 (0.22)	L82C-2AP-EPN
	3/8	Oil fog	Guarded polycarbonate	0.48 (0.22)	L82C-3AP-EPN
	1/4	Oil fog	Metal with level indicator	0.88 (0.40)	L82C-2AP-EDN
	3/8	Oil fog	Metal with level indicator	0.88 (0.40)	L82C-3AP-EDN

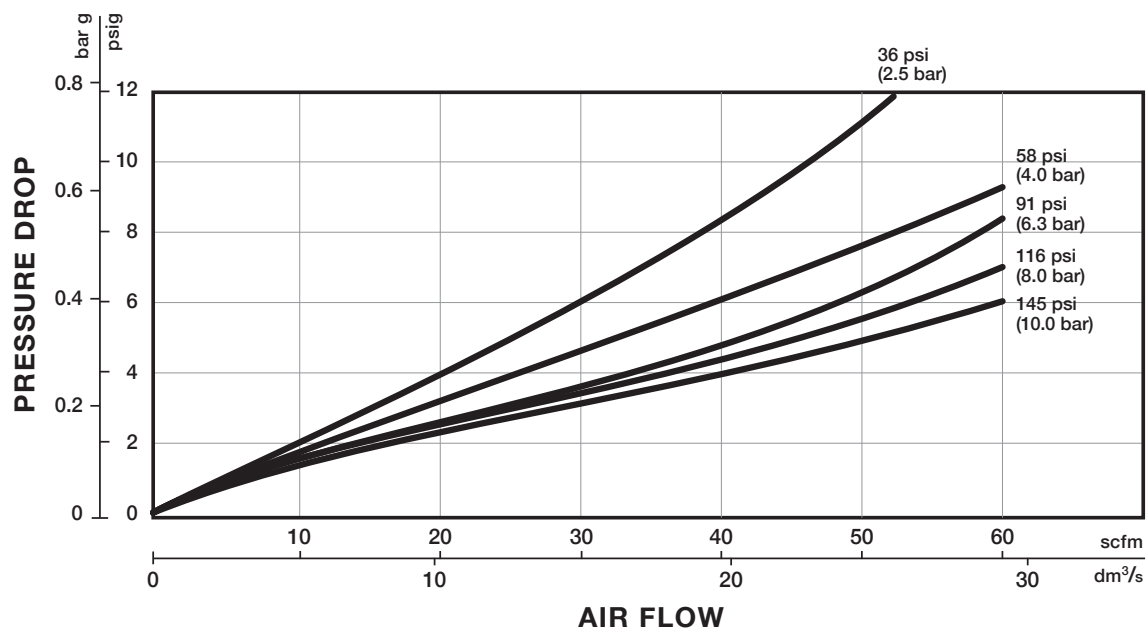
Option selector

Type	Substitute				Bowl	Substitute
Oil fog lubricator	C				Metal with liquid level indicator	D
Micro fog lubricator	M				Transparent with guard	P
Port size	Substitute					
1/4"	2					
3/8"	3					
Thread form	Substitute					
PTF	A					
ISO G	G					

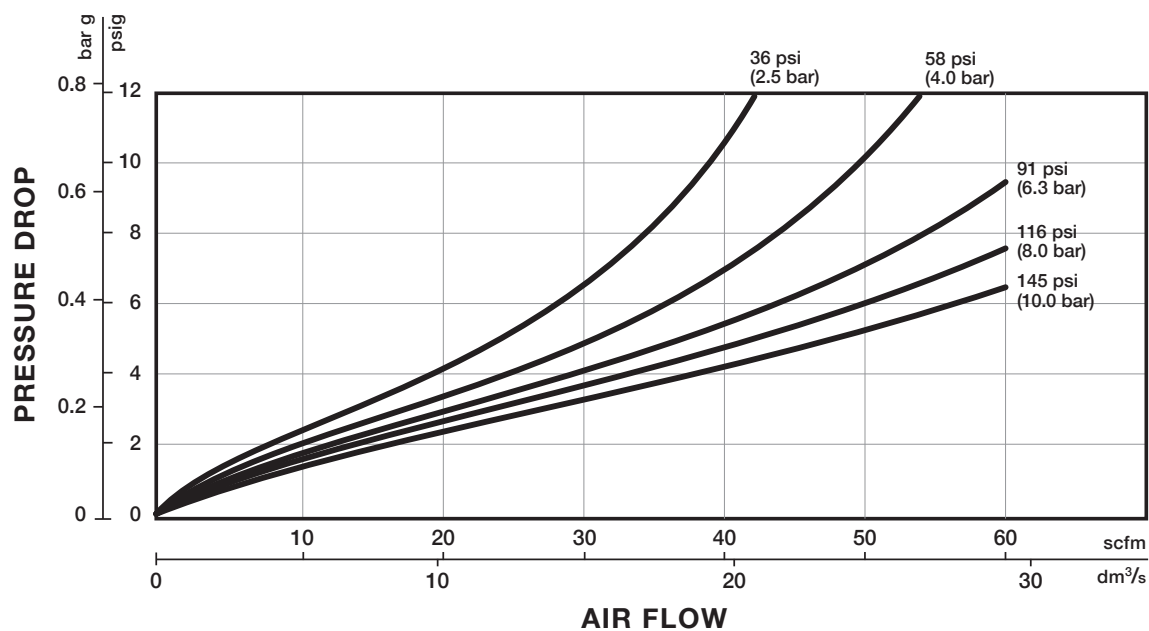
L82★-★★P-E★N

Flow characteristics

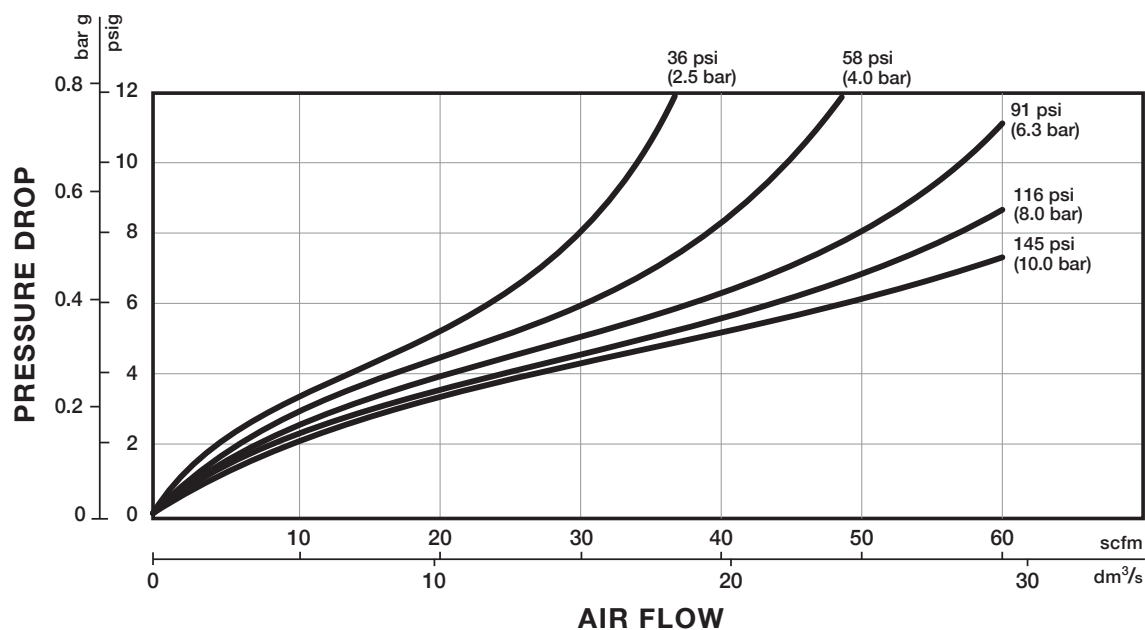
L82M Port size: 1/4"



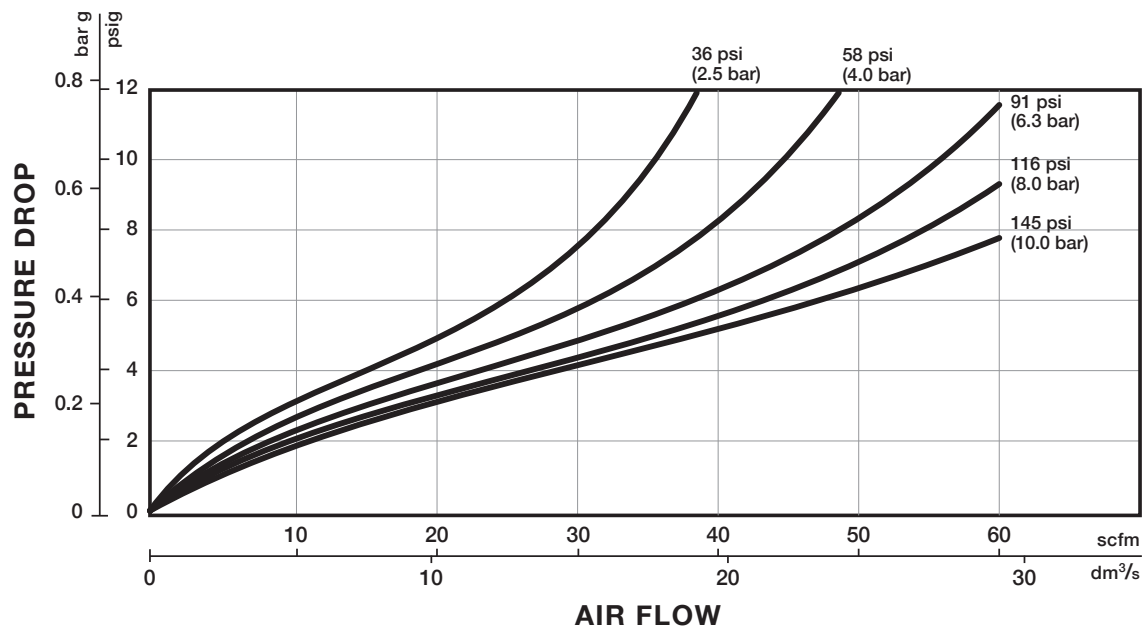
L82M Port size: 3/8"



L82C Port size: 1/4"



L82C Port size: 3/8"



Accessories

Wall mounting bracket



page 4

820024-50KIT

Quikclamp®



page 4

820014-51KIT

Quikclamp®
with bracket assembled



page 4

820014-52KIT

Pressure sensing block
1/4 PTF



page 5

820016-50KIT

Pressure sensing block
G1/4



page 5

820016-51KIT

Full flow porting block
3/8 PTF



page 4

820028-50KIT

Full flow porting block
G3/8



page 4

820028-53KIT

Pressure switch interface
block (18D pressure switch)



page 5

0523109000000000

Pneumatic pressure switch
18D (7 to 120 psi)



page 5

0881300000000000

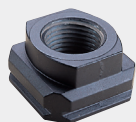
Digital pressure switch
54D (-14.5 to 145 psi)



page 6

54D-V110G-DD0-AA

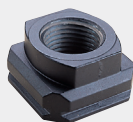
Port Adaptors
1/4 PTF



page 5

820015-02KIT

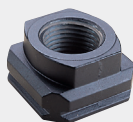
Port Adaptors
3/8 PTF



page 5

820015-03KIT

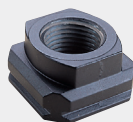
Port Adaptors
G1/4



page 5

820015-08KIT

Port Adaptors
G3/8



page 5

820015-09KIT

Service Kits

Lubricator bowl
Guarded Poly



820025-52KIT

Lubricator bowl
Metal with sight glass



820003-52KIT

Lubricator sight dome kit



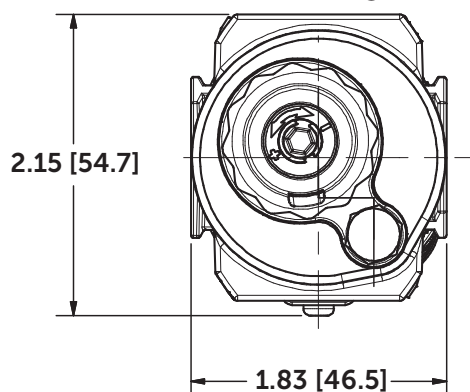
Micro fog (red) 840055-50KIT
Oil fog (green) 840055-51KIT

Dimensions

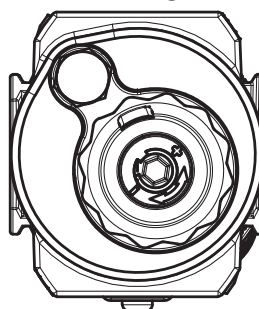
Dimensions in inches (mm)
Projection/Third angle



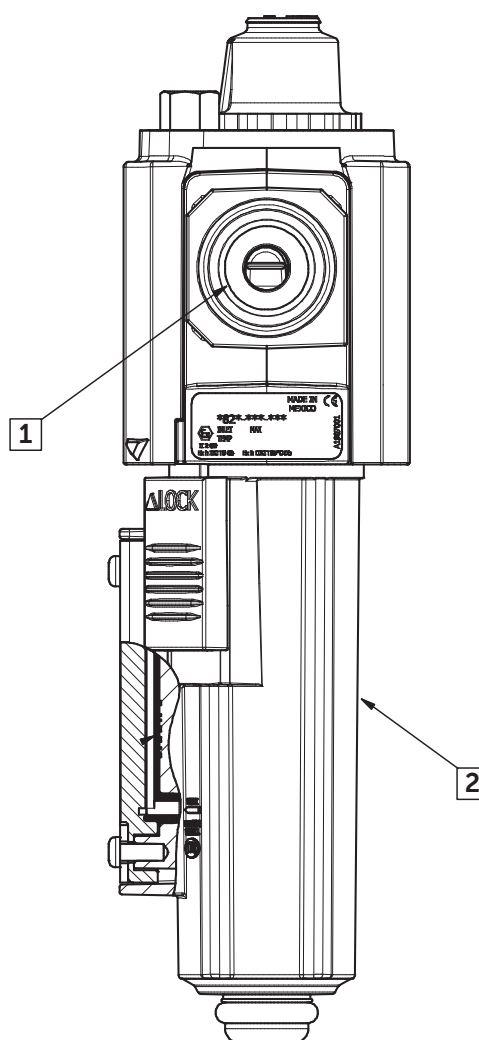
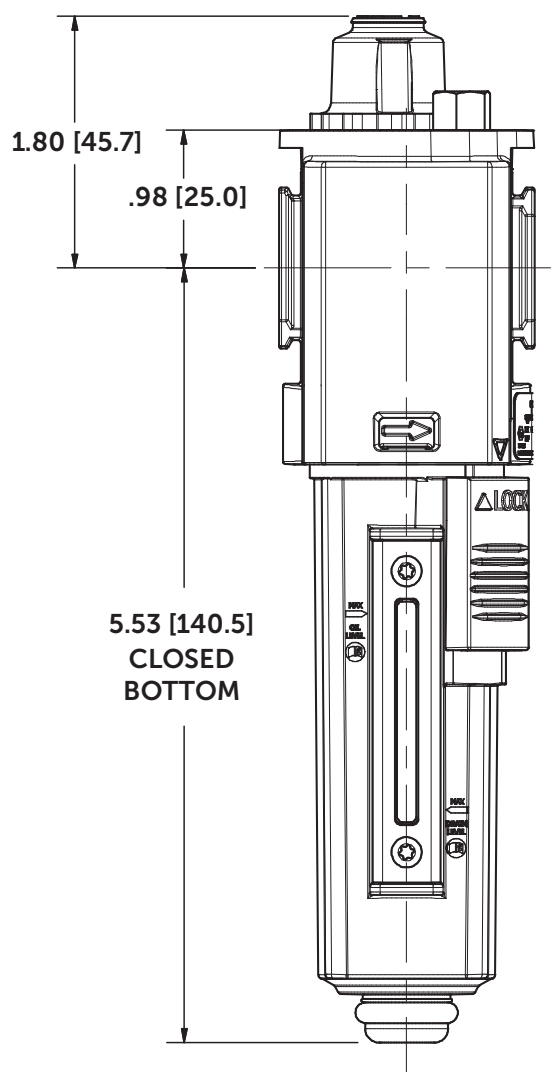
Micro fog



Oil fog



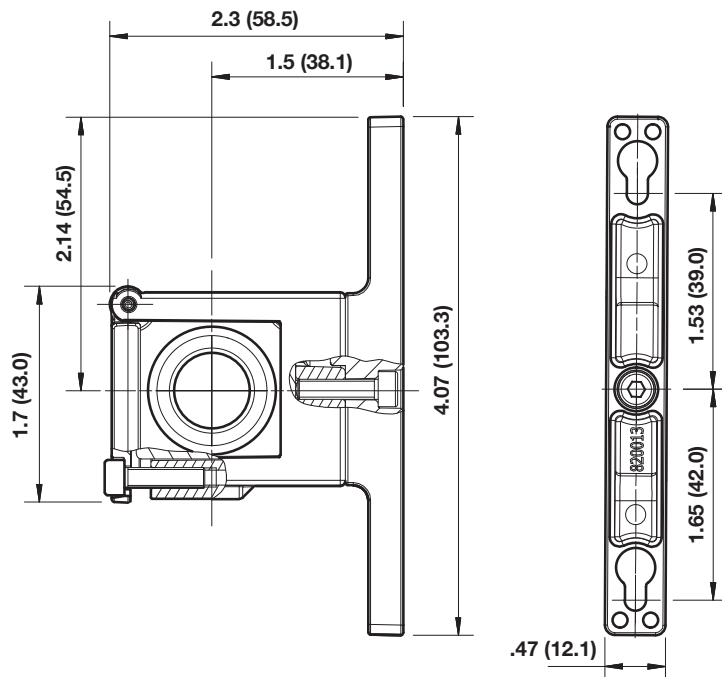
- ① Main ports 1/4", 3/8" (ISO G/PTF)
- ② Metal bowl with sight glass



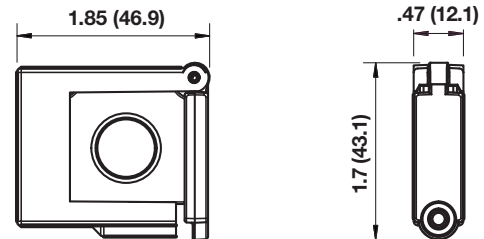


Accessories

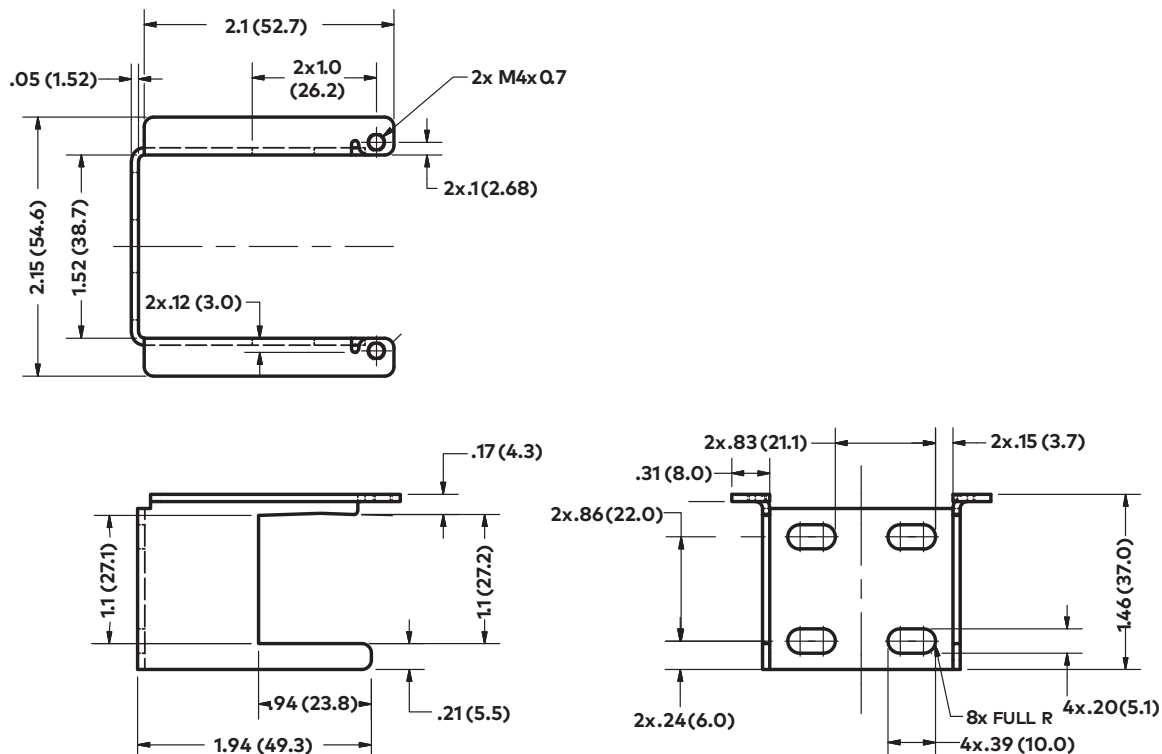
Quikclamp® with wall bracket

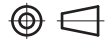


Quikclamp®

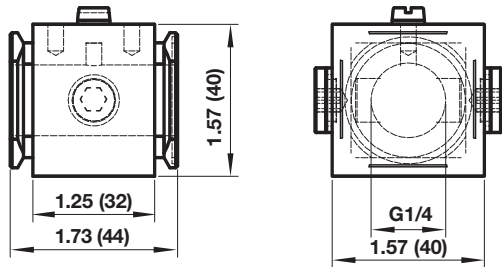


Mounting bracket

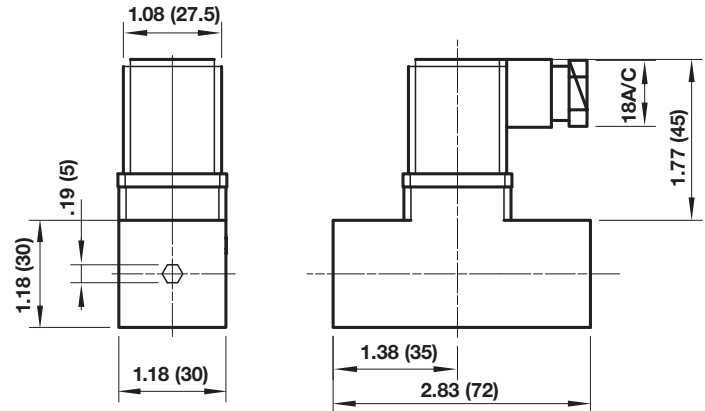




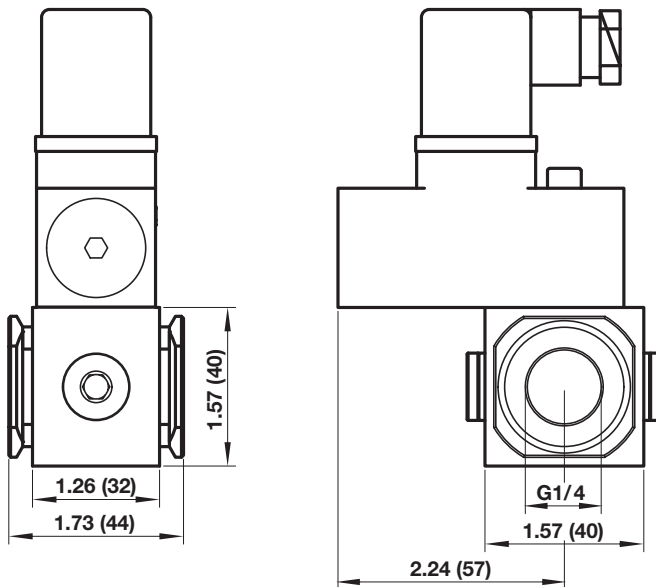
Porting block for 18D pressure switch



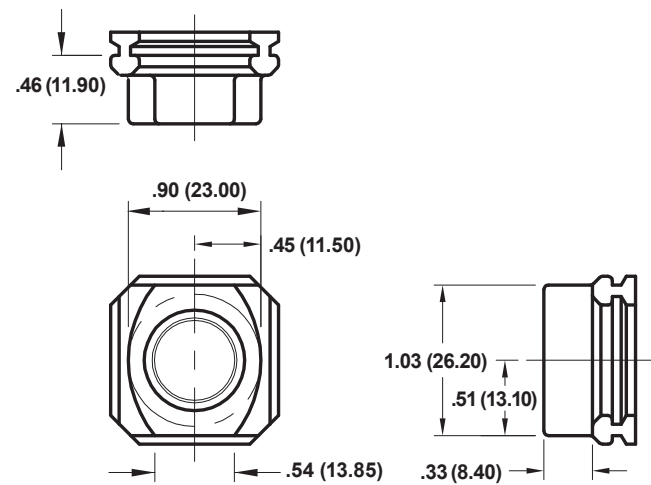
18D Pressure switch



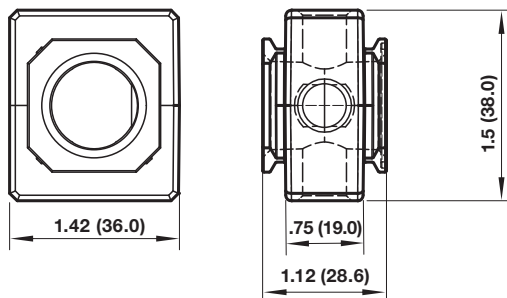
18D Porting block and 18D assembled



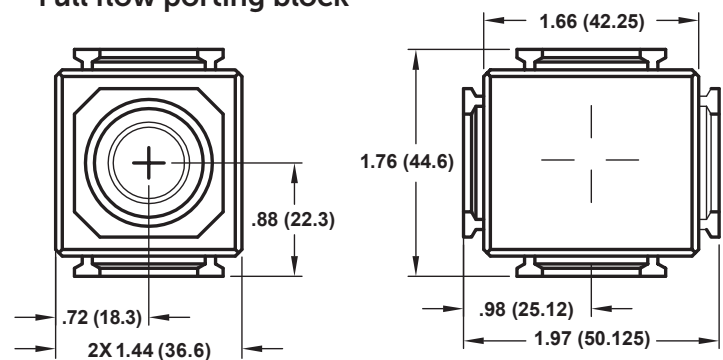
Pipe adaptor

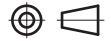


Pressure sensing block

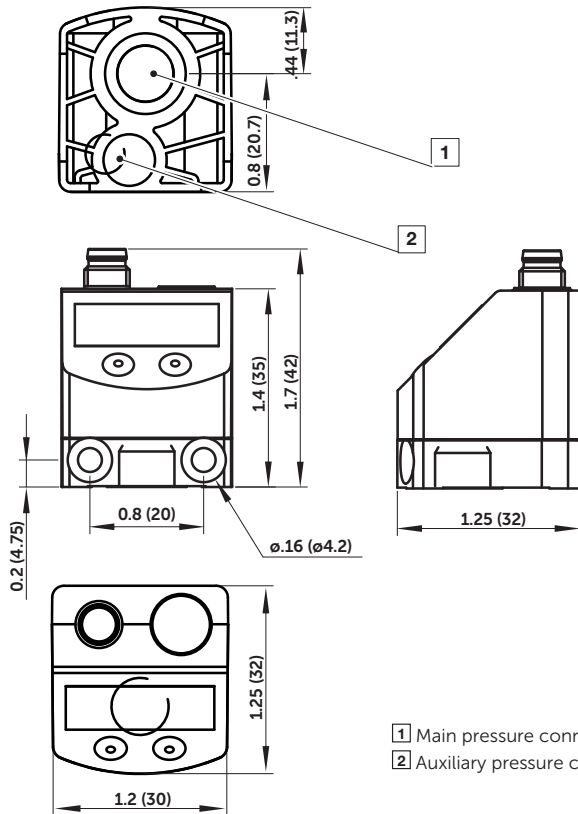


Full flow porting block





54D Pressure switch - digital



- 1 Main pressure connection (PTF 1/8)
- 2 Auxiliary pressure connection for differential pressure sensing (M5)

Warning

These products are intended for use in industrial compressed air systems only. Do not use these products where pressures and temperatures can exceed those listed under »Technical features/data«. Before using these products with fluids other than those specified, for non-industrial applications, life-support systems or other applications not within published specifications, consult IMI Precision Engineering, Norgren Ltd.

Through misuse, age, or malfunction, components used in fluid power systems can fail in various modes. The system designer is warned to consider the failure modes of

all component parts used in fluid power systems and to provide adequate safeguards to prevent personal injury or damage to equipment in the event of such failure.

System designers must provide a warning to end users in the system instructional manual if protection against a failure mode cannot be adequately provided. System designers and end users are cautioned to review specific warnings found in instruction sheets packed and shipped with these products.