

## F84G – General purpose filter Excelon® Plus Modular System

- Port size: 3/8" to 3/4" (PTF/ISO G)
- Excelon® Plus design allows in-line installation or modular installation with other Excelon® Plus products
- 5 or 40 micron particle and high efficiency water removal (> 98%)
- Double safety lock bowl
- Metal bowl with prismatic liquid level indicator lens
- Light weight polycarbonate bowl with guard
- Air purity classes in accordance to ISO8573-1: particles class 6 & 7 and liquid water class 8



### Technical features

#### Medium:

Compressed air only

#### Maximum supply pressure:

Polycarbonate bowl: 145 psi (10 bar)

Metal bowl: 290 psi (20 bar)

#### Filter element:

5 µm & 40 µm

#### Port size:

G3/8, G1/2, G3/4, 3/8 PTF, 1/2 PTF, 3/4 PTF

#### Flow:

165 scfm (78 dm³/s) at port size: 1/2", operating pressure 91 psi (6.3 bar) and a Δp: 7.25 psi (0.5 bar) drop from set. Filter element: 40 µm

#### Drain:

Manual or automatic

#### Automatic drain operating conditions (float operated):

Bowl pressure required to close drain: > 5 psi (0.35 bar)  
Bowl pressure required to open drain: ≤ 2.9 psi (0.2 bar)  
Minimum air flow required to close drain: 2 scfm (1 dm³/s)


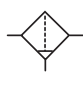
#### Ambient/Media temperature:

Polycarbonate bowl: 14 to +140°F (-10 to +60°C)  
Metal bowl: -4 to +149°F (-20 to +65°C)  
Air supply must be dry enough to avoid ice formation at temperatures below +35°F (+2°C).

#### Materials:

Body: Die cast aluminum  
Body covers: ABS  
Bowl: Transparent PC with PP guard or die cast aluminum  
Liquid level indicator lens (metal bowl): PA  
Filter element: sintered PP  
Bowl 'o'- ring: Chloroprene  
Elastomers: NBR

### Technical data F84G - standard models

Symbol	Port size PTF	Drain	Filter element (µm)	Bowl	Weight lb (kg)	Model
	3/8	Auto	40	Guarded polycarbonate	0.8 (0.38)	F84G-3AN-AP3
	1/2	Auto	40	Guarded polycarbonate	0.8 (0.38)	F84G-4AN-AP3
	3/4	Auto	40	Guarded polycarbonate	0.8 (0.38)	F84G-6AN-AP3
	3/8	Auto	40	Metal with level indicator	1.1 (0.52)	F84G-3AN-AD3
	1/2	Auto	40	Metal with level indicator	1.1 (0.52)	F84G-4AN-AD3
	3/4	Auto	40	Metal with level indicator	1.1 (0.52)	F84G-6AN-AD3
	3/8	Manual	40	Guarded polycarbonate	0.8 (0.38)	F84G-3AN-QP3
	1/2	Manual	40	Guarded polycarbonate	0.8 (0.38)	F84G-4AN-QP3
	3/4	Manual	40	Guarded polycarbonate	0.8 (0.38)	F84G-6AN-QP3
	3/8	Manual	40	Metal with level indicator	1.1 (0.52)	F84G-3AN-QD3
	1/2	Manual	40	Metal with level indicator	1.1 (0.52)	F84G-4AN-QD3
	3/4	Manual	40	Metal with level indicator	1.1 (0.52)	F84G-6AN-QD3

## Option selector

F84G-★★★★-★★★★

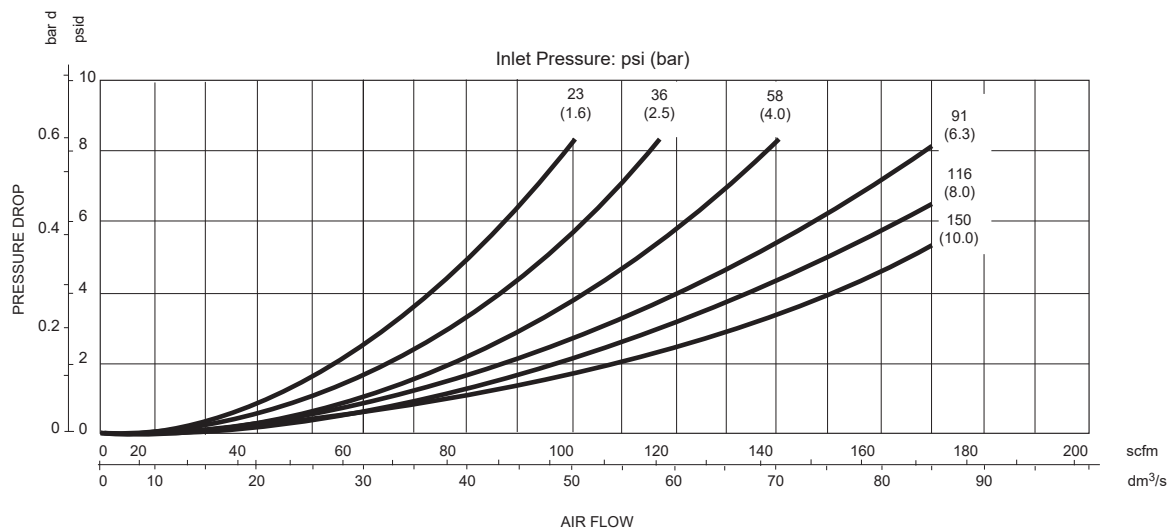
Port size	Substitute
3/8"	3
1/2"	4
3/4"	6
Thread form	Substitute
PTF	A
ISO G parallel	G
Differential Pressure Indicator	Substitute
With Differential Pressure Indicator	D
Without Differential Pressure Indicator	N

Element	Substitute
5 µm	1
40 µm	3
Bowl	Substitute
Transparent with guard	P
Metal with liquid indicator	D
Metal without liquid indicator	M
Drain	Substitute
Manual	Q
Auto drain	A

## Flow characteristics

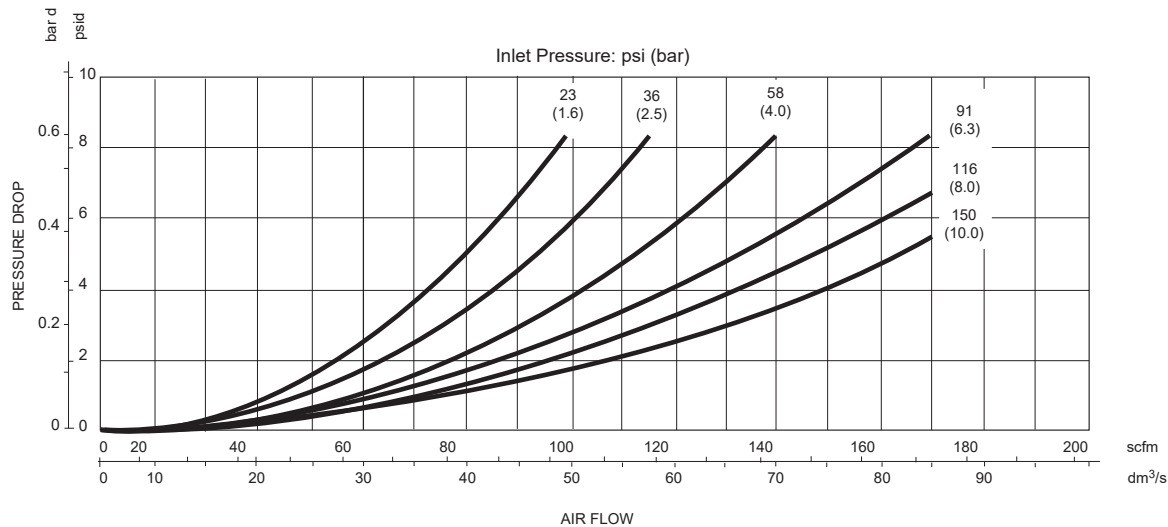
Element 40 µm

Port size: 1/2"



Element 5 µm

Port size: 1/2"



## Accessories

### Quikclamp®



Page 6

840014-51KIT

### Quikclamp® with bracket assembled



Page 6

840014-52KIT

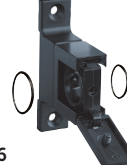
### Hybrid Quikclamp® \*1



Page 6

840014-61

### Hybrid Quikclamp® with bracket assembled \*1



Page 6

840014-62

### Wall mounting bracket



Page 6

840024-50KIT

\*1) To connect new Excelon Plus to Excelon 74/73 units. Having the same hole centers as 74 series mounting bracket. A Quikclamp adds 13.6 mm to the overall width of a combination unit

### Full flow porting block 3/4 PTF



Page 7

840028-68KIT

### Full flow porting block G3/4



Page 7

840028-69KIT

### Full flow porting block 3/4 PTF



Page 7

840028-50KIT

### Full flow porting block G3/4



Page 7

840028-53KIT

### Pressure switch interface block (18D pressure switch) G1/2



Page 7

0337717000000000

### Pneumatic pressure switch 18D (7 to 120 psi)



Page 7

0881300000000000

### Digital pressure switch 54D (-14.5 to 145 psi)



Page 8

54D-V110G-DD0-AA

### Pressure sensing block 1/4 PTF



Page 7

840016-50KIT

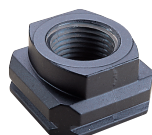
### Pressure sensing block G1/4



Page 7

840016-51KIT

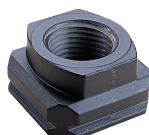
### Port Adaptors 3/8 PTF



Page 7

840015-02KIT

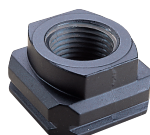
### Port Adaptors 1/2 PTF



Page 7

840015-03KIT

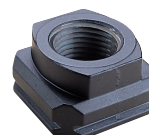
### Port Adaptors 3/4 PTF



Page 7

840015-04KIT

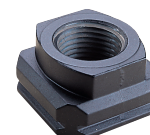
### Port Adaptors G3/8



Page 7

840015-10KIT

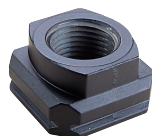
### Port Adaptors G1/2



Page 7

840015-11KIT

### Port Adaptors G3/4



Page 7

840015-12KIT

## Maintenance/Service

Filter cartridge  
5 micron



840038-50KIT

Filter cartridge  
40 micron



840038-51KIT

Auto drain kit with  
metal Nut - Imperial



6000-61KIT

Auto drain kit with  
metal Nut - Metric



6000-60KIT

## Spare parts

Filter Bowl  
(Guarded Poly bowl with  
auto drain 6 mm PIF)



840025-51KIT

Filter Bowl  
(Guarded Poly bowl with  
manual drain)



840025-50KIT

Filter Bowl  
(Metal with S/Glass & auto  
drain, 6 mm PIF)



840003-51KIT

Filter Bowl  
(Metal with S/Glass &  
manual drain)



840003-50KIT

Filter Bowl  
(Guarded Poly bowl with  
auto drain, 1/4 PIF)



840025-53KIT

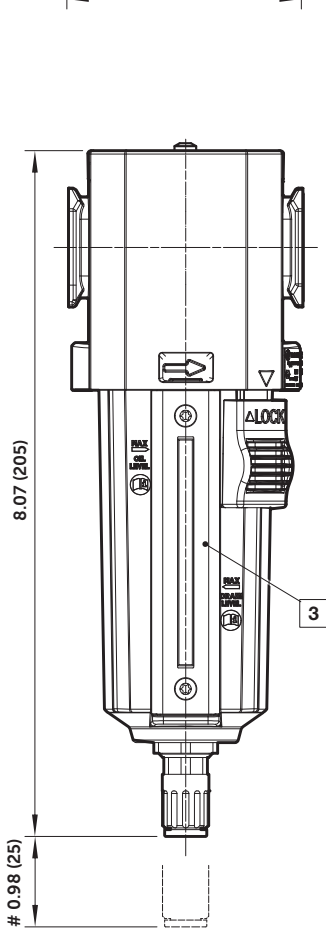
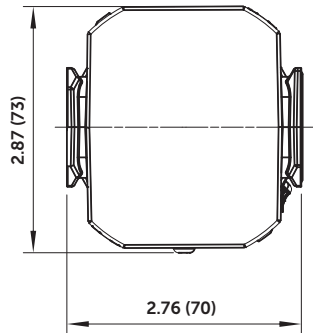
Filter Bowl  
(Metal with S/Glass &  
auto drain, 1/4 PIF)



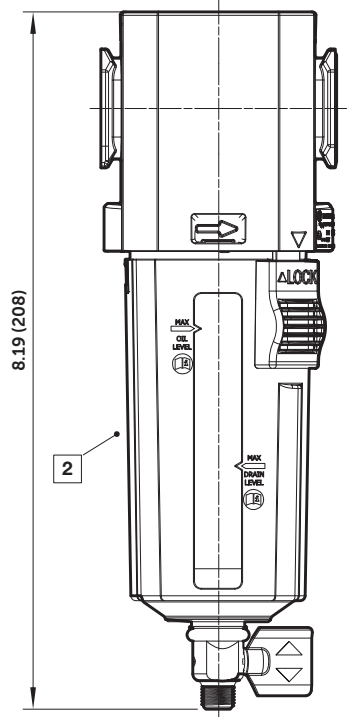
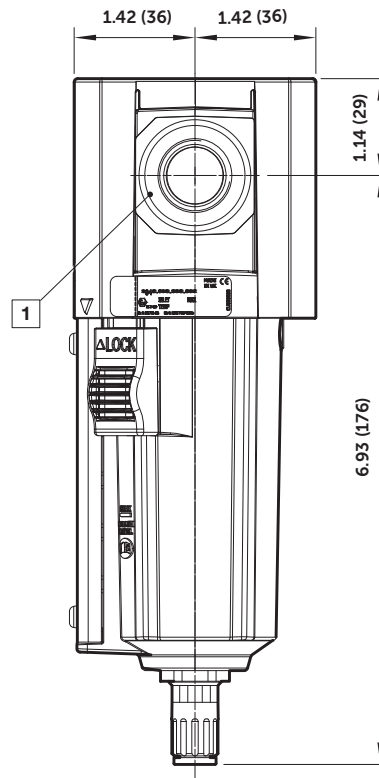
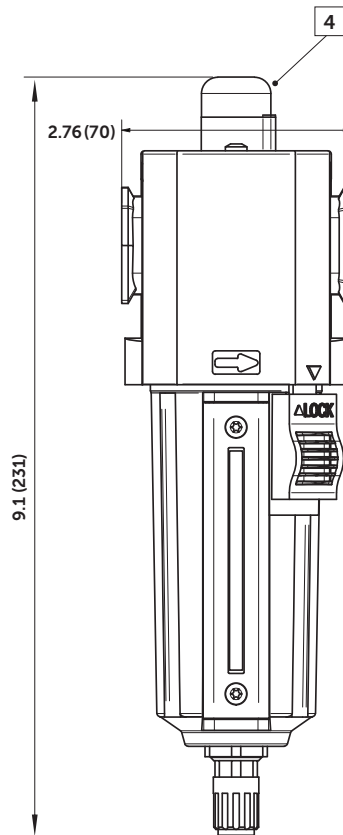
840003-56KIT



## Dimensions

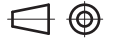


Automatic Drain



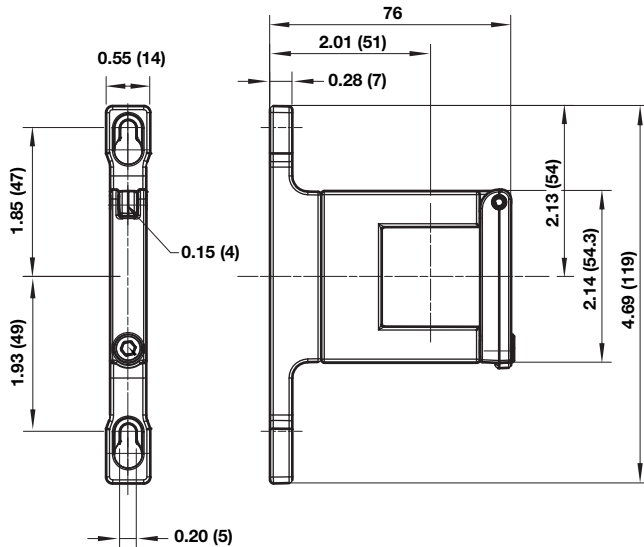
1/4 Turn Manual Drain

- # Minimum clearance for bowl removal
- ① Main ports 3/8", 1/2" or 3/4" (PTF/ISO G)
- ② Transparent bowl with guard
- ③ Metal bowl with liquid level indicator lens
- ④ Service Indicator

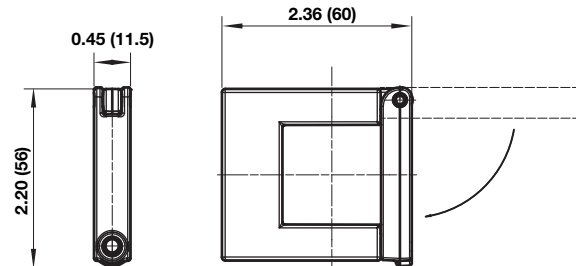


## Accessories

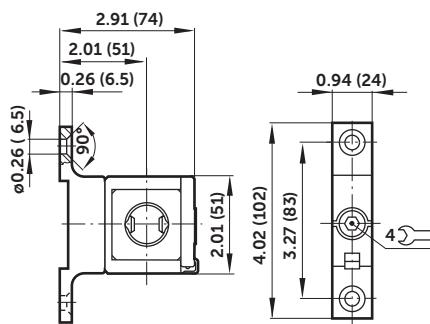
### Quikclamp® with wall bracket



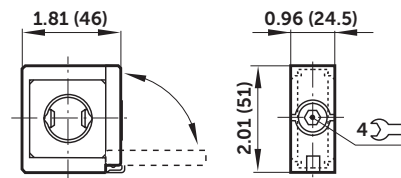
### Quikclamp®



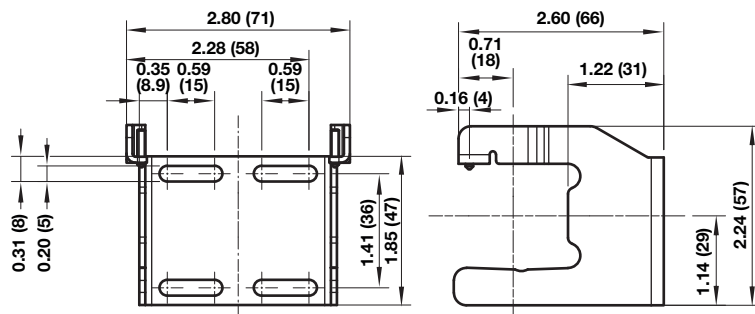
### Hybrid-Quikclamp® with wall bracket



### Hybrid-Quikclamp®

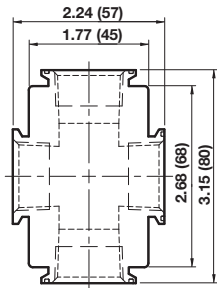


### Mounting bracket

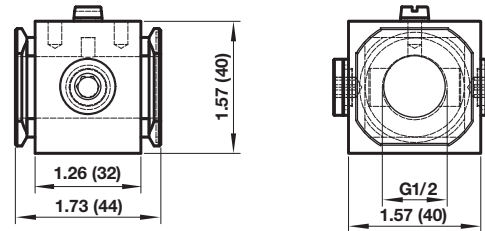




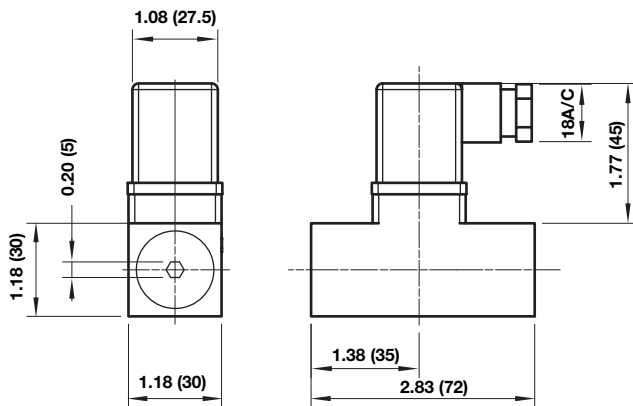
**Full flow vertical porting block**



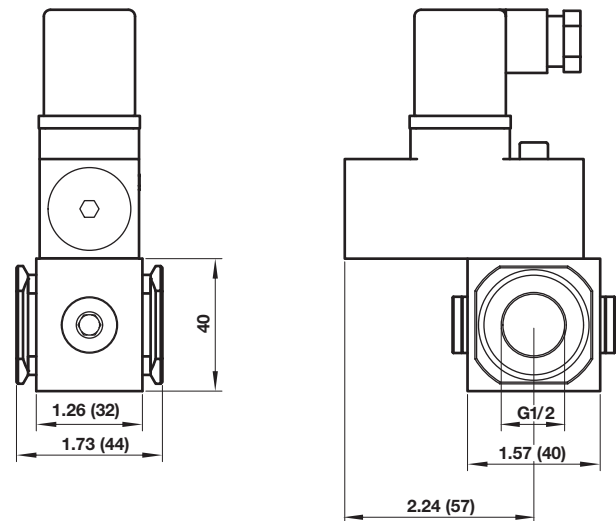
**Porting block for 18D pressure switch**



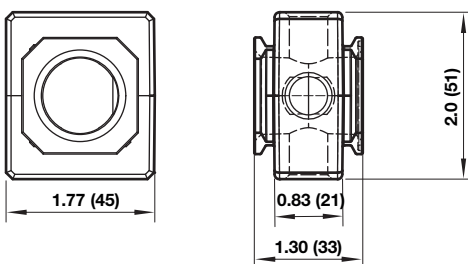
**18D Pressure switch**



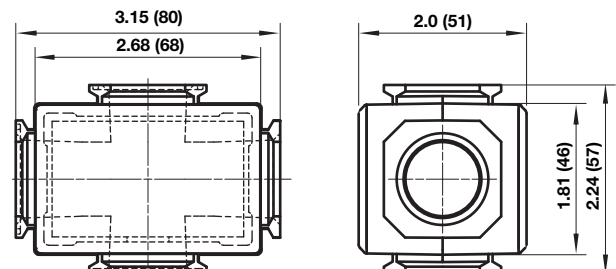
**18D Porting block and 18D assembled**



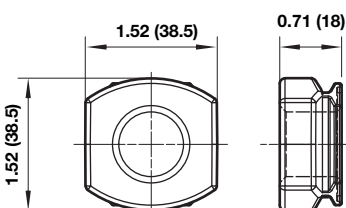
**Pressure sensing block**



**Full flow porting block**

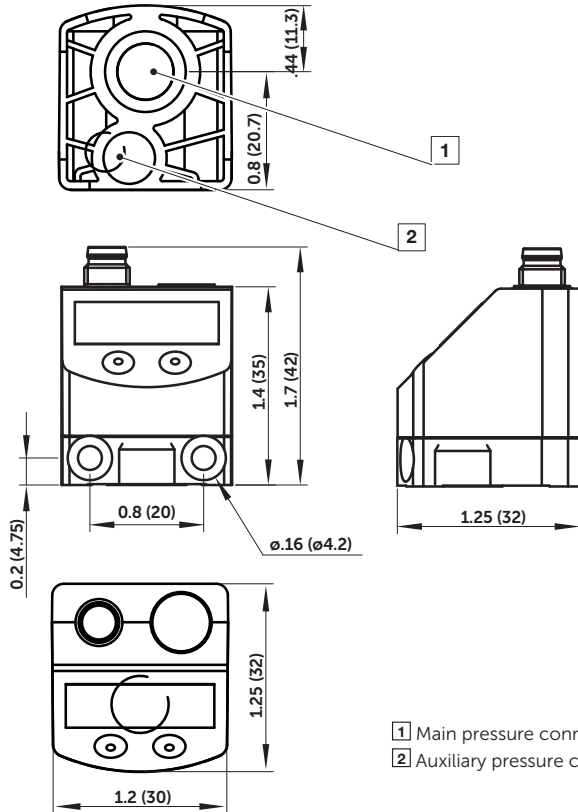


**Pipe adaptor**





## 54D Pressure switch - digital



- 1 Main pressure connection (PTF 1/8)
- 2 Auxiliary pressure connection for differential pressure sensing (M5)

### Warning

Improper selection, misuse, age or malfunction of components used in systems can cause failure in various modes. The system designer is warned to consider the failure modes of all component parts and to provide adequate safeguards to prevent personal injury or damage to equipment or property in the event of such failure modes. System designers and end users are cautioned to consult instruction sheets and specifications available from the factory. The system designer/end user is responsible for verifying that all requirements for the application are met.

### Warranty

The products described herein are warranted subject to seller's Standard Terms and Condition of Sale, available at seller's website.

**Proposition 65:** These products may contain chemicals known to the state of California to cause cancer, or birth defects, or other reproductive harm.