

F84C – Oil removal filter Excelon® Plus Modular System

- Port size: 3/8" to 3/4" (PTF/ISO G)
- Excelon® Plus design allows in-line installation or modular installation with other Excelon® Plus products
- High efficiency oil and particle removal
- Double safety lock bowl
- Metal bowl with prismatic liquid level indicator lens
- Light weight Polycarbonate bowl with guard
- Service indicator standard
- Air purity class in accordance with ISO 8573-1: Remaining oil aerosol to class 1*

*Tested in accordance with the methods laid out in ISO 12500-1 using an inlet oil aerosol concentration of 4mg/m³



Technical features

Medium:

Compressed air only

Maximum supply pressure:

Polycarbonate bowl:
145 psi (10 bar)
Metal bowl: 290 psi (20 bar)

Remaining oil content:

0.01 mg/m³ at +69°F (+21°C)

Particle removal:

To 0.01 µm

Port size:

G3/8, G1/2, G3/4, 3/8 PTF,
1/2 PTF, 3/4 PTF

Flow:

Maximum flow to maintain stated oil removal performance at challenge rate of 4 mg/m³
F84C: 53 scfm (25 dm³/s), at port size: 1/2"
Operating pressure: 91 psi (6.3 bar)

Drain:

Manual or automatic

Automatic drain operating conditions (float operated):

Bowl pressure required to close drain: > 5 psi (0.35 bar)
Bowl pressure required to open drain: ≤ 2.9 psi (0.2 ba)
Minimum air flow required to close drain: 2 scfm (1 dm³/s)

Ambient/Media temperature:

Polycarbonate bowl:
+14 to +140°F (-10 to +60°C)
Metal bowl:
-4 to +149°F (-20 to +65°C)
Air supply must be dry enough to avoid ice formation at temperatures below +35°F (+2°C).



Note:

Install an F84G filter with a 5 µm filter element upstream of the F84C filter for maximum service life.

Materials:

Body: Die cast aluminum
Body covers: ABS
Bowl: Transparent PC with PP guard or die cast aluminum
Liquid level indicator lens (metal bowl): PA
Filter element: Synthetic fiber & PE foam
Bowl 'o'- ring: Chloroprene
Elastomers: NBR

Technical data F84C - standard models

Symbol	Port size PTF	Drain	Bowl	Weight lb (kg)	Model
	3/8	Auto	Guarded polycarbonate	0.8 (0.38)	F84C-3AD-AP0
	1/2	Auto	Guarded polycarbonate	0.8 (0.38)	F84C-4AD-AP0
	3/4	Auto	Guarded polycarbonate	0.8 (0.38)	F84C-6AD-AP0
	3/8	Auto	Metal with level indicator	1.1 (0.52)	F84C-3AD-AD0
	1/2	Auto	Metal with level indicator	1.1 (0.52)	F84C-4AD-AD0
	3/4	Auto	Metal with level indicator	1.1 (0.52)	F84C-6AD-AD0
	3/8	Manual	Guarded polycarbonate	0.8 (0.38)	F84C-3AD-QP0
	1/2	Manual	Guarded polycarbonate	0.8 (0.38)	F84C-4AD-QP0
	3/4	Manual	Guarded polycarbonate	0.8 (0.38)	F84C-6AD-QP0
	3/8	Manual	Metal with level indicator	1.1 (0.52)	F84C-3AD-QD0
	1/2	Manual	Metal with level indicator	1.1 (0.52)	F84C-4AD-QD0
	3/4	Manual	Metal with level indicator	1.1 (0.52)	F84C-6AD-QD0

Option selector

F84C-★★★★-★★★0

Port size	Substitute
3/8"	3
1/2"	4
3/4"	6
Thread form	Substitute
PTF	A
ISO G parallel	G

Bowl	Substitute
Metal with liquid indicator	D
Transparent with guard	P
Drain	Substitute
Manual	Q
Auto drain	A
Differential Pressure Indicator	Substitute
With differential pressure indicator	D
Without differential pressure indicator	N

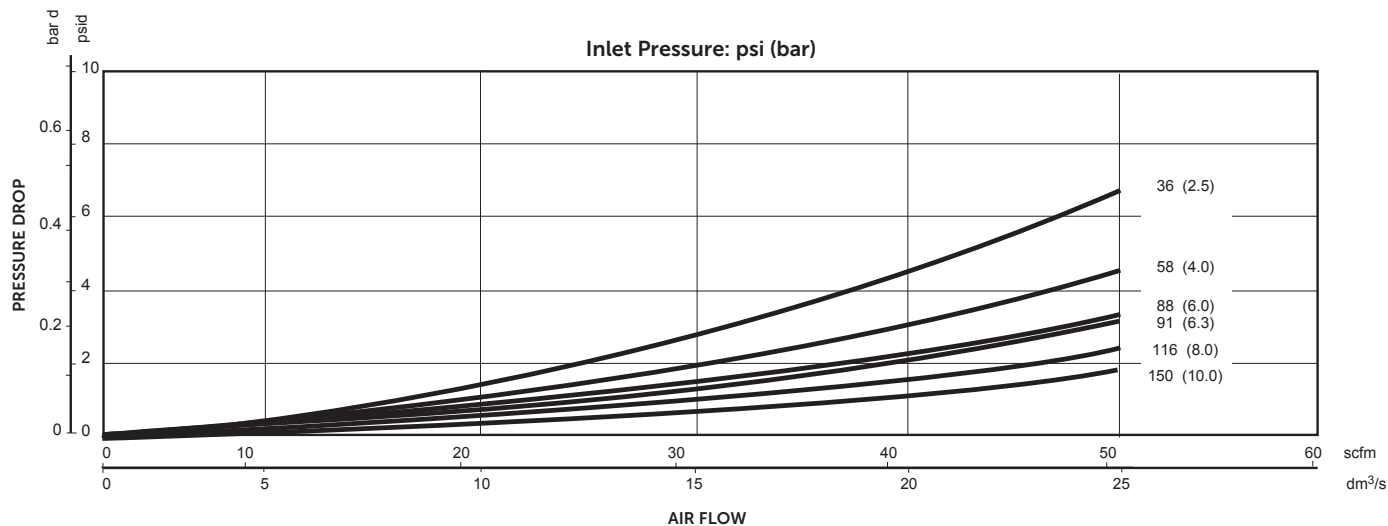
Typical performance characteristics

Inlet pressure psi (bar)	Maximum flow scfm (dm ³ /s) *1)
36 (2.5)	25 (12)
58 (4.0)	36 (17)
91 (6.3)	53 (25)
116 (8.0)	63 (30)
145 (10)	74 (35)






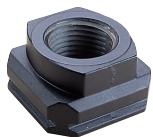
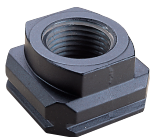
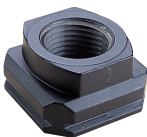
*1) Maximum flow to maintain stated oil removal performance

Flow characteristics

F84C



Accessories

Quikclamp®  Page 6 840014-51KIT	Quikclamp® with bracket assembled  Page 6 840014-52KIT	Hybrid Quikclamp® *1  Page 6 840014-61	Hybrid Quikclamp® with bracket assembled *1  Page 6 840014-62	Wall mounting bracket  Page 6 840024-50KIT
<p>*1) To connect new Excelon Plus to Excelon 74/73 units. Having the same hole centers as 74 series mounting bracket. A Quikclamp adds 13.6 mm to the overall width of a combination unit</p>				
Full flow porting block 3/4 PTF  Page 7 840028-68KIT	Full flow porting block G3/4  Page 7 840028-69KIT	Full flow porting block 3/4 PTF  Page 7 840028-50KIT	Full flow porting block G3/4  Page 7 840028-53KIT	
Pressure switch interface block (18D pressure switch) G1/2  Page 7 0337717000000000	Pneumatic pressure switch 18D (7 to 120 psi)  Page 7 0881300000000000	Digital pressure switch 54D (-14.5 to 145 psi)  Page 8 54D-V110G-DD0-AA	Pressure sensing block 1/4 PTF  Page 7 840016-50KIT	Pressure sensing block G1/4  Page 7 840016-51KIT
Port Adaptors 3/8 PTF  Page 7 840015-02KIT	Port Adaptors 1/2 PTF  Page 7 840015-03KIT	Port Adaptors 3/4 PTF  Page 7 840015-04KIT	Port Adaptors G3/8  Page 7 840015-10KIT	Port Adaptors G1/2  Page 7 840015-11KIT
Port Adaptors G3/4  Page 7 840015-12KIT				

Maintenance/Service

Coalescing
filter element



840044-50KIT

Auto drain kit with
metal Nut - inch



6000-61KIT

Auto drain kit with
metal Nut - Metric



6000-60KIT

Spare parts

Filter Bowl
(Guarded Poly bowl with
auto drain 6 mm PIF)



840025-51KIT

Filter Bowl
(Guarded Poly bowl with
manual drain)



840025-50KIT

Filter Bowl
(Metal with S/Glass & auto
drain, 6 mm PIF)



840003-51KIT

Filter Bowl
(Metal with S/Glass &
manual drain)



840003-50KIT

Filter Bowl
(Guarded Poly bowl with
auto drain, 1/4 PIF)



840025-53KIT

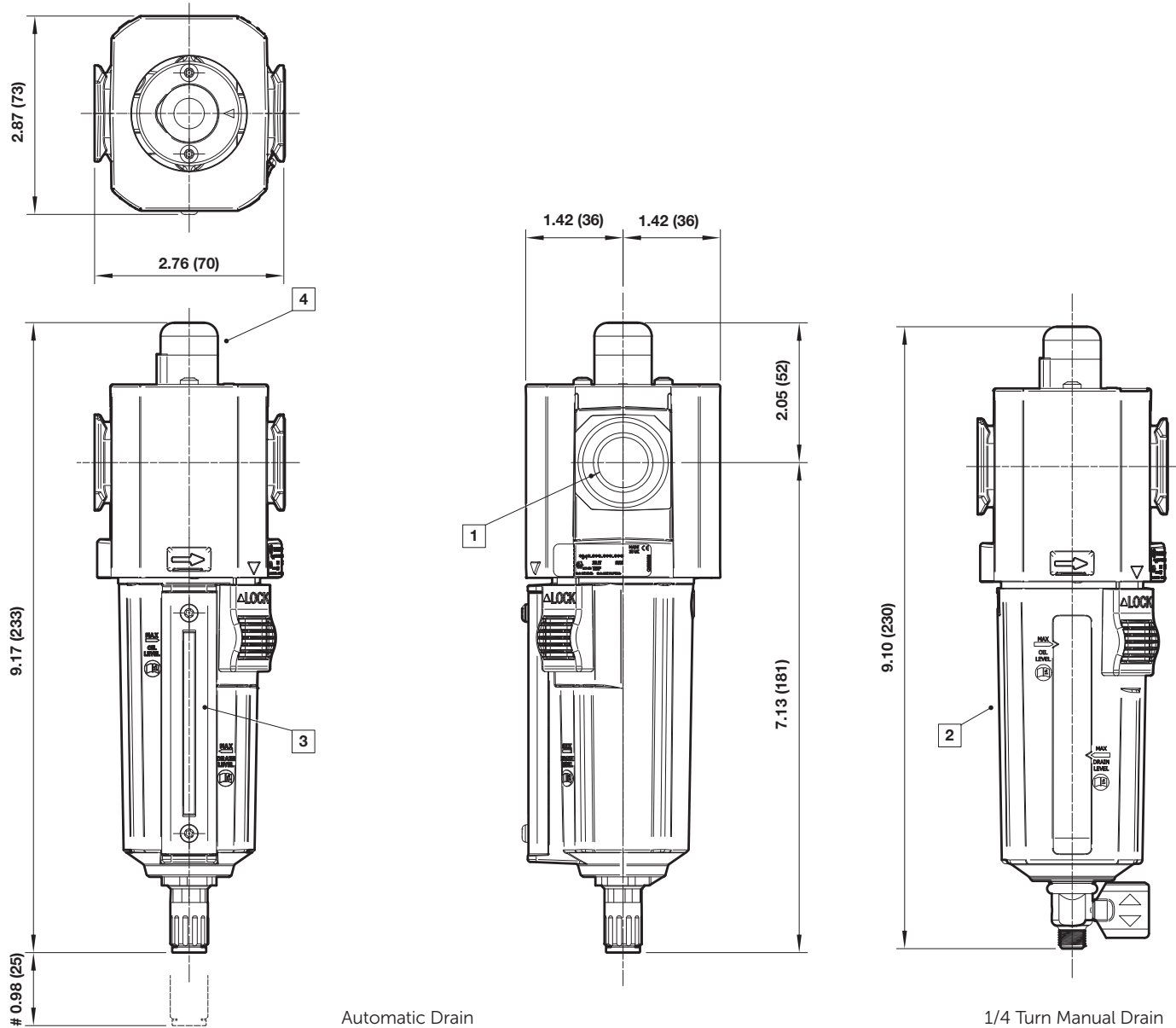
Filter Bowl
(Metal with S/Glass &
auto drain, 1/4 PIF)



840003-56KIT



Dimensions



Minimum clearance for bowl removal

① Main ports 3/8", 1/2" or 3/4" (ISO G/PTF)

② Transparent bowl with guard

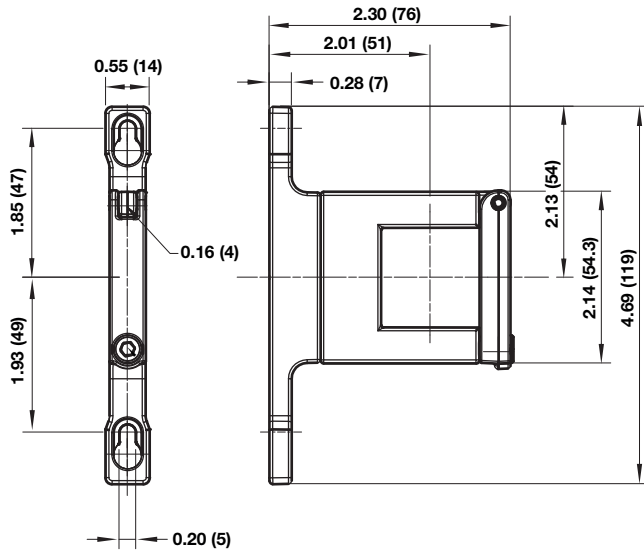
③ Metal bowl with liquid level indicator lens

④ Service indicator

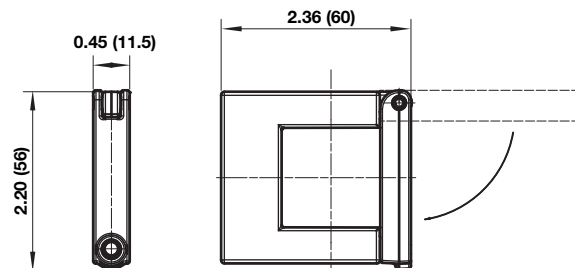


Accessories

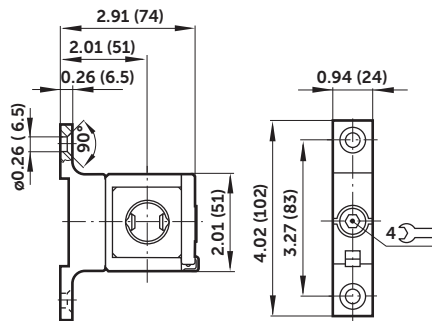
Quikclamp® with wall bracket



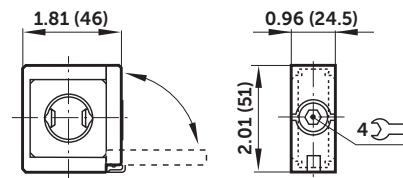
Quikclamp®



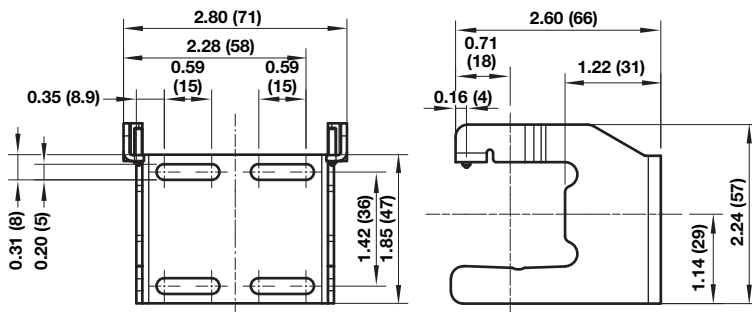
Hybrid-Quikclamp® with wall bracket



Hybrid-Quikclamp®

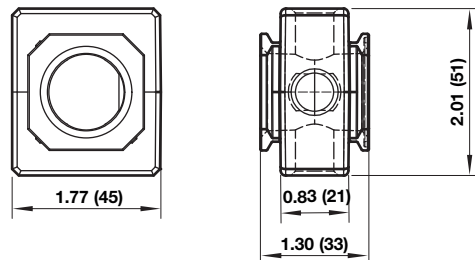


Mounting bracket

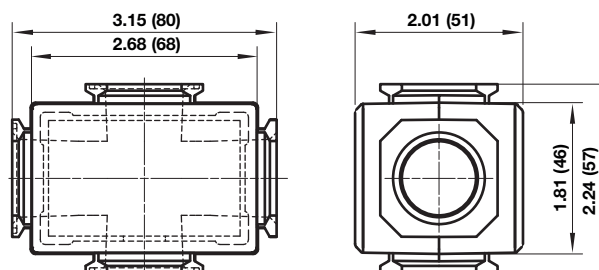




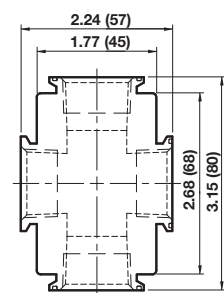
Pressure sensing block



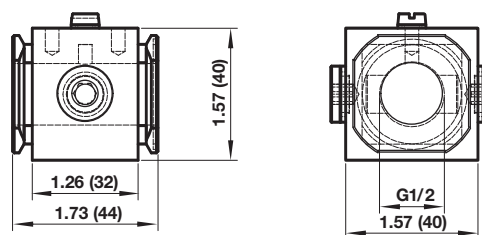
Full flow porting block



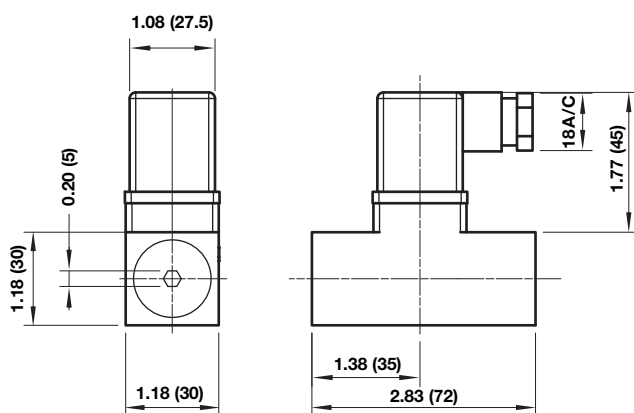
Full flow vertical porting block



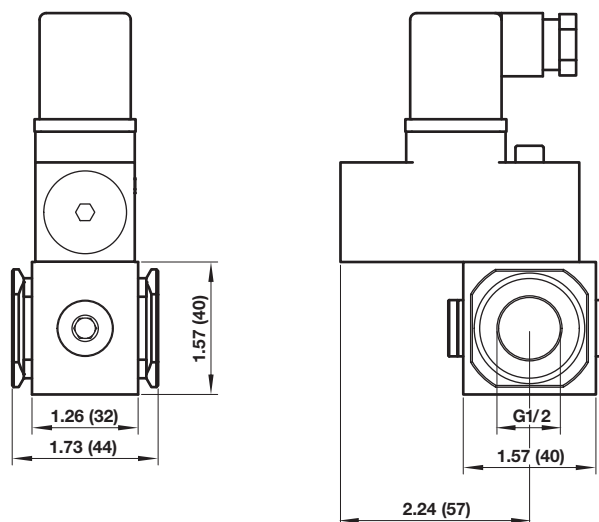
Porting block for 18D pressure switch



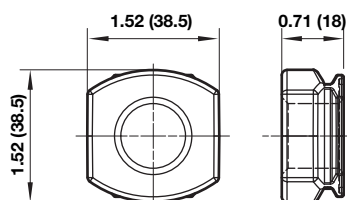
18D Pressure switch



18D Porting block and 18D assembled

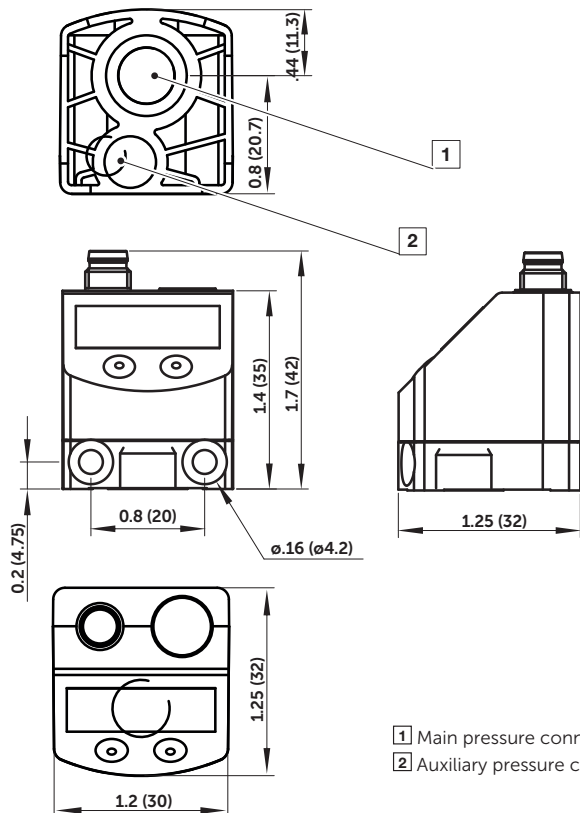


Pipe adaptor





54D Pressure switch - digital



- 1 Main pressure connection (PTF 1/8)
- 2 Auxiliary pressure connection for differential pressure sensing (M5)

Warning

Improper selection, misuse, age or malfunction of components used in systems can cause failure in various modes. The system designer is warned to consider the failure modes of all component parts and to provide adequate safeguards to prevent personal injury or damage to equipment or property in the event of such failure modes. System designers and end users are cautioned to consult instruction sheets and specifications available from the factory. The system designer/end user is responsible for verifying that all requirements for the application are met.

Warranty

The products described herein are warranted subject to seller's Standard Terms and Condition of Sale, available at seller's website.

Proposition 65: These products may contain chemicals known to the state of California to cause cancer, or birth defects, or other reproductive harm.