

## F84V – Oil vapor removal filters Excelon® Plus Modular System

- Port size: 3/8" to 3/4" (PTF/ISO G)
- Excelon® Plus design allows in-line installation or modular installation with other Excelon® Plus products
- Adsorbing type activated carbon element removes oil vapors and most hydrocarbon odors
- Double safety lock bowl
- Light weight Polycarbonate bowl with guard
- Non-sightglass metal bowl
- Air purity class in accordance with ISO 8573-1: Remaining oil aerosol to class 0\*

\*Tested in accordance with the methods laid out in ISO 12500-2 using an inlet oil aerosol concentration of 0.018mg/m<sup>3</sup>



### Technical features

#### Medium:

Compressed air only

#### Maximum operating pressure:

Polycarbonate bowl:  
145 psi (10 bar)  
Metal bowl: 290 psi (20 bar)

#### Remaining oil content:

0.003 mg/m<sup>3</sup> max. at  
+69°F (+21°C)

#### Port size:

G3/8, G1/2, G3/4, 3/8 PTF,  
1/2 PTF, 3/4 PTF

#### Flow:

53 scfm (25 dm<sup>3</sup>/s)  
To maintain stated oil content  
at port size: 1/2"

#### Operating pressure:

91 psi (6.3 bar)

#### Ambient/Media temperature:

-4 to +149°F (-20 to +65°C)  
Air supply must be dry enough  
to avoid ice formation at  
temperatures below +35°F  
(+2°C)

#### Note:

Install an F84C coalescing filter  
upstream of the F84V filter for  
maximum service life.

#### Materials:

Body: Die cast aluminum  
Body covers: ABS  
Bowl: Transparent PC with  
PP guard or die cast aluminum  
Bowl 'o'-ring: Chloroprene  
Elastomers: NBR

### Technical data F84V - standard models

Symbol	Port size PTF	Drain	Filter element (µm)	Bowl	Weight lb (kg)	Model
	3/8	Closed bowl	Vapor removal	Guarded polycarbonate	0.8 (0.38)	F84V-3AN-EPA
	1/2	Closed bowl	Vapor removal	Guarded polycarbonate	0.8 (0.38)	F84V-4AN-EPA
	3/4	Closed bowl	Vapor removal	Guarded polycarbonate	0.8 (0.38)	F84V-6AN-EPA
	3/8	Closed bowl	Vapor removal	Metal bowl - no sight glass	1.1 (0.52)	F84V-3AN-EMA
	1/2	Closed bowl	Vapor removal	Metal bowl - no sight glass	1.1 (0.52)	F84V-4AN-EMA
	3/4	Closed bowl	Vapor removal	Metal bowl - no sight glass	1.1 (0.52)	F84V-6AN-EMA

## Option selector

Port size	Substitute
3/8"	3
1/2"	4
3/4"	6

F84V-★★N-E★★A

Bowl	Substitute
Metal	M
Transparent with guard	P
Thread form	Substitute
PTF	A
ISO G parallel	G

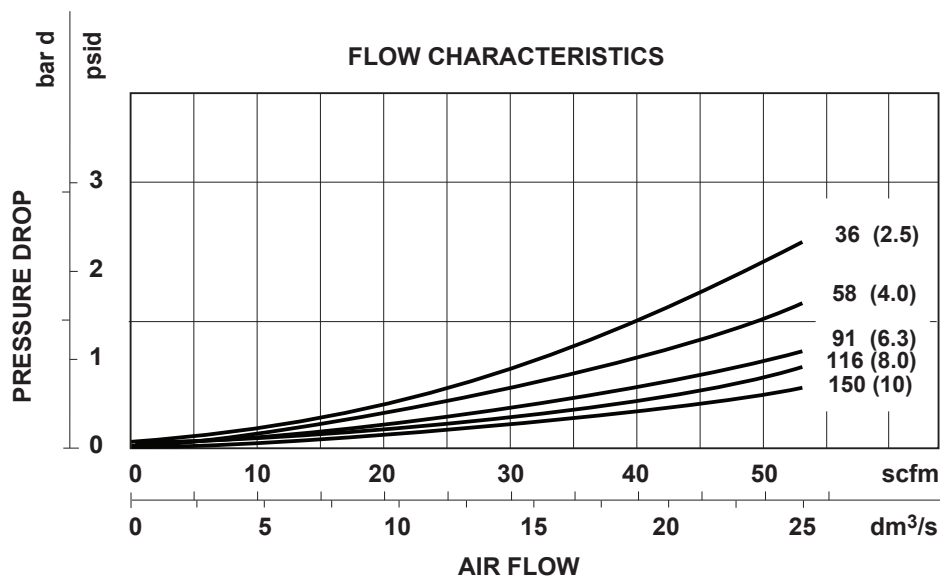
## Typical performance characteristics

Inlet pressure psi (bar)	Maximum flow scfm (dm <sup>3</sup> /s) *1)
36 (2.5)	32 (15)
58 (4.0)	42 (20)
91 (6.3)	53 (25)
116 (8.0)	59 (28)
145 (10)	63 (30)

\*1) Maximum flow to maintain stated oil removal performance

## Flow characteristics

Port size: 1/2"



## Accessories

Wall mounting bracket



Page 5

840024-50KIT

Quikclamp®



Page 5

840014-51KIT

Quikclamp®  
with bracket assembled



Page 5

840014-52KIT

Pressure sensing block  
1/4 PTF



Page 5

840016-50KIT

Pressure sensing block  
G1/4



Page 5

840016-51KIT

Full flow porting block  
3/4 PTF



Page 5

840028-68KIT

Full flow porting block  
G3/4



Page 5

840028-69KIT

Full flow porting block  
3/4 PTF



Page 5

840028-50KIT

Full flow porting block  
G3/4



Page 5

840028-53KIT

Pressure switch interface  
block (18D pressure switch)  
G1/2



Page 6

0337717000000000

Pneumatic pressure switch  
18D (7 to 120 psi)



Page 6

0881300000000000

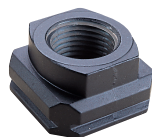
Digital pressure switch  
54D (-14.5 to 145 psi)



Page 6

54D-V110G-DD0-AA

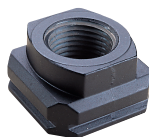
Port Adaptors  
3/8 PTF



Page 6

840015-02KIT

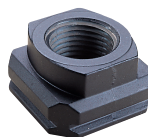
Port Adaptors  
1/2 PTF



Page 6

840015-03KIT

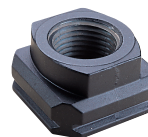
Port Adaptors  
3/4 PTF



Page 6

840015-04KIT

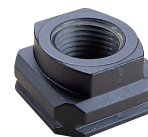
Port Adaptors  
G3/8



Page 6

840015-10KIT

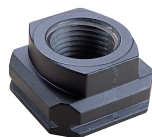
Port Adaptors  
G1/2



Page 6

840015-11KIT

Port Adaptors  
G3/4



Page 6

840015-12KIT

## Maintenance/Service

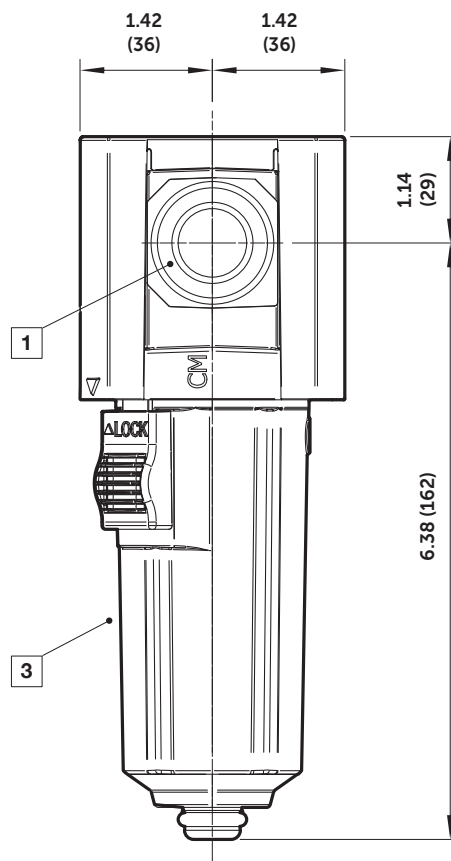
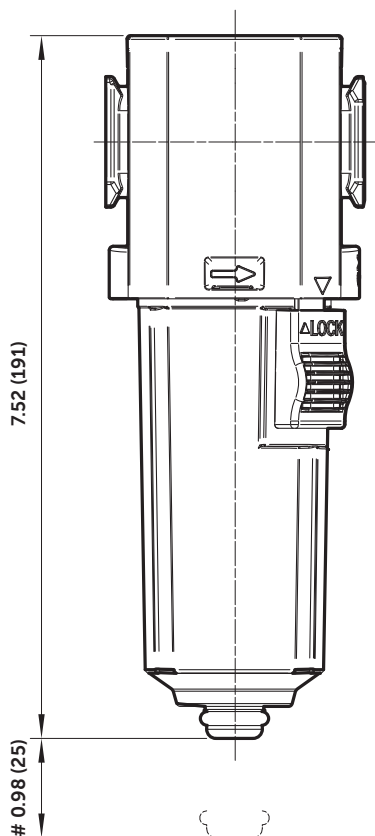
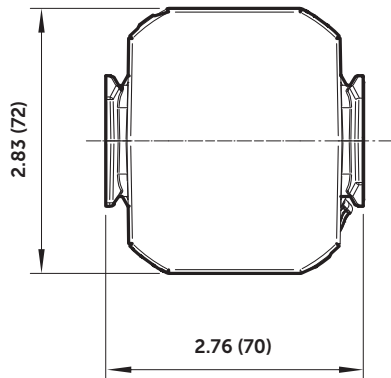
Vapor Removal filter  
element



840041-50KIT



## Dimensions

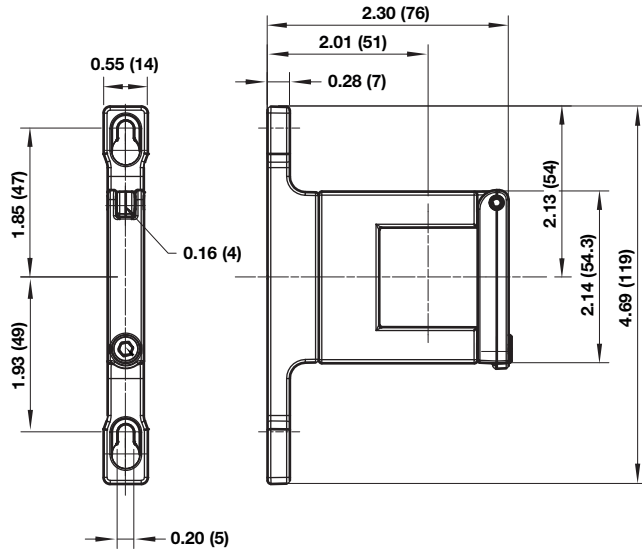


- # Minimum clearance for bowl removal
- 1 Main ports 3/8", 1/2" or 3/4"  
(ISO G/PTF)
  - 2 Transparent bowl with guard
  - 3 Metal bowl

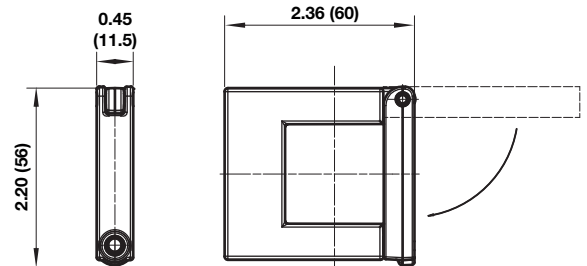


## Accessories

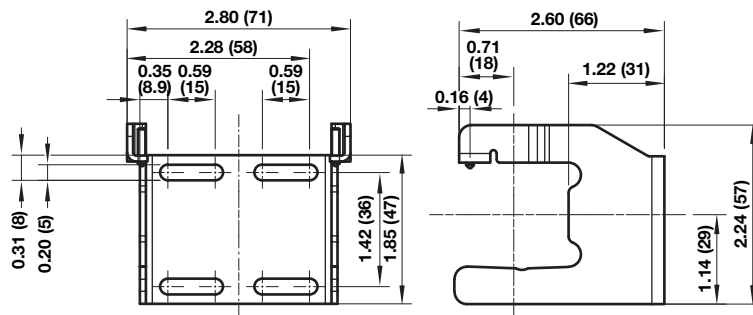
### Quikclamp® with wall bracket



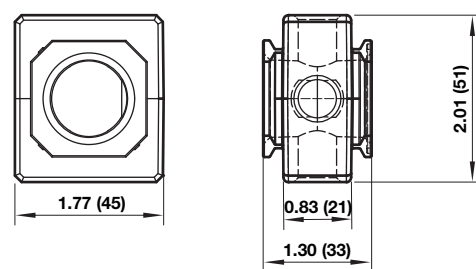
### Quikclamp®



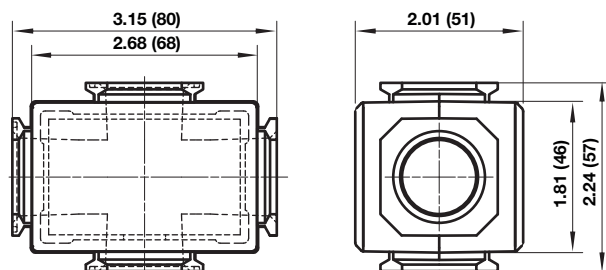
### Mounting bracket



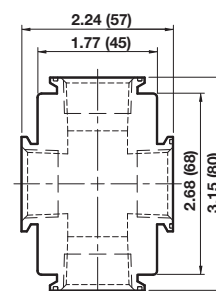
### Pressure sensing block



### Full flow porting block

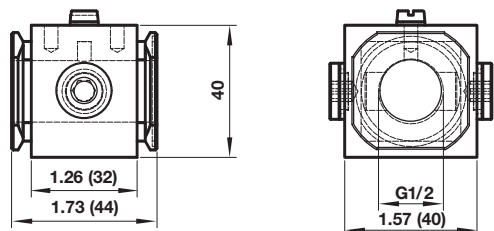


### Full flow vertical porting block

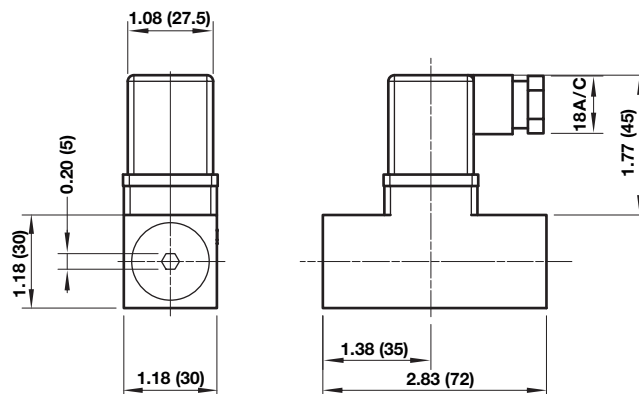




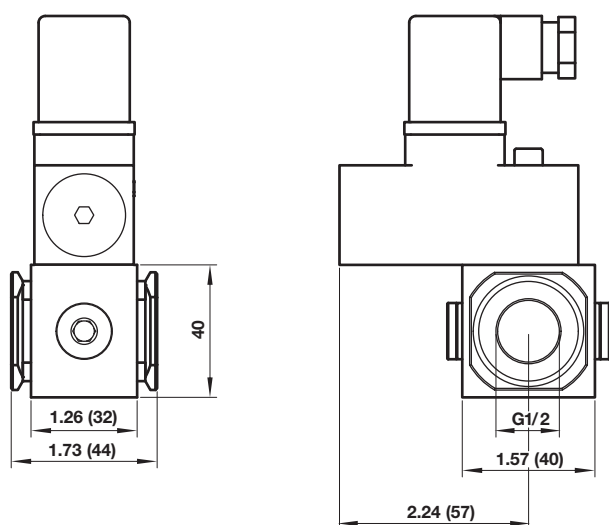
**Porting block for 18D pressure switch**



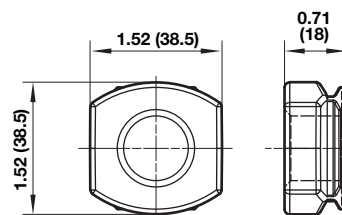
**18D Pressure switch**



**18D Porting block and 18D assembled**

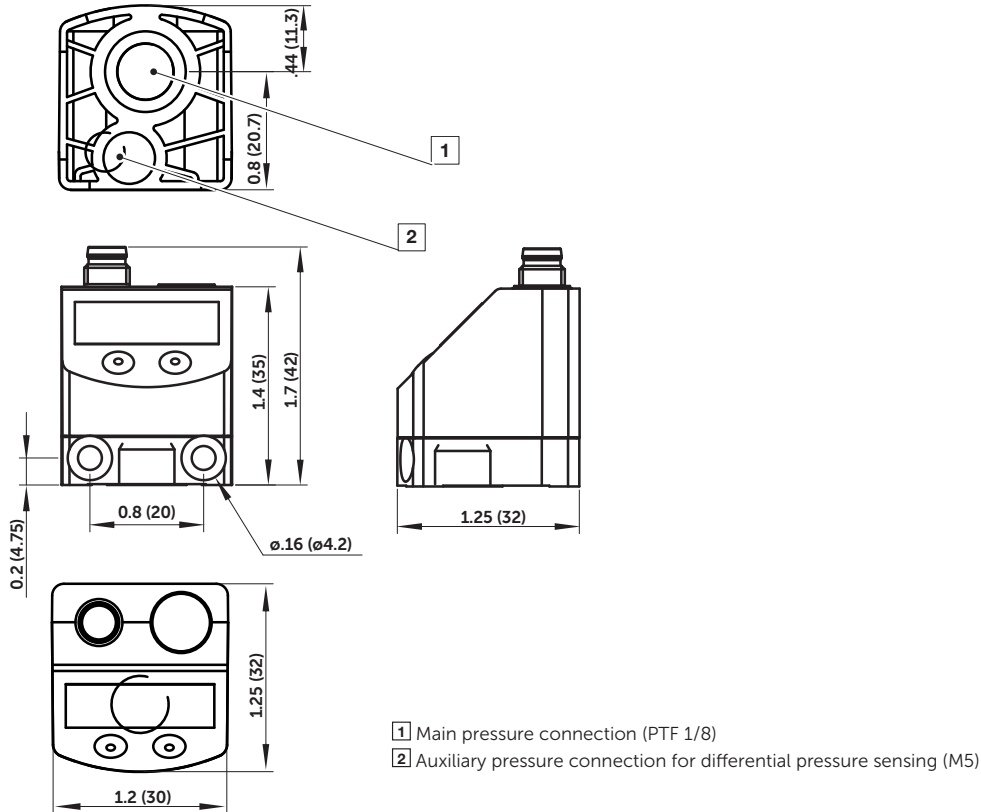


**Pipe adaptor**





## 54D Pressure switch - digital



### Warning

Improper selection, misuse, age or malfunction of components used in systems can cause failure in various modes. The system designer is warned to consider the failure modes of all component parts and to provide adequate safeguards to prevent personal injury or damage to equipment or property in the event of such failure modes. System designers and end users are cautioned to consult instruction sheets and specifications available from the factory. The system designer/end user is responsible for verifying that all requirements for the application are met.

### Warranty

The products described herein are warranted subject to seller's Standard Terms and Condition of Sale, available at seller's website.

**Proposition 65:** These products may contain chemicals known to the state of California to cause cancer, or birth defects, or other reproductive harm.