

L84M, L84C–Micro-Fog and Oil-Fog Lubricators Excelon® Plus Modular System

- Port size: 3/8" to 3/4" (PTF/ISO G)
- Excelon® Plus design allows in-line installation or modular installation with other Excelon® Plus products
- Flow sensor provides a nearly constant oil/air ratio over a wide range of flows
- Double safety lock bowl
- Metal bowl with prismatic liquid level indicator lens
- Light weight Polycarbonate bowl
- All round (360°) visibility of sightdome for ease of drip rate setting
- Choice of two oil delivery systems



Technical features

Medium:

Compressed air only

Maximum supply pressure:

Polycarbonate bowl: 145 psi (10 bar)

Metal bowl: 290 psi (20 bar)

Bowl:

6.7 ounce (0.2 liter)

Start point:

2 scfm (0.94 dm³/s)

Port size:

G3/8, G1/2, G3/4, 3/8 PTF, 1/2 PTF, 3/4 PTF

Flow:

Micro-fog : 155 scfm (73 dm³/s)
Oil-fog: 193 scfm (91 dm³/s)
at port size: 1/2", operating pressure: 91 psi (6.3 bar) and Δp: 7.25 psi (0.5 bar)

Ambient/Media temperature:

Polycarbonate bowl:

14 to +140°F (-10 to +60°C)

Metal bowl:

-4 to +149°F (-20 to +65°C)

Air supply must be dry enough to avoid ice formation at temperatures below +35°F (+2°C).

Materials:

Bowl: PC with PP guard

Metal bowl: Die cast aluminum

Body: Die cast aluminum


Body cover: ABS

Sightdome: Transparent PA

Bowl 'o'- ring: Chloroprene

Elastomers: NBR

Technical data L84 - standard models

Symbol	Port PTF	Lubricator type	Bowl	Weight lb (kg)	Model
	3/8	Micro fog	Guarded polycarbonate	0.9 (0.40)	L84M-3AP-EPN
	1/2	Micro fog	Guarded polycarbonate	0.9 (0.40)	L84M-4AP-EPN
	3/4	Micro fog	Guarded polycarbonate	0.9 (0.40)	L84M-6AP-EPN
	3/8	Micro fog	Metal with level indicator	1.1 (0.53)	L84M-3AP-EDN
	1/2	Micro fog	Metal with level indicator	1.1 (0.53)	L84M-4AP-EDN
	3/4	Micro fog	Metal with level indicator	1.1 (0.53)	L84M-6AP-EDN
	3/8	Oil fog	Guarded polycarbonate	0.9 (0.40)	L84C-3AP-EPN
	1/2	Oil fog	Guarded polycarbonate	0.9 (0.40)	L84C-4AP-EPN
	3/4	Oil fog	Guarded polycarbonate	0.9 (0.40)	L84C-6AP-EPN
	3/8	Oil fog	Metal with level indicator	1.1 (0.53)	L84C-3AP-EDN
	1/2	Oil fog	Metal with level indicator	1.1 (0.53)	L84C-4AP-EDN
	3/4	Oil fog	Metal with level indicator	1.1 (0.53)	L84C-6AP-EDN

Option selector

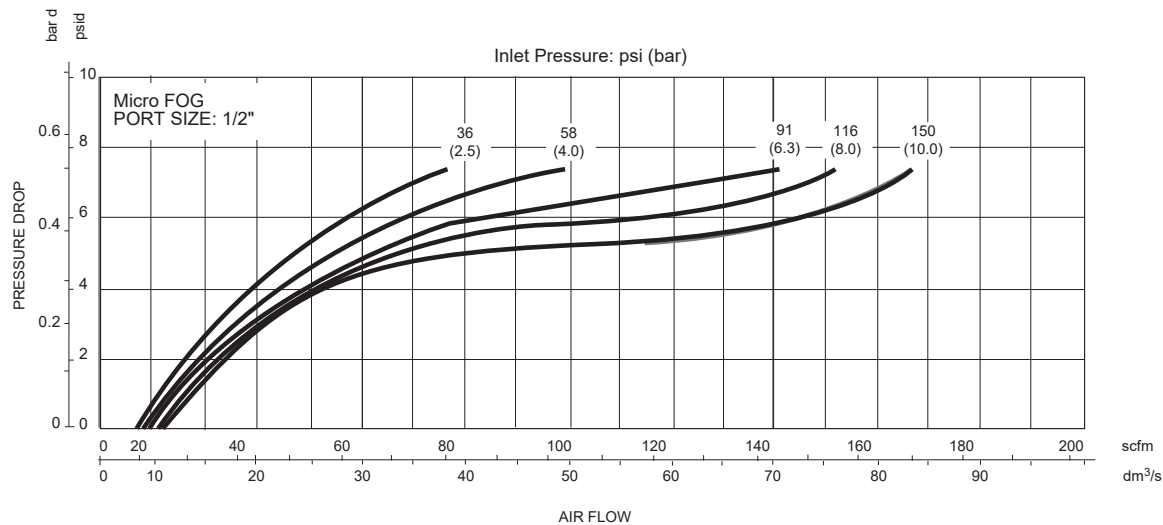
L84★-★★P-★★N

Type	Substitute			Bowl	Substitute
Oil fog lubricator	C			Metal with liquid level indicator	D
Micro fog lubricator	M			Transparent with guard	P
Port size	Substitute			Drain	Substitute
3/8"	3			Closed Bottom	E
1/2"	4			Manual	Q
3/4"	6				
Thread form	Substitute				
PTF	A				
ISO G parallel	G				

Flow characteristics

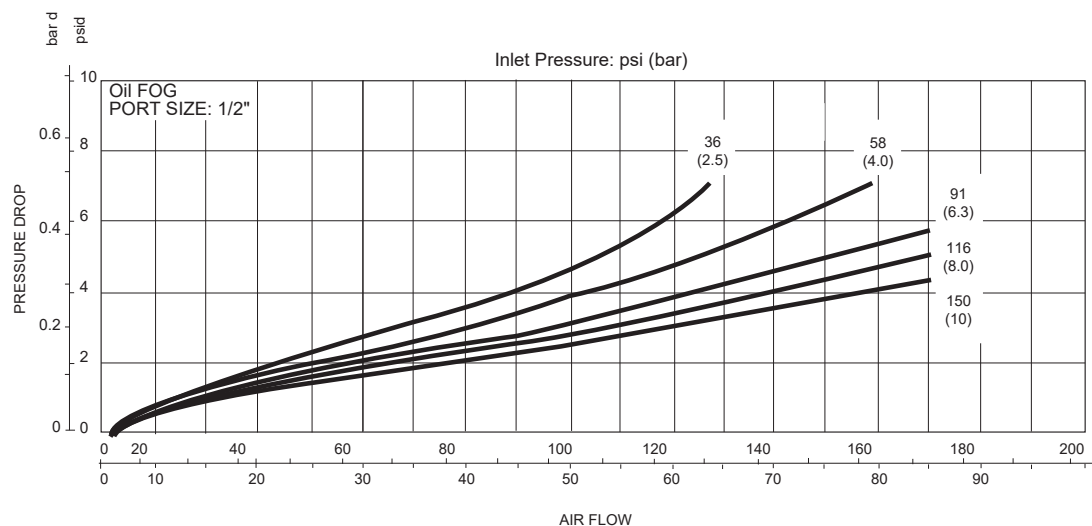
Micro fog

Port size: 1/2"



Oil fog

Port size: 1/2"



Accessories

Quikclamp®



Page 5

840014-51KIT

Quikclamp® with bracket assembled



Page 5

840014-52KIT

Hybrid Quikclamp® *1



Page 5

840014-61

Hybrid Quikclamp® with bracket assembled *1



Page 5

840014-62

Wall mounting bracket



Page 5

840024-50KIT

*1) To connect new Excelon Plus to Excelon 74/73 units. Having the same hole centers as 74 series mounting bracket. A Quikclamp adds 13.6 mm to the overall width of a combination unit

Full flow porting block 3/4 PTF



Page 6

840028-68KIT

Full flow porting block G3/4



Page 6

840028-69KIT

Full flow porting block 3/4 PTF



Page 6

840028-50KIT

Full flow porting block G3/4



Page 6

840028-53KIT

Pressure switch interface block (18D pressure switch) G1/2



Page 6

0337717000000000

Pneumatic pressure switch 18D (7 to 120 psi)



Page 6

0881300000000000

Digital pressure switch 54D (-14.5 to 145 psi)



Page 7

54D-V110G-DD0-AA

Pressure sensing block 1/4 PTF



Page 6

840016-50KIT

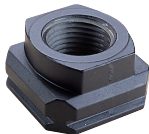
Pressure sensing block G1/4



Page 6

840016-51KIT

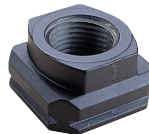
Port Adaptors 3/8 PTF



Page 6

840015-02KIT

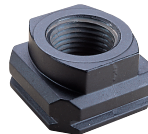
Port Adaptors 1/2 PTF



Page 6

840015-03KIT

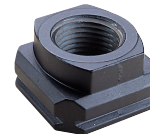
Port Adaptors 3/4 PTF



Page 6

840015-04KIT

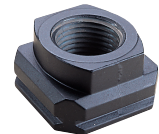
Port Adaptors G3/8



Page 6

840015-10KIT

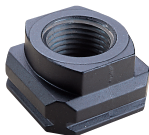
Port Adaptors G1/2



Page 6

840015-11KIT

Port Adaptors G3/4



Page 6

840015-12KIT

Quick fill nipple



18-011-024

Service kits

Lubricator bowl Guarded Poly



840025-52KIT

Lubricator bowl Metal with sight glass



840003-52KIT

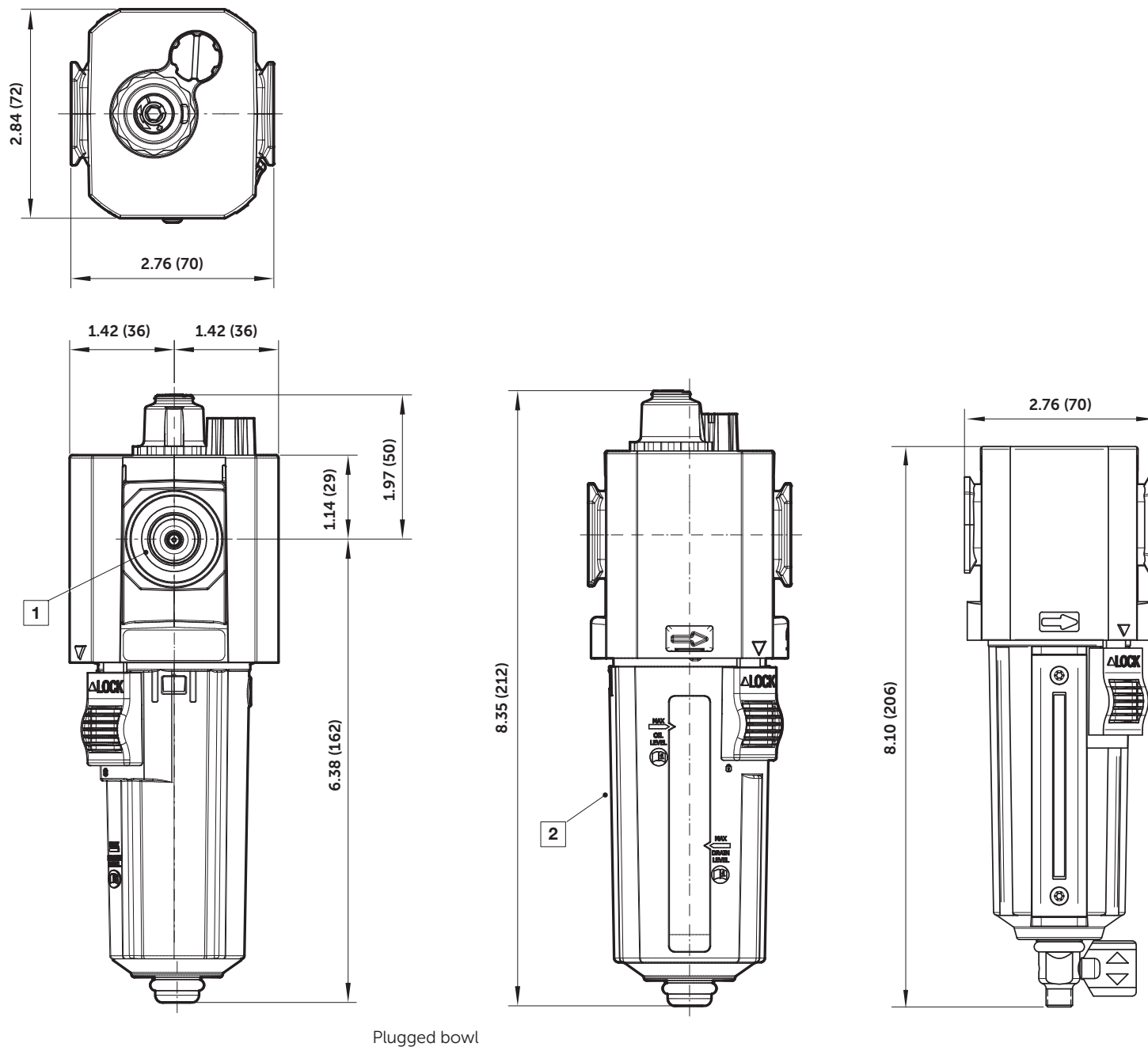
Lubricator sight dome kit



Micro fog (red) 840055-50KIT
Oil fog (green) 840055-51KIT



Dimensions

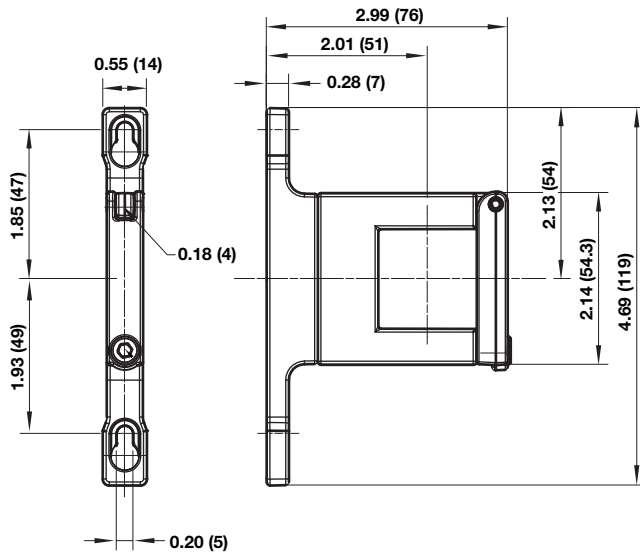


- 1 Main ports 3/8", 1/2" or 3/4" (ISO G/PTF)
- 2 Transparent bowl with guard

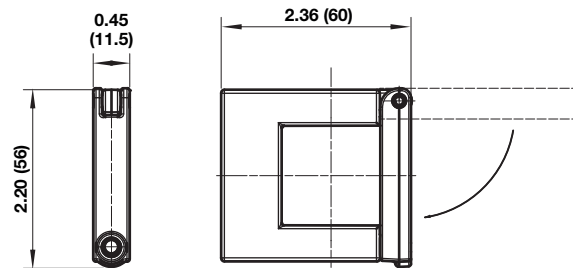


Accessories

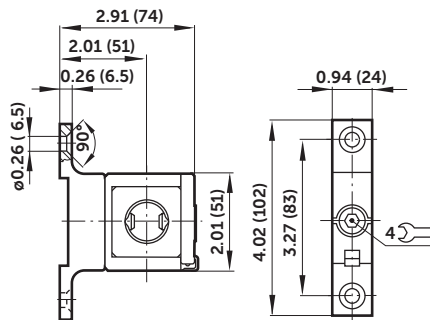
Quikclamp® with wall bracket



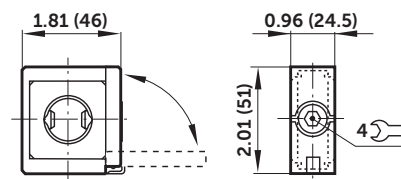
Quikclamp®



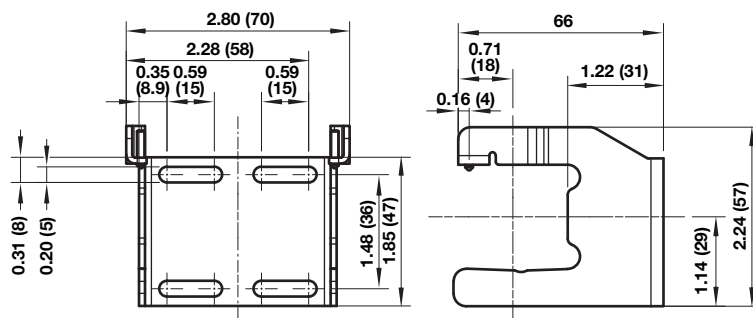
Hybrid-Quikclamp® with wall bracket



Hybrid-Quikclamp®

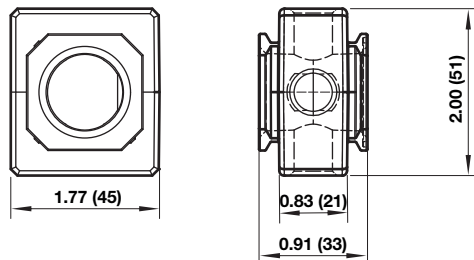


Mounting bracket

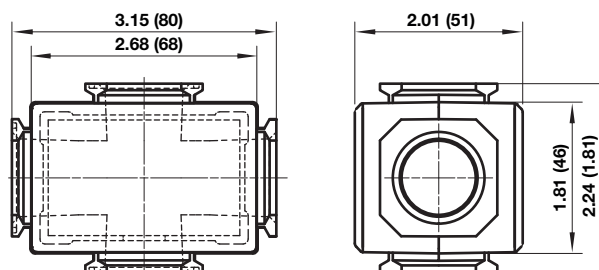




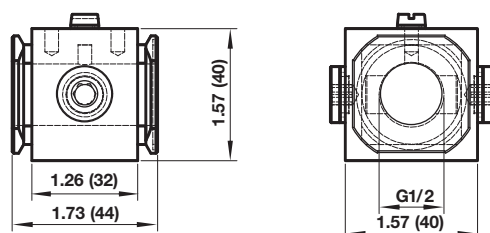
Pressure sensing block



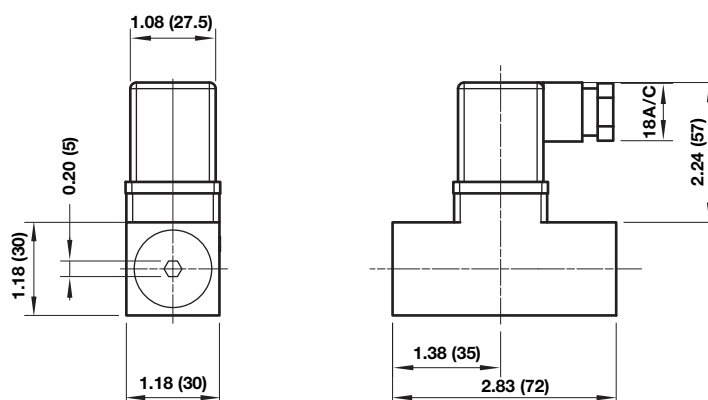
Full flow porting block



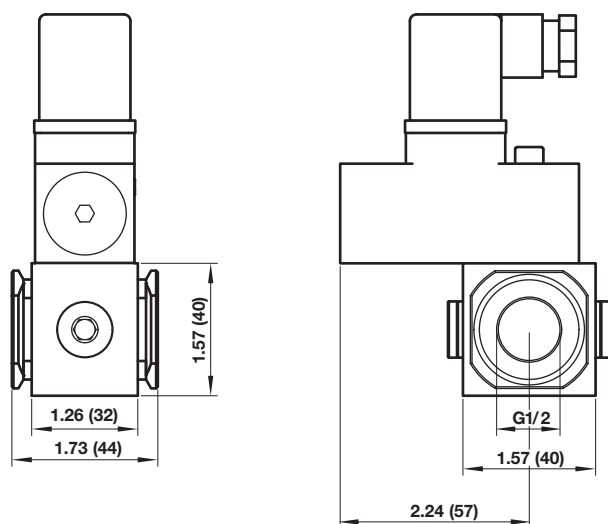
Porting block for 18D pressure switch



18D Pressure switch



18D Porting block and 18D assembled



Pipe adaptor

