

T84T – 3/2 shut-off valve Excelon® Plus Modular System

- Port size: 3/8" to 3/4" (PTF/ISO G)
- Excelon® Plus design allows in-line installation or modular installation with other Excelon® Plus products
- 3/2 way function
- Threaded exhaust port
- Lockable in closed position with padlock



Technical features

Medium:

Compressed air only

Maximum supply pressure:

290 psi (20 bar)

Port size:

G3/8, G1/2, G3/4, 3/8 PTF,
1/2 PTF, 3/4 PTF

Flow:

1/2": 343 scfm (162 dm³/s)
at 91 psi (6.3 bar) and Δp 7 psi
(0.5 bar) pressure drop,
3.8 scfm (1.8 dm³/s) from
OUT to exhaust port.

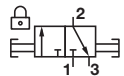
Ambient/Media temperature:

-4 to +149°F (-20 to +65°C)
Air supply must be dry enough
to avoid ice formation at
temperatures below +35°F
(+2°C).

Materials:

Body: Die cast aluminum
Body covers: ABS
Elastomers: NBR
Valve: Brass

Technical data T84T - standard models

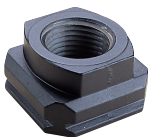
Symbol	Port PTF	Function	Valve type	Exhaust port forms	Weight lb (kg)	Model
	3/8	3/2	Ball valve	Exhaust port threaded PTF1/4	1.0 (0.48)	T84T-3AA-B1N
	1/2	3/2	Ball valve	Exhaust port threaded PTF1/4	1.0 (0.48)	T84T-4AA-B1N
	3/4	3/2	Ball valve	Exhaust port threaded PTF1/4	1.0 (0.48)	T84T-6AA-B1N

Option selector






T84T-★★A-B1N

Function	Substitute	Thread form	Substitute
3/2	T	PTF	A
		ISO G parallel	G
		Port size	Substitute
		3/8"	3
		1/2"	4
		3/4"	6

Accessories

Quikclamp®  Page 4 840014-51KIT	Quikclamp® with bracket assembled  Page 4 840014-52KIT	Hybrid Quikclamp® *1  Page 4 840014-61	Hybrid Quikclamp® with bracket assembled *1  Page 4 840014-62	Wall mounting bracket  Page 4 840024-50KIT
Full flow porting block 3/4 PTF  Page 5 840028-68KIT	Full flow porting block G3/4  Page 5 840028-69KIT	Full flow porting block 3/4 PTF  Page 5 840028-50KIT	Full flow porting block G3/4  Page 5 840028-53KIT	
Pressure switch interface block (18D pressure switch) G1/2  Page 5 0337717000000000	Pneumatic pressure switch 18D (7 to 120 psi)  Page 5 0881300000000000	Digital pressure switch 54D (-14.5 to 145 psi)  Page 6 54D-V110G-DD0-AA	Pressure sensing block 1/4 PTF  Page 5 840016-50KIT	Pressure sensing block G1/4  Page 5 840016-51KIT
Port Adaptors 3/8 PTF  Page 5 840015-02KIT	Port Adaptors 1/2 PTF  Page 5 840015-03KIT	Port Adaptors 3/4 PTF  Page 5 840015-04KIT	Port Adaptors G3/8  Page 5 840015-10KIT	Port Adaptors G1/2  Page 5 840015-11KIT
Port Adaptors G3/4  Page 5 840015-12KIT				

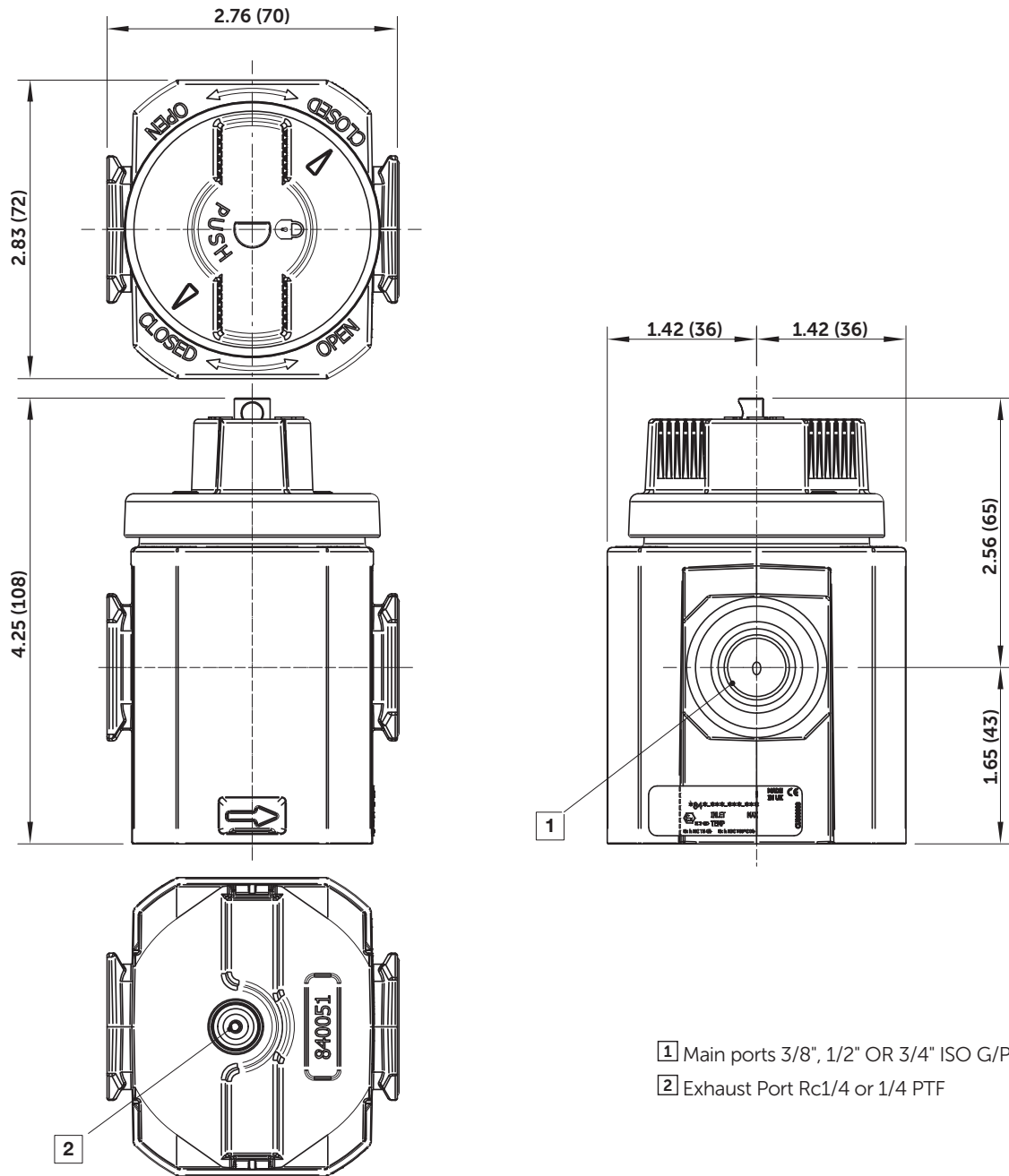
Silencer

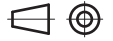
Padlock  840055-01KIT	Lockout device  840055-02KIT	Porous plastic silencer *3) G1/4  M/S2	Plastic silencer *3) 1/4 NPT  C/S2	Sinter bronze silencer *3) 1/4 PTF  MS002A
---	--	--	---	--

*3) Max. pressure of silencers listed in this data sheet : 10bar. For pressure higher than 10bar please contact IMI Norgren



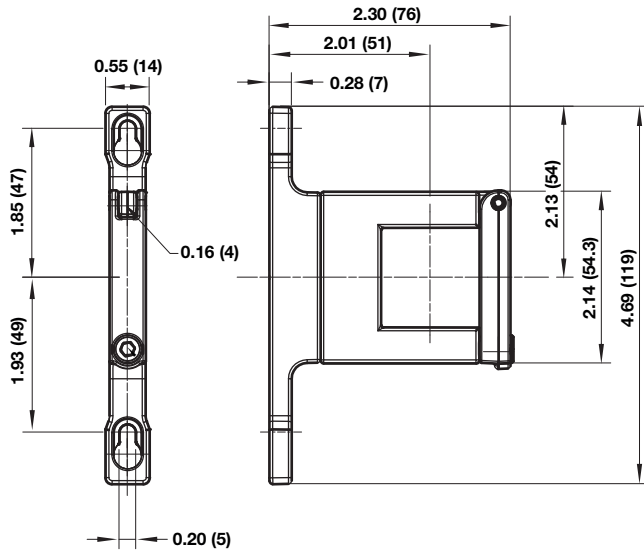
Dimensions



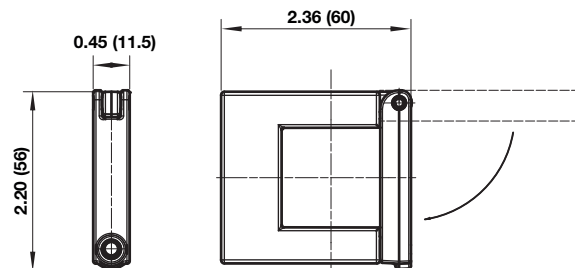


Accessories

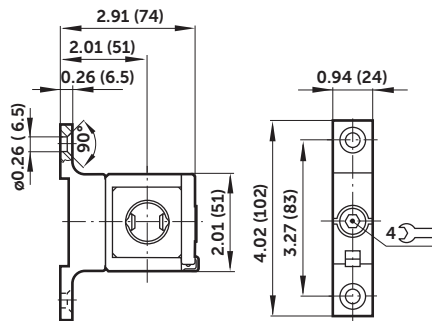
Quikclamp® with wall bracket



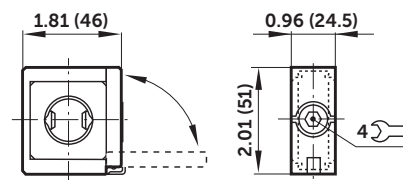
Quikclamp®



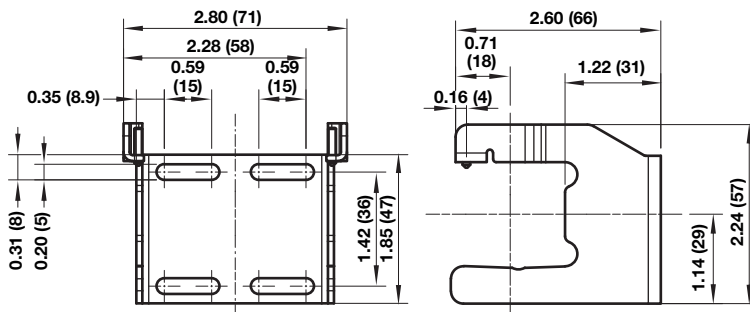
Hybrid-Quikclamp® with wall bracket



Hybrid-Quikclamp®

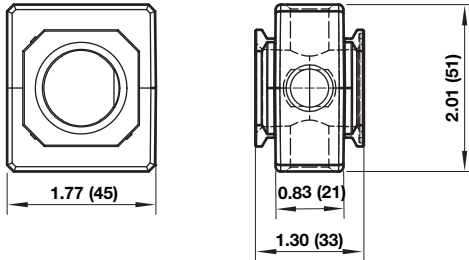


Mounting bracket

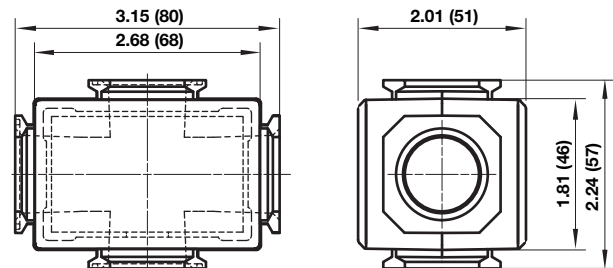




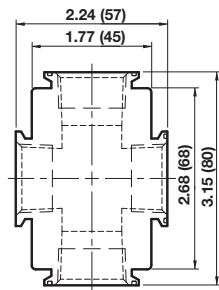
Pressure sensing block



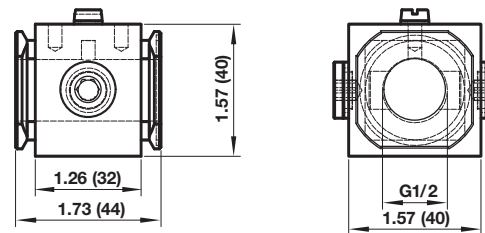
Full flow porting block



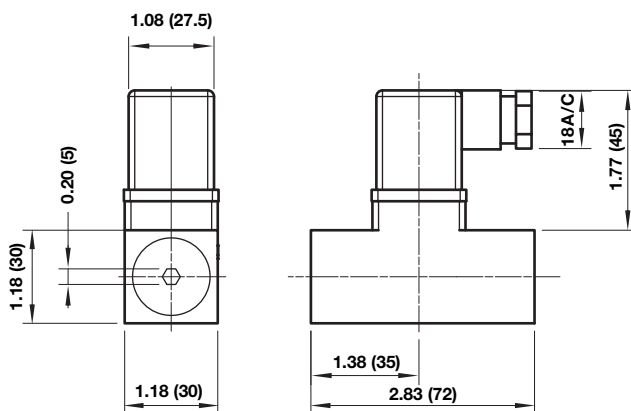
Full flow vertical porting block



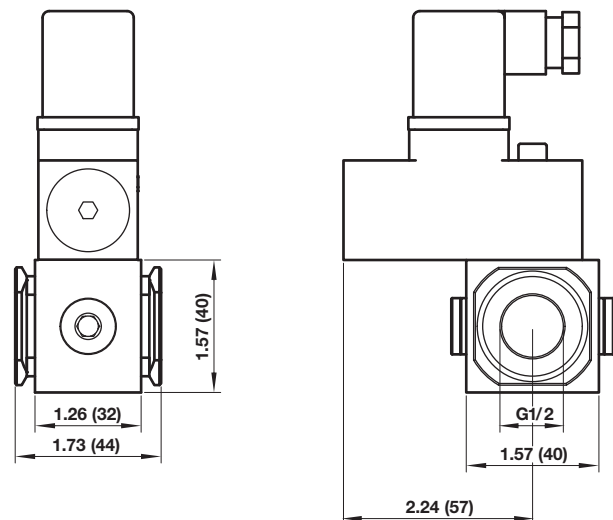
Porting block for 18D pressure switch



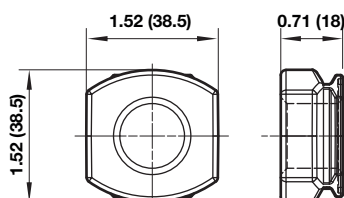
18D Pressure switch

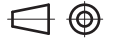


18D Porting block and 18D assembled

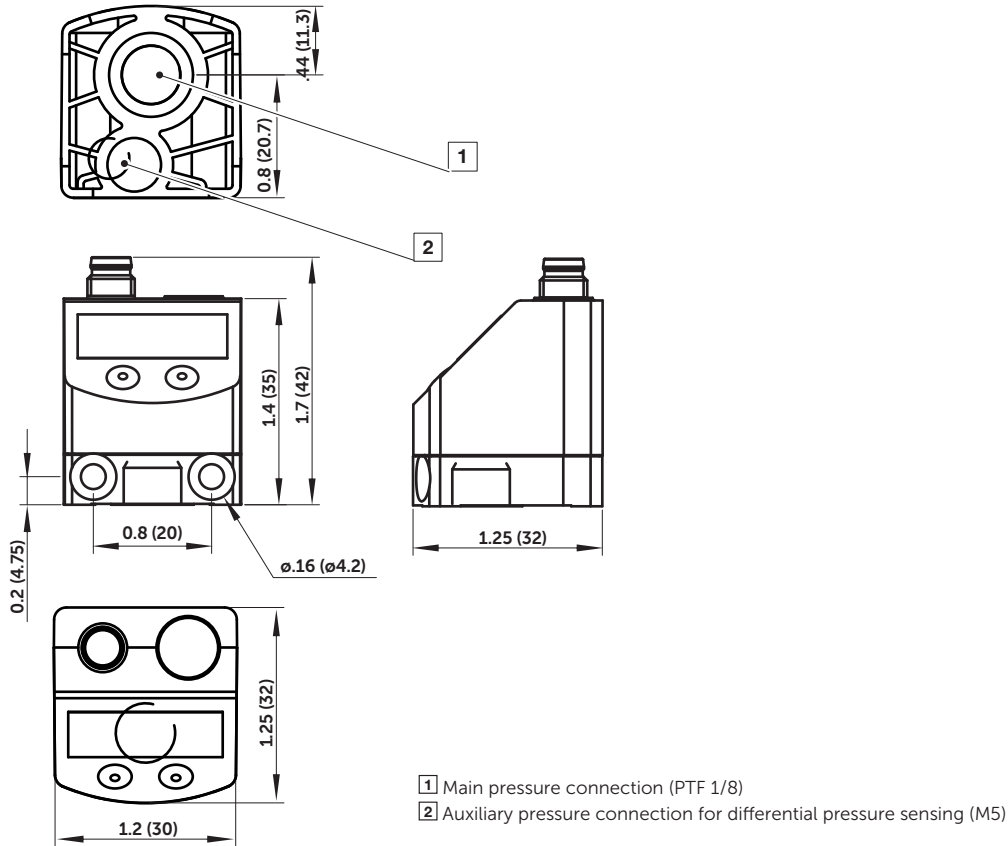


Pipe adaptor





54D Pressure switch - digital



Warning

Improper selection, misuse, age or malfunction of components used in systems can cause failure in various modes. The system designer is warned to consider the failure modes of all component parts and to provide adequate safeguards to prevent personal injury or damage to equipment or property in the event of such failure modes. System designers and end users are cautioned to consult instruction sheets and specifications available from the factory. The system designer/end user is responsible for verifying that all requirements for the application are met.

Warranty

The products described herein are warranted subject to seller's Standard Terms and Condition of Sale, available at seller's website.

Proposition 65: These products may contain chemicals known to the state of California to cause cancer, or birth defects, or other reproductive harm.