

IMI Norgren Guardian Range

Suitable for a wide range of Industrial Automation applications



IN STOCK!

Contents

03 The products our customers need

04 Actuators

05 Solenoid valves

07 Air Preparation



Engineering GREAT solutions through people, products, innovation and service

IMI Precision Engineering is a world-leader in fluid and motion control. Building close, collaborative relationships with our customers, we gain a deep understanding of their engineering needs and then mobilise our resources and expertise to deliver distinctive products and solutions.

Wherever precision, speed and engineering reliability are essential, our global footprint, problem-solving capability and portfolio of high performance products enables us to deliver GREAT solutions which help customers tackle the world's most demanding engineering challenges.

> **Reliability**

We deliver and support our high quality products through our global service network.

> **High performance products**

Calling on a world-class portfolio of fluid and motion control products including IMI Norgren, IMI Buschjost, IMI FAS, IMI Herion and IMI Maxseal. We can supply these singly, or combined in powerful customised solutions to improve performance and productivity.

> **Partnership & Problem Solving**

We get closer to our customers to understand their exact challenges.



The products our customers need

About IMI Norgren Guardian Range

Attractively priced and readily available from stock, the IMI Norgren Guardian range is suitable for a wide range of industrial applications. It comes with the high standard of service and support you would expect from IMI Precision Engineering.

- > Proven IMI Norgren quality
- > Flexible options and accessories
- > Reliable, simple and easy to install



Actuators

Our range of profile ISO cylinders are available with various mounting options to suit most applications.

PCA/702 Series ISO Standard Cylinder

Double acting



General Specifications

- > Cylinder and mounting features conform to ISO15552
- > Bore diameters: 32, 40, 50, 63, 80, 100, 125 mm
- > Stroke length: 5 ... 2000 mm
- > Operating pressure: 1 ... 10 bar (14 ... 145 psi)
- > Adjustable cushioning
- > Magnetic switches can be mounted flush with the profile

Accessories

Front flange B, G



Foot mounting C



Rear Clevis D



Rear eye R



Wide Hinge SW



Piston rod clevis F



Universal piston rod eye



Piston rod swivel AK



Service kit



Magnetic Switch



CM/71 Series Compact Cylinder

Single & Double acting



General specifications

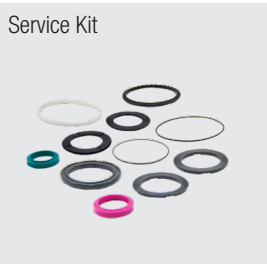
- > Mounting features conform to ISO15524 for bore size 32~100mm
- > Bore diameters: 12, 16, 20, 25, 32, 40, 50, 63, 80, 100 mm
- > Magnetic piston
- > Mechanical cushion
- > Magnetic switches can be mounted flush with the profile

Accessories

Magnetic Switch



Service Kit



Solenoid Valves

Our range of 3/2, 5/2 and 5/3 way directional control valves are available in spring loaded or solenoid actuated options.

VCB10 Series Solenoid Valve

Single Solenoid



Double Solenoid



General Specifications

- > Compact design
- > Fluid/ambient temperature: -5°C ... +50°C
- > Operating pressure: 1.5 ... 7 bar
- > Port size: G1/8
- > Push type manual override
- > Ideal for sorting and packaging applications where fast response times are needed

VCB22 Series Solenoid Valve

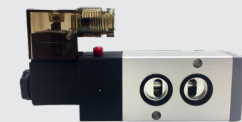
Single Solenoid



Double Solenoid



NAMUR Option

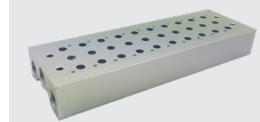


General Specifications

- > Fluid/ambient temperature -5°C...+70°C
- > Operating pressure 1.5 ... 8 bar
- > Port size from M5, G1/8 ... G1/2
- > 3/2, 5/2, 5/3 way
- > NAMUR option available
- > High flow rate
- > Push and turn to lock manual override
- > Connector with light as standard
- > Sub-base system max. to 17 valves
- > Suitable for most industrial automation applications

Accessories

Subbase



Blanking plate



NAMUR conversion plate



Coil connector
15mm industrial standard



Coil connector
22mm industrial standard
(for 24 V d.c & 220 V a.c)



Coil connector
22mm industrial standard
(for 24 V a.c.,
110 V a.c. & 240 V a.c.)



15mm coil



22mm coil
24 V d.c & 220 V a.c



22mm coil
24 V d.c & 220 V a.c



Air Preparation

Our full range of general purpose air preparation is simple and ready to install for efficient air preparation.

49 Series FRL

Filter
F49G



Regulator
R49G



Lubricator
L49C



Filter-regulator
B49G



Combination unit
C49G



Filter-regulator lubricator
BL49



General Specifications

- > Filter, regulator, lubricator and combination units
- > Predefined options for ease of ordering
- > Operating pressure: 0.5 to 8.5 bar
- > G1/8 to G1/2 port sizes
- > Flow rate up to 50 l/s for G1/2
- > Ambient/Media temperature: 0°C ... +60°C
- > Integrated gauge reduces mounting time
- > Push to lock adjusting knob and bowl cover clip with audible click for increased safety

Accessories

Lubricator bowl



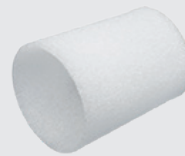
Filter bowl



Square gauge



Filter element
5 µm & 40 µm



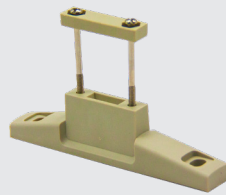
C Bracket



L Bracket



T Bracket



IMI Precision Engineering operates four global centres of technical excellence and a sales and service network in 50 countries, as well as manufacturing capability in the USA, Germany, China, UK, Switzerland, Czech Republic, Mexico and Brazil.

For information on all IMI Precision Engineering companies visit

www.imi-precision.com

Supported by distributors worldwide.

IMI

Precision Engineering


Norgren, Buschjost, FAS, Herion and Maxseal are registered trademarks of IMI Precision Engineering companies.

Due to our policy of continuous development, IMI Precision Engineering reserve the right to change specifications without prior notice.

z9292BR en/05/19

Selected Images used under license from Shutterstock.com

*Engineering
GREAT
Solutions*



 **IMI NORGREN**

 **IMI BUSCHJOST**

 **IMI FAS**

 **IMI HERION**

 **IMI MAXSEAL**

For further information, scan this QR code or visit www.imi-precision.com

