

## Pressure Protection Valves 223-Series

### Features

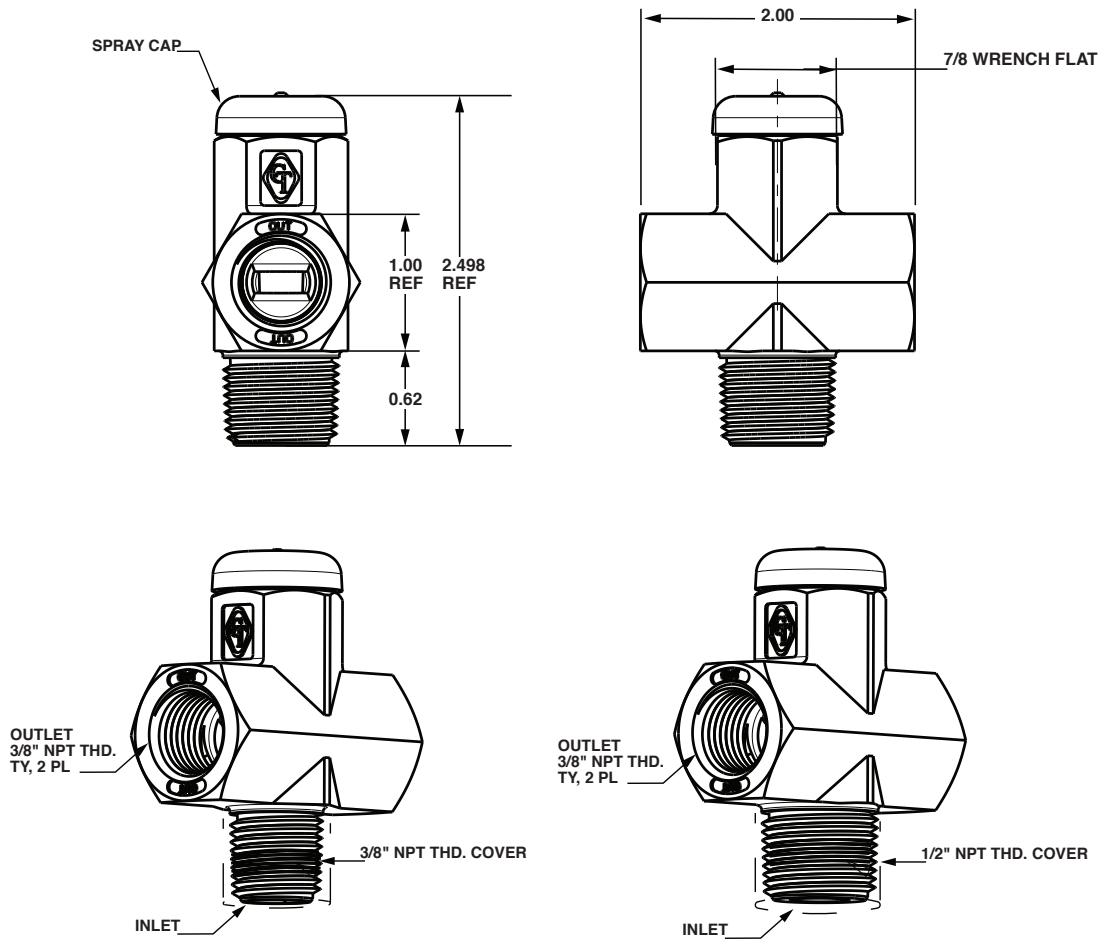
Norgren GT Development 223 Series Pressure Protection Valves are designed for convenient, in-tank mounting, with either 3/8" or 1/2" NPT threads. Configuration includes dual outlets, with a variety of closing pressures to best match the customer's application.



### Performance

<b>Function</b>	The Pressure Protection Valve assembly is intended to isolate a portion of a vehicle air system if a leak occurs, so that the integrity of the remaining system is retained. This valve to mount on an air tank.
<b>Limitations</b>	The Pressure Protection Valve assembly is designed for use on vehicle air systems with a normal duty cycle between 100 and up to 150 PSIG in a temperature range of -40°F to +200°F. The valve, as mounted on the vehicle, is unprotected from the environment and is subjected to vibration conditions similar to the vehicle.
<b>Part Number</b>	223-XXX
<b>Opening and Closing Performance</b>	Refer to Pressure Protection Valve Cross Reference document.
<b>Air Line Connection</b>	Threaded 3/8" NPT and 1/2" NPT inlet fittings and 1/4" NPT and 3/8" NPT female outlet.
<b>Mounting</b>	Air tank
<b>Material</b>	Zamak 3

## Dimensions (Inches)



### Warning

Improper selection, misuse, age or malfunction of components used in commercial vehicle systems can cause failure in various modes. The system designer is warned to consider the failure modes of all component parts used in commercial vehicle systems and to provide adequate safeguards to prevent personal injury or damage to equipment or property in the event of such failure modes. System designers and end users are cautioned to consult instruction sheets and specifications available from the factory. The system designer/end user is responsible for verifying that all requirements for the application are met.

### Warranty

The products described herein are warranted subject to seller's Standard Terms and Condition of Sale, available at seller's website.