

# Herion Solenoid operated valve

## 4 Way (4/2, 5/2, 5/3) with soft seal

Noise reduction through integrated pilot valve silencer

High flow performance

Simplified soft seal system, incorporating HERION's unique T-Seal

Low maintenance and easy to service

Manual override standard on most models

Quick change of solenoids

Compact construction

Many configurations - air return, spring return or double solenoids



### Technical data

#### Port Sizes

1/8", 1/4", 3/8" and 1/2" NPT

#### Fluid

Filtered air, lubricated or non-lubricated

#### Fluid Temperature

15° to 105°F

#### Ambient Temperature

15° to 140°F

#### Materials

##### Housing

Clear anodized aluminum

Seals: BUNA N

#### Options

Manifold mounting

External pilot adapter

Hazardous duty ("explosion-proof") solenoids with UL, CSA, CENELEC and other international listings

"G" Thread ports available (ISO 228/1)

Polyurethane seals

Different pilot valve / solenoid operators available for low power, intrinsically safe, etc.

Variety of manual overrides: detent, non-detent, brass push button

Description	Port size	Nom. size (NPT)	Cv factor (mm)	Operating pressure	Dim. dwg. (psi)	Spare parts	Order No.	
							Valve kit	Solenoid
4 Way (4/2) solenoid – air return	1/8"	4	0.5	25-150	2	8110767	2630670E	.0162
				25-150	2	8110767	2630670X6	.0163
4 Way (5/2) solenoid – air return	1/4"	6	1.4	25-150	5	8110831	2636070	.0247
	3/8"	10	2.6	30-150	5	8110833	2637070	.0247
4 Way (5/2) solenoid – spring return	1/2"	12	3.5	30-150	5	8110833	2637071	.0247
	1/8"	4	0.5	50-150	3	8110769	8110134E	.0162
4 Way (5/2) Double solenoid impulse				50-120	3	8110769	8110134X6	.0163
	1/4"	6	1.4	50-150	6	8110832	8110132	.0247
	3/8"	10	2.6	50-150	6	8110825	8110443	.0247
	1/2"	12	3.5	50-150	6	8110825	8110413	.0247
4 Way (5/2) Double solenoid COE	1/8"	4	0.5	25-150	4	8110768	2630770E	.0162
				25-120	4	8110768	2630770X6	.0163
	1/4"	6	1.4	25-150	8	8110827	2636270	.0247
	3/8"	10	2.6	30-150	7	8110826	2637270	.0247
4 Way (5/3) Double solenoid COP	1/2"	12	3.5	30-150	7A	8110826	2637271	.0247
	1/4"	6	1.1	50-150	8A	557586X2	2637370	.0247
4 Way (5/3) Double solenoid APB	1/2"	12	2.7	50-150	7A	8110756X1	2636370	.0247
	1/4"	6	1.1	50-150	8A	0557586X2	2636570	.0247
4 Way (5/3) Double solenoid APB	1/2"	12	2.7	50-150	7A	8110756X1	2637570	.0247
	1/4"	6	1.1	50-150	8A	0557586X2	2636470	.0247
	1/2"	12	2.7	50-150	7A	8110756X1	2637470	.0247

# Herion Solenoid operated valve

4 Way (4/2, 5/2, 5/3) with soft seal

### Hazardous duty applications

Solenoid	Power consumption			Remarks	NEMA classification
	DC	Inrush	AC Holding		
3720	1.4W	-	-	1/2" NPT 18" leads	4 X 7.9
3722	5 W	-	-		
3723	-	6 VA	6 VA		
3726	13 W	-	-		
3727	-	15 VA	15 VA		

These solenoid comply with insulation class H, and are for use in Class 1, Division 1,2 Groups A, B, C, D; Class 2, Division 1, 2 Groups E, F, G hazardous locations as defined in the National Electric Code.

NOTE: Solenoid valve part numbers change for low watt coil.

### Solenoids

Solenoid	Power consumption			Remarks	NEMA classification
	DC	Inrush	AC Holding		
0162	-	6 VA	6VA	with DIN Connector	4
0163	3 W	-	-		
0247	-	18 VA	10 VA		
0240	1.6 W	-	-		
0241	-	10 VA	5VA		
0263	1.6W	-	-		

### Connector options

Solenoid Series	Standard cable clamp	Optional connector part numbers			
		1/2" NPT	Lighted - Cable clamp		
			24 VAC, DC	120 VAC	220 VAC
02XX	0570275	0661374	0570818	0570816	0570817
016X	0661464	8110519	0664811	8110548	8110549

Fig. 2 – 1/8" valve solenoid-air return

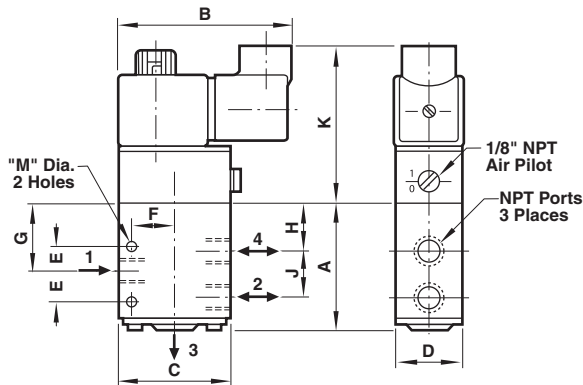
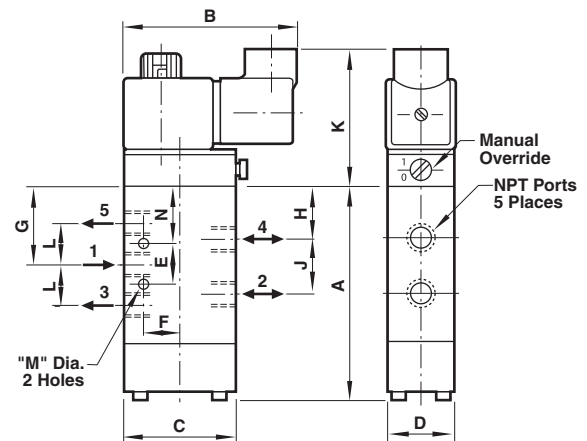


Fig. 3 – 1/8" valve solenoid-spring return



# Herion Solenoid operated valve

4 Way (4/2, 5/2, 5/3)

Fig. 4 – 1/8" valve double solenoid

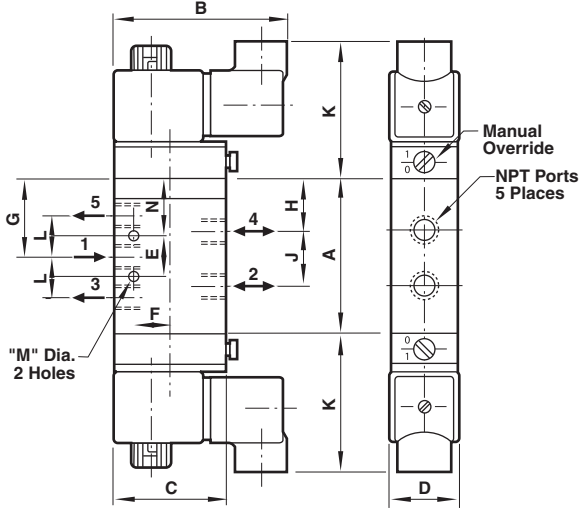


Fig. 5 – 1/2" valve solenoid-air return

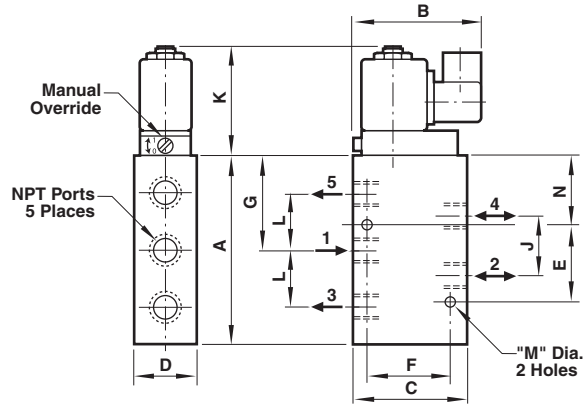
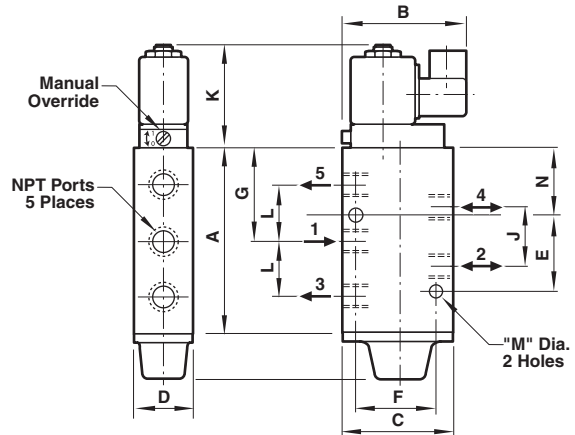
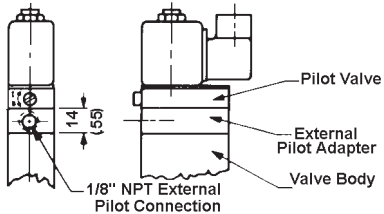


Fig. 6 – 1/4" - 1/2" valve solenoid spring return



## External pilot adapter

Kit part number	Used for
8110796	1/8" soft seal valves
8110138	1/4" to 1/2" soft seal valves except 5/3 position valves
8110138X01	1/2" 5/3 position valves only
8110138X02	1/4" 5/3 position valves only



# Herion Solenoid operated valve

4 Way (4/2, 5/2, 5/3) with soft seal

Fig. 7 – 3/8" - 1/2" valve 2 position double solenoid  
Fig. 7A – 1/2" valve 3 position double solenoid

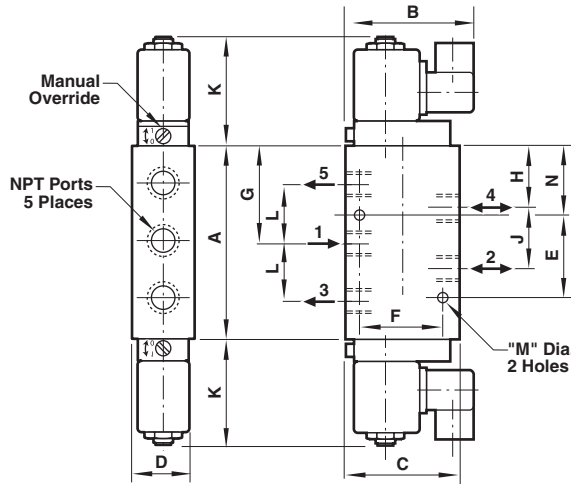
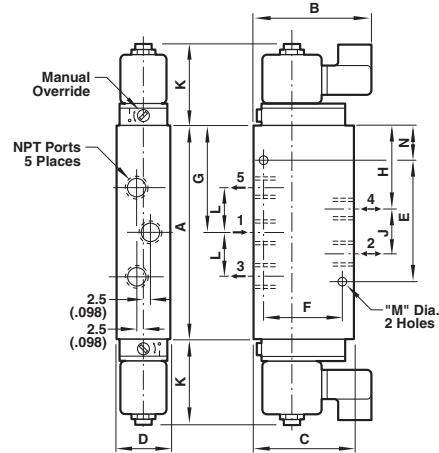


Fig. 8 – 1/4" valve 2 position double solenoid  
Fig. 8A – 1/4" valve 3 position double solenoid



Drawing	Valve size	Dimensions												
		A	B	C	D	E	F	G	H	J	K	L	M	N
2	1/8"	47 (1.85)	80 (3.15)	40 (1.57)	25 (.98)	11 (.43)	14 (.55)	24 (.95)	15 (.59)	18 (.71)	67 (2.64)	-	5.5 (.22)	-
3	1/8"	84 (3.31)	80 (3.15)	40 (1.57)	25 (.98)	15.8 (.62)	14 (1.5)	30.3 (1.20)	21.3 (.84)	18 (.71)	67 (2.64)	16 (.63)	5.2 (.20)	22.4 (.88)
4	1/8"	60.5 (2.38)	80 (3.15)	40 (1.57)	25 (.98)	15.8 (.62)	14 (.5)	30.3 (1.20)	21.3 (.84)	18 (.71)	67 (2.64)	16 (.63)	5.2 (.20)	22.4 (.88)
5	1/4"	84 (3.31)	66 (2.60)	55 (2.17)	30 (2.18)	67 (2.64)	40 (1.57)	37 (1.46)	-	24 (.94)	61 (2.40)	24 (.94)	7 (.28)	12 (.47)
5	3/8"	115 (4.53)	73 (2.87)	65 (2.56)	35 (1.38)	46 (1.81)	46 (1.81)	56 (2.20)	-	33 (1.30)	61 (2.40)	33 (1.30)	7 (.28)	39 (1.54)
5	1/2"	115 (4.53)	73 (2.87)	65 (2.56)	35 (1.38)	46 (1.81)	46 (1.81)	56 (2.20)	-	33 (1.30)	61 (2.10)	33 (1.30)	7 (.28)	39 (1.54)
6	1/4"	102 (4.02)	66 (2.60)	55 (2.17)	30 (1.18)	67 (2.64)	40 (1.57)	51 (2.01)	-	24 (.94)	61 (2.40)	24 (.94)	7 (.28)	14 (.55)
6	3/8"	111 (4.37)	73 (2.87)	65 (2.56)	35 (1.38)	46 (1.81)	46 (1.81)	56 (2.20)	-	33 (1.30)	61 (2.40)	33 (1.30)	7 (.28)	39 (1.54)
6	1/2"	111 (4.37)	73 (2.87)	65 (2.56)	35 (1.38)	46 (1.81)	46 (1.81)	56 (2.20)	-	33 (1.30)	61 (2.40)	33 (1.30)	7 (.28)	39 (1.54)
7	3/8"	111 (4.37)	73 (2.87)	65 (2.56)	35 (1.38)	46 (1.81)	46 (1.81)	56 (2.20)	46 (1.81)	33 (1.30)	61 (2.40)	33 (1.30)	7 (.28)	39 (1.54)
7	1/2"	111 (4.37)	73 (2.87)	65 (2.56)	35 (1.38)	46 (1.81)	46 (1.81)	56 (2.20)	46 (1.81)	33 (1.30)	61 (2.40)	33 (1.30)	7 (.28)	39 (1.54)
8	1/4"	102 (4.02)	66 (2.60)	55 (2.17)	30 (1.18)	67 (2.64)	40 (1.57)	51 (2.01)	-	24 (.94)	61 (2.40)	24 (.94)	7 (.28)	14 (.55)
7A	1/2"	174 (6.85)	74 (2.91)	70 (2.76)	40 (1.57)	50 (1.97)	50 (1.97)	87 (3.43)	71 (2.80)	33 (1.30)	61 (2.40)	33 (1.30)	7 (.28)	71 (2.80)
8A	1/4"	122 (4.80)	66 (2.60)	55 (2.17)	30 (1.18)	67 (2.64)	40 (1.57)	61 (2.41)	49 (1.93)	24 (.94)	61 (2.40)	24 (.94)	7 (.28)	25 (.98)

Dimensions in mm (inches)