

High flow performance

Immediate quality sealing using silicone free U-packing.



Technical data

Medium:

Compressed air

Operating pressure:

3 to 150 psig (.2 to 10 bar)

Fluid/Ambient temperature:

32°F to 140°F (0°C to 60°C)

Air supply must be dry enough to avoid ice formation at temperatures below 35°F

Tube size:

5/32, 1/4, 5/16, 3/8, 1/2 inch

Release buttons in grey

4, 6, 8, 10, 12 mm

Release buttons in red



Tubing type:

Nylon 11 or 12

Polyurethane 85, 95 or 98 durometer

Materials

Body:

5/32", 1/4", 5/16",

4, 6, 8 mm: PBT,

3/8, 1/2 inch, 10,

12 mm: aluminum

Seals: NBR (silicone free)

u-packing and O-rings

Release sleeve and backing ring:

POM

Grab-ring: stainless steel

Collar: ZNDC

Options selector

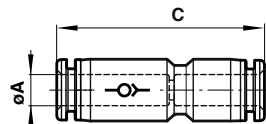
C★0GL★00

Tube	Substitute
Inch	2
Metric	0

O/D tube size (inch)	Substitute
5/32	02
1/4	04
5/16	05
3/8	06
1/2	07

O/D tube size (mm)	Substitute
4	04
6	06
8	08
10	10
12	12

In-line non-return valve

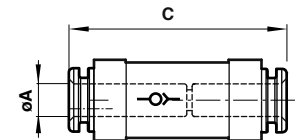
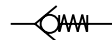


Ø A (inch)	C (inch)	Weight (g)	Model
5/32	1.67	5	C20GL0200
1/4	1.91	10	C20GL0400
5/16	2.19	14	C20GL0500



Ø A (mm)	C (mm)	Weight (g)	Model
4	42	5	C00GL0400
6	47.5	10	C00GL0600
8	55.5	14	C00GL0800

In-line non-return valve



Ø A (inch)	C (inch)	Weight (g)	Model
3/8	2.56	43	C20GL0600
1/2	2.84	61	C20GL0700



Ø A (mm)	C (mm)	Weight (g)	Model
10	65	43	C00GL1000
12	73	61	C00GL1200