

3/2 Electrically Actuated Valves

DM/1500**DM/1502****Port sizes: 1/2" B.S.P.****Operating temperature: -20°C* to +50°C**

* Important: Refer to leaflet F1

Operating pressure: 0-10 bar**Cv factor: 0.22**

The DM/1500 Electrojet has been specially developed to give a very high performance (e.g. 600 cycles per minute) in a very compact unit. In particular this valve has a very high flow capacity making it suitable for operating large valves. It can also be used to directly control cylinders having a bore of up to 4 in. Where a high rate of flow is required this valve should be considered in preference to the S/557.

The DM/1500 works on the same principle as other Martonair solenoid valves - energisation of the coil causes the armature to move, thus sealing one port and opening another, with a spring return - but not only is it available as a 'normally closed' or 'normally open', type DM/1502 valve, it can also be used as a pressure selector valve or a 2-port valve.

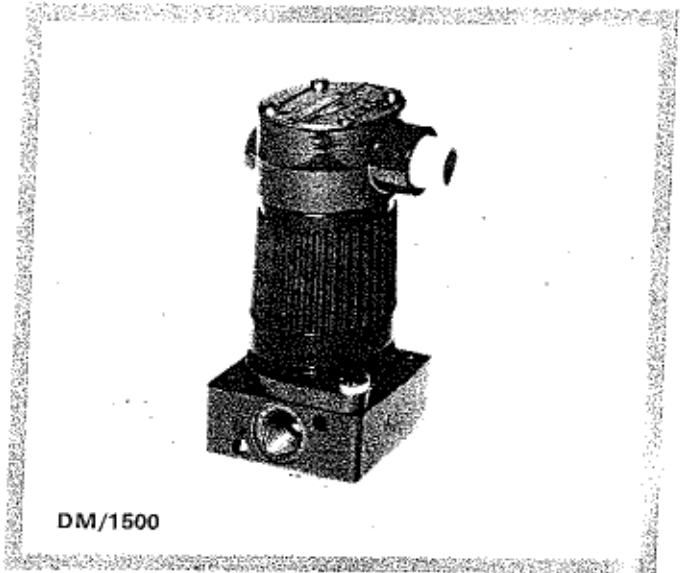
When used as a pressure selector valve two supply lines of different pressures are connected to the valve and by operating it pressure to equipment further down the line can be varied.

When used as a 2-port valve, one port is plugged thus giving an 'on-off' action. This can also be of the 'normally closed' type (energisation of the coil allows air to pass through the valve) or the 'normally open' type (operation shuts off supply).

As there is only one moving part, wear is reduced to a minimum and little maintenance is required.

These valves can also be supplied fitted with a manual over-ride device, which enables them to be operated in the event of a power failure.

The terminal box itself has Pg9 conduit connection and can be rotated through 360°.

**DM/1500**

Type	Description
DM/1500A	Electrojet. High flow electrically operated valve, normally closed.
DM/1502	Electrojet. High flow electrically operated normally open.

The DM/1500 can also be used with water, other liquids and gases. For these applications Martonair Technical Sales *MUST* be consulted.

All ferrous parts are plated or manufactured in stainless steel for corrosion resistance, and the material specifications selected to give the special magnetic properties required.

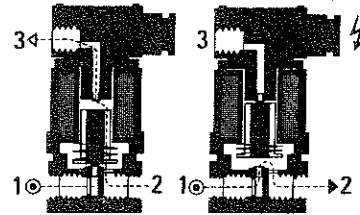
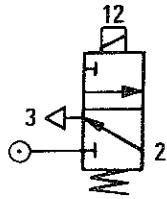
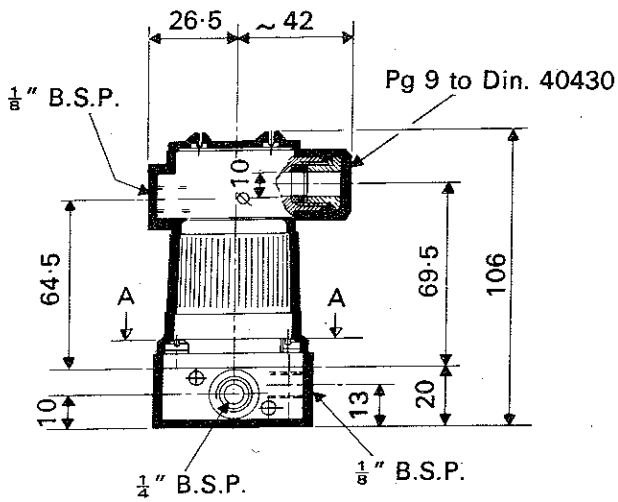
Another design feature of these valves is that several can be mounted on a manifold which enables them to be grouped together to form a single, composite unit, having one 1/2 in. B.S.P. inlet. These units can be either 'normally open' or 'normally closed', but the two types cannot be mixed.

Manifold bases are connected together with two tie-rods and are sealed with 'O' rings. The bases are also available separately and come complete with 'O' rings, screws and washers. Any of the valves can be provided with manual over-ride.

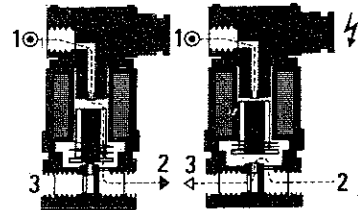
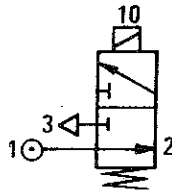
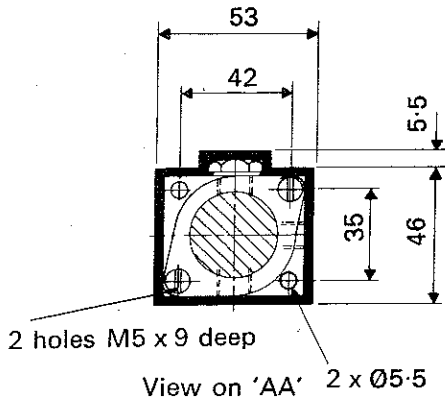
Base—part no. M/P95665

Tie rod set—part no. DQM/1500/Y/21
(no. of units.)

The DM/1500 has an extremely fast opening time, being about 10 to 12 milliseconds.



DM/1500A
Electrically actuated
sub-base mounted valve
Normally closed



DM/1502
Electrically actuated
sub-base mounted valve
Normally open.

Electrical characteristics
Voltage and frequency

10v 50Hz	24v 60Hz
12v 50Hz	115v 60Hz
24v 50Hz	220v 60Hz
36v 50Hz	
42v 50Hz	6v D.C.
48v 50Hz	13v D.C.
110v 50Hz	24v D.C.
125v 50Hz	48v D.C.
220v 50Hz	60v D.C.
380v 50Hz	110v D.C.