

2/2-way valves ND 8 to 12



For neutral gaseous and liquid fluids
Indirectly solenoid actuated
Diaphragm valves
Internal threads G ¼ to G ½
Operating pressure 0.7 to 16 bar



Publication 7500960.06.08.96
Catalogue index
AK 6
09270 series

Description (standard valve)

Solenoid valve for air, water and oil

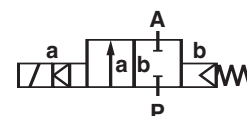
Flow direction: determined
Fluid temperature: max. +80 °C
Ambient temperature: max. +55 °C
Sum of fluid and ambient temperature: max. +100 °C
Mounting position: optional
Material Body: Brass
Seat seal: NBR

For contaminated fluids insertion of a strainer is recommended (see accessories).



Features

- Damped operation
- Short end-to-end length
- Easily interchangeable solenoid



Switching function:
Normally closed

Characteristic data

ND [mm]	Connection (Thread acc. to DIN 228/1)	min. ¹⁾	Operating pressure [bar]			kv-value ²⁾ (Base m ³ /h)	Weight [kg]	Dimension table No.	Cat no.	
			gaseous	liquid up to 1 mm ² /s (cSt)	liquid up to 25 mm ² /s (cSt)				Valve	Solenoid DC or AC
8	G ¼	0.7	16	16	10	1.6	0.65	01	0927000. 0201	
10	G ⅜	0.7	16	16	10	1.9	0.65	02	0927100. 0201	
12	G ½	0.7	16	16	10	2.0	0.65	03	0927200. 0201	

¹⁾ Minimum pressure differential P→A 0.7 bar

²⁾ Cv-value (US) ≈ kv-value x 1.2

State voltage [V] and frequency [Hz]

IMI Norgren Buschjost GmbH + Co. KG

Postfach 10 02 52-53
D-32502 Bad Oeynhausen

Telefon (0 57 31) 7 91-0
Telefax (0 57 31) 79 11 79

<http://www.buschjost.de>
e-mail: mail@buschjost.de

Solenoids

Standard-voltages	☰	~
		50 Hz
	24 V	230 V

Design acc. to VDE 0580
 100 % duty cycle
 Voltage range $\pm 10\%$
 Protection class acc. to EN 60529 IP 65 (previous DIN 40 050)
 Socket acc. to DIN 43 650

For technical details see catalog-register "Solenoids"

Further models

available at extra cost

- XX XXX **01.0901** Seat seal material EPDM ²⁾
- XX XXX **02.XXXX** Seat seal material FPM ²⁾
- XX XXX **03.XXXX** Degreased version, Seat seal material FPM, valve body blue painted
- XX XXX **20.XXXX** Normally open
- **On request** Combinations and further versions

²⁾ Up to max. temperature +130 °C, only in combination with solenoid for higher temperatures.

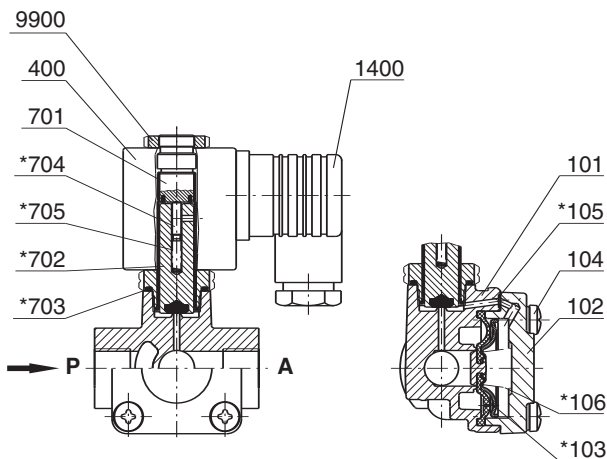
Power consumption ¹⁾

Magnet	bei ☰	bei ~ Inrush	Holding
0201	12 W	22 VA	15 VA

¹⁾ According to VDE 0580 at coil temperature +20 °C. In operating the solenoid coil decrease the power consumption appr. 30 %.

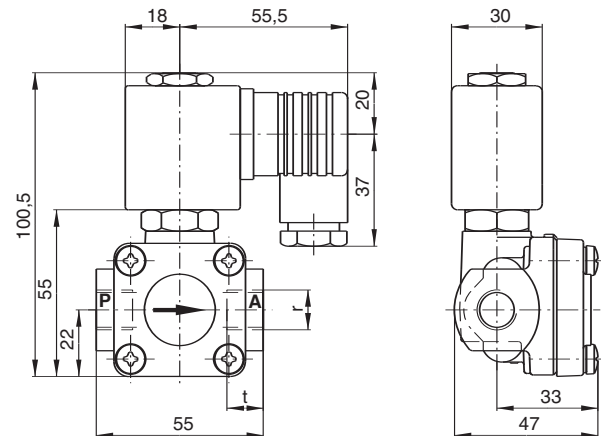
- XX XXX **10.0770** Solenoid in protection class (Ex)s G4, for DC
- XX XXX **10.0771** Solenoid in protection class (Ex)s G4, für AC
- XX XXX **24.0770** Solenoid in protection class (Ex)s G4, normally open, for DC
- XX XXX **24.0771** Solenoid in protection class (Ex)s G4, normally open, for AC
- XX XXX **XX.0901** Solenoid for higher temperatures up to max. +130 °C
- **On request** Further versions

Section



- | | |
|---------------------------|--|
| 101 Valve body | *705 Pressure spring |
| 102 Body cover | 1400 Socket |
| *103 Diaphragm | 9900 Hexagon nut |
| 104 Cheese head cap screw | |
| *105 O-ring | * These individual parts form a complete wearing unit. |
| *106 Pressure spring | When ordering spare parts please state cat.-no. and series-no. |
| 400 Solenoid | |
| 701 Core tube | |
| *702 Core | |
| *703 O-ring | |
| *704 Guide pin | |

Dimensions



Solenoid may be rotated 360°

Socket turnable 4 x 90°

Dimension table no.	r	t
01	G 1/4	12
02	G 3/8	12
03	G 1/2	14