

2/2-way valves ND 8 to 12



For neutral gaseous and liquid fluids
Indirectly solenoid actuated
Diaphragm valves
Internal threads G ¼ to G ½
Operating pressure 0.5 to 10 bar



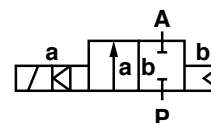
Publication 7501539.06.10.97
Catalogue index
A 6, H 18
82 020, 82 030 series

Description (standard valve)

Solenoid valve for air, water and oil

Flow direction: determined
Fluid temperature: max. +80 °C
Ambient temperature: max. +55 °C
Sum of fluid and ambient temperature: max. +100 °C
Mounting position: optional, preferably solenoid vertical on top
Material Body: Brass
Seat seal: NBR
Internal parts: 1.4104, 1.4301

For contaminated fluids insertion of a strainer is recommended (see accessories).



Switching function:
Normally closed

Features

- High flow rate
- Clear design
- Single part diaphragm
- Easily interchangeable solenoid

Characteristic data

ND	Connection (Thread acc. to DIN 228/1)	Dimension [mm]	Operating pressure with gaseous and liquid fluids up to 25 mm ² /s (cSt) [bar]		k _V -value ²⁾ (Base m ³ /h)	Weight [kg]	Dimension table no	Cat no	
			min. ¹⁾	max.				Valve	Solenoid DC or AC
8	G ¼	67	0.5	10	1.7	0.635	01	82 020 00.0201	
8	G ¼	55	0.5	10	1.6	0.640	02	82 030 00.0201	
10	G ⅜	67	0.5	10	3.4	0.610	03	82 021 00.0201	
10	G ⅜	55	0.5	10	2.5	0.635	04	82 031 00.0201	
12	G ½	67	0.5	10	4.0	0.580	05	82 022 00.0201	
12	G ½	55	0.5	10	3.6	0.605	06	82 032 00.0201	

State voltage [V] and
frequency [Hz]

¹⁾ Minimum pressure differential P₁ A 0.5 bar

²⁾ C_V-value (US) ≈ k_V-value x 1.2

IMI Norgren Buschjost GmbH + Co. KG

PO Box 10 02 52-53
D-32502 Bad Oeynhausen

Tel +49 (0) 57 31 79 10
Fax +49 (0) 57 31 79 11 79

<http://www.buschjost.com>
e-mail: mail@buschjost.de

Solenoids

Standard-voltages	DC	AC	
		50 Hz	60 Hz
	24 V	24 V	–
	–	110 V	120 V
	205 V	230 V	220 V

Design acc. to VDE 0580
 100 % duty cycle
 Voltage range $\pm 10\%$
 Protection class acc. to EN 60529 IP 65 (previous DIN 40 050)
 Socket acc. to DIN 43 650

Attention! Restricted temperature range for explosion proof solenoids.
 For technical details see catalog-register "Solenoids"

Further models

available at extra cost

- XX XXX **01.XXXX** Normally open
- XX XXX **03.XXXX** Seat seal FPM
- XX XXX **04.XXXX** Damped operation, k_V -value reduced appr. -40%

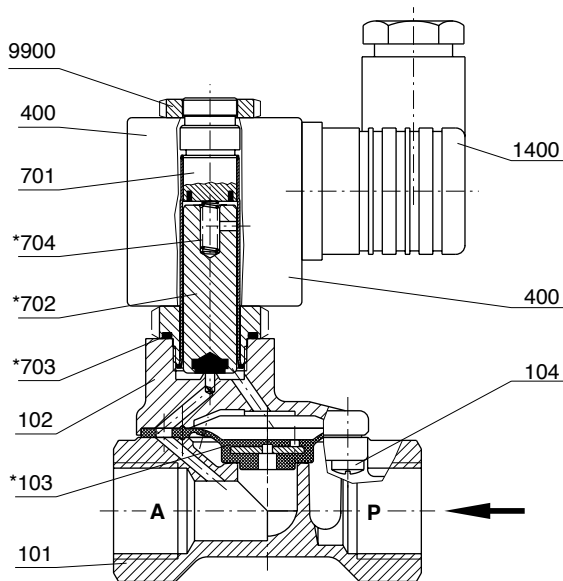
Power consumption ¹⁾

Solenoid	DC	AC	
		Inrush	Holding
0201	12 W	22 VA	15 VA

¹⁾ According to VDE 0580 at coil temperature $+20\text{ }^\circ\text{C}$. In operating the solenoid coil decrease the power consumption appr. 30% .

- XX XXX **07.XXXX** Fabric diaphragm, for air only
- XX XXX **14.XXXX** Seat seal EPDM
- XX XXX **XX.9341** Solenoid in protection class Ex me II T3 for $\text{---} / \sim$

Section drawing

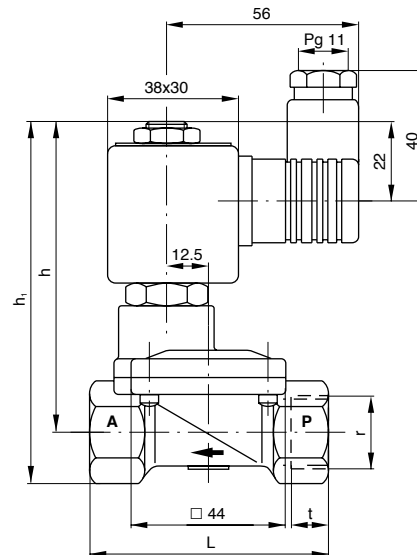


- 101 Valve body
- 102 Body cover
- *103 Diaphragm
- 104 Oval head cap screw
- 400 Solenoid
- 701 Core tube
- *702 Core
- *703 O-ring
- *704 Pressure spring
- 1400 Socket
- 9900 Hexagon nut

* These individual parts form a complete wearing unit.

When ordering spare parts please state cat -no and series-no.

Dimensions drawing



Solenoid may be rotated 360°
 Socket turnable 4 x 90°

Dimension table no	h	h ₁	l
01	90	105	67
02	92	107	55
03	90	105	67
04	92	107	55
05	90	105	67
06	92	107	55

Dimension table no	r	t
01	G 1/4	12
02	G 1/4	10
03	G 3/8	12
04	G 3/8	10
05	G 1/2	14
06	G 1/2	10