

2/2 energise to open (normally closed)

Certification T6 (Tamb = -55°C to +50°C (-67°F to + 122°F)) & T4 (Max ambient +90°C (+194°F)) or equipment must be used within 'T' class temp ranges shown.

EX II 2 GD - gas and dust environments.

Exd protection, gas group IIC.

Atex certification SIRA 05ATEX1156, complies with ATEX directive 94/9/EC

IECEX certification IECEX SIR 05.0029

Safety integrity level SIL 3 or SIL 4 (SIL 4 in a redundant configuration only)

Protection IP66/X8, NEMA 4X



Technical features

Max. inlet pressure: 0-12 bar (0-174 psi)

Flow rates: $C_v = 0.6$ USgpm for 1 psi Δp

$K_v = 8.7$ l/min for 1 bar (15 psi) Δp

Port size: 1/4"

Process connections: NPT

Conduit / Signal Conns:

M20 x 1.5mm ISO (F)

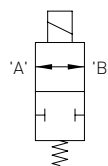
Media: Customer to specify and confirm compatibility

Weight: 2 kg

Electrical information

Voltage (nominal)	24V DC	Pull-in Voltage	$\geq 87.5\%$ of nominal
Response Times (Typ)	Pull-in < 80 MS Drop Out < 60 MS	Drop-Out Voltage	10 - 20% of nominal
Voltage Protection	Surge suppression diodes fitted as STD	Coil Encapsulation	Class H
Leak Performance	Bubble tight at -50 °C. <30cc/m at -55 °C.	Coil Duty Cycle	100%

ICO3S 1/4" 2/2 12 BAR (174 PSI) AUTO



Temperature ratings:

Media (min/max): -55°C/90°C
(-67°F/194°F)

Ambient: must be used within 'T'
class temperature ranges shown

Coil Rating: 190 ohms

Power Consumption: 3 watts

Operation: Automatic

Materials: Valve body & trim -

316L stainless steel

O-Rings seats & seals - nitrile

Paint finish - 316LSS coil housing

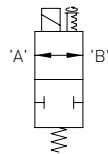
- unpainted

Ordering information:

Quote: Y011AA1H1BS

Options: None

ICO3S 1/4" 2/2 12 BAR (174 PSI) JSMO



Temperature ratings:

Media (min/max): -10°C/90°C
(+14°F/194°F)

Ambient: must be used within 'T'
class temperature ranges shown

Coil Rating: 190 ohms

Power Consumption:

3 watts

Operation:

Jack screw manual override

Materials:

Valve body & trim - 316L stainless
steel

O-Rings seats & seals - FKM

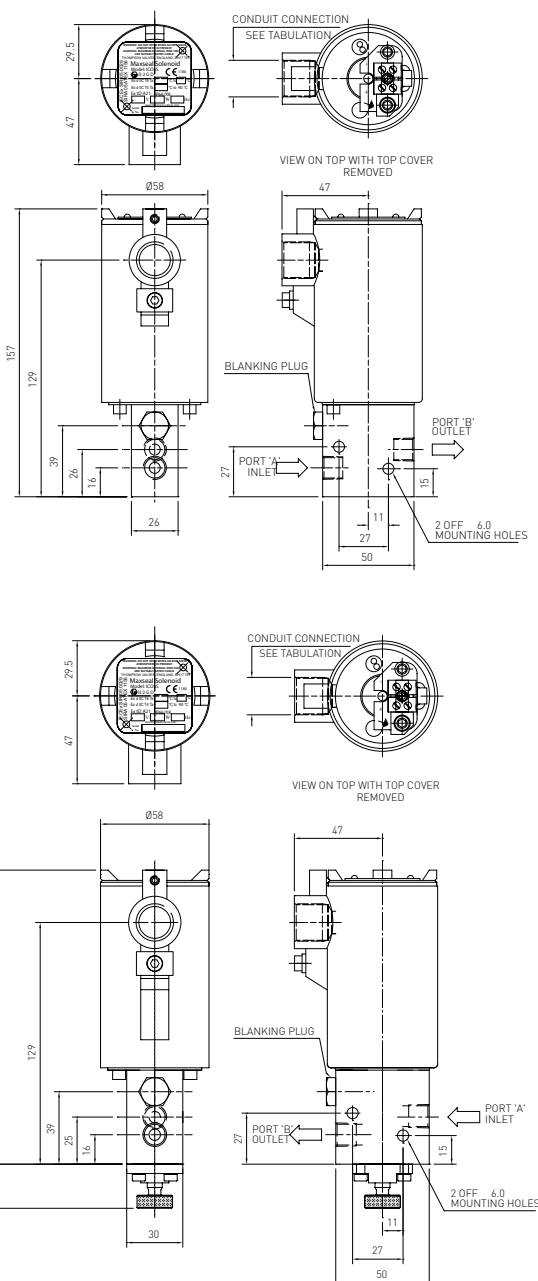
Paint finish - 316LSS coil housing

- unpainted

Ordering information:

Quote: Y011SA1V1BS

Options: None



Profile and dimensions mm