

- > **Port size:**
1/8 ... 1/2" (ISO G)
- > **Predefined options**
provide ease of
ordering
- > **Flexible configurations**



Technical features

Medium:

Compressed air

Maximum inlet pressure:

10 bar (145 psi)

Flow:

116,7 l/s max., at port size 1/2",
10 bar inlet pressure, pressure set
at 6,3 bar and 1 bar pressure drop
from set.

Port size:

G1/8, G1/4, G3/8, G1/2

Bowl capacity:

G1/8 & G1/4: 20 ml

G3/8 & G1/2: 85 ml

Start point *1):

1/8" & 1/4": 0,25 l/s

3/8", 1/2": 0,5 l/s

*1) Minimum flow rate for lubricator
operation at 5 bar

Drain type:

Closed bottom

Ambient/Media temperature:

0 ... +60°C (+32 ... +140°F)

Air supply must be dry enough to
avoid ice formation at temperatures
below +2°C (+35°F).

Materials:

1/8" & 1/4" Body:

Polyamide

3/8" & 1/2" Body:


Die casting Aluminum

Bowl: Transparent PC

Bowl cover: Polyamide



Elastomers: Nitrile

Technical data - standard models

Symbol	Port size	Flow rate (l/s)	Weight (kg)	Bowl	Model without gauge
	G1/8	10	0,105	Transparent without guard	L49C-1GP-ETN
	G1/4	15	0,103	Transparent without guard	L49C-2GP-ETN
	G3/8	25	0,319	Transparent with guard	L49C-3GP-EWN
	G1/2	50	0,309	Transparent with guard	L49C-4GP-EWN

Option selector

L49C-★ ★ P-★ ★ ★

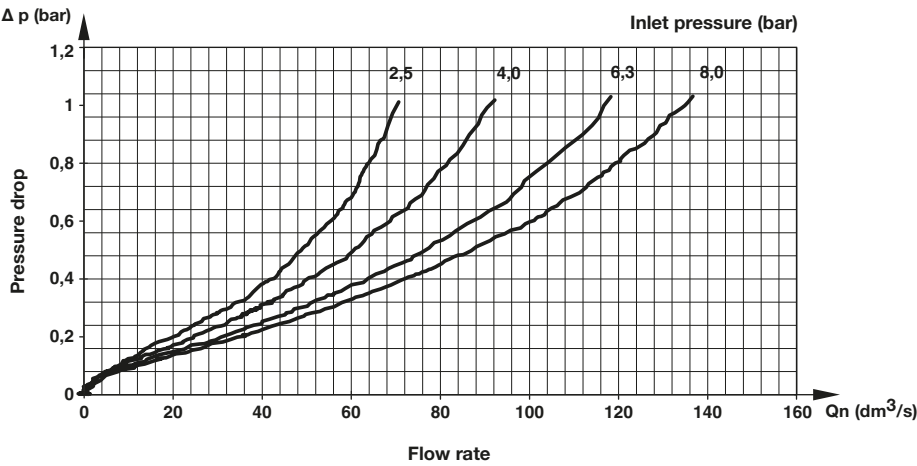
Port size	Substitute		Option	Substitute
1/8"	1		None	N
1/4"	2		Bowl	Substitute
3/8"	3		Transparent without guard *1)	T
1/2"	4		Transparent with guard *2)	W
Thread form	Substitute		Drain	Substitute
ISO G	G		Closed bottom	E

*1) For G1/8 & G1/4 only



*2) For G3/8 & G1/2 only

Flow characteristics

Port size 1/2"



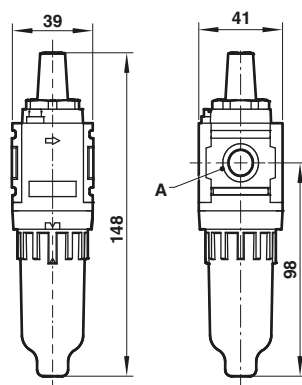
Accessories

C Bracket		Lubricator bowl
		
Port size	Page 4	
G1/8 & G1/4	49B-021	49B-LB1
G3/8 & G1/2	49B-022	49B-LB2

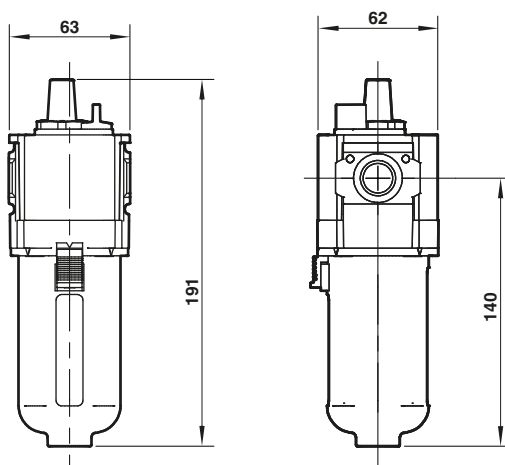
Dimensions

G1/8 & G1/4

Dimensions in mm
Projection/Third angle



G3/8 & G1/2

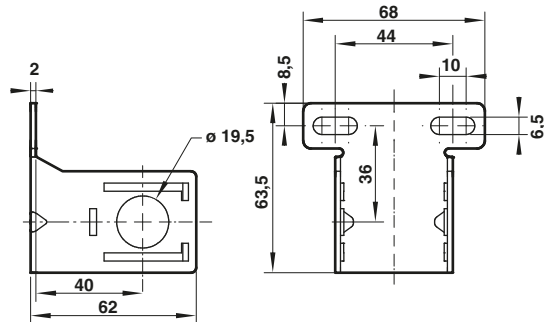


Port size (A)	Model
G1/8	L49C-1GP-ETN
G1/4	L49C-2GP-ETN
G3/8	L49C-3GP-EWN
G1/2	L49C-4GP-EWN

Accessories

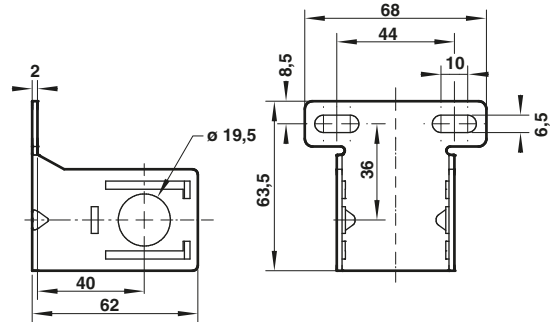
C Bracket

49B-021



C Bracket

49B-022



Dimensions in mm
Projection/Third angle



Warning

These products are intended for use in industrial compressed air systems only. Do not use these products where pressures and temperatures can exceed those listed under »**Technical features/data**«.

Before using these products with fluids other than those specified, for non-industrial applications, life-support systems or other applications not within published specifications, consult IMI Precision Engineering, Norgren Co. Ltd.

Through misuse, age, or malfunction, components used in fluid power systems can fail in various modes. The system designer is warned to consider the failure modes of all component parts used in fluid power systems and to provide adequate safeguards to prevent personal injury or damage to equipment in the event of such failure.

System designers must provide a warning to end users in the system instructional manual if protection against a failure mode cannot be adequately provided.

System designers and end users are cautioned to review specific warnings found in instruction sheets packed and shipped with these products.