


## IMI Norgren Excelon® Plus

**Air Preparation Range**  
**1/4", 3/8" 82 Series**  
**3/8", 1/2", 3/4" 84 Series**  
**Installation and Maintenance Instructions**






DE – Für weiterführende Informationen diesen QR-Code scannen oder siehe:  
ES – Para más información y otros idiomas, escanear este código QR o visitar:  
FR – Pour plus d'informations et d'autres langues, consultez ce code QR ou visitez:  
IT – Per ulteriori informazioni e altre lingue scansionare questo QR code o visitare:  
PT – Para mais informação e outros idiomas scaneie este código QR ou visite a:  
RU – Для получения более подробной информации, в том числе на других языках, пожалуйста, отсканируйте QR код или посетите :  
[www.norgren.com/excelon-plus](http://www.norgren.com/excelon-plus)

**Excelon® Plus TR series:**  
Part numbers preceded by the letter **L** are validated for Rail Applications.  
Part numbers preceded by the letter **H** have a broader application temperature range for industrial application

L variants (Rail Approved)                    -40° to +80 °(-40F ° to 176F °)  
H variants (Extreme Temp.)                -40° to +80 °(-40F ° to 176F °)  
unless otherwise stated on the product label.

For Technical Data see the data sheets on [www.norgren.com](http://www.norgren.com)



II 2 GD

Ex h IIC T6 Gb

Ex h IIIC T85°C Db

\* See overleaf for ATEX declaration of conformity. ATEX does not apply to B84, R84 and Q84 units with Integrated Electronic Pressure Switches.

### CAUTION

Water vapour will pass through these units and could condense into a liquid form downstream as air temperature drops. Install an air dryer if water condensation could have a detrimental effect on the application.

Installation, commissioning, disassembling as well as repair and maintenance must only be carried out by qualified specialized personnel with expertise and experience on pneumatic technology and in case of electrical devices also electrical technology.

### WARNINGS

- These products are intended for use in industrial compressed air systems only. Do not use these products where pressures and temperatures can exceed those listed under Technical Data.
- Polycarbonate plastic bowls can be damaged and possibly burst if exposed to such substances as certain solvents, strong alkalis, compressor oils containing ester-based additives or synthetic oils. Fumes of these substances in contact with the polycarbonate bowl, externally or internally, can result in damage.
- Use metal bowl in applications where a plastic bowl might be exposed to substances that are incompatible with polycarbonate.
- An outlet pressure more than the pressure setting could cause downstream equipment to rupture or malfunction. Install a pressure relief device downstream of the filter-regulator/regulator. Do not modify or interfere with the adjusting mechanism.
- The relief pressure and flow capacity of the relief device must satisfy system requirements.
- The accuracy of the indication of pressure gauges can change both during shipment (despite care in packaging), and during the service life. Ensure the gauge readings are accurate if a pressure gauge is to be used with these products and if inaccurate indications may be hazardous to personnel or property.
- See separate product specific manual for Integrated Electronic Pressure Switch installation, operation and repair.
- Before using these products with fluids other than air, non-industrial applications or for life-support systems, consult Norgren.

### GENERAL INSTALLATION

- GI-1

Always turn off and exhaust air pressure prior to installing and servicing units. Ensure that the air is completely exhausted prior to beginning any actions.
- GI-2

Connect piping to ports using pipe thread sealant on male threads only. Do not allow sealant to enter the interior of the unit. Units should be installed with air flow in the direction of the arrow on the body and as close as possible to the device being serviced.
- GI-3

Install filters:

GI-3.1 Upstream of regulators, lubricators, and cycling valves and oriented vertically
- GI-4

Install regulators:

GI-4.1 Upstream of lubricators and cycling valves, and downstream of filters
- GI-5

Install filter/regulators:

Upstream of lubricators and cycling valves, downstream of filters, and oriented vertically
- GI-6

Install lubricators:

GI-6.1 Upstream of cycling valves and oriented vertically

GI-6.2 Install oil-fog lubricator no more than 15 feet (4.6m) from the devices being lubricated and at the same height or higher than the device being serviced
- GI-7

Special considerations for units with a/an:

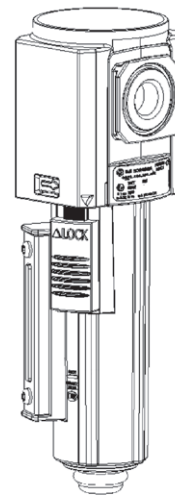
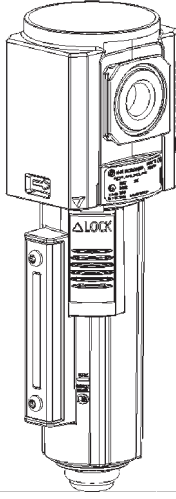
GI-7.1 Automatic drain:

Automatic drain flexible tube requires a minimum internal diameter of 5 mm (3/16"). Drain may fail to operate if the tube ID is less than 5 mm. Avoid restrictions in the tube.

GI-7.2 Gauge port:

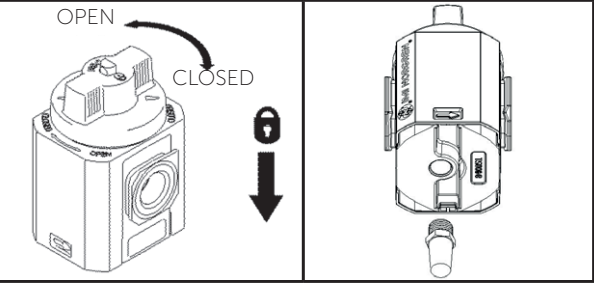
Install a pressure gauge or plug the gauge port if no gauge is present.

GI-7.3 Bowl:

Ensure the clip and cover arrows are aligned before pressurizing.
- 

Bowl in lock position (cover and bowl arrows aligned).  
To unlock, pull lock clip down, push bowl up, and turn bowl left moving the clip toward the body directional arrow.

Bowl in unlocked position (clip locking tab visible above LOCK). Bowl Bayonet tabs are in body. Turn bowl toward bowl alignment arrow on cover. Bowl will be in position when lock clip snaps into body.
- #### Shut-off Valve
- #### Tamper Proofing
- Shut-off Valve

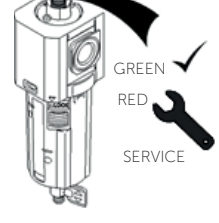
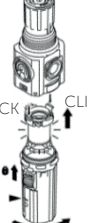
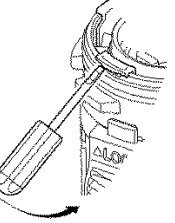


- | Accessories—84/82 Series |                      |
|--------------------------|----------------------|
| Part No.                 | Description          |
| 840055-01KIT             | Padlock kit          |
| 840055-02KIT             | Hasp lock-out device |
- SO-1

To isolate the supply pressure and exhaust the downstream pressure, rotate the knob from the open to the closed position.

SO-2

To lock the valve in the closed position, push the knob down and apply a hasp or padlock.

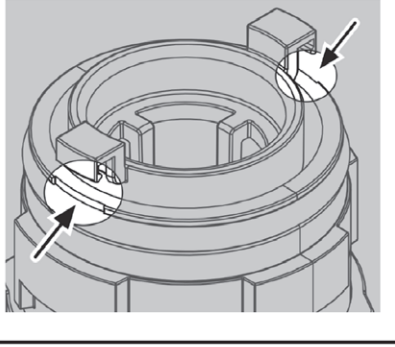
SO-3

To reduce noise and keep contamination out of the unit, installing an exhaust muffler into the bottom port is recommended.
- ## Filter & Filter/Regulator
- #### Install filters:
- Upstream of regulators, lubricators, and cycling valves and oriented vertically
- #### SERVICING
- Service kits for each series are listed in table 1 below.  
See illustrations below. Note, any replacement O-ring seals should be lubricated.  
See Norgren website for recommended lubricants. Use QR code or web link.
- #### Servicing—F ilter replacement
- 

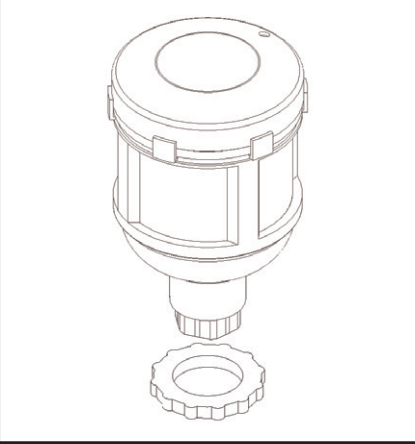
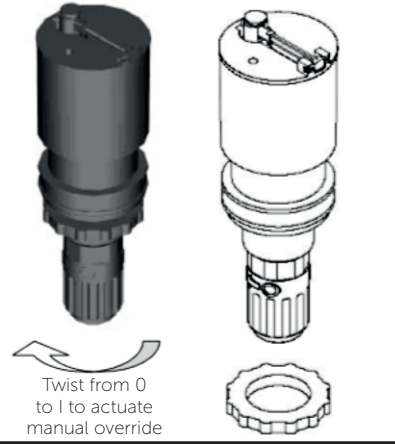
Remove bowl per GI-7.3

Unclip and remove element cartridge from bowl

Snap new filter into bowl and install bowl per GI-7.3

Coalescing elements must be replaced when indicator is fully red under flow conditions
- 

The 82 Series filter installation requires that the filter tabs align with the recessed area in the top o-ring retention diameter.


- Operating Manual Drain or Automatic Drain Override**  
Rotate the manual drain 1/4 turn to expel accumulated liquids.  
Keep liquids below the baffle (max level identified on bowl).  
If needed, rotate the manual override section of the automatic drain per drain override arrow to expel liquids.
- #### Serving-Automatic Drain Replacement
- F-1

Remove bowl per GI-7.3

F-2

Remove filter element.

F-3

Remove the retaining nut, auto-drain assembly, and gasket.

F-4

Replace the auto-drain assembly with the correct service kit, ensuring that the gasket is located between the auto-drain assembly and bowl.

F-5

Hand thread and torque the retaining nut to 20.0-25.0 in-lb (2.26-2.82 Nm).

F-6

Replace element and install bowl per GI-7.3
- | Spare Parts: Filter Bowls                   |              |                        |                         |              |                        |                         |
|---|--------------|------------------------|-------------------------|--------------|------------------------|-------------------------|
| Description                                 | 82 Series    | 82 Series Extreme Temp | 82 Series Rail Approved | 84 Series    | 84 Series Extreme Temp | 84 Series Rail Approved |
| Metal bowl S/Glass with manual drain        | 820003-50KIT | H820003-50KIT          | L820003-50KIT           | 840003-50KIT | H840003-50KIT          | L840003-50KIT           |
| Metal bowl S/Glass with auto drain 6mm PIF  | 820003-51KIT | H820003-51KIT          | L820003-51KIT           | 840003-51KIT | H840003-51KIT          | L840003-51KIT           |
| Metal bowl with closed drain                | 820003-55KIT | H820003-55KIT          | L820003-55KIT           | 840003-55KIT | H840003-55KIT          | L840003-55KIT           |
| Metal bowl S/Glass with auto drain 1/4" PIF | 820003-56KIT | H820003-56KIT          | L820003-56KIT           | 840003-56KIT | H840003-56KIT          | L840003-56KIT           |
| Metal bowl with manual drain                | NA           | H820003-XXKIT          | L820003-XXKIT           | NA           | H840003-XXKIT          | L840003-XXKIT           |
| Guarded Poly bowl with manual drain         | 820025-50KIT | NA                     | NA                      | 840025-50KIT | NA                     | NA                      |
| Guarded Poly bowl with auto drain 6mm PIF   | 820025-51KIT | NA                     | NA                      | 840025-51KIT | NA                     | NA                      |
| Guarded Poly bowl with auto drain 1/4" PIF  | 820025-53KIT | NA                     | NA                      | 840025-53KIT | NA                     | NA                      |
- For replacement bowls required for part numbers preceded by a H or L please contact the factory
- | Replacement Elements for Filters & Filter Regulators |              |                        |                         |              |                        |                         |
|--|--------------|------------------------|-------------------------|--------------|------------------------|-------------------------|
| Description  | 82 Series    | 82 Series Extreme Temp | 82 Series Rail Approved | 84 Series    | 84 Series Extreme Temp | 84 Series Rail Approved |
| 5µm particulate element                              | 820038-50KIT | H820038-50KIT          | L820038-50KIT           | 840038-50KIT | H840038-50KIT          | L840038-50KIT           |
| 40µm particulate element                             | 820038-51KIT | H820038-51KIT          | L820038-51KIT           | 840038-51KIT | H840038-51KIT          | L840038-51KIT           |
| Coalescing cartridge element                         | 820044-50KIT | H820044-50KIT          | L820044-50KIT           | 840044-50KIT | H840044-50KIT          | L840044-50KIT           |
| Vapour removal cartridge element                     | 820041-50KIT | H820041-50KIT          | L820041-50KIT           | 840041-50KIT | H840041-50KIT          | L840041-50KIT           |
- | Replacement Drains for Filters & Filter Regulators |           |                        |                         |           |                        |                         |
|--|-----------|------------------------|-------------------------|-----------|------------------------|-------------------------|
| Description  | 82 Series | 82 Series Extreme Temp | 82 Series Rail Approved | 84 Series | 84 Series Extreme Temp | 84 Series Rail Approved |
| Standard Automatic Drain 6mm PIF                   | 6000-60   | 6000-60                | 6000-60                 | 3000-40   | 3000-40                | NA                      |
| Standard Automatic Drain 1/4" PIF                  | 6000-61   | 6000-61                | 6000-61                 | 3000-40   | 3000-40                | NA                      |
| Manual Drain                                       | 619-50    | 684-85                 | 684-85                  | 684-85    | 684-85                 | LFRLB84NR-KIT           |
- Shock & Vibration tested to EN61373, Cat. I A&B and Cat. II
- ## Regulator & Filter/Regulator
- #### Install regulators:
- Upstream of lubricators, cycling valves and downstream of filters
- #### ADJUSTMENT (Regulator and filter-regulator)
- R-1

Before applying inlet pressure, pull the adjusting knob up (exposing the red indicator ring) and turn the adjusting knob in the minus direction to remove all force on the regulating spring.

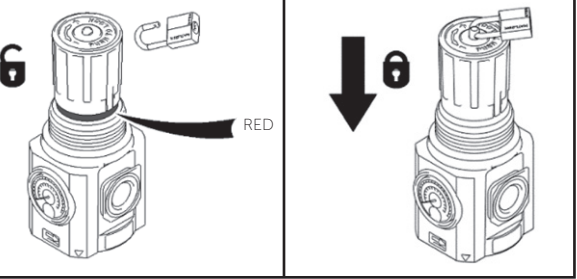
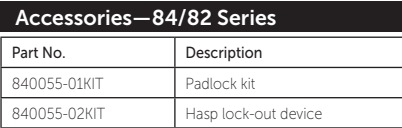
R-2

Apply inlet pressure, then turn the adjusting knob the direction indicated on the knob to adjust the pressure setting.

R-3

Always approach the desired pressure from a lower pressure. When reducing from a higher to a lower setting, first reduce to some pressure less than that desired, then bring up to the desired pressure.

R-4

Once the required pressure is achieved, push the knob down (red indicator ring covered) to lock pressure and apply a padlock if required. For T-bar adjustment, tighten lock-nut to lock pressure setting.
- #### Tamper proofing
- 
- #### SERVICING
- See illustrations below. Use QR code or web link.
- #### Servicing—Regulator
- R-5.1

Unscrew bottom plug using socket as shown and remove spring and valve

R-5.2

Replace all damaged seal components with the corresponding component from the elastomer kit.

R-5.3

Valve body is separated from valve stem by pushing the valve body end against a hard surface to pop the stem lose and then pull the stem out of body. Push the stem into new valve body until it snaps into place.

R-5.4

Lubricate valve stem o-ring, valve body o-ring, bottom plug o-ring, and the bottom plug valve bore with a light coat of good quality o-ring grease.

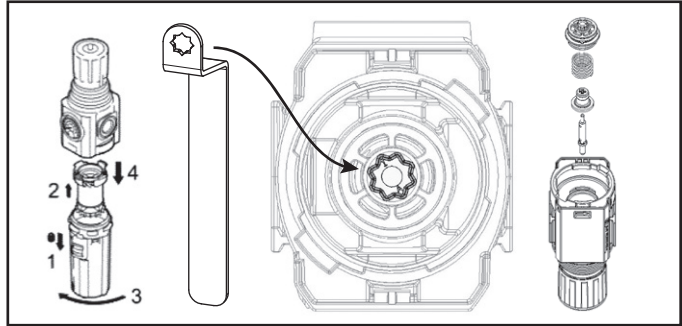
R-5.5

Reassemble the unit

R-5.6

Torque the bottom plug to:

25-35 IN-LB (2.82-3.95 Nm) for 82 Series (13 mm socket)

20-30 IN-LB (2.26-3.39 Nm) for 84 Series (25 mm socket)
- | Service Kits                       |              |                        |                         |              |                        |                         |
|------------------------------------|--------------|------------------------|-------------------------|--------------|------------------------|-------------------------|
| Description                        | 82 Series    | 82 Series Extreme Temp | 82 Series Rail Approved | 84 Series    | 84 Series Extreme Temp | 84 Series Rail Approved |
| Transparent - Relieving            | FRLB82-KIT   | NA                     | NA                      | FRLB84-KIT   | NA                     | NA                      |
| Metal Bowl S/ Glass - Relieving    | FRLB82-KIT   | HFRLB82-KIT            | LFRLB82-KIT             | FRLB84-KIT   | HFRLB84-KIT            | LFRLB84-KIT             |
| Transparent - Non-Relieving        | FRLB82NR-KIT | NA                     | NA                      | FRLB84NR-KIT | NA                     | NA                      |
| Metal Bowl S/Glass - Non-Relieving | FRLB82NR-KIT | HFRLB82NR-KIT          | LFRLB82NR-KIT           | FRLB84NR-KIT | HFRLB84NR-KIT          | LFRLB84NR-KIT           |
- Note: Service Kits contain soft seals only , for replacement elements see separate table  
\*\*Excludes all Lubricators(L), all Shut-off Valves (T), 17bar spring not currently offered for B&R units  
\*\*HL84 =,-34°C to +65 and the HT84°C = ,-20°C to +80°C  
All Variants preceded by 'H' have a broader operating temperature range than the standard series
- #### Servicing—Filter-regulator
- 
- R-6.1

Remove bowl per GI-7.3, unscrew valve retainer using spanner from FRLB kit, and remove spring & valve

R-6.2

Replace all damaged seal components with the corresponding component from the elastomer kit.

R-6.3

Valve body is separated from valve stem by pushing the valve body end against a hard surface to pop the stem lose and then pull the stem out of body. Push the stem into new valve body until it snaps into place.

R-6.4

Lubricate valve stem o-ring, valve body o-ring, bottom plug o-ring, and the valve retainer bore with a light coat of good quality o-ring grease.

R-6.5

Reassemble the unit

R-6.6

Reference valve retainer torque:

18-22 IN-LB (2.03-2.49 Nm) for 82 Series

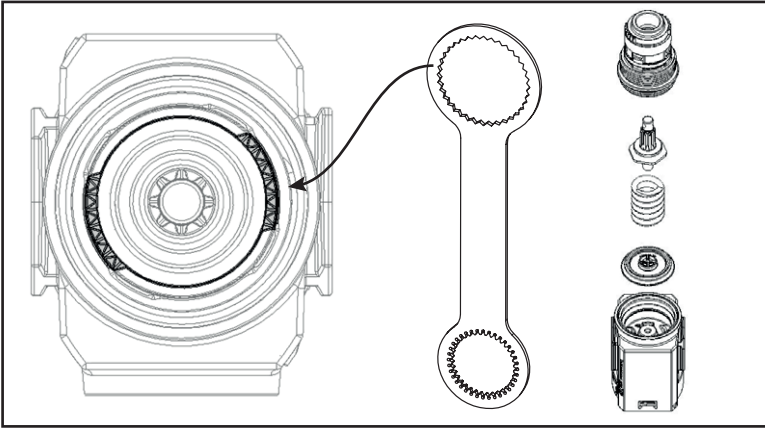
20-30 IN-LB (2.26-3.39 Nm) for 84 Series

R-6.7

Reinstall the bowl per GI-7.3
- 13911-C01, Rev. C

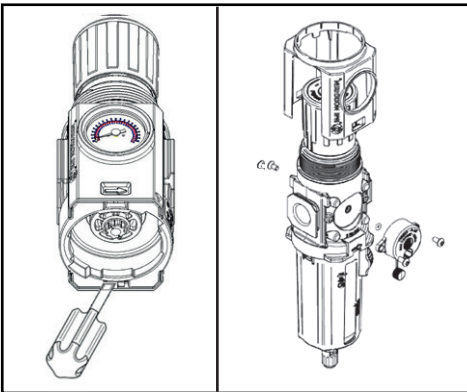


Changing Diaphragm–Filter/regulator and Regulator



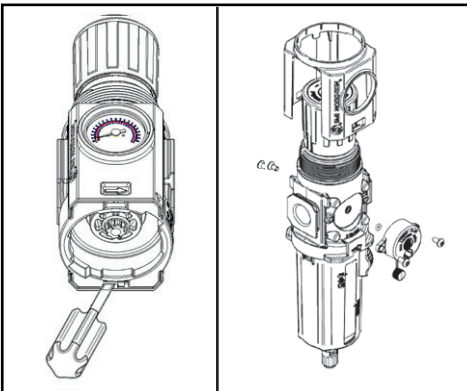
- R-71 Pull off the knob  
R-72 Use the spanner from the FRLB kit to remove the bonnet  
R-73 Remove the diaphragm, adjusting screw, and spring  
R-74 Pull apart the diaphragm seal and spring rest  
R-75 Push the new seal completely onto the springrest, the springrest will fit into the ribs of the seal and the inside edge of the seal will be below the top of the springrest post  
R-76 Reference bonnet torque: 80-110 IN-LB (10.2-12.4 Nm) for 82 Series  
132-177 IN-LB (15-20 Nm) for 84 Series

Changing Gauge–Filter/regulator and Regulator



- R-8.1 Use a flat-blade screwdriver to push out both cover tabs and remove the cover.  
R-8.2 Remove the gauge screws and gauge.  
R-8.3 Install the corresponding replacement gauge.  
R-8.4 Torque the gauge screws to:  
3.0-6.0 IN-LB (0.34-0.68 Nm) for 82 Series  
7.0-16.0 IN-LB (0.8-1.8 Nm) for 84 Series  
R-8.5 Install cover ensuring tabs snap into place.

Moving Gauge Right to Left Flow–Filter/regulator and Regulator



- R-9.1 Use a flat-blade screwdriver to push out both cover tabs and remove the cover.  
R-9.2 Remove the plug from the back side of the unit.  
R-9.3  
R-9.4 Remove the gauge screws and gauge.  
R-9.5 Install the gauge on the side of unit that the plug was installed.  
Torque the gauge screws to:  
3.0-6.0 IN-LB (0.34-0.68 Nm) for 82 Series  
7.0-16.0 IN-LB (0.8-1.8 Nm) for 84 Series  
R-9.6 Install the plug on the side of unit that the gauge was originally installed.  
R-9.7 Install cover ensuring tabs snap into place.  
Torque the plug to:  
22.1-26.6 IN-LB (2.50-3.00 Nm)  
R-9.8 Install cover ensuring tabs snap into place.

Replacement Parts-Guages and Guage Adaptors						
Description	82 Series	82 Series Extreme Temp	82 Series Rail Approved	84 Series	84 Series Extreme Temp	84 Series Rail Approved
Integrated gauge (10 bar) kit	820073-01KIT	H820073-01KIT	L820073-01KIT	840073-01KIT	H840073-01KIT	L840073-01KIT
Integrated gauge (20 bar) kit	820073-02KIT	H820073-02KIT	L820073-02KIT	840073-02KIT	H840073-02KIT	L840073-02KIT
Integrated gauge (4 bar) kit	820073-03KIT	H820073-03KIT	L820073-03KIT	840073-03KIT	H840073-03KIT	L840073-03KIT
Gauge port kit 1/8" NPT	820143-01KIT	H820143-01KIT	L820143-01KIT	840100-01KIT	H840100-01KIT	L840100-01KIT
Gauge port kit Rc1/8	820143-02KIT	H820143-02KIT	L820143-02KIT	840100-02KIT	H840100-02KIT	L840100-02KIT

Attention: Using integrated gauge in connecting with L- and H-version, the temperaturerange of the units change to -20°C to +65°C

Lubricator

Lubricator–Oil level



Servicing-Bowl Replacement

- L-1 Remove and install bowl per GI-7.3.

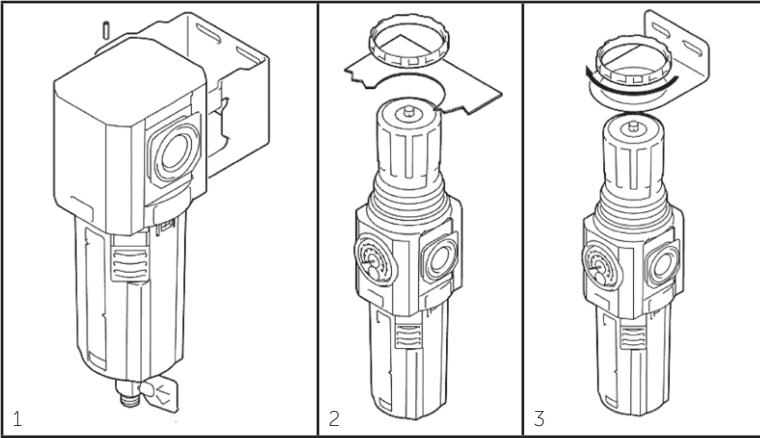
Servicing-Lubricator Sight Dome Replacement

- L-2.1 Remove the sight dome and sight dome seal  
L-2.2 Lubricate the new sight dome seal with a light coat of good quality o-ring grease  
L-2.3 Install the sight dome and torque to 20.0-25.0 IN-LB (2.26-2.82 Nm) with a 1" socket

Spare Parts: Lubricator Bowls						
Description	82 Series	82 Series Extreme Temp	82 Series Rail Approved	84 Series	84 Series Extreme Temp	84 Series Rail Approved
Metal bowl S/Glass with closed drain	820003-52KIT	H820003-52KIT	L820003-52KIT	840003-52KIT	H840003-52KIT	L840003-52KIT
Metal bowl with closed drain	820003-XXKIT	H820003-XXKIT	L820003-XXKIT	840003-55KIT	H840003-55KIT	L840003-55KIT
Guarded Poly bowl with closed drain	820025-52KIT	NA	NA	840025-52KIT	NA	NA

Single Unit Bracket

Mounting bracket options



Accessories: Brackets				
Part No.	82 Series	84 series	L Version (Rail Approved)	H Version (Extreme Temp.)
Mounting Bracket	820024-50KIT (1)	840024-50KIT (1)		840024-50KIT (1)
Panel Nut	820048-89KIT (2)	840048-89KIT (2)		840048-89KIT (2)
Neck mount bracket and panel nut	820068-51KIT (3)	840068-51KIT (3)		840068-51KIT (3)

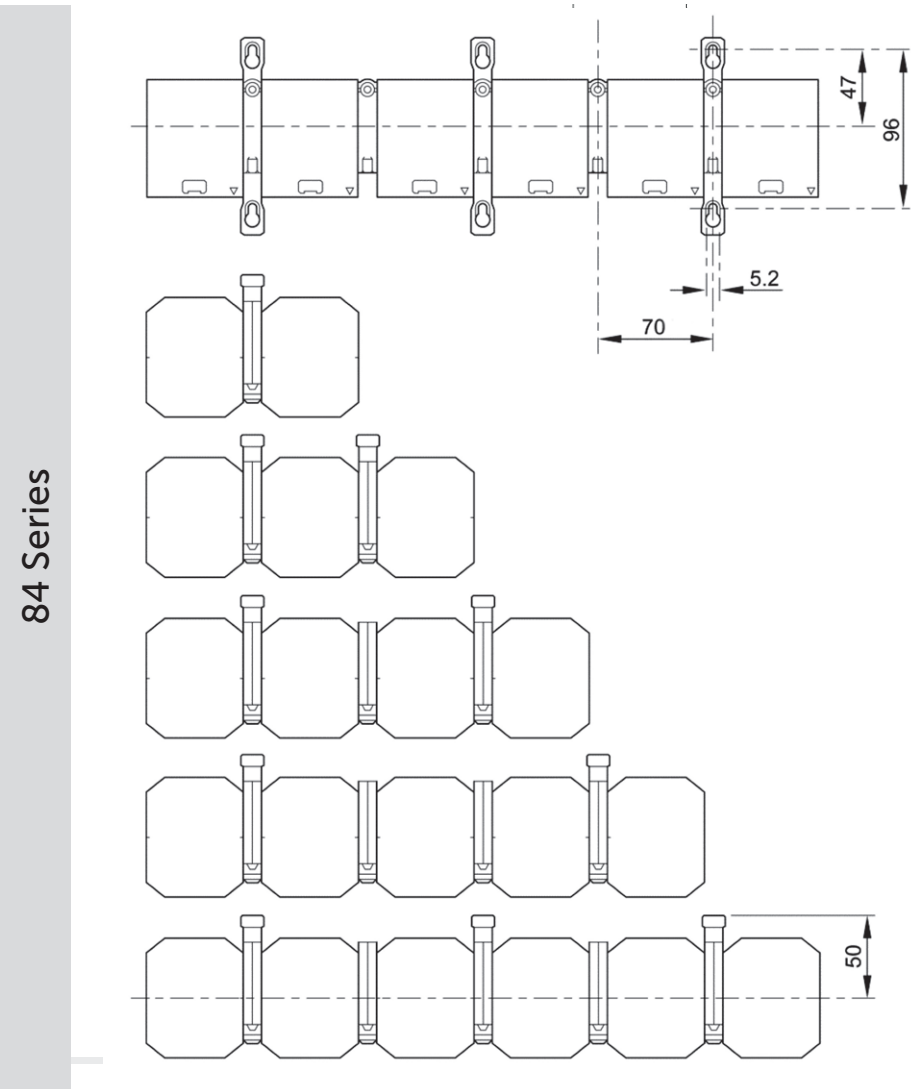
82 Series

**Recommended Panel Hole Size:**  
ø1.427" to 1.447" (36.25 to 36.75 mm)  
**Panel Thickness:**  
up to 0.16" (4 mm)

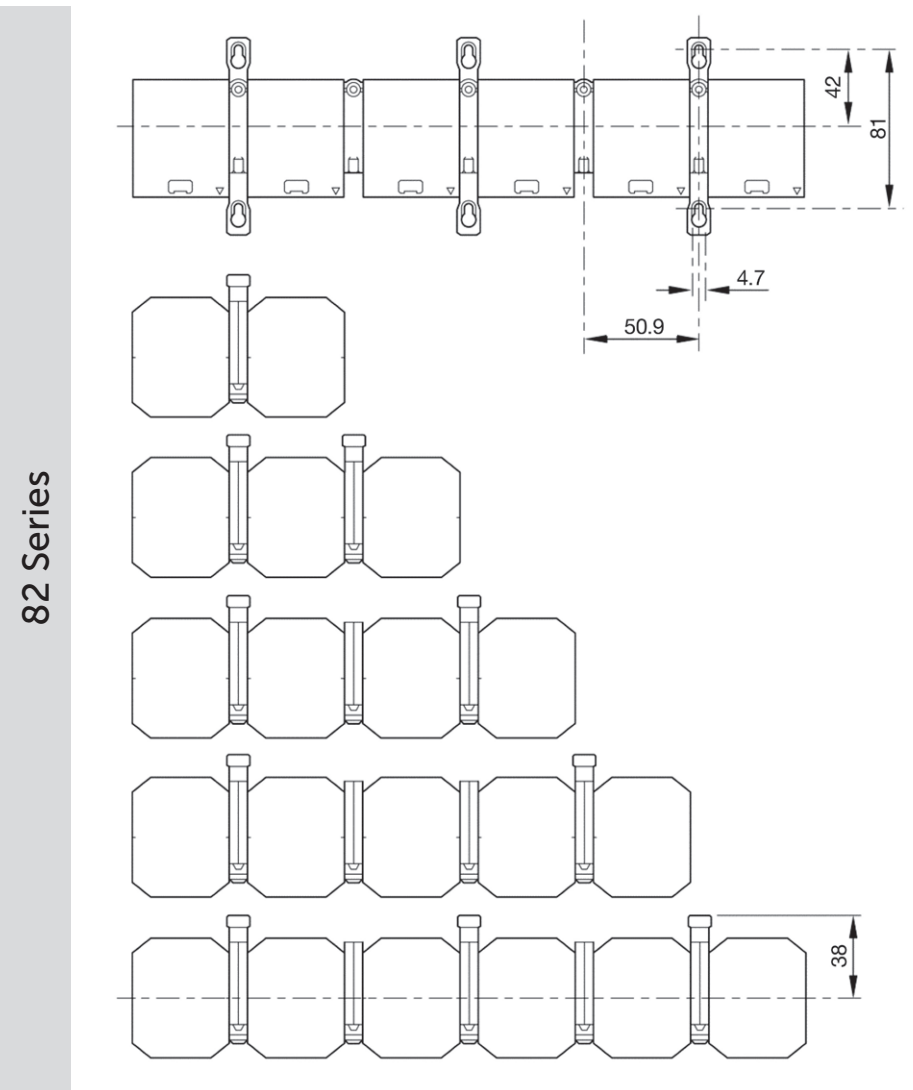
84 Series

**Recommended Panel Hole Size:**  
ø2.165" to 2.245" (55 to 57 mm)  
**Panel Thickness:**  
0.06" to 0.25" (2 to 6 mm)

Recommended Quickclamp Locations



84 Series

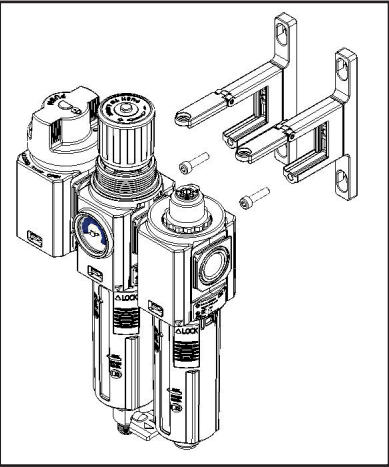


82 Series

\* Dimensions do not apply to smooth start dump valves.

Quickclamp

Quickclamp connection



Accessories: Quickclamp						
Description	82 Series	82 Series Extreme Temp	82 Series Rail Approved	84 Series	84 Series Extreme Temp	84 Series Rail Approved
Clamp	820014-51KIT	H820014-51KIT	L820014-51KIT	840014-51KIT	H840014-51KIT	L840014-51KIT
Clamp with bracket	820014-52KIT	H820014-52KIT	L820014-52KIT	840014-52KIT	H840014-52KIT	L840014-52KIT

19.5-15.9 IN-LB (1.8-2.2 Nm) 3mm Hex Ddrive

EXCLUDED FROM THE ATEX STATEMENT BELOW ARE P82/P84 VARIANTS EXCEPT ONES SHOWN BELOW. ADDITIONALLY ALL B84, R84, B82, R82 PART NUMBERS ENDING IN 'E' ALONG WITH THE Q84-\*\*\* AS ALL THESE VARIANTS ARE FITTED WITH THE INTEGRATED ELECTRONIC PRESSURE SENSOR.

ATEX Declaration of conformity


EU Declaration of conformity (DoC) 2014/34/EU

**Product:** Excelon® Plus T84, F84, R84, B84, T82, F82, R82, B82, LF84G, LF84C, LF84V, LB84G,LR84G HF84G, HF84C, HF84V, HB84G,HR84G,HT84T  
P-Valves: P82C-\*\*\*A-NNN, P82F-\*\*\*A-NNN, P84C-\*\*\*A-NNN, P84F-\*\*\*A-NNN

Manufacturers:

- Norgren Manufacturing de Mexico SA de CV  
Av. de la Montaña 120 Parque Industrial Querétaro, Santa Rosa Jauregui  
CP 76220 Oro, MX
- IMI International, spol. s.r.o. Evropska 852, Brno-Modrice, 664 42, Czech Republic

We declare that this declaration of conformity is issued under the sole responsibility of the above manufacturer.  
2014/34/EU Equipment and protective systems intended for use in potentially explosive atmospheres  
The following harmonised standards and technical specifications have been applied ISO 4414:2010 – Pneumatic fluid power – General rules and safety requirements for systems and their components; ISO 80079-36:2016 – Explosive atmospheres – Part 36: Non-electrical equipment for explosive atmospheres – Basic method and requirements; ISO 80079-37:2016 – Explosive atmospheres Part 37: Non-electrical equipment for explosive atmospheres – Non-electrical type of protection constructional safety "c", control of ignition sources "b", liquid immersion "k".



II 2 GD

Ex h IIC T6 Gb

Ex h IIIC T85°C Db

ATEX Certification No.: NORGREN 18.0001X

Notified body: CSA Group Netherlands B.V. No. 2813 (for the deposition of technical documentation) File ref: 18XT175

Under certain extreme circumstances, the non-metallic cover may generate an ignition-capable level of electrostatic charge. The equipment shall not be installed in a location where the external conditions are conducive to the build-up of electrostatic charge on such surfaces. Additionally, the equipment shall only be cleaned with a damp cloth.

Attestation of Conformity for components in accordance with Directive 2014/34/EU

We confirm the following equipment: All lubricators (Micro-fog and Oil-fog), gauges, connections kits, filter elements, brackets, and porting blocks conform to essential Health & Safety requirements of Directive 2014/34/EU and as such contain no potential ignition hazard for explosive environments.

UKCA Declaration Statement

Equipment and Protective Systems intended for use in Potentially Explosive Atmospheres Regulations 2016.  
**Product:** Excelon® Plus T84, F84, R84, B84, T82, F82, R82, B82, LF84G, LF84C, LF84V, LB84G,LR84G HF84G, HF84C, HF84V, HB84G,HR84G,HT84T  
P-Valves: P82C-\*\*\*A-NNN, P82F-\*\*\*A-NNN, P84C-\*\*\*A-NNN, P84F-\*\*\*A-NNN

Manufacturers:

- Norgren Manufacturing de Mexico SA de CV  
Av. de la Montaña 120 Parque Industrial Querétaro, Santa Rosa Jauregui  
CP 76220 Oro, MX
- IMI International, spol. s.r.o. Evropska 852, Brno-Modrice, 664 42, Czech Republic

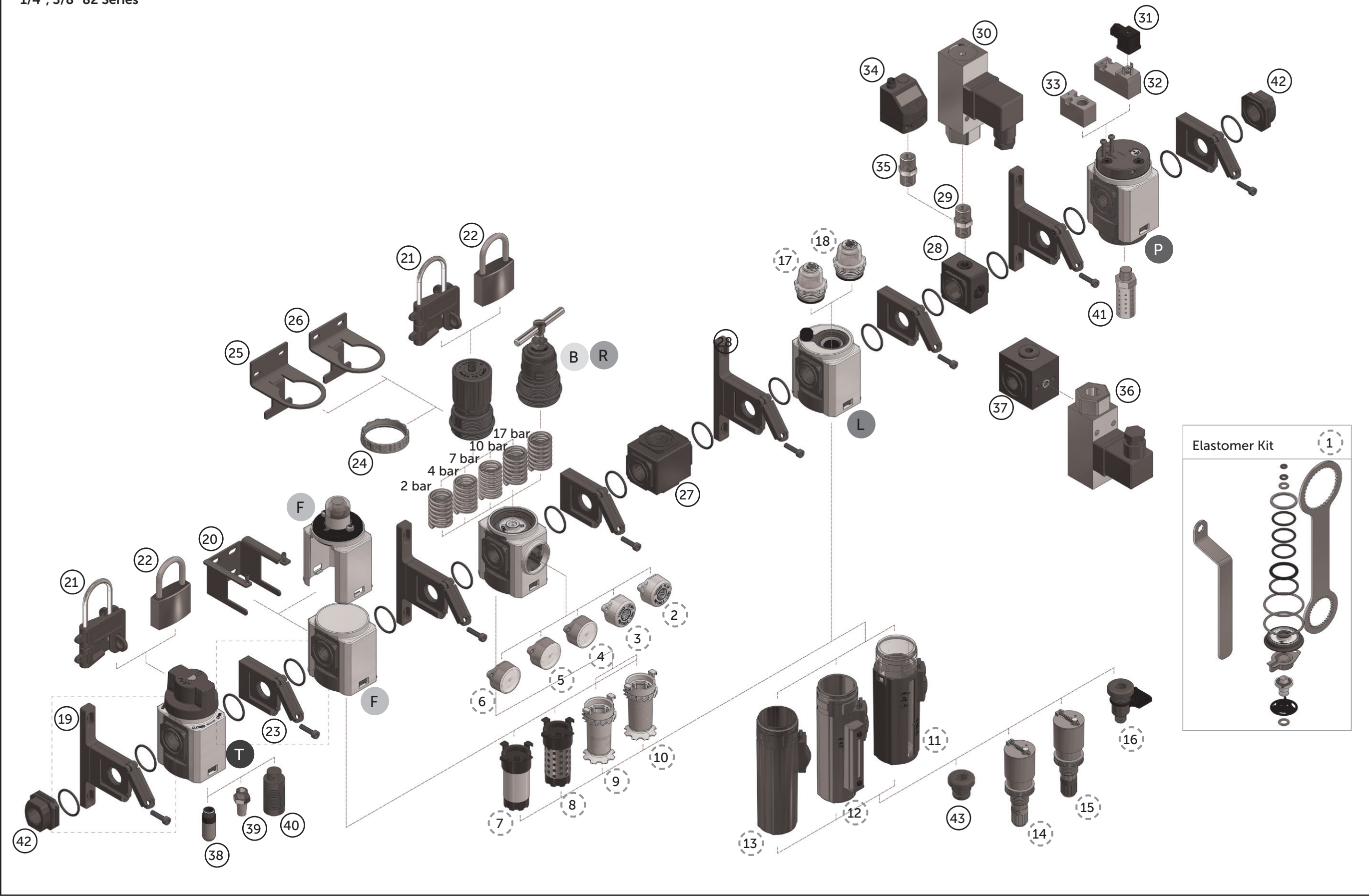
We declare that this declaration of conformity is issued under the sole responsibility of the above manufacturer.

 Technical Director:  
James Robinson  
2025



Excelon® Plus Accessories

1/4", 3/8" 82 Series



Letter	Full Unit Part No.	Description	Datasheet
B	B82G-*	General Purpose Filter Regulator	8.105.350.01
	F82G-*	General purpose filter (5 or 40 Micron)	8.105.150.01
	F82C-*	Coalescing Filter (0,01 µm)	8.105.155.01
	F82V-*	Oil vapour removal filters Remaining oil content: 0,003 mg/m³	8.105.160.01
R	R82R	Reverse Flow Regulator	8.105.250.01
	R82G-**K	General Purpose Regulator with Knob	8.105.250.01
	R82G-**T	General Purpose Regulator with T-Bar and metal bonnett	8.105.250.01
L	L82M-*	Micro-Fog® Lubricator	8.105.450.01
	L82C-*	Oil-Fog Lubricator	8.105.450.01
P	P82F-*	3/2 NC with Soft Start Dump Valve	8.105.611.01
	P82C-*	3/2 NC Dump Valve	8.105.611.01
T	T82T-*	Manual On/Off 3/2 valve	8.105.650.01
BL	BL82-*	Combination Unit (Box-Set)	8.105.855.01

Note: both P Valve types are available with Air-Pilot or Solenoid operator

Number	Spare Part No	Description
1	FRLB82-KIT	R82 / B82 Elastomer Kit. Relieving
2	820100-02KIT	Gauge adaptor kit - R 1/8
3	820100-01KIT	Gauge adaptor kit -1/8 NPT
4	820073-02KIT	Integrated 20 bar gauge
5	820073-01KIT	Integrated 10 bar gauge
6	820073-03KIT	Integrated 4 bar gauge
7	820044-50KIT	Coalescing Filter Element
8	820041-50KIT	Vapour Removal Filter Element
9	820038-50KIT	5 micron filter cartridge
10	820038-51KIT	40 micron filter cartridge
11 & 14	820025-53KIT	Guarded Poly bowl with auto drain, 1/4 PIF for F82G, F82C & B82 units
11 & 15	820025-51KIT	Guarded Poly bowl with auto drain 6 mm PIF for F82G, F82C & B82 units
12 & 14	820003-56KIT	Metal with S/Glass & auto drain, 1/4 PIF F82G, F82C & B82 units
12 & 15	820003-51KIT	Metal Bowl with S/Glass & auto drain,6 mm PIF for F82G, F82C & B82 units
11 & 16	820025-50KIT	Guarded Poly bowl with manual drain for F82G, F82C &B82 units
11 & 16	820003-50KIT	Metal with S/Glass & manual drain F82G,F82C & B82 units
11 & 43	820025-52KIT	Guarded Poly Bowl + Plug for F82V & L82 units
12 & 43	820003-52KIT	Metal Bowl with S/Glass + Plug for L82 units
13 & 43	820003-55KIT	Metal Bowl No Sight Glass + Plug "Coming soon"
14	6000-61KIT	Auto drain kit with metal Nut - Imperial (1/4" PIF)
15	6000-60KIT	Auto drain kit with metal Nut - Metric(6mm PIF)
16	619-50	Manual Drain (Q drain)
17	820055-51KIT	Oil fog Lubricator sight dome kit
18	820055-50KIT	Micro Fog Lubricator sight dome kit

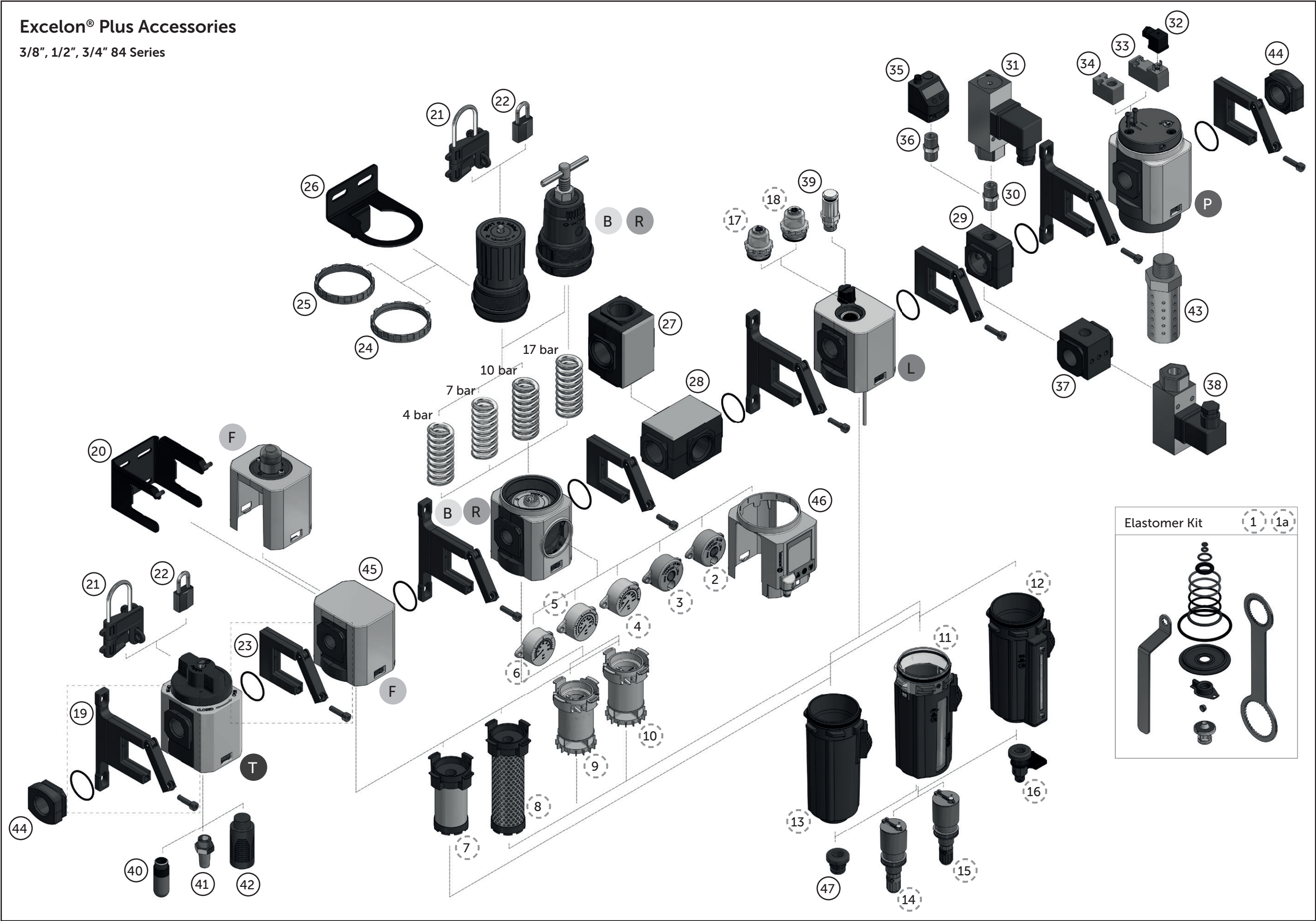
Number	Accessory Part No	Description
19	820014-52KIT	Quikclamp with bracket assembled
20	820024-50KIT	Filter unit mounting bracket
21	820055-02KIT	Padlock lock out device
22	820055-01KIT	Padlock
23	820014-51KIT	Quikclamp
24	820048-89KIT	Plastic Panel Mounting Nut
25	820068-02	Hybrid Neck mounting bracket (72 mounting hole ctrs)
24 & 25	820068-50KIT	Hybrid Neck Mount Bracket and Plastic Panel Nut
24 & 26	820068-51KIT	Neck Mount Bracket and Plastic Panel Nut
27	820028-50KIT	Full flow porting block 3/8 NPT
	820028-53KIT	Full flow porting block 3/8 ISO G
28	820016-51KIT	Pressure Sensing block 1/4 ISO G
	820016-50KIT	Pressure Sensing block 1/4 NPT
29	150202828	1/4" x 1/4" RC Nipple
30	880300	Pneumatic pressure switch 18D (0,5 ... 8 bar) *1) G1/4
31	V10027-D00	Plug & Cable Gland to DIN 43650 form C
	840650-50KIT	24V d.c Spare Coil for P82/P82 valve
32	840650-51KIT	110V a.c Spare Coil for P82/P82 valve
	840650-52KIT	220V a.c Spare Coil for P82/P82 valve
33	840623-51KIT	Air-Pilot manifold
34	54D-V110G-DD0-AA	Digital pressure switch 0-10bar 2xPNP output. 18-32V dc
	54D-V110G-DA1-AA	Digital pressure switch 0-10bar 1xPNP &1 analogue output. 18-32V dc
35	150202818	1/4" x 1/8" RC Nipple
36	881300	Pneumatic pressure switch 18D (0,5 ... 8 bar) *1) Interface type mounting
37	0523109000000000	Pressure switch interface block (18D pressure switch) Pneumatic pressure switch
38	M/S2	G1/4 Plastic Silencer *2)
	T40C2800	Sintered Bronze Silencer G1/4
39	MS002A	1/4 PTF Bronze Silencer *2)
40	0014600000000000	Plastic silencer G1/4 *2)
41	MB002B	Heavy duty muffler R1/4 male thread, brass wire element
	MB002A	Heavy duty muffler 1/4 NPT male thread, brass wire element
42	820015-02KIT	1/4 PTF Pipe Adaptor ( 2 Off)
	820015-03KIT	3/8 PTF Pipe Adaptor ( 2 Off)
	820015-09KIT	G1/4 Pipe Adaptor ( 2 Off)
	820015-10KIT	G3/8 Pipe Adaptor ( 2 Off)
43	N/A	Bowl Plug

\*1) Flanged version. For other pressure ranges, please see data sheet 5.11.001  
\*2) Max. Pressure of silencers listed in data sheet: 10 bar. For pressure higher than 10 bar please contact IMI Norgren.



Excelon® Plus Accessories

3/8", 1/2", 3/4" 84 Series



Letter	Full Unit Part No.	Description	Datasheet
B	B84G-*	General Purpose Filter Regulator	8.200.350.01
	F84G-*	General purpose filter (5 or 40 Micron)	8.200.150.01
	F84C-*	Coalescing Filter (0,01 µm)	8.200.155.01
	F84V-*	Oil vapour removal filters Remaining oil content: 0,003 mg/m3	8.200.160.01
R	R84G-**K	General Purpose Regulator with Knob	8.200.250.05
	R84G-**T	General Purpose Regulator with T-Bar and metal bonnett	8.200.250.05
L	L84M-*	Micro-Fog Lubricator	8.200.450.01
	L84C-*	Oil-Fog Lubricator	8.200.450.01
	P84F-*	3/2 NC with Soft Start Dump Valve	8.200.611.01
P	P84C-*	3/2 NC Dump Valve	8.200.611.01
T	T84T-*	Manual On/Off 3/2 valve	8.200.650.01
BL	BL84-*	Combination Unit (Box-Set)	8.200.855.01

Note: both P Valve types are available with Air-Pilot or Solenoid operator

Number	Spare Part No	Description
1	FRLB84-KIT	R84 / B84 Elastomer Kit. Relieving
1a	FRLB84NR-KIT	R84 / B84 Elastomer Kit. Non-Relieving
2	840100-02KIT	Gauge adaptor kit - R 1/8
3	840100-01KIT	Gauge adaptor kit - 1/8 NPT
4	840073-02KIT	Integrated 20 bar gauge
5	840073-01KIT	Integrated 10 bar gauge
6	840073-03KIT	Integrated 4 bar gauge
7	840044-50KIT	Coalescing Filter Element
8	840041-50KIT	Vapour Removal Filter Element
9	840038-50KIT	5 micron filter cartridge
10	840038-51KIT	40 micron filter cartridge
11 & 14	840025-53KIT	Guarded Poly bowl with auto drain, 1/4 PIF for F84G, F84C & B84 units
11 & 15	840025-51KIT	Guarded Poly bowl with auto drain 6 mm PIF for F84G, F84C & B84 units
12 & 14	840003-56KIT	Metal with S/Glass & auto drain, 1/4 PIF F84G, F84C & B84 units
12 & 15	840003-51KIT	Metal Bowl with S/Glass & auto drain,6 mm PIF for F84G, F84C & B84 units
11 & 16	840025-50KIT	Guarded Poly bowl with manual drain for F84G,F84C & B84 units
12 & 16	840003-50KIT	Metal with S/Glass & manual drain F84G,F84C & B84 units
11 & 47	840025-52KIT	Guarded Poly Bowl + Plug for F84V & L84 units
12 & 47	840003-52KIT	Metal Bowl with S/Glass + Plug for L84 units
13 & 47	840003-55KIT	Metal Bowl No Sight Glass + Plug for F84V
14	6000-61KIT	Auto drain kit with metal Nut - Imperial (1/4" PIF)
15	6000-60KIT	Auto drain kit with metal Nut - Metric (6mm PIF)
16	619-50	Manual Drain (Q drain)
17	840055-51KIT	Oil fog Lubricator sight dome kit
18	840055-50KIT	Micro Fog Lubricator sight dome kit

Number	Accessory Part No	Description
19	840014-52KIT	Quikclamp with bracket assembled
20	840024-50KIT	Filter unit mounting bracket
21	840055-02KIT	Padlock lock out device
22	840055-01KIT	Padlock
23	840014-51KIT	Quikclamp
24	840048-89KIT	Plastic Panel Mounting Nut
25	840048-01KIT	Metal Panel Mounting Nut
25 & 26	840068-51KIT	Neck Mount Bracket and Metal Panel Nut
24 & 26	840068-50KIT	Neck Mount Bracket and Plastic Panel Nut
27	840028-68KIT	Full flow porting block 3/4 NPT (Vertical mount)
	840028-69KIT	Full flow porting block 3/4 ISO G (Vertical mount)
	840028-50KIT	Full flow porting block 3/4 NPT (Horizontal mount)
28	840028-53KIT	Full flow porting block 3/4 ISO G (Horizontal mount)
	840016-51KIT	Pressure Sensing block 1/4 ISO G
29	840016-50KIT	Pressure Sensing block 1/4 NPT
	150202828	1/4" x 1/4" RC Nipple
31	0880300	Pneumatic pressure switch 18D (0,5 ... 8 bar) *1) G 1/4"
32	V10027-D00	Plug & Cable Gland to DIN 43650 form C
33	840650-50KIT	24V d.c Spare Coil for P82/P84 valve
	840650-51KIT	110V a.c Spare Coil for P82/P84 valve
	840650-52KIT	220V a.c Spare Coil for P82/P84 valve
34	840623-51KIT	Air-Pilot manifold
35	54D-V110G-DD0-AA	Digital pressure switch 0-10 bar 2xPNP output. 18-32V dc
	54D-V110G-DA1-AA	Digital pressure switch 0-10 bar 1xPNP & 1 analogue output. 18-32V dc
36	150202818	1/4" x 1/8" RC Nipple
37	0337717000000000	Pressure switch interface block (18D pressure switch) Pneumatic pressure switch
38	0881300	Pneumatic pressure switch 18D (0,5 ... 8 bar) *1) Interface type mounting
39	18-011-024	Lubricator Quick fill nipple
40	M/S2	G 1/4" Plastic Silencer *2)
41	T40C2800	Sintered Bronze Silencer G1/4 *2)
	MS002A	1/4" PTF Bronze Silencer *2)
42	0014600000000000	Plastic silencer G1/4" *2)
43	MB004B	Heavy duty muffler R1/2" male thread, brass wire element.
	MB004A	Heavy duty muffler 1/2" NPT male thread, brass wire element.
44	840015-01KIT	1/4 PTF Pipe Adaptor(2 Off)
	840015-02KIT	3/8 PTF Pipe Adaptor(2 Off)
	840015-03KIT	1/2 PTF Pipe Adaptor(2 Off)
	840015-04KIT	3/4 PTF Pipe Adaptor(2 Off)
	840015-09KIT	G1/4 Pipe Adaptor(2 Off)
	840015-10KIT	G3/8 Pipe Adaptor(2 Off)
	840015-11KIT	G1/2 Pipe Adaptor(2 Off)
45	840015-12KIT	G3/4 Pipe Adaptor(2 Off)
	840144-01-X10-KIT	O-Ring (Pack of 10 pcs)
46	N/A	IO link Sensor & Digital Gauge
47	N/A	Bowl Plug

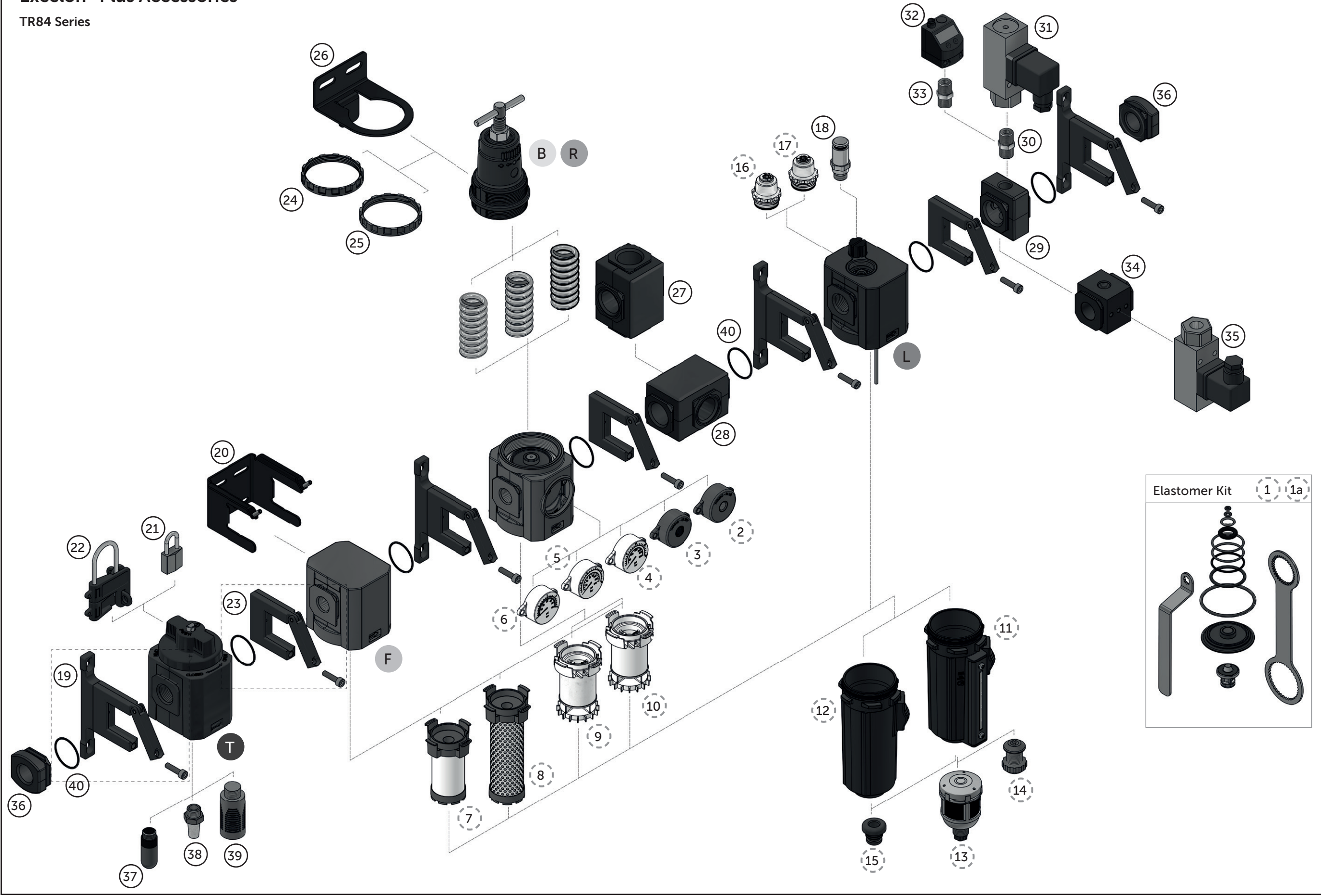
\*1) Flanged version. For other pressure ranges, please see data sheet 5.11.001

\*2) Max. Pressure of silencers listed in data sheet: 10 bar. For pressure higher than 10 bar please contact IMI Norgren.



Excelon® Plus Accessories

TR84 Series



Letter	Full Unit Part No.	Description	Datasheet
B	HB84G-*	General Purpose Filter Regulator	8.200.350.HB84G
	HF84G-*	General purpose filter (5 or 40 Micron)	8.200.150.HF84G
	HF84C-*	Coalescing Filter (0,01 µm)	8.200.155.HF84C
F	HF84V-*	Oil vapour removal filters Remaining oil content: 0,003 mg/m³	8.200.160.HF84V
	HR84G-**K	General Purpose Regulator with Knob	8.200.250.HR84G
R	HR84G-**T	General Purpose Regulator with T-Bar and metal bonnett	8.200.250.HR84G
L	HL84M-*	Micro-Fog Lubricator	8.200.450.HL84M.HL84C
	HL84C-*	Oil-Fog Lubricator	8.200.450.HL84M.HL84C
T	HT84T-*	Manual On/Off 3/2 valve	8.200.650.HT84
BL	HBL84-*	Combination Unit (Box-Set)	8.200.855.HBL84

Variant	H (TR Series)
Filter G (General Purpose)	-40°C to +80°C
Filter C (Coalescing)	-40°C to +80°C
Filter G (Vapor)	-40°C to +80°C
Regulator	-40°C to +80°C
Filter Regulator	-40°C to +80°C
Lubricator	-34°C to +80°C
Shut-Off Valve	-20°C to +80°C

Number	Spare Part No	Description
1	HFRLB84-KIT	HR84 / HB84 Elastomer Kit. Relieving.
1a	HFRLB84NR-KIT	HR84 / HB84 Elastomer Kit. Non-Relieving.
2	H840143-02KIT	Gauge adaptor kit (Metal) - R 1/8
3	H840143-01KIT	Gauge adaptor kit (Metal) - 1/8 NPT
4	840073-02KIT	Integrated 20 bar gauge
5	840073-01KIT	Integrated 10 bar gauge
6	840073-03KIT	Integrated 4 bar gauge
7	H840044-50KIT	Coalescing Filter Element
8	H840041-50KIT	Vapour Removal Filter Element
9	H840038-50KIT	5 micron filter cartridge
10	H840038-51KIT	40 micron filter cartridge
11&13	H840003-51KIT	Metal with S/Glass & auto drain, 1/8 BSPP HF84G, HF84C &HB84 units
11&14	H840003-50KIT	Metal with S/Glass & manual drain HF84G, HF84C &HB84 units
11&15	H840003-52KIT	Metal Bowl with S/Glass + Plug for HL84 units
12&15	H840003-55KIT	Metal Bowl No Sight Glass + Plug for HF84V
12&14	H840003-53KIT	Metal Bowl No Sight Glass + Manual Drain for HF84G, HF84C, HF84V & HB84G
12&13	H840003-54KIT	Metal Bowl No Sight Glass + auto drain 1/8 BSPP for HF84G, HF84C, HF84V & HB84G
13	3000-70	Auto drain kit with metal Nut - Imperial (1/8 BSPP )
14	684-85	Manual Drain (M drain)
15	N/A	Bowl Plug
16	H840055-51KIT	Oil fog Lubricator sight dome kit
17	H840055-50KIT	Micro Fog Lubricator sight dome kit

Please note For HB84G and HR84G fitted with integrated gauge the operating temperature is -20°C to +65°C  
When using a 54D (item 32) the operating temperature range is 0°C to +70°C  
When using a 18D (item 31 or 35) the operating temperature range is -10°C to +85°C

Number	Accessory Part No	Description
18	18-011-024	Lubricator Quick fill nipple
19	H840014-52KIT	Quikclamp with bracket assembled
20	840024-50KIT	Filter unit mounting bracket
21	840055-01KIT	Padlock
22	840055-02KIT	Padlock lock out device
23	H840014-51KIT	Quikclamp
24	840048-89KIT	Plastic Panel Mounting Nut
25	840048-01KIT	Metal Panel Mounting Nut
24 & 26	840068-51KIT	Neck Mount Bracket and Plastic Panel Nut
25 & 26	840068-50KIT	Neck Mount Bracket and Metal Panel Nut
27	H840028-68KIT	Full flow porting block 3/4 NPT (Vertical mount)
	H840028-69KIT	Full flow porting block 3/4 ISO G (Vertical mount)
28	H840028-50KIT	Full flow porting block 3/4 NPT (Horizontal mount)
	H840028-53KIT	Full flow porting block 3/4 ISO G (Horizontal mount)
29	H840016-51KIT	Pressure Sensing block 1/4 ISO G
	H840016-50KIT	Pressure Sensing block 1/4 NPT
30	150202828	1/4" x 1/4" RC Nipple
31	880300	Pneumatic pressure switch18D (0,5 ... 8 bar) *1) G 1/4"
32	54D-V110G-DD0-AA	Digital pressure switch 0-10 bar 2xPNP output. 18-32V dc.
	54D-V110G-DA1-AA	Digital pressure switch 0-10 bar 1xPNP & 1 analogue output. 18-32V dc.
33	150202818	1/4" x 1/8" RC Nipple
34	03377170000000000	Pressure switch interface block (18D pressure switch) Pneumatic pressure switch
35	881300	Pneumatic pressure switch 18D (0,5 ... 8 bar) *1) Interface type mounting
36	840015-01KIT	1/4 PTF Pipe Adaptor (2 Off)
	840015-02KIT	3/8 PTF Pipe Adaptor (2 Off)
	840015-03KIT	1/2 PTF Pipe Adaptor (2 Off)
	840015-04KIT	3/4 PTF Pipe Adaptor (2 Off)
	840015-09KIT	G1/4 Pipe Adaptor (2 Off)
	840015-10KIT	G3/8 Pipe Adaptor (2 Off)
	840015-11KIT	G1/2 Pipe Adaptor (2 Off)
	840015-12KIT	G3/4 Pipe Adaptor (2 Off)
37	M/S2	G 1/4" Plastic Silencer *2)
38	T40C2800	Sintered Bronze Silencer G1/4" *2)
	MS002A	1/4" PTF Bronze Silencer *2)
39	00146000000000000	Plastic silencer G1/4" *2)
40	840144-01-X10-KIT	O-Ring (Pack of 10 pcs)

\*1) Flanged version. For other pressure ranges, please see data sheet 5.11.001  
\*2) Max. Pressure of silencers listed in data sheet: 10 bar. For pressure higher than 10 bar please contact IMI Norgren.  
When using silencers the operation temperature range is as follow:  
M/S2: -20°C ... +80°C / T40: -20°C ... +80°C / 001600000000: -20°C ... +60°C / MS002A: -20°C ... max. +80°C  
Consult our Technical Service for use below 2°C