

T10 series

Ball Valve for Rail Applications

EN For further information, scan this QR code or visit www.imi.com

Installation and Maintenance Instructions



TECHNICAL DATA

Fluid: Compressed air
 Operating pressure: 0 ... 12 bar (0 ... 174 psig)
 Operating temperature*: -40 °C to +80 °C (-40 ° to 176 °F)
 * Air supply must be dry enough to avoid ice formation at temperatures below +2 °C (+35 °F)

Materials:
 Body, end connectors: Aluminium
 Handle: Zinc alloy
 Seat: PTFE
 'O'-rings: Synthetic Rubber
 Ball, Stem: Brass
 Screws: Steel

INSTALLATION

The ball valve must be connected to the system so it respects the direction of flow shown on the body of ball valve. The plugs must be removed before use.

Inline Mounted Valves

Use pipe thread sealant on male threads only. Do not allow sealant to enter interior of valve

Flange Mounted Valves

Attach valve to flange using screws + insert o-rings from attachment.

Disassembly

1. Shut off inlet pressure. Reduce pressure in inlet and outlet lines to zero.
2. Remove the valve from the air line. Disassemble in general accordance with item numbers on exploded view.

Cleaning

1. Clean all parts with warm water and soap.
2. Dry and inspect parts. Replace parts found to be damaged.

Assembly

1. Lubricate o-rings and seats (item 3, 4, 5, 7, 19) with light coat suitable grease with temperature range -40°C to +80°C (the grease should be based on synthetic hydrocarbon oil and calcium soap).
2. Assemble the unit as shown on the exploded view. Ball (item 6) must be assembled so the drilled hole can be seen in the outlet when the handle is in the closed position.

⚠ WARNINGS

These products are intended for general usage primarily for Rail sector. Do not use these products where pressures and temperatures can exceed those listed under Technical Data.

Compressed air, water, inert gases and any other fluid compatible with the valve materials. The ball valve is meant to open/close working fluid supply, not for flow regulation. Electric monitoring provides information about actual working status just in end positions. This signal is for information only and should not be used as a safety signal. Before disassembling of device placed behind the valve, the operator needs to check the system is depressurized by separate pressure indicator (e.g. pressure switch), even the signal from monitoring shows closed position of the valve. The valve equipped by electrical monitoring needs to be grounded to ensure proper protection against electric shock. End user is responsible for correct grounding and wire protection against damage.

OPTION SELECTOR

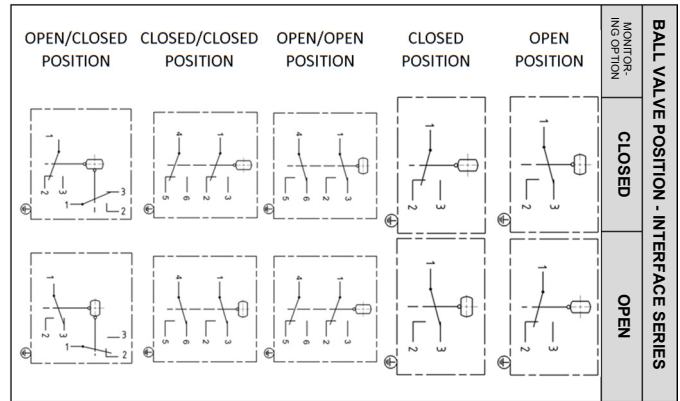
PORT SIZE	Substitute	THREAD TYPE	Substitute
1/4"	2	PTF	A
3/8" (ON REQUEST)	3	ISO Rc	B
NO THREAD (INTERFACE)	N	G THREAD	G
MONITORING OPTION	Substitute	NO THREAD (INTERFACE)	N
NO MONITORING	1	HANDLE	Substitute
OPEN POSITION	2	NO HANDLE	N
CLOSE POSITION	3	T-BAR	Substitute
OPEN/OPEN POSITION	4	WHITE	A
CLOSE/CLOSE POSITION	5	BLACK	B
OPEN/CLOSE POSITION	6	RED	C
HANDLE POSITION	Substitute	YELLOW	D
1 OPEN; 2 CLOSE	0	PORTS	Substitute
1 CLOSE; 2 OPEN	1	EX-HAUST M5	F
4 CLOSE; 1 OPEN	3	FULL BORE	L
		NO THREAD (INTERFACE)	D

REPLACEMENT ITEM

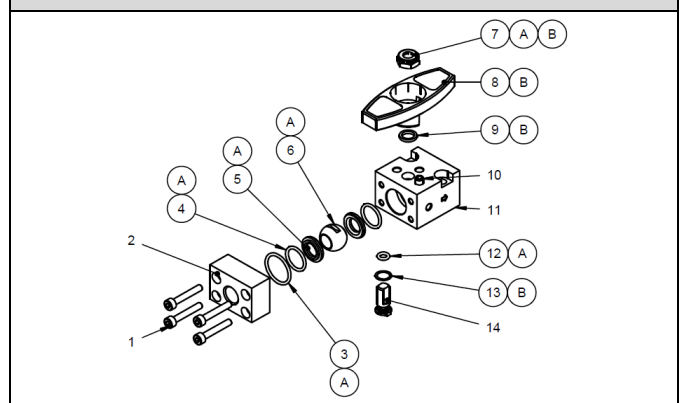
Service kit (items circled on exploded view)

TYPE OF BALL VALVE	Substitute
INLINE	T
INTERFACE	N
FULL BORE	F

T-BAR COLOUR	Substitute
WHITE	W
BLACK	B
RED	R
YELLOW	Y



INLINE VERSION



INTERFACE VERSION

