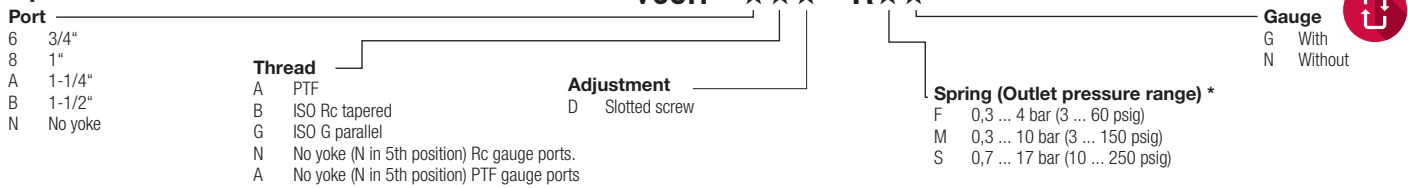


Option selector


* Relief valves can be adjusted to pressures in excess of, and less than, those specified. Do not use these units to control pressures outside of the specified ranges.

Technical features

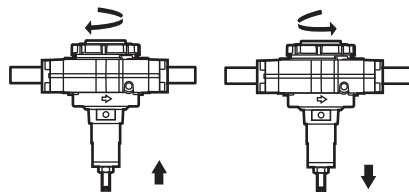
Fluid: Compressed air
 Maximum pressure: 20 bar (300 psig)
 Operating temperature*:
 -20° ... +80°C (0° ... +175°F)
 * Air supply must be dry enough to avoid ice formation at temperatures below +2°C (+35°F).
 Gauge ports:
 1/8 PTF with PTF yoke ports
 Rc1/8 with ISO Rc yoke ports
 Rc1/8 with ISO G yoke ports
 Exhaust port:
 1" PTF with PTF yoke ports
 Rc1 with ISO Rc yoke ports
 Rc1 with ISO G yoke ports
 Materials:
 Body: Aluminium
 Intermediate body: Aluminium
 Bonnet: Aluminium
 Bottom plug: Aluminium
 Adjusting screw: Steel
 Elastomers: Synthetic rubber
 Yoke: Aluminium

Replacement Items

Service kit
 (items circled on exploded view) 4384-300

Installation

- Install yoke in air line -
 - with air flow in direction of arrow on top of yoke,
 - as close as possible to the device being served,
 - at any angle.
- Connect piping to yoke ports using pipe thread sealant on male threads only.
- Install a pressure gauge or plug gauge ports.
- Lubricate o-rings (17) with a light coat of o-ring grease, then place o-rings in grooves in body (16).
- Place clamp ring under lugs on top of yoke.
- Make sure arrows on yoke and relief valve point in same direction, then plug relief valve into yoke and tighten clamp ring hand tight.


Warning

Do not cap or in any way restrict the outlet port of the relief valve. Relief port must be open to atmosphere.

Adjustment

- Turn relief valve adjustment clockwise to increase pressure setting. Turn adjustment counterclockwise to decrease pressure setting.
- Always approach the desired pressure from a lower pressure. When reducing from a higher to a lower setting, first reduce to some pressure less than that desired, then bring up to the desired pressure.

Disassembly

- Shut off inlet pressure. Reduce pressure in inlet and outlet lines to zero.
- Turn adjustment (3) fully counterclockwise.
- Unscrew clamp ring and remove regulator from yoke.
- Disassemble in general accordance with the item numbers on exploded view.

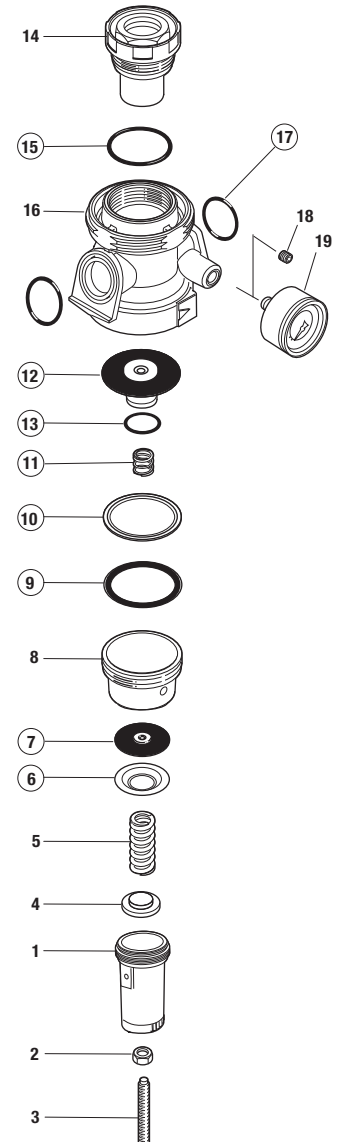
Cleaning

- Clean parts with warm water and soap.
- Rinse and dry parts. Blow out internal passages in body with clean, dry compressed air.
- Inspect parts. Replace those found to be damaged.

Assembly

- Lubricate o-rings, gasket (9), adjusting screw threads and tip (3) and the recess of spring rest (4) with a light coat of good quality o-ring grease. Apply grease to both sides of gasket (9).
- Lubricate threads on bonnet (1), intermediate body (8), and plug (14) with a small amount of anti-seize compound.
- Assemble the unit as shown on the exploded view.

Torque in	Item	N-m	(Inch-Pounds)
1 (Bonnet)	62 ... 68	(550 ... 600)	
8 (Intermediate body)	62 ... 70	(550 ... 620)	
18 (Pipe plug)	3,3 ... 5,5	(29 ... 49)	



WARNING

These products are intended for use in industrial compressed air systems only. Do not use these products where pressures and temperatures can exceed those listed under Technical Data.

To provide overpressure protection for pneumatic equipment, the flow capacity of the relief valve selected for a specific application must be greater than the maximum possible flow rate of the system connected to the inlet of the valve.

The accuracy of the indication of pressure gauges can change, both during shipment (despite care in packaging) and during the service life. If a pressure gauge is to be used with these products and if inaccurate indications may be hazardous to personnel or property, the gauge should be calibrated before initial installation and at regular intervals during use.

Before using these products with fluids other than air, for non industrial applications, or for life-support systems consult Norgren.

Use in potentially explosive atmospheres

Code of device according EC directive 94/9/EC ExII 2 GD c TX

- Only non-flammable gasese to be used as a medium.
- Surface temperature dependant on process fluid temperature and ambient temperature - must be below the ignition temperature of the flammable gas or dust.
- Earth unit and/or pipework to avoid electrostatic discharge.
- Precautions should be taken to prevent hazard from adiabatic compression.
- Use wet cloth for cleaning.
- Protect the unit from object falling onto it.
- Avoid contact with corrosive environment.
- For servicing the unit it is recommended to carry out this work outside of the danger zone.
- For details of ignition hazard assessment contact Norgren.