

T68 Shut-Off Valve Installation & Maintenance Instructions

Technical Data

Fluid: Compressed air
 Maximum pressure: 17 bar (250 psig)
 Operating temperature*: -20° to +80°C
 (0° to +175°F)
 * Air supply must be dry enough to avoid ice
 formation at temperatures below +2°C (+35°F).

Cv factor:

In to Out ports: 27,5

Out to Exhaust ports: 0,16

Exhaust port threads on T68H model: G 1/4

Materials:

Body: Aluminium

Handle: Zinc

Elastomers: NBR

Ball: Brass

Replacement Items

Service kit

(items circled on exploded view) 4384-310

Installation

Yoke Mounted Valves

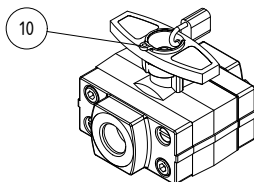
1. Lubricate o-ring (3) with a light coat of o-ring grease, then place o-ring in groove in yoke.
2. Attach valve to yoke using screws (1) and nuts (2). Attach to T68 to inlet end of yoke (T68 models with B in 7th position of model number) or to outlet end of yoke (T68 models with C in 7th position of model number). Arrows on yoke and on T68 label must point in same direction.
3. Connect piping to T68 port using pipe thread sealant on male threads only.

In-line Mounted Valves

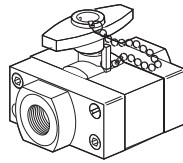
Install valve in air line with air flow in direction of arrow on label. Use pipe thread sealant on male threads only. Do not allow sealant to enter interior of valve.

Padlock Installation

The yellow handle on T68E valves can be locked in the closed position only. The black handle on T68A, T68C, and T68H valves can be locked in the open or closed positions. Locking positions can be secured with the use of a padlock that should be fitted through the hole in the handle & locking ring (10). The maximum diameter of the padlock shackle must be 5mm.



In-line mounted valves



Disassembly

1. Shut off inlet pressure. Reduce pressure in inlet and outlet lines to zero.
2. Remove the valve from the air line.
Disassemble in general accordance with the item numbers on exploded view.

Cleaning

1. Clean all parts with warm water and soap.
2. Dry and inspect parts. Replace parts found to be damaged.

Assembly

1. Lubricate o-rings and seats (7) with a light coat of good quality o-ring grease.
2. Assemble the unit as shown on the exploded view. Ball (8) on exhausting type valves (T68C, T68E, T68H) must be assembled so the drilled hole can be seen in the outlet when the handle is in the closed position.

WARNING

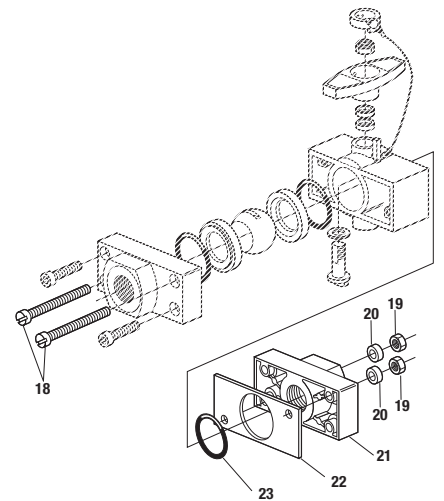
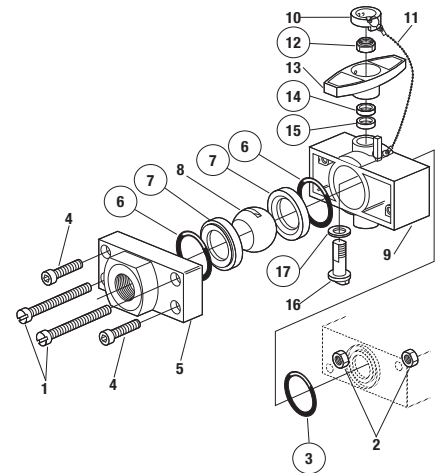
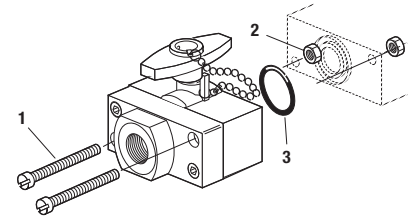
These products are intended for use in industrial compressed air systems only. Do not use these products where pressures and temperatures can exceed those listed under Technical Data. Before using these products with fluids other than air, for non industrial applications, or for life-support systems consult Norgren.

Use in potentially explosive atmospheres

Code of device according EC directive 94/9/EC ExII 2 GD c TX

- Only non-flammable gases to be used as a medium.
- Surface temperature dependant on process fluid temperature and ambient temperature - must be below the ignition temperature of the flammable gas or dust.
- Earth unit and/or pipework to avoid electrostatic discharge.
- Precautions should be taken to prevent hazard from adiabatic compression.
- Use wet cloth for cleaning.
- Protect the unit from object falling onto it.
- Avoid contact with corrosive environment.
- For servicing the unit it is recommended to carry out this work outside of the danger zone.
- For details of ignition hazard assessment contact Norgren.

Yoke mounted valves



Option selector

