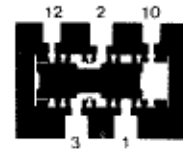
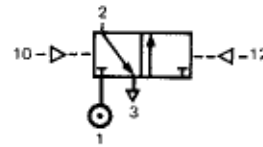
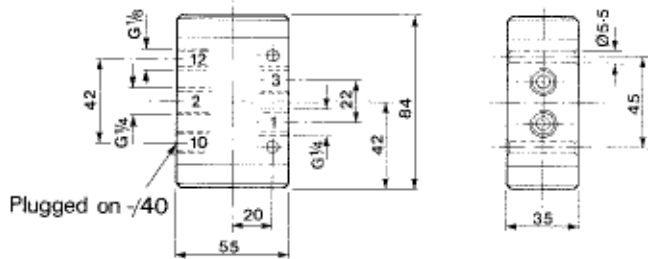


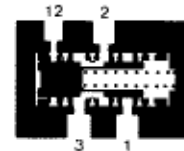
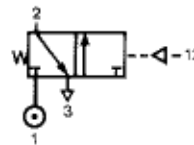
OBSOLETE DOCUMENT
 Technical Reference Only



M/20132/3

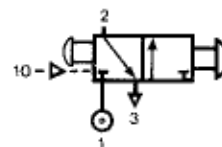
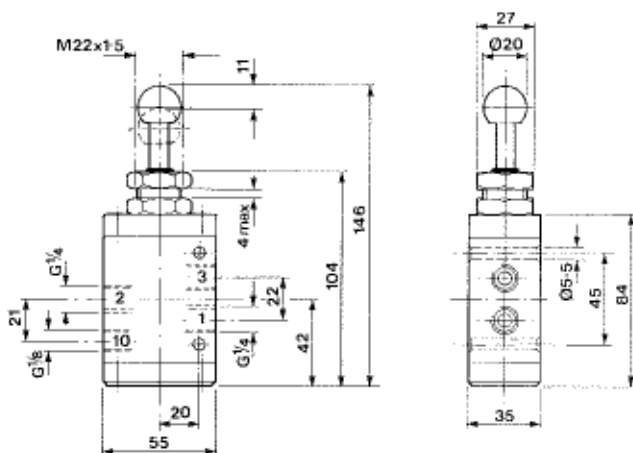
Pressure set - reset
 Pilot pressure : 1.5 bar minimum

These models dimensionally the same



M/20132/40

Pressure actuated, spring return
 Pilot pressure : 1.8 + (0.1 × supply pressure) bar



M/20132/29

Button set, button or pressure reset, with provision for panel mounting
 Manual operating force : 25N
 Reset pressure : 1.5 + (0.1 × system pressure) bar.