

Ready to use

Manufactured from NSF (51 & 61) approved materials for use in food and water applications.

Releasable stainless-steel grab-ring offers fast, secure assembly and disassembly of nylon, PU and PE tubing.

Suitable for use in medical and analytical equipment including fluid and precision gas control.

Appropriate for inert gas and industrial air applications.



Technical data

Medium:

Air and liquids

Operating pressure:

Vacuum up to 29.5" Hg (750 mm Hg):
5/32" to 5/16", -4°F to 68°F (-20°C to 20°C), 230 psig (16 bar)
3/8" to 1/2", -4°F to 68°F (-20°C to 20°C), 170 psig (12 bar)
5/32" to 5/16", 68°F to 149°F (20° to 65°C), 150 psig (10 bar)
3/8" to 1/2", 68°F to 149°F (20° to 65°C), 100 psig (7 bar)

Temperature:

-4°F to 149°F (-20°C to 65°C)

Materials:

Body: Acetal
Seals: Food and water grade NBR
Collet: PBT with Stainless Steel teeth

Tube sizes:

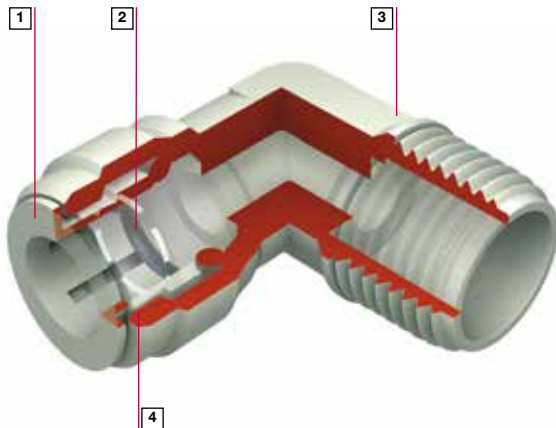
5/32", 3/16", 1/4", 5/16", 3/8" and 1/2"

Thread sizes:

1/8", 1/4", 3/8", 1/2", 5/8" NPTF

Tube types:

Nylon, Polyurethane, Polyethylene



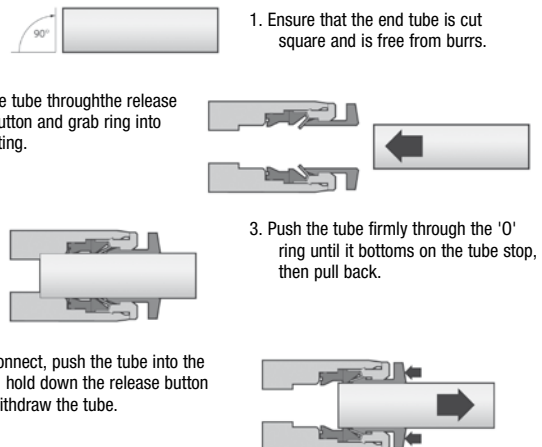
1 Collet- unique oval shape allowing for easier connecting and disconnecting.

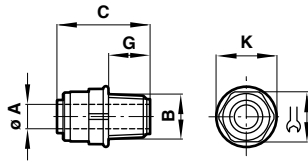
2 O-ring - NBR provides leak proof seal.

3 Body and cap - made of highly durable acetal copolymer (POM).

4 Stainless steel teeth - holds tubing in place

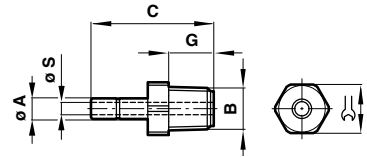
Method of assembly





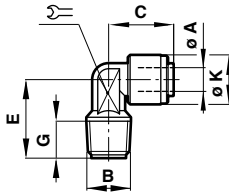
Straight Adapter

Part Number	Ø A	B NPTF	C*	G	Ø K	
D24250218	5/32	1/8	0.94	0.36	0.70	5/8
D24250228	5/32	1/4	1.10	0.52	0.70	5/8
D24250318	3/16	1/8	0.95	0.36	0.70	5/8
D24250418	1/4	1/8	1.02	0.36	0.70	5/8
D24250428	1/4	1/4	1.19	0.52	0.70	5/8
D24250438	1/4	3/8	1.21	0.54	0.84	3/4
D24250518	5/16	1/8	1.05	0.36	0.84	3/4
D24250528	5/16	1/4	1.21	0.52	0.84	3/4
D24250538	5/16	3/8	1.23	0.54	0.84	3/4
D24250618	3/8	1/8	1.15	0.36	0.91	13/16
D24250628	3/8	1/4	1.31	0.52	0.91	13/16
D24250638	3/8	3/8	1.34	0.54	0.91	13/16
D24250648	3/8	1/2	1.50	0.70	0.98	7/8
D24250738	1/2	3/8	1.53	0.54	1.08	31/32
D24250748	1/2	1/2	1.68	0.70	1.08	31/32



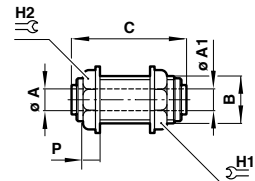
Straight Stem Adapter

Part Number	Ø A	B NPTF	C	G	Ø S	
D24150418	1/4	1/8	1.34	0.36	0.18	1/2
D24150428	1/4	1/4	1.50	0.52	0.18	5/8
D24150518	5/16	1/8	1.38	0.36	0.18	1/2
D24150628	3/8	1/4	1.66	0.52	0.26	5/8
D24150638	3/8	3/8	1.70	0.54	0.26	3/4
D24150738	1/2	3/8	1.86	0.54	0.37	3/4
D24150748	1/2	1/2	2.02	0.70	0.37	15/16



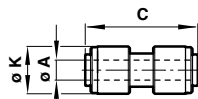
Elbow Adapter

Part Number	Ø A	B NPTF	C*	E	G	Ø K	
D24450418	1/4	1/8	0.67	0.79	0.36	0.59	7/16
D24450428	1/4	1/4	0.67	0.94	0.52	0.59	7/16
D24450438	1/4	3/8	0.67	0.87	0.54	0.59	7/16
D24450628	3/8	1/4	0.80	0.94	0.52	0.79	9/16
D24450638	3/8	3/8	0.80	0.94	0.54	0.79	9/16
D24450738	1/2	3/8	1.00	1.18	0.54	0.91	11/16
D24450748	1/2	1/2	1.00	1.24	0.70	0.91	11/16



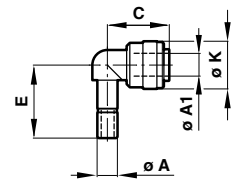
Bulkhead Union

Part Number	Ø A	Ø A1	B	C*	P	H1	H2
D20290400	1/4	1/4	M17X1.5	1.35	0.28	0.75	0.83
D20290500	5/16	5/16	M20X1.75	1.52	0.31	0.83	1.00
D20290600	3/8	3/8	M24X1.75	1.67	0.33	0.94	1.12
D20290700	1/2	1/2	M27X2.0	2.04	0.35	1.06	1.2



Straight Union

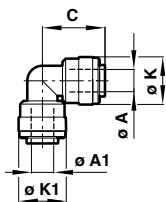
Part Number	Ø A	C*	Ø K
D20200200	5/32	1.25	0.52
D20200300	3/16	1.28	0.54
D20200400	1/4	1.43	0.61
D20200500	5/16	1.50	0.69
D00200600	3/8	1.70	0.79
D00200700	1/2	2.09	0.93



Stem Elbow

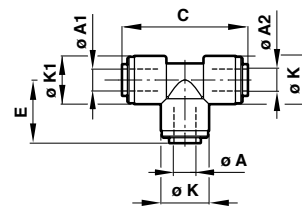
Part Number	Ø A	Ø A1	C*	E	Ø K
D20430200	5/32	5/32	0.69	0.71	0.52
D20430300	3/16	3/16	0.71	0.73	0.54
D20430400	1/4	1/4	0.79	0.83	0.61
D20430500	5/16	5/16	0.84	0.89	0.69
D20430600	3/8	3/8	0.96	0.98	0.79
D20430700	1/2	1/2	1.21	1.16	0.93

Dimensions in Inches



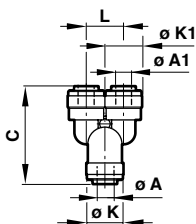
Union Elbow

Part Number	ø A	ø A1	C*	ø K	ø K1
D20400200	5/32	5/32	0.96	0.52	0.52
D20400300	3/16	3/16	1.00	0.54	0.54
D20400400	1/4	1/4	1.13	0.61	0.61
D20400500	5/16	5/16	1.21	0.69	0.69
D20400600	3/8	3/8	1.41	1.41	1.41
D20400700	1/2	1/2	1.71	0.91	0.91



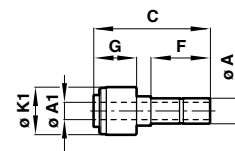
Union Tee

Part Number	ø A	ø A1	ø A2	C*	E*	ø K	ø K1
D20600200	5/32	5/32	5/32	1.41	0.69	0.53	0.51
D20600300	3/16	3/16	3/16	1.46	0.69	0.54	0.51
D20600400	1/4	1/4	1/4	1.65	0.79	0.61	0.59
D20600500	5/16	5/16	5/16	1.72	0.83	0.69	0.67
D20600600	3/8	3/8	3/8	2.04	0.98	0.79	0.79
D20600700	1/2	1/2	1/2	2.51	1.18	0.91	0.91



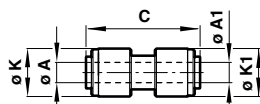
Union Y

Part Number	ø A	ø A1	C*	ø K	ø K1	L
D20820400	1/4	1/4	1.53	0.61	0.61	0.61
D20820600	3/8	3/8	1.83	0.79	0.79	0.79
D20820700	1/2	1/2	2.24	0.91	0.91	0.91



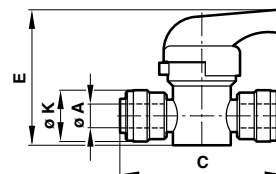
Stem Reducer (stem/tube)

Part Number	ø A	ø A1	C*	F	G	ø K1
D20230504	5/16	1/4	1.60	0.89	0.67	0.61



Straight Union (Unequal)

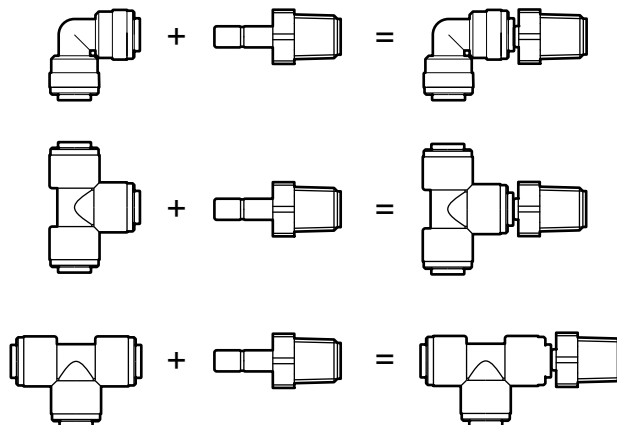
Part Number	ø A	ø A1	C*	ø K	ø K1
D20200504	5/16	1/4	1.45	0.69	0.69
D20200605	3/8	5/16	1.67	0.79	0.79
D20200706	1/2	3/8	2.06	0.93	0.99



Hand Valve (Union)

Part Number	ø A	C*	E	ø K
D20GR0400	1/4	2.04	1.36	0.61
D20GR0600	3/8	2.49	1.67	0.79
D20GR0700	1/2	2.79	1.67	0.91

Adaptability



Dimensions in Inches