

In Line Push-In Non-Return Valves  
4, 6, 8, 10, 12mm ØD Metric tube  
5/32", 1/4", 5/16", 3/8", 1/2" Inch tube

- Allow free flow in one direction only
- Simple reliable design
- Low weight
- Low cracking pressure
- High operating pressure



## Technical Data

### Medium:

Compressed air, filtered,  
lubricated and non-lubricated, vacuum

### Operation

Non-Return Valve

### Operating Pressure:

-0.9 to 16 bar

(Dependent upon operating specification of tubing)

### Operating Temperature:

-20°C\* to +80°C

\* Consult our Technical Service for use below +2°C

### Mounting:

Line mounted, push-in connection

### Port Size:

OD Metric tube	OD Inch tube
4mm T50P0004	5/32" T50Y0002
6mm T50P0006	1/4" T50Y0004
8mm T50P0008	5/16" T50Y0005
10mm T50P0010	3/8" T50Y0006
12mm T50P0012	1/2" T50Y0007

## Materials

Anodized aluminium body, nickel plated brass collet, aluminium valve and insert, stainless steel spring, nitrile rubber seals

## Tubing Types

Nylon 11 or 12. Polyurethane, and other plasticated or unplasticated tubing which conforms to the tolerances specified in BS 5409, part 1, 1976, light and normal duty, DIN 73378, DIN 74234, NFE 49-100.

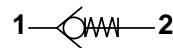
## Ordering Information

To order, quote appropriate product number from the tables on the following pages.  
e.g. T50P0010 for Metric tube 10mm ØD

## Alternative Models

M,C/520 range of heavy duty brass non-return valves.

See page 5.10.001.01





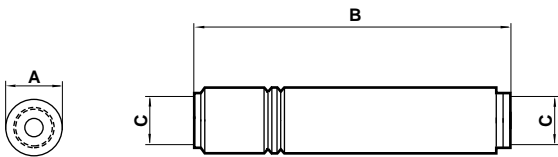
General Information

Model	Tube Size	Flow Factor	Cracking	Weight	Spares Kit		
Metric	Inch	Metric	Inch	Cv*/C**	pressure bar	(gs)	
T50P0004	T50Y0002	4	5/32	0.09/0.38	0,03	10	Not Available
T50P0006	T50Y0004	6	1/4	0.38/1.57	0,03	16	Not Available
T50P0008	T50Y0005	8	5/16	0.78/3.2	0,03	22	Not Available
T50P0010	T50Y0006	10	3/8	1.103/4.5	0,03	48	Not Available
T50P0012	T50Y0007	12	1/2	1.64/6.7	0,03	64	Not Available

\*CV measured in US gall/min  
 \*\*C measured in dm<sup>3</sup>/(s.bar)

Non-return Valve

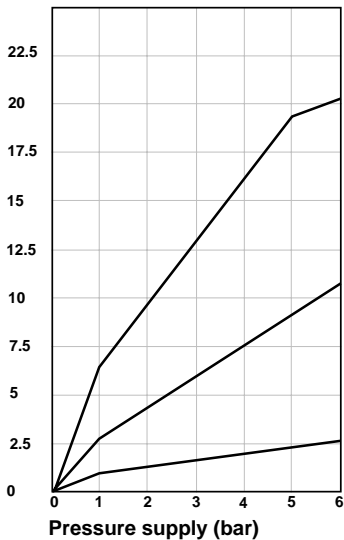
Model T50P or T50Y



Model	T50P0004	T50Y0002	T50P0006	T50Y0004	T50P0008	T50Y0005	T50P0010	T50Y0006	T50P0012	T50Y0007
A	11,0	11,0	13,0	13,0	15,0	16,0	20,0	20,0	22,0	22,0
B	49,0	49,0	55,7	55,7	60,9	60,9	77,4	77,4	88,4	88,4
C	4,0	5/32	6,0	1/4	8,0	5/16	10,0	3/8	12,0	1/2

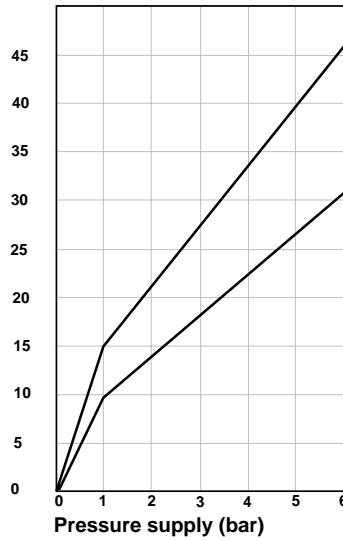
Flow versus Pressure supply

Flow measured in dm<sup>3</sup>/(s. bar)



KEY  
 — T50P0008  
 — T50P0006  
 — T50P0004

Flow measured in dm<sup>3</sup>/(s. bar)



KEY  
 — T50P0012  
 — T50P0010

Tests conducted at standard reference conditions (ISO6538)

Warning

These products are intended for use in industrial compressed air systems only. Do not use these products where pressures and temperatures can exceed those listed under 'Technical Data'. Before using these products with fluids other than those specified, for non-industrial applications, life-support systems, or other applications not within published specifications, consult Norgren. Through misuse, age, or malfunction, components used in fluid power systems can fail in various modes. The system designer is warned to consider the failure modes of all component parts used in fluid power systems and to provide adequate safeguards to prevent personal injury or damage to equipment in the event of such failure. **System designers must provide a warning to end users in the system instructional manual if protection against a failure mode cannot be adequately provided.** System designers and end users are cautioned to review specific warnings found in instruction sheets packed and shipped with these products where applicable.