


**3/2 Spool Valves
Pressure Actuated
M22 x 1.5 Ports**

- Specifically suited for vehicle applications
- Compact, attractive styling
- High flow
- In-line ports
- Glandless spool


Technical Data
Medium:

Compressed air, filtered, lubricated and non-lubricated

Operation:

Spool valve, pressure actuated

Mounting:

Through-holes in valve body

Port Size:

M22 x 1.5

Operating Pressure:

1-10 bar

0-930 mbar vacuum

Pilot Pressure:

2 bar min.

Flow (to CETOP RP50P):

'C' - Conductance dm³/s/bar 13,38

'b' - Critical pressure ratio 0,66

Cv 4,33

Operating Temperature:

-20°C* to +80°C

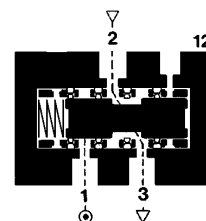
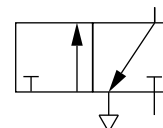
*Consult our Technical Service for use below +2°C

Materials

Diecast zinc alloy body, stainless steel spool and sleeve.

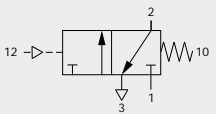
Ordering Information

To order, quote model number from table overleaf, e.g. SPAB/60787 for the Pressure Set model.

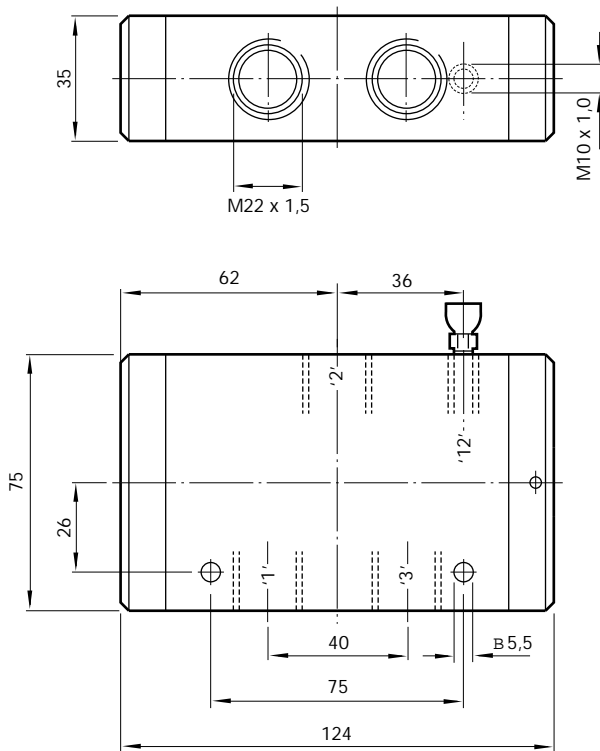




General Information

Symbol	Model	Operator	Return	Weight (kg)	Spares kit
	SPAB/60787	Pilot	Spring	0,25	-

Pressure Actuated, Spring Return



Warning

These products are intended for use in industrial compressed air systems only. Do not use these products where *pressures* and *temperatures* can exceed those listed under 'Technical Data'.

Before using these products with fluids other than those specified, for non-industrial applications, life-support systems, or other applications not within published specifications, consult NORGREN.

Through misuse, age, or malfunction, components used in fluid power systems can fail in various modes. The system designer is warned to consider the failure modes of all component parts used in fluid power systems and to provide adequate safeguards to prevent personal injury or damage to equipment in the event of such failure.

System designers must provide a warning to end users in the system instructional manual if protection against a failure mode cannot be adequately provided.

System designers and end users are cautioned to review specific warnings found in instruction sheets packed and shipped with these products.