

**Solenoid coils
22 mm and 30 mm****22 mm (0,87 in) and 30 mm (1,18 in) coil width sizes****Range of power levels available****Table A & Table B to DIN 43650, metal M12*1 4-pin and
Industrial Standard Electrical Connections****Supplied without connector plug****UL approved coils****M12 connector DESINA compliant****Technical data**

Duty:

100% ED (Continuously Rated)

Voltage:

As specified

Voltage tolerance:

±10%

Operating temperature:

-20°C to +50°C (-4°F to +122°F) ambient air

Weight (nominal):

22 mm coil: 63g (0,14lb)

30 mm coil: 96g (0,21lb)

Materials

Glass reinforced thermoplastic

Note: The specifications for the UL coils are determined and detailed in the UL certification but generally conform to the details as shown above.**Ordering information**To order, quote model number as indicated in the tables overleaf: e.g. **QM/48/12J/21** for 22 mm (0,87in) coil with Industrial Standard Connector 12V DC, 2W Power.

Plugs to be ordered separately. See data sheet 7.7.001.

These coils can be used on ISO★STAR, MIDI★STAR, AUTO★STAR, NAMUR★STAR, Super X, XF Series V60-62, SE 9300, Slow Start Dump Valves, M/1748, M/20000 and UM/22000 Valves.



General information

22 mm (0,87 in) Table B, M12 & Industrial Standard Coils

Industrial Standard		Table B DIN 43650		M12x1	Voltage	Power	Power inrush	Valve match
Standard	UL approved	Standard	UL approved	DESINA		hold	AC only	code*
QM/48/12J/21	V10622-AA2	V10626-A12L	V10626-AA2	–	12 V d.c.	2 W	–	1
QM/48/13J/21	V10622-AA3	V10626-A13L	V10626-AA3	V10628-A13W	24 V d.c.	2 W	–	1
QM/48/1CJ/21	V10622-AAC	V10626-A1CL	V10626-AAC	–	12 V a.c.	2,5 VA	4 VA	1
QM/48/14J/21	V10622-AA4	V10626-A14L	V10626-AA4	–	24 V a.c.	2,5 VA	4 VA	1
QM/48/18J/21	V10622-AA8	V10626-A18L	V10626-AA8	–	110/120 V a.c.	2,5 VA	4 VA	1
QM/48/19J/21	V10622-AE9	V10626-A19L	V10626-AE9	–	230 V a.c.	5 VA	6 VA	1
QM/48/82J/21		V10626-A82L		–	12 V d.c.	7,5 W	–	2
QM/48/83J/21		V10626-A83L		V10628-A83W	24 V d.c.	6 W	–	2
QM/48/87J/21		V10626-A87L		–	110 V d.c.	7,5 W	–	2
QM/48/84J/21		V10626-A84L		–	24 V a.c.	8 VA	9 VA	2
QM/48/88J/21		V10626-A88L		–	110/120 V a.c.	8 VA	9 VA	2
QM/48/89J/21		V10626-A89L		–	230 V a.c.	8 VA	9 VA	2

30 mm (1.18 in) Table A Coils

Table A DIN 43650		Voltage	Power	Power inrush	Valve match
Standard	UL approved		hold	AC only	code*
V10633-A22N	V10633-AA2	12 V d.c.	1,5 W	–	1
V10633-A23N	V10633-AA3	24 V d.c.	1,5 W	–	1
V10633-A24N	V10633-AA4	24 V a.c.	2 VA	3 VA	1
V10633-A28N	V10633-AA8	110/120 V a.c.	2 VA	3 VA	1
V10633-A29N	V10633-AA9	230 V a.c.	3 VA	4 VA	1
V10633-A32N	V10633-AB2	12 V d.c.	4 W	–	2
V10633-A33N	V10633-AB3	24 V d.c.	4 W	–	2
V10633-A37N	V10633-AB7	110 V d.c.	4 W	–	2
V10633-A84N		24 V a.c.	8 VA	10 VA	2
V10633-A88N		110/120 V a.c.	8 VA	10 VA	2
V10633-A89N		230 V a.c.	8 VA	10 VA	2

* Use this match code to help you select the correct valve for your chosen coil: e.g. refer to Pilot CNOMO Valve Data Sheet No. 5.4.020

Additional coil options available on request

Alternative connector options such as flying leads or 2-pin connectors are available on request. Please contact our Technical Service for further details.

All above mentioned coils have a voltage tolerance of ±10% and are rated IP65 (with plug) (DIN 40 050, EN 60529)

Connector plug details*

Description	Details
Industrial Standard for 22 mm coils	Pg9
DIN 43650 Table B for 22 mm coils	Pg9
M12 for 22mm coils	M12x1 4-Pin
DIN 43650 Table A for 30 mm coils	Pg11

* Please refer to section 7.7.001 for information on the full plug range

Warning

These products are intended for use in industrial compressed air systems only. Do not use these products where pressures and temperatures can exceed those listed under "Technical Data".

Before using these products with fluids other than those specified, for non-industrial applications, life support systems, or other applications not within published specifications, consult Norgren.

Through misuse, age, or malfunction, components used in fluid power systems can fail in various modes.

The system designer is warned to consider the failure modes of all component parts used in fluid power systems and to provide adequate safeguards to prevent personal injury or damage to equipment in the event of such a failure.

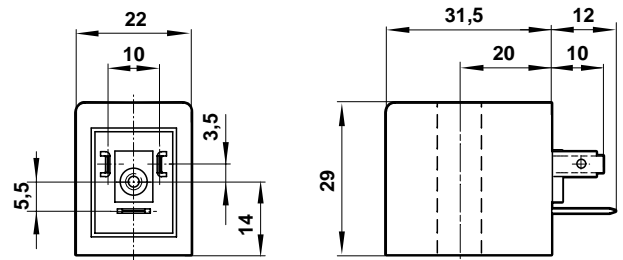
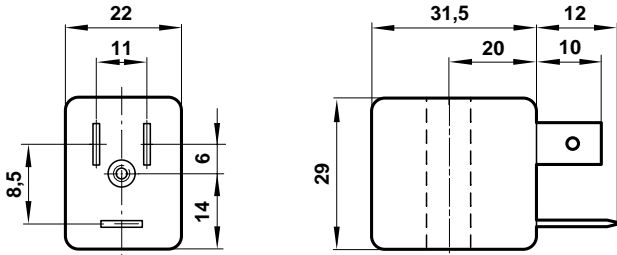
System designers must provide a warning to end users in the system instruction manual if protection against such a failure mode cannot be adequately provided.

System designers and end users are cautioned to review specific warnings found in instruction sheets packed and shipped with these products where applicable.



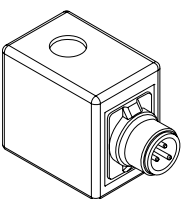
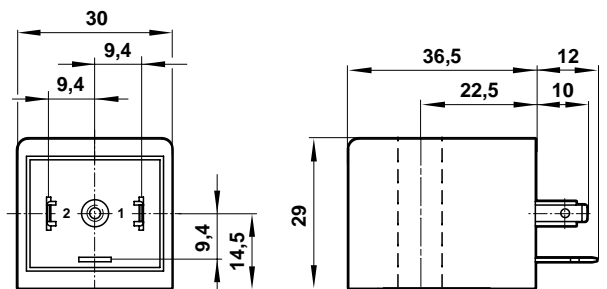
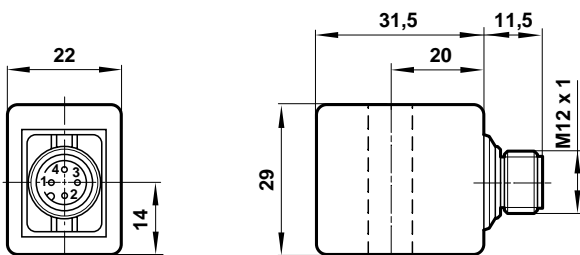
**QM/48 & V10622 22 mm (0,87 in)
Industrial Standard Coil**

V10626 22 mm (0,87 in) Table B Coil

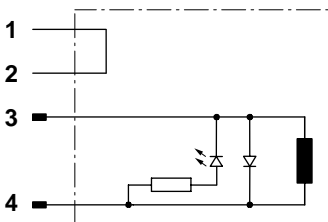


V10628 22 mm (0,87 in) M12 Coil

V10633 30mm (1,18 in) Table A Coil



Wiring diagram & pin allocation M12



Pin number	Pin allocation
1	24 V DC (not connected to solenoid)
2	Connected to Pin 1 (can be used for diagnostics)
3	0 V
4	+ V (solenoid supply/switching)

* Please refer to section 7.7.001 for information on the full plug range

All dimensions in mm (inch)