



**3/2 Poppet Valves
Electrically Actuated
M5**

- Extremely compact, high performance valves
- Single and multi-station bases
- Low power solenoids with built-in LED and surge suppression



Technical Data

Medium:

Compressed air, filtered to 5µm, lubricated and non-lubricated

Operation:

Poppet valve, servo assisted direct solenoid

Mounting:

Through-holes in sub-base

Port Sizes:

M5 thread

Operating Pressure:

1 to 7 bar

Flow Characteristics:

Size	'C'	'b'	'A'	l/min	Cv	Kv
M5	0,062	0,15	0,25	15	0,015	0,013

Ambient Temperature:

-20°C to +50°C

*Consult our Technical Service for use below +2°C

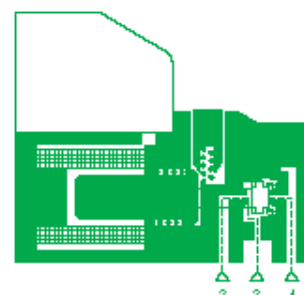
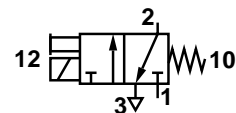
Materials:

Entirely non-corrodible. NBR poppet, aluminium single base and rail bases, stainless steel springs and yoke.

Ordering Information

To order, quote model number and voltage code from tables overleaf, e.g. V015416A-B263A for a Solenoid Actuated Spring Return model fitted with a 24V d.c. coil.

Order bases separately, e.g. M/P43154/4 for a 4 station rail base with M5 ports.





General Information

Symbol	Model	Operator	Return	Operation	Voltage	Operating Pressure (bar)	Weight (g)
	V015416A-B262A	Solenoid, servo assisted direct acting	Spring	Normally closed	12 V d.c.	1 - 7	12,6
	V015416A-B263A				24 V d.c.		

*Voltage Codes

Voltage	Codes
12V d.c. (optional)	2
24V d.c. (standard)	3

Electrical Details for Solenoid Operators

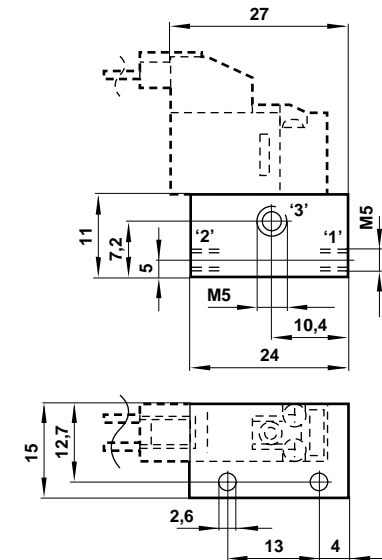
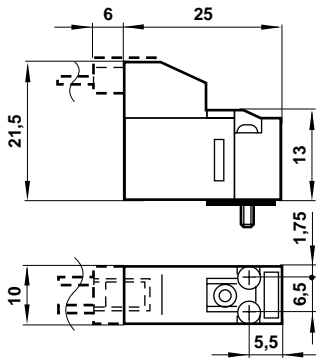
Voltage Tolerances:	±10% rated voltage
Power:	1 W (24 V = 41 mA, 12 V = 83 mA)
Power Indicator:	LED (red)
Surge Suppressor:	Fly-wheel diode
Manual Override:	Push button, spring return with locking facility
Insulation Class:	B
Connection:	Side plug connector with clip

Sub-bases

<p>Single Station Sub-base</p> <p>M/P43154/1</p>	<p>Multi-station Sub-base</p> <p>M/P43154/2 - 12</p>	<p>Blanking Plate</p> <p>M/P43164</p>
--	--	---------------------------------------

V015416A Models Single Solenoid Valves

M/P43154/1 Single Station Sub-base

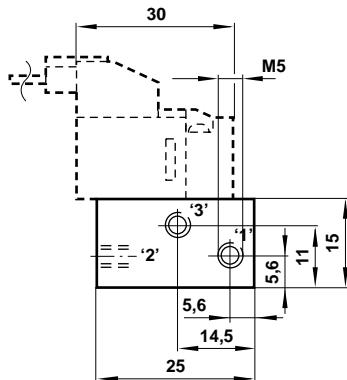


These valves are supplied complete with fixing screws and gasket.

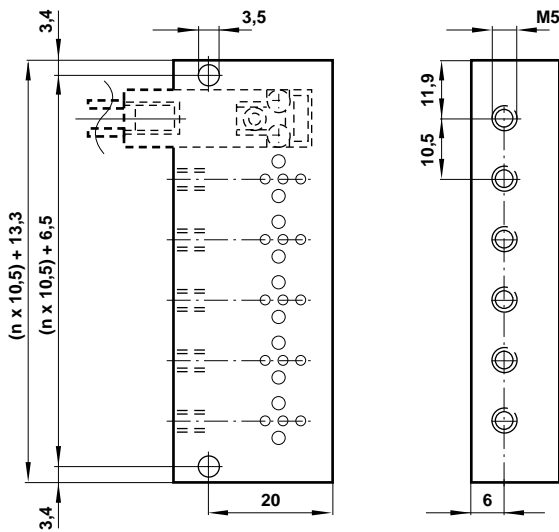
*Insert voltage code.



M/P43154/2 – 12
Multi-station Sub-bases

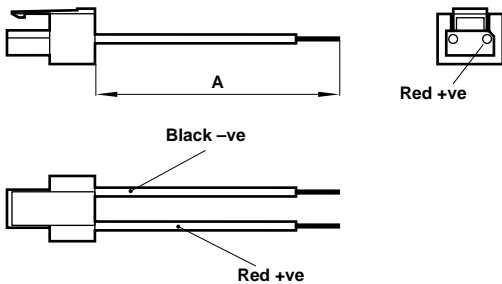


Type	No. of stations
M/P43154/2	2
M/P43154/4	4
M/P43154/6	6
M/P43154/8	8
M/P43154/10	10
M/P43154/12	12



n = Number of stations on manifold

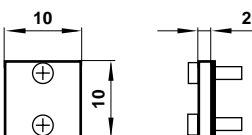
V025516A-Q20**
Plug Connector with clip



Model	Type	A
V015516A-Q2003	2-wire	300
V015516A-Q2010	2-wire	1000
V10175-K00	Connectors only (pack of 10)	-

**Complete Part No. from table above.

M/P43164
Blanking Plate



Blanking Plate for blocking off unwanted stations on Multi-station sub-bases.

Warning

These products are intended for use in industrial compressed air systems only. Do not use these products where pressures and temperatures can exceed those listed under 'Technical Data'. Before using these products with fluids other than those specified, for non-industrial applications, life-support systems, or other applications not within published specifications, consult NORGREN. Through misuse, age, or malfunction, components used in fluid power systems can fail in various modes. The system designer is warned to consider the failure modes of all component parts used in fluid power systems and to provide adequate safeguards to prevent personal injury or damage to equipment in the event of such failure. **System designers must provide a warning to end users in the system instructional manual if protection against a failure mode cannot be adequately provided.** System designers and end users are cautioned to review specific warnings found in instruction sheets packed and shipped with these products.